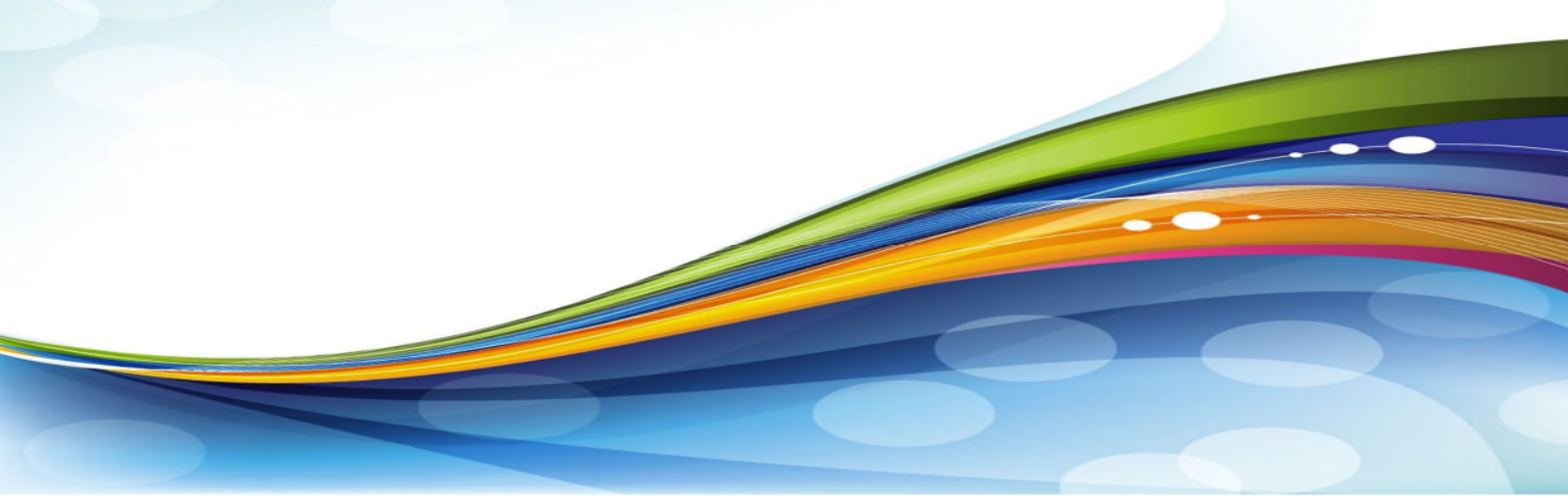




Barber County, Kansas

On Behalf of Kiowa District Healthcare,
Medicine Lodge Memorial Hospital and
Barber County Health Department

Community Health Needs Assessment



April 2017

**VVV Consultants LLC
Olathe, KS**

Community Health Needs Assessment

Table of Contents

I. Executive Summary

II. Methodology P8

- a) CHNA Scope and Purpose
- b) Local Collaborating CHNA Parties *(The identity of any and all organizations with which the organization collaborated and third parties that engaged to assist with the CHNA)*
- c) CHNA and Town Hall Research Process *(A description of the process and methods used to conduct the CHNA, a description of how the organization considered the input of persons representing the community, and an explanation of the process / criteria used in prioritizing such needs)*
- d) Community Profile *(A description of the community served by the facility and how the community was determined)*

III. Community Health Status P29

- a) Historical Health Statistics (Secondary Research)
- b) Community Feedback Research

IV. Inventory of Existing County Health Resources P45

- a) *A description of the existing healthcare facilities and other resources within the community available to meet the needs identified through the CHNA*

V. Detailed Exhibits P60

- a) Patient Origin and Access to Care
- b) Town Hall Attendees, Notes and Feedback *(Who attended with qualifications)*
- c) Public Notice and News
- d) Primary Research Detail

I. Executive Summary

[VVV Consultants LLC]

I. Executive Summary

Barber County, Kansas - 2017 Community Health Needs Assessment (CHNA)

Creating healthy communities requires a high level of mutual understanding and collaboration among community leaders. The development of this assessment brings together community health leaders and providers, along with local residents, to research and prioritize county health needs and document community health delivery successes. This health assessment will serve as the foundation for community health improvement efforts for the next three years. The Barber County CHNA was completed voluntarily by Kiowa District Healthcare, Medicine Lodge Memorial Hospital and the Barber County Health Department for the benefit of residents of Barber County, Kansas.

The 2017 assessment was coordinated and produced by VVV Consultants LLC (Olathe, Kansas) under the direction of Vince Vandehaar, MBA. The CHNA provides benefits to local health service organizations, the hospital, the public health department, as well as the community, in the following ways: 1) Increases knowledge of community health needs and resources; 2) Creates a common understanding of the priorities of the community's health needs; 3) Enhances relationships and mutual understanding between and among stakeholders; 4) Provides a basis upon which community stakeholders can make decisions about how they can contribute to improving the health of the community; 5) Provides rationale for current and potential funders to support efforts to improve the health of the community; 6) Creates opportunities for collaboration in delivery of services to the community; and 7) Provides guidance to the hospital and local health department for how they can align their services and community benefit programs to best meet needs.

CHNA Town Hall "Community Health Strengths" cited for Barber County, KS are as follows:

Barber County , Kansas - "Community Health Strengths"					
#	Loc	Topic	#	Loc	Topic
1	Both	Facilities (hospital & health department)	13	N	Long-tenured professional staff (hospital & health department)
2	Both	Community collaboration / engagement	14	N	Availability of elderly housing
3	Both	Faith-based groups (Ministerial Alliance)	15	Both	ED services / ambulance
4	N	Air & public water	16	Both	Availability of exercise facilities / fitness & wellness
5	Both	Schools / school wellness programs	17	Both	Local pharmacies
6	Both	Law enforcement / volunteer fire department	18	Both	Access to grocery stores / Meals-on-Wheels
7	N	Vaccination / immunization programs	19	N	Extension office
8	S	Capability to expand Telemedicine (good internet)	20	S	Community food pantries
9	S	Special education cooperative	21	S	Relationships with other providers
10	S	Volunteerism	22	S	Public health
11	S	Schools starting to provide summer lunches	23	S	Being small & rural (connections)
12	S	Nurses			

Town Hall “Community Health Changes and/or Improvements” cited for Barber County, KS are as follows:

Community Health Needs Assessment - 2017						
Barber County, Kansas - Town Hall Results (74 Attendees, 260 Votes)						
#	Health Needs to Change and/or Improve	Total Barber County	North Barber Only	South Barber Only	%	Accum
1	Assisted Living	29	21	8	11.2%	11.2%
2	One Local-based Primary Care Physician	27	8	19	10.4%	21.5%
3	Mental Health (South: Access, Diagnosis, Placement & Transportation, North: Detection & Placement)	26	10	16	10.0%	31.5%
4	Home Health Services	25	18	7	9.6%	41.2%
5	Specialists (South: OB, Peds, Derm, Ortho, Endo, Card, North: OB, Ortho, Urology)	24	9	15	9.2%	50.4%
6	Drug Abuse (Prescription, Meth & Marijuana)	21	16	5	8.1%	58.5%
7	Access to Dentists	20	20	0	7.7%	66.2%
8	Affordable Child Care	17	8	9	6.5%	72.7%
9	Communication of Available Healthcare Services	14	3	11	5.4%	78.1%
10	Obesity (Nutrition & Fitness)	11	3	8	4.2%	82.3%
Total Town Hall Votes		260			100.0%	
Other Items Noted: Funding for School Wellness Services, School Lunches, Early Detection (Mammographies), Suicide, Health Insurance, Heart Disease, Healthcare Transportation, Adult Daycare, Telehealth, Veterans Care and Prenatal Care.						

Key Community Health Needs Assessment Conclusions from secondary research for Barber County, KS are as follows:

KANSAS COUNTY HEALTH RANKINGS: Per the 2016 RWJ County Health Rankings study, Barber County, KS had the highest State of Kansas ranking (of 105 counties) in Physical Environment.

TAB 1. Demographic Profile
TAB 2. Economic/Business Profile
TAB 3. Educational Profile
TAB 4. Maternal and Infant Health Profile
TAB 5. Hospitalization / Providers Profile
TAB 6. Behavioral Health Profile
TAB 7. Risk Indicators & Factors
TAB 8. Uninsured Profile
TAB 9. Mortality Profile
TAB 10. Preventative Quality Measures

- TAB 1: Barber County has a population of 4,823 persons as of July 1, 2015, lower than the Kansas Rural Norm of 14,109. The percent change in population in Barber County from April 1, 2010 to July 1, 2015 is -0.8%, lower than the Kansas Rural Norm of -2.7%. The percent of white alone persons in Barber County is 95.9%, higher than the Kansas Rural Norm of 93.0%. The percent of Hispanic or Latino persons in Barber County is 3.8%, lower than the Kansas Rural Norm of 7.0%. The percent of foreign born persons in Barber County is 1.4%, lower than the Kansas Rural Norm of 3.3%. The percent of persons age 5 years+ in Barber County where a language other than English is spoken at home is 3.8%, lower than the Kansas Rural Norm of 6.2%. The percent of persons in poverty in Barber County is 11.1%, lower than the Kansas Rural Norm of 14.9%. The percent of children in poverty in Barber County is 17.0%, lower than the Kansas Rural Norm of 20.9%.
- TAB 2: The median household income in Barber County is \$51,811, higher than the Kansas Rural Norm of \$44,108. The per capita income in the past 12 months (in 2015 dollars) in Barber County is \$28,174, higher than the Kansas Rural Norm of \$23,309. The number of housing units in Barber County is 2,739, lower than the Kansas Rural Norm of 6,773. The total number of households in Barber County is 1,981, lower than the Kansas Rural Norm of 5,581. The percent of severe housing problems in Barber County is 7.0%, lower than the Kansas Rural Norm of 10.5%. The percent of persons age 1 year+ in Barber County living in the same house as one year ago is 84.9%, lower than the Kansas Rural Norm of 87.8%. The percent of persons age 1 year+ in Barber County who are living in the same house as one year ago is 89.8%, higher than the Kansas Rural Norm of 85.8%. The percent of persons in Barber County who are low income with low access to stores is 4.2%, lower than the Kansas Rural Norm of 9.2%. The percent of seniors in Barber County with low access to stores is 2.7%, lower than the Kansas Rural Norm of 4.8%. The food insecurity percent in Barber County is 16.0%, higher than the Kansas Rural Norm of 14.3%. The total of all firms in Barber County is 750, lower than the Kansas Rural Norm of 1,139.
- TAB 3: The percent of children eligible for free lunch in Barber County is 51.0%, higher than the Kansas Rural Norm of 42.8%. The percent of persons age 25 years+ in Barber County who are a high school graduate or higher is 91.6%, higher than the Kansas Rural Norm of 89.0%.
- TAB 4: The percent of births where prenatal care began in the first trimester in Barber County is 72.9%, lower than the Kansas Rural Norm of 74.7%. The percent of births where mothers smoked during pregnancy in Barber County is 21.4%, higher than the Kansas Rural Norm of 18.6%. The percentage of premature births in Barber County is 5.5%, lower than the Kansas Rural Norm of 9.1%. The percent of births with low birth weights in Barber County is 4.4%, lower than the Kansas Rural Norm of 7.3%. The percent of births with inadequate birth spacing in Barber County is 16.9%, higher than the Kansas Rural Norm of 12.2%. The percent of births occurring to unmarried women in Barber County is 28.0%, lower than the Kansas Rural Norm of 39.9%. The infant mortality rate in Barber County is 0.0, lower than the Kansas Rural Norm of 4.4. The percent of infants fully immunized at 24 months in Barber County is 93.9%, higher than the Kansas Rural Norm of 72.9%. The average monthly WIC participation per 1,000 population in Barber County is 21.4, lower than the Kansas Rural Norm of 25.6.

- TAB 5: The ratio of primary care physicians to population in Barber County is 1,650:1, lower than the Kansas Rural Norm of 2,451:1. The number of preventable hospital stays per 1,000 in Barber County is 123.0, higher than the Kansas Rural Norm of 69.7. The percent of patients in Barber County who reported yes, they would definitely recommend the hospital is 82.0%, higher than the Kansas Rural Norm of 77.9%.
- TAB 6: The percent of children in single-parent households in Barber County is 30.0%, higher than the Kansas Rural Norm of 28.3%. The percent of depression in the Medicare population in Barber County is 14.2%, lower than the Kansas Rural Norm of 16.2%. The ratio of mental health providers to population in Barber County is 4,900:1, higher than the Kansas Rural Norm of 1,893:1. The violent crime rate per 100,000 in Barber County is 221.0, lower than the Kansas Rural Norm of 276.2. The percent of alcohol-impaired driving deaths in Barber County is 57.0%, higher than the Kansas Rural Norm of 39.7%.
- TAB 7: The percent of adult obesity in Barber County is 37.0%, higher than the Kansas Rural Norm of 34.1%. The rate of sexually transmitted infections per 100,000 in Barber County is 246.9, lower than the Kansas Rural Norm of 263.7. The mean travel time to work for workers age 16 years+ in Barber County is 13.5 minutes, lower than the Kansas Rural Norm of 16.5 minutes. The percent of persons in Barber County driving alone to work is 83.0%, higher than the Kansas Rural Norm of 79.7%. The percent of persons in Barber County with a long commute driving alone is 15.0%, lower than the Kansas Rural Norm of 19.9%. The percent of persons in Barber County getting insufficient sleep is 33.0%, higher than the Kansas Rural Norm of 30.7%. There are no drinking water violations in Barber County, compared to the Kansas Rural Norm of yes. The percent of Diabetes in the Medicare population in Barber County is 22.0%, lower than the Kansas Rural Norm of 26.2%. The percent of Heart Failure in the Medicare population in Barber County is 19.1%, higher than the Kansas Rural Norm of 15.6%. The percent of Hyperlipidemia in the Medicare Population in Barber County is 31.2%, lower than the Kansas Rural Norm of 36.4%. The percent of Hypertension in the Medicare population in Barber County is 44.3%, lower than the Kansas Rural Norm of 52.7%. The percent of Stroke in the Medicare population in Barber County is 1.7%, lower than the Kansas Rural Norm of 3.0%.
- TAB 8: The percent of uninsured children in Barber County is 6.0%, lower than the Kansas Rural Norm of 8.0%.
- TAB 9: The age-adjusted mortality rate per 100,000 population in Barber County is 913.4, higher than the Kansas Rural Norm of 869.6. The age-adjusted Alzheimer's Disease mortality rate per 100,000 population in Barber County is 37.3, higher than the Kansas Rural Norm of 29.2. The age-adjusted Cancer mortality rate per 100,000 population in Barber County is 144.5, lower than the Kansas Rural Norm of 180.7. The age-adjusted Diabetes mortality rate per 100,000 population in Barber County is 25.9, lower than the Kansas Rural Norm of 32.8. The age-adjusted Heart Disease mortality rate per 100,000 population in Barber County is 274.2, higher than the Kansas Rural Norm of 189.1. The age-adjusted Suicide mortality rate per 100,000 population in Barber County is 76.8, higher than the Kansas Rural Norm of 18.4. The age-adjusted Traffic Injury mortality rate per 100,000 population in Barber County is 48.9, higher than the Kansas Rural Norm of 29.8. The age-adjusted Unintentional Injuries mortality rate per 100,000 population in Barber County is 75.5, lower than the Kansas Rural Norm of 63.9.

- TAB 10: The percent of access to exercise opportunities in Barber County is 52.0%, higher than the Kansas Rural Norm of 47.9%. The percent of limited access to healthy foods in Barber County is 7.0%, lower than the Kansas Rural Norm of 9.3%. The percent of diabetic monitoring in Barber County is 86.0%, higher than the Kansas Rural Norm of 84.5%. The percent of mammography screenings in Barber County is 53.0%, lower than the Kansas Rural Norm of 57.8%.

Key 2017 Community Feedback Conclusions

In February 2017, Kiowa District Healthcare, Medicine Lodge Memorial Hospital and Barber County Health Department collected stakeholder feedback from their primary service area consumers, community leaders and groups, public and other organizations, and other providers. These stakeholders (N=331) provided the following community feedback insights via an online perception survey:

- 71.0% of Barber County stakeholders would rate the overall quality of healthcare delivery in their community as either Very Good or Good, with Very Good being the highest ranking (71.8% in North Barber and 75.0% in South Barber).
- Barber County stakeholders are following these personal health practices: 54.9% are eating right – 5 servings of fruits and vegetables (56.8% in North Barber and 51.6% in South Barber), 10.2% are using tobacco products weekly (11.4% in North Barber and 8.3% in South Barber), 60.1% are exercising 2-3 times weekly (64.1% in North Barber and 54.7% in South Barber), 4.13% are consuming alcohol more than once daily (5.3% in North Barber and 2.1% in South Barber) and 1.3% are living in a home with unsafe water, air, sewer and other problems (0.8% in North Barber and 1.0% in South Barber).
- Barber County stakeholders are satisfied with the following services: Ambulance Services, Emergency Room, Environmental (South Barber Only), Eye Doctor / Optometrist (North Barber Only), Immunizations, Inpatient Services, Outpatient Services (South Barber Only), Pharmacy (South Barber Only), Public Health Department (North Barber Only) and WIC (South Barber Only).
- Barber County stakeholders are not satisfied with the following services: Assisted Living, Child Care, Chiropractors, Early Detection, Environmental (North Barber Only), Eye Doctor / Optometrist (South Barber Only), Family Planning Services, Home Health, Hospice, Mental Health Services, Nursing Home, Parenting, Primary Care (North Barber Only), School Nurse and Specialists.
- 91.2% of Barber County stakeholders have received healthcare services outside of their community over the past two years (91.7% in North Barber and 91.7% in South Barber).
- Barber County stakeholders perceive the following causes of disease or disability a problem in their community: Alcohol, Assisted Living, Drugs / Substance Abuse, Mental Illness, Physical Exercise (South Barber Only), Poverty, Suicide and Wellness Education (South Barber Only).

II. Methodology

[VVV Consultants LLC]

II. Methodology

a) Scope and Purpose

The new federal Patient Protection and Affordable Care Act requires that each registered 501(c)3 hospital conduct a Community Health Needs Assessment (CHNA) at least once every three years and adopt a strategy to meet community health needs. Any hospital who has filed a 990 is required to conduct a CHNA. IRS Notice 2011-52 was released in late fall of 2011 to give notice and request comments.

JOB #1: Meet/Report IRS 990 Required Documentation

1. A description of the community served by the facility and how the community was determined;
2. A description of the process and methods used to conduct the CHNA;
3. The identity of any and all organizations with which the organization collaborated and third parties that it engaged to assist with the CHNA;
4. A description of how the organization considered the input of persons representing the community (*e.g., through meetings, focus groups, interviews, etc.*), who those persons are, and their qualifications;
5. A prioritized description of all of the community needs identified by the CHNA and an explanation of the process and criteria used in prioritizing such needs; and
6. A description of the existing health care facilities and other resources within the community available to meet the needs identified through the CHNA.

Section 501(r) provides that a CHNA must take into account input from persons who represent the broad interests of the community served by the hospital facility, including individuals with special knowledge of or expertise in public health. Under the Notice, the persons consulted must also include: Government agencies with current information relevant to the health needs of the community and representatives or members in the community that are medically underserved, low-income, minority populations, and populations with chronic disease needs. In addition, a hospital organization may seek input from other individuals and organizations located in or serving the hospital facility's defined community (e.g., health care consumer advocates, academic experts, private businesses, health insurance and managed care organizations, etc.).

For health departments that are preparing to apply for accreditation, the Public Health Accreditation Board (PHAB) recommends working diligently on a Community Health Assessment and Community Health Improvement Plan. The Community Health Needs Assessment is not only a requirement for accreditation, but it is a vital part of the Public Health role.

JOB #1: Report PHAB / ACA Required CHNA Documentation

1. Appoint an Accreditation Coordinator
2. Review PHAB's Online Orientation to Public Health Department Accreditation
3. Review the documentation requirements for the measures
4. Begin/refine work on the prerequisites
 - a. Community health assessment
 - b. Community health improvement plan
 - c. Health department strategic plan
5. Prepare documentation

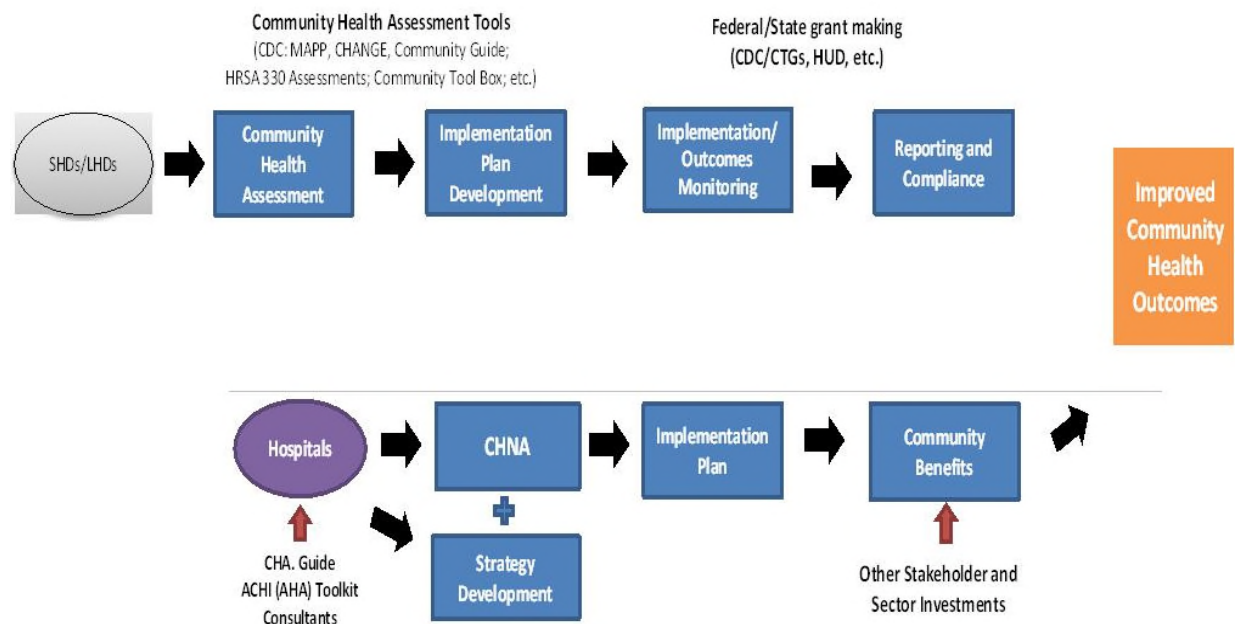
JOB #2: Making a CHNA Widely Available to the Public

The Notice provides that a CHNA will be considered to be “conducted” in the taxable year that the written report of the CHNA findings is made widely available to the public. The Notice also indicates that the IRS intends to pattern its rules for **making a CHNA “widely available to the public”** after the rules currently in effect for Form 990. Accordingly, an organization would make a **facility’s written report** widely available by posting the final report on its website either in the form of (1) the report itself, in a readily accessible format or (2) a link to another organization’s website, along with instructions for accessing the report on that website. *The Notice clarifies that an organization must post the CHNA for each facility until the date on which its subsequent CHNA for that facility is posted.*

JOB #3: Adopt an Implementation Strategy by Hospital

Section 501(r) requires a hospital organization to adopt an implementation strategy to meet the needs identified through each CHNA. The Notice defines an “implementation strategy” as a written plan that addresses each of the needs identified in a CHNA by either (1) describing how the facility plans to meet the health need or (2) identifying the health need as one that the facility does not intend to meet and explaining why the facility does not intend to meet it. A hospital organization may develop an implementation strategy in collaboration with other organizations, which must be identified in the implementation strategy. As with the CHNA, a hospital organization that operates multiple hospital facilities must have a separate written implementation strategy for each of its facilities.

Great emphasis has been given to work hand-in-hand with leaders from hospitals, the state health department and the local health department. A common approach has been adopted to create the CHNA, leading to aligned implementation plans and community reporting.



II. Methodology

b) Collaborating CHNA Parties

Working together to improve community health takes collaboration. Listed below is an in-depth profile of the local hospital and health department CHNA partners (*Note: Complete list of Barber County 2017 CHNA partners also includes Barber County Commission, First State Bank, Kiowa City Council, Friends of Kiowa District Hospital and Manor Foundation, Medicine Lodge Community Health Foundation and USD 225*):

Kiowa District Healthcare Profile

1002 S. 4th St., Kiowa, KS 67070

Chief Executive Officer: Margaret Grismer

Hospital: At Kiowa District Hospital, we are continuously striving to give quality care close to home. Kiowa District Hospital is a ten-bed facility that offers intermediate, acute, swing bed, and observation Services.

Our swing bed and intermediate services include 24-hour nursing care to help you transition to home following a surgery or acute illness. The nursing department works closely with your practitioner and the physical therapy department to personalize your plan of care.

Our 24-hour Emergency Department, located on the east side of the building, consists of two ER bays with a third negative pressure isolation exam room. The emergency department is staffed with ACLS, PALS, TNCC, and ATLS certified personnel. Upon entering the facility, please use the telephone in the foyer of the ER to alert the nursing staff of your arrival.

Clinic: We would like to welcome all residents in Kiowa and the surrounding areas to come to the Kiowa District Clinic, where they will find knowledgeable and compassionate medical providers and staff. Caring for over 500 patients a month, we are a family practice providing quality care in a variety of ways.

Manor: Kiowa District Manor is a 29-bed home with 20 private rooms providing full care services such as routine in house doctor visits, restaurant style dining, in house beauty shop, transportation, restorative therapy service, and a wide variety of indoor and outdoor activities.

We pride ourselves on individualized resident care, and empower our residents to remain active and involved in facility decisions. Our staff is trained in providing individualized care to each resident. Other services we provide include; short term care, daycare, and respite care.

Our current projects include participating in a nationally recognized evidence-based fall prevention program, participation in Peak 2.0, and we have implemented strategies to reduce disturbances in night time sleep therefore increasing resident activity during the day. We also consistently provide staffing ratios above the national average. We are an alarm free and physical restraint free facility.

Friends of Kiowa District Hospital and Manor Foundation, Inc.: Friends of Kiowa District Hospital and Manor Foundation, Inc. was approved in 2011 as an IRS 501(C)(3) tax-exempt charitable organization formed to support Kiowa District Healthcare in the provision of health services in the community. The purpose of the Foundation is to improve access to and improve the quality of healthcare services for all people in Kiowa, Kansas and surrounding areas. Geographical location on the Kansas \ Oklahoma border automatically includes people living in Northern Alfalfa and Woods Counties, Oklahoma in those who support and benefit from work of the Foundation.

The primary function of the Foundation is to work with Kiowa District Healthcare board, staff and patrons to identify facility, equipment, staff and program needs required to provide quality care close to home and raise funds to help fulfill the requests.

Services:

- | | |
|---------------------------------|-----------------------|
| • Emergency Room | • Physical Therapy |
| • Lab | • Providers |
| • Manor | • Radiology |
| • Nursing | • Rural Health Clinic |
| • Occupational / Speech Therapy | • Surgery |

Medicine Lodge Memorial Hospital Profile

710 N. Walnut St., Medicine Lodge, KS 67104

Administrator: Kevin White

Exceptional Skill, Extraordinary Care: If you have never been hospitalized, you might not know that all hospitals are not the same. There are big differences in the quality of the facilities, the quality of care and the quality of caring. At Medicine Lodge Memorial Hospital (MLMH), we have focused our recent upgrades on improving all three.

Here you'll discover exceptional skill and extraordinary care in surgery, cardiology, radiology, podiatry, nursing, physical therapy and much more. You'll also discover the latest technology, MRI, CT scan, ultrasound and endoscopy, dietary counseling, complete lab services and 24-hour emergency medical care.

Our Mission: To provide excellent healthcare services and promote optimal health for our community members.

Our Vision: Exceptional Skill, Extraordinary Care

Our Values: Compassion, commitment, honesty, loyalty, respect, accountability, trust, integrity, courtesy and teamwork.

Medicine Lodge Memorial Hospital is committed to building an environment where caring principles are commonplace and a given right, where relationships between patients, families and caregivers are at the heart of care delivery. Simply put, we are totally dedicated to improving the health and quality of life for the people and community we serve.

Medicine Lodge Community Health Foundation: The Medicine Lodge Community Health Foundation is a 501(c)(3) not-for-profit organization that is dedicated to maintaining and improving the health of the citizens of Medicine Lodge and the surrounding area and to establish a means that will guarantee high-quality healthcare now and in the future.

A board of directors manages the foundation. Members of the board are selected from the service area of the Medicine Lodge Memorial Hospital & Physicians Clinic. Current members of the foundation board are: Betty Buell, Dale Lonker, Sara Whelan, George Palmer, Marge Rankin, Pam Packard and Lisa Withrow

Donations made to the foundation support projects to improve the quality of health for the residents of the Medicine Lodge area. Gifts may be tax-deductible, depending upon your individual tax situation.

Comprehensive Hospital Care & Services: A variety of hospital services are available at Medicine Lodge Memorial Hospital & Physicians Clinic:

- Lab & Diagnostics
- Radiology, MRI, CT, Echo, EKG
- Lifeline
- General Surgery
- 24-Hour Emergency Room
- Acute Skilled & Intermediate Care
- Dietary Services
- Pulmonary Function Test
- Physical Therapy (Inpatient & Outpatient)
- Hospital Outpatient Services

Clinic Services: Primary care offices are often the first stop for medical treatment. The advantage to seeing your primary care whenever possible is your complete medical history will be in front of the doctor to assist with diagnosis. Over time, your doctor will get to know you and be able recognize signs that indicate a potential change in your health.

We take our time with each patient that presents to clinic for evaluation. We pride ourselves in taking care of you and your families. While we do encourage people to call in and schedule appointments, we are often able to see you on the same day you call in.

- Cardiology
- Podiatry
- Aesthetic Procedures (Skin)
- Comprehensive Physicals & Testing
- Telemedicine
- Well-Baby Checkups
- Outpatient Surgery / Endoscopy

Barber County Health Department Profile

211 E. Kansas Ave., Medicine Lodge, KS 67104

Administrator / Health Officer: Jerry McNamar

Our mission is to promote health and prevent disease and injury by assessing county health status and developing health policies and programs which improve population health.

We strive to assure that necessary, high quality Public and Environmental Health services are available to everyone in our county.

Services Offered:

- Immunizations Child, Hep A-B, DTAP, TPV, HIB, Rota, Prevnar, MMR, Varicella, Influenza
- Immunizations Adult, Hep A-B, Zostavax, Prevnar, Tetanus, Pneumonia, Influenza
- Medicare, Medicaid, VFC and private insurance billed
- Foot care and fingernail care for senior citizens and special needs
- Preschool and daycare physical assessments
- Kan-Be-Healthy physical assessments
- Blood Pressure Checks
- TB Skin Tests
- Head Lice Checks
- Car Seat Information
- Pregnancy Tests
- STD Tests
- Parenting Classes, Love & Logic
- Baby Sitting Classes
- Communicable Disease Epidemiology
- Breast feeding instruction
- Epidemic/Health Disaster Response
- Dental Varnishes
- Early Detection (EDW) free or low cost breast and cervical cancer screenings
- Water quality testing, residential and livestock usage
- Permits for new water wells and new or repaired septic systems
- Real Estate transfer inspections for mortgage lenders and appraisals
- Family planning services
- Blood draws for PSA, STD or Lead
- Lead testing with follow up home inspection
- Health Fair lab work
- WIC - Women, Infants, Children nutrition program
- Access point for SNAP, KANCARE and Senior Citizens Food Program
- School Health Programs
- Nuisance Investigations
- Hearing and Vision Screenings

Barber County Health Department offers regularly scheduled services in both Medicine Lodge and Kiowa on the following days:

- Kiowa Immunizations, Foot Care and WIC, Monday, 10-3pm at 115 S. Fifth
- Medicine Lodge Immunizations, Tuesday through Friday, 8:30-5pm by appointment
- Medicine Lodge Foot Care, Tuesday, 1-5pm
- WIC Clinic, Tuesday, 8:30-12pm in Medicine Lodge
- Family Planning, Women's Health, monthly on a Friday in Medicine Lodge
- Blood Draws for Tests, Monday-Wednesday, 8:30-12pm
- All other services by appointment

II. Methodology

b) Collaborating CHNA Parties Continued

Consultant Qualifications



VHV Consultants LLC

Company Profile: 601 N. Mahaffie, Olathe, KS 66061 (913) 302-7264

VINCE VANDEHAAR, MBA

Principal Consultant and Owner of VHV Consultants LLC

VHV Consultants LLC was incorporated on May 28, 2009. With over 30 years of business and faculty experience in helping providers, payors and financial service firms obtain their strategic planning and research and development needs, Vince brings in-depth health industry knowledge, research aptitude, planning expertise and energy. VHV Consultants LLC services are organized, formal processes of listening to the voice of the customer. Vince started his consulting business after working for Saint Luke's Health System (SLHS) of Kansas City for 16 years. *(Note: Saint Luke's Hospital of Kansas City, SLHS's largest hospital, won the Malcolm Baldrige National Quality Award in March of 2003. The Baldrige examiners cited Vince's department as "Best Practice" in the areas of customer satisfaction, market research and evaluation efforts <Kansas City Star 3/10/04>).*

VHV Consultants LLC consultants have in-depth experience helping hospitals work with local health departments to engage community residents and leaders to identify gaps between existing health community resources and needs and construct detailed strategies to meet those needs, while still adhering to the hospital's mission and budget. Over the past 20 years, Vandehaar has completed eight comprehensive Baldrige aligned Community Health Needs Assessments for Saint Luke's of Kansas City System facilities (three campuses) and was contracted to conduct two additional independent department of health consulting projects (prior to IRS 990 regs). To date, VHV has completed 75 CHNA IRS-aligned assessments for Iowa, Kansas, Missouri and Nebraska hospitals and health departments.

Vince Vandehaar, MBA is actively involved in the Kansas City community. He is a member the Greater Kansas City Employee Benefits Association, the Society for Healthcare Strategy and Market Development, the American Marketing Association Kansas City Chapter and Co-Chair of the AMA Kansas City Healthcare Special Interest Group. In addition to these roles, from 2000 to 2008, Vince served as the state chairman for MHA's Data Committee and was a member of KHA's Data Taskforce.

Collaborating Consultants

Alexa Backman, MBA - VHV Consultants LLC

Associate Consultant

Alexa provides project management support for all aspects of VHV Consultants LLC's healthcare consulting services, from project start to finish. She is client focused with a special interest in quality patient healthcare delivery to meet customer needs. Alexa graduated from the University of Kansas with a Bachelor's Degree in Community Health Education in 2013. In 2015, Alexa graduated from Rockhurst University's Helzberg School of Management with an MBA in Healthcare Management.

II. Methodology

c) CHNA and Town Hall Research Process

Barber County, Kansas's Community Health Needs Assessment (CHNA) process began in September 2016. At that time, an inquiry was made by Judy Schrock, Chairman Friends of Kiowa District Hospital and Manor Foundation, Inc. to VVV Consultants LLC to explore the possibility of conducting a comprehensive IRS and PHAB-aligned CHNA. VVV Consultants LLC then reviewed their CHNA experience, in-depth CHNA requirements and regulations, CHNA development options to meet IRS and PHAB requirements and next steps after option approval.

VVV CHNA Deliverables:

- Confirm Barber County, Kansas's Primary Service Area meets the 80-20 Patient Origin Rule.
- Uncover / document basic secondary research and health of the county organized by 10 tabs.
- Conduct two Town Hall meetings to discuss secondary data and uncover / prioritize county health needs.
- Conduct and report CHNA primary research (with valid N).
- Prepare and publish CHNA report that meets IRS and PHAB requirements.

To ensure proper Barber County, Kansas Town Halls representation that meets the 80-20 Patient Origin Rule, a patient origin three-year summary was generated and documented the zip codes below as Barber County, Kansas's Primary Service Area.

Barber County, KS - PSA Detail Demographic Profile									
			Population			Households		HH	Per Capita
Zip	Name	County	YR 2014	YR 2019	Chg.	YR 2014	YR 2019	Avg. Size	Income 14
67057	Hardtner	BARBER	223	222	-0.4%	106	105	2.1	\$28,121
67061	Hazelton	BARBER	180	185	2.8%	83	87	2.1	\$27,341
67065	Isabel	BARBER	213	213	0.0%	90	91	2.4	\$26,279
67070	Kiowa	BARBER	1,143	1,155	1.0%	519	528	2.2	\$27,062
67071	Lake City	BARBER	69	69	0.0%	29	29	2.4	\$24,755
67104	Medicine Lodge	BARBER	2,576	2,639	2.4%	1,131	1,165	2.3	\$22,906
67138	Sharon	BARBER	386	393	1.8%	166	170	2.3	\$22,346
67143	Sun City	BARBER	83	83	0.0%	41	41	2.0	\$29,085
Totals			4,873	4,959	7.6%	2,165	2,216	2.2	\$25,987

Kiowa District Healthcare, Medicine Lodge Memorial Hospital and Barber County Health Department

CHNA Work Plan - Project Timeline and Roles 2017

Step	Date	Lead	Task
1	10/19/2016	VVV	Sent Hospital and Health Department clients VVV quote for review.
2	11/21/2016	Hosps / DOH	Select CHNA Option A / B / C. Approve and sign VVV CHNA quote.
3	11/21/2016	All	Send out REQCommInvite Excel file. Request Hospital and Health Department clients to enter PSA stakeholder names, addresses and e-mail addresses.
4	1/3/2017	All	Request Hospital clients to send KHA PO101, PO103 and TOT223E Patient Origin reports to document PSA for FFY 14, 15 and 16. In addition, request Hospital clients complete three-year historical PSA IP / OP / ED / Clinic Patient Origin file (Use ZipPSA_3yrPOrigin.xls).
5	On or before 1/16/2017	All	Prepare CHNA stakeholder feedback online survey. Send test link for Hospital and Health Department clients' review.
6	On or before 1/16/2017	All	Prepare and send out PR #1 story to local media announcing online CHNA survey. Request public to participate in PR story. Place CHNA link on website, Facebook, etc. Request Hospital clients place PR with all PSA media outlets.
7	1/23/2016	Hosps / DOH	Launch online CHNA feedback survey to stakeholders. Hospital and Health Department clients will e-mail invite to participate to all stakeholders.
8	On or before 2/13/2017	VVV	Assemble and complete secondary research, organized by 10 Tabs. Create Town Hall PowerPoint for presentation.
9	2/20/2017	All	Prepare and send out PR #2 story to local media announcing upcoming Town Hall.
10	2/20/2017	All	Prepare and send out Town Hall e-mail reminder message to stakeholders and community. Place optional local advertisement.
11	On or before 3/10/2017	All	Conduct conference call with Hospital and Health Department clients to review Town Hall data and flow.
12	3/15/2017	VVV	Conduct CHNA Town Hall (<i>Time and Location TBD</i>) . Review and discuss basic health data, plus rank health needs.
13	On or before 3/31/2017	VVV	Complete analysis. Release draft one and seek feedback from Hospital and Health Department clients.
14	On or before 4/15/2017	VVV	Produce and release final CHNA report. Hospital and Health Department clients will post CHNA online.
15	On or before 4/30/2017	Hosps / DOH	Conduct Implementation Plan meeting with PSA leaders.
16	30 days prior to end of hospital fiscal year	Hosps / DOH	Hold Board meetings to discuss CHNA needs and create / adopt an Implementation Plan. Communicate CHNA plan to community.

To meet the IRS and PHAB CHNA requirements, a four-phase methodology was reviewed and approved as follows:

Phase I—Discovery:

Conduct a 30-minute conference call with the CHNA hospital and health department clients. Review / confirm CHNA calendar of events, explain / coach clients to complete required participant database and schedule / organize all Phase II activities.

Phase II—Qualify Community Need:

A) Conduct secondary research to uncover the following historical community health status for the primary service area. Use Kansas Hospital Association (KHA), Vital Statistics, Robert Wood Johnson County Health Rankings, etc. to document current state of county health organized as follows:

TAB 1. Demographic Profile
TAB 2. Economic/Business Profile
TAB 3. Educational Profile
TAB 4. Maternal and Infant Health Profile
TAB 5. Hospitalization / Providers Profile
TAB 6. Behavioral Health Profile
TAB 7. Risk Indicators & Factors
TAB 8. Uninsured Profile
TAB 9. Mortality Profile
TAB 10. Preventative Quality Measures

B) Gather historical primary research to uncover public health needs, practices and perceptions for hospital and health department clients' primary service areas.

Phase III—Quantify Community Need:

Conduct two 90-minute Town Hall meetings with required county primary service area residents. At each Town Hall meeting, CHNA secondary data will be reviewed, facilitated group discussion will occur and a group ranking activity to determine the most important community health needs will be administered.

Phase IV—Complete Data Analysis and Create Comprehensive Community Health Needs Assessment:

Post CHNA report findings to meet IRS and PHAB CHNA criteria.

After consideration from the sponsoring hospital and health department clients, the CHNA Option C was selected with the following project schedule:

Phase I: Discovery.....	January 2017
Phase II: Secondary / Primary Research.....	February 2017
Phase III: Town Hall Meetings.....	March 15, 2017
Phase IV: Prepare / Release CHNA report.....	April 30, 2017

Detail CHNA Development Steps Include:

Steps to Conduct Community Health Needs Assessment	
	Development Steps
Step #1 Commitment	<i>Determine interest level of area healthcare leaders (Health Department, Hospital, Mental Health Centers, Schools, Churches and Physicians, etc.) and hold community meeting.</i>
Step #2 Planning	<i>Prepare brief Community Health Needs Assessment plan. List goals, objectives, purpose, outcome, roles, community involvement, etc. Hold community kick-off meeting.</i>
Step #3 Secondary Research	<i>Collect and report community health published facts. Gather health practice data from published secondary research sources (i.e. census, county health records, behavioral risk factors surveillance, etc.).</i>
Step #4a Primary Research	<i>Conduct Community Roundtable (qualitative research). Review secondary research (Step #3) with community stakeholders. Gather current opinions and identify health needs.</i>
Step #4b Primary Research <Optional>	<i>Collect community opinions (quantitative research). Gather current opinions (valid sample size) regarding community health needs and healthcare practices. If appropriate, conduct Physician Manpower Assessment to determine FTE physician need by specialty.</i>
Steps #5 Reporting	<i>Prepare / present comprehensive Community Health Needs Assessment report to community leaders with recommended actions to improve health. (Note: Formal report will follow PHAB regulations).</i>
<div>VVV Consultants LLC</div> <div>(913) 302-7264</div>	

Overview of Town Hall Community Priority Setting Process

Each community has a wealth of expertise to be tapped for CHNA development. For this reason, a Town Hall is the perfect forum to gather community insight and provide an atmosphere to objectively consensus build and prioritize county health issues.

All Town Hall priority-setting and scoring processes involve the input of key stakeholders in attendance. Individuals and organizations attending the Town Halls were critically important to the success of the CHNA. The following list outlines partners invited to the Town Hall: local hospital, public health community, mental health community, free clinics, community-based clinics, service providers, local residents, community leaders, opinion leaders, school leaders, business leaders, local government, faith-based organizations and persons (or organizations serving them), people with chronic conditions, uninsured community members, low income residents and minority groups.

Barber County, Kansas's Town Halls were held on Wednesday, March 15, 2017 at the Barber County Annex and the Kiowa Community Building. Vince Vandehaar and Alexa Backman facilitated these two 1½ hour session with 74 attendees total. (Note: a detailed roster of all Town Hall attendees is listed in Section V.)

The following Town Hall agenda was conducted:

1. Welcome and introductions.
2. Review purpose for the CHNA Town Hall and roles in the process.
3. Presentation / review of historical county health indicators (10 Tabs).
4. Facilitate Town Hall participant discussion of data by probing health strengths / concerns. Reflect on size and seriousness of any health concerns cited and discuss current community health strengths.
5. Engage Town Hall participants to rank health needs using four dots to cast votes on priority issues. Tally and rank top community health concerns cited.
6. Close meeting by reflecting on the health needs / community voting results. Inform participants on next steps.

At the end of the Town Hall session, VVV encouraged all community members to continue to contribute ideas to hospital leaders via e-mail or personal conversations.

(NOTE: To review detail Town Hall discussion content, please turn to Section V for detailed notes of session and activity card content reporting of open-end comments.)

**Community Health Needs Assessment
Barber County KS - Town Hall Meeting**
*on behalf of Kiowa District Healthcare, Medicine Lodge Memorial
Hospital and Barber County Health Department*



Vince Vandehaar, MBA
VVV Consultants LLC
Principal / Adjunct Professor

Olathe, Kansas 66061
VVV@VandehaarMarketing.com
913-302-7264

**Community Health Needs Assessment (CHNA)
Town Hall Discussion Agenda (2 Sessions)**

- I. Opening / Introductions (10 mins)
- II. Review CHNA Purpose and Process (10 mins)
- III. Review Current County "Health Status"
-Secondary Data by 10 TAB Categories
-Review Community Feedback Research (35 mins)
- IV. Collect Community Health Perspectives
-Hold Community Voting Activity: Determine
Most Important Health Areas (30 mins)
- I. Close / Next Steps (5 mins)

I. Introductions – VVV Consultants LLC



Vince Vandehaar, MBA – Principal / Adjunct Professor

- Rockhurst & Webster Universities
- 35+ year veteran marketer, strategist and Adjunct Professor
- Saint Luke's Health System, BCBS of KC and Tillinghast Towers Perrin
- *NOTE: Vince started VVV Consultants LLC on 1/1/2009, after working for Saint Luke's Health System of Kansas City for 16 years. Saint Luke's Hospital of KC, SLHS's largest hospital, won the Malcolm Baldrige National Quality Award in March of 2003.

Alexa Backman, MBA – Associate Consultant

- VVV Consultants LLC, Cerner Corporation
- B.S - Community Health, KU; MBA - Health Care Management, Rockhurst University

Business Development Challenges
Direction / Homework / Deployment

Strategy

Strategic Plan
Marketing Plan

Research

Market Demand
Assessment
News Review: ACO
Hospitals / Payers, etc.

Community Health Needs Assessment

Physician Manpower Assessment
Patient / Provider Focus Groups
Competition Research
Marketing Performance Audit
New Product Development
Customer Satisfaction Research
Market Brand Tracking

Development

Scorecard Development
Social Media Deployment
Referral Tracking
Relational Marketing
HCAHPS Quality Coaching

VVV Consultants LLC – Olathe KS



Town Hall Participation (You)

- ALL attendees welcome to share
 - Parking Lot
- There are no right or wrong answers
- Only one person speaks at a time
- Please give truthful responses
- Have a little fun along the way

I. Introductions: A Conversation with the Community

Community members and organizations invited to CHNA Town Hall

Consumers: Uninsured/underinsured people, Members of at-risk populations, Parents, caregivers and other consumers of health care in the community, and Consumer advocates.

Community leaders and groups: The hospital organization's board members, Local clergy and congregational leaders, Presidents or chairs of civic or service clubs -- Chamber of Commerce, veterans' organizations, Lions, Rotary, etc., Representatives from businesses -- owners/CEO's of large businesses (local or large corporations with local branches), Business people & merchants (e.g., who sell tobacco, alcohol, or other drugs), Representatives from organized labor, Political, appointed and elected officials, Foundations, United Way organizations. And other "community leaders."

Public and other organizations: Public health officials, Directors or staff of health and human service organizations, City/Community planners and development officials, Individuals with business and economic development experience, Welfare and social service agency staff, Housing advocates - administrators of housing programs: homeless shelters, low-income-family housing and senior housing, Education officials and staff - school superintendents, principals and teachers, Public safety officials, Staff from state and area agencies on aging, Law enforcement agencies - Chiefs of police, Local colleges and universities, Coalitions working on health or other issues.

Other providers: Physicians, Leaders in other not-for-profit health care organizations, such as hospitals, clinics, nursing homes and home-based and community-based services, Leaders from Catholic Charities and other faith-based service providers, Mental health providers, Oral health providers, Health insurers, Parish and congregational nursing programs, Other health professionals

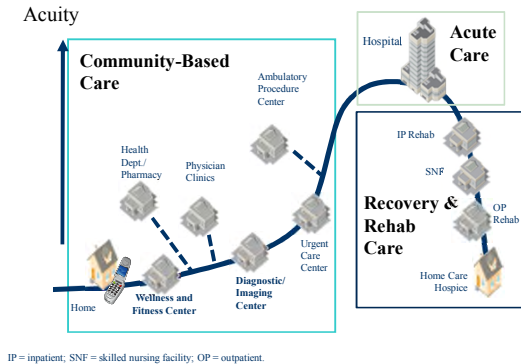
II. Purpose—Why Conduct a CHNA?

- To determine health-related trends and issues of the community
- To understand / evaluate health delivery programs in place.
- To develop strategies to address unmet health needs
- To meet Federal requirements -- both local hospital and health department

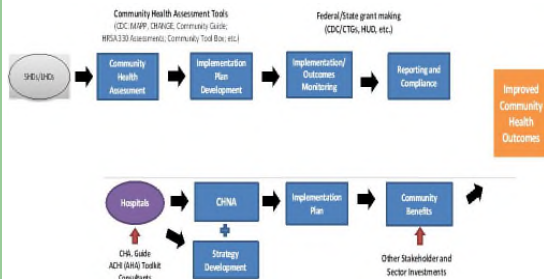
II. Review CHNA Definition

- A Community Health Needs Assessment (CHNA) is a **systematic collection, assembly, analysis, and dissemination of information** about the health of the community. (NOTE: Some the data has already been collected / published by Local, State and Federal public health organizations. Some data will be collected today.)
- A CHNA's role is to identify **factors** that affect the health of a population and **determine the availability of resources** to adequately address those factors.

Future System of Care—Sg2



Community Health Needs Assessment Joint Process: Local Health Department & Hospital



II. CHNA Written Report (Hard copy / Web pdf)

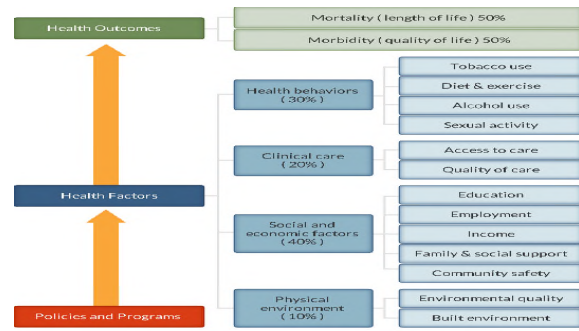
- a **description of the community served**
- a **description of the CHNA process**
- the **identity of any and all organizations and third parties** which collaborated to assist with the CHNA
- a **description of how the organization considered the input of persons representing the community (e.g., through meetings, focus groups, interviews, etc.), who those persons are, and their qualifications**
- a **prioritized description of all of the community needs** identified by the CHNA and
- a **description of the existing health care facilities and other resources within the community** available to meet the needs identified through the CHNA

III. Review Current County Health Status: Secondary Data by 10 Tab Categories and KS State Rankings

TAB 1. Demographic Profile
TAB 2. Economic/Business Profile
TAB 3. Educational Profile
TAB 4. Maternal and Infant Health Profile
TAB 5. Hospitalization / Providers Profile
TAB 6. Behavioral Health Profile
TAB 7. Risk Indicators & Factors
TAB 8. Uninsured Profile
TAB 9. Mortality Profile
TAB 10. Preventative Quality Measures

County Health Rankings -

Robert Wood Johnson Foundation and University of WI Health Institute



County Health Rankings model ©2012 UWPHI

1 Physical Environment (10%)			2b Social and Economic Environment (40%)		
Focus Area	Measure	Description	Focus Area	Measure	Description
Air and water quality (5%)	Air pollution - particulate matter	The average daily measure of fine particulate matter in micrograms per cubic meter (PM2.5) in a county	Community safety (5%)	Violent crime	Violent crime rate per 100,000 population
	Drinking water violations	Percent of population potentially exposed to water exceeding a violation limit during the past year	Injury deaths	Injury mortality	Injury mortality per 100,000
Housing and transit (5%)	Severe housing problems	Percent of households with at least 1 of 4 housing problems: overcrowding, high housing costs, or lack of kitchen or plumbing facilities			
	Driving alone to work	Percent of the workforce that drives alone to work			
	Long commutes - driving alone	Among workers who commute in their car alone, the percent that commute more than 30 minutes			
2a Clinical Care (20%)			3 Health Outcomes (30%)		
Focus Area	Measure	Description	Focus Area	Measure	Description
Access to care (10%)	Uninsured	Percent of population under age 65 without health insurance	Tobacco use	Adult smoking	Percent of adults that report smoking ≥ 100
	Primary care physicians	Ratio of population to primary care physicians	Diet and exercise (10%)	Adult obesity	Percent of adults that report a BMI ≥ 30
	Dentists	Ratio of population to dentists	Food environment index		Index of factors that contribute to a healthy food environment
	Mental health providers	Ratio of population to mental health providers	Physical inactivity		Percent of adults aged 20 and over reporting no leisure time physical activity
Quality of care (10%)	Preventable hospital stays	Hospitalization rate for ambulatory care sensitive conditions per 1,000 Medicare enrollees	Access to exercise		Percent of the population with adequate access to locations for physical activity
	Diabetic screening	Percent of diabetic Medicare enrollees that receive diabetic screening	Excessive drinking		Percent of adults aged 18 and older reporting binge plus heavy drinking
	Mammography screening	Percent of female Medicare enrollees that receive mammography screening	Alcohol and drug use (5%)	Alcohol consumed during driving	Percent of driving deaths with alcohol involvement
				Sexual activity (5%)	Chlamydia rate per 100,000 population
					transmitted infections
2b Social and Economic Environment (40%)			3b / 3c Morbidity / Mortality		
Focus Area	Measure	Description	Focus Area	Measure	Description
Education (10%)	High school graduation	Percent of ninth grade cohort that graduates in 4 years	Births	Birth rate	Birth rate per 1,000 female population, age 15 and over
	Some college	Percent of adults aged 25-44 years with some post-secondary education	Quality of life (5%)	Poor or fair life health	Percent of adults reporting poor or fair poor health (age-adjusted)
Employment (10%)	Unemployment	Percent of population age 16+ unemployed but seeking work		Poor physical or mental health days	Percent of population reporting poor physical or mental health days (age-adjusted)
Income (10%)	Children in poverty	Percent of children under age 18 in poverty		Poor mental health days	Average number of mentally unhealthy days per month (age-adjusted)
Family and social support (5%)	Inadequate social support	Percent of adults without social/emotional support		Low birthweight	Percent of live births with low birthweight (< 3,500 grams)
	Children in single-parent households	Percent of children that live in household headed by single parent	Length of life (5%)	Premature death	Years of potential life lost before age 75 per 100,000 population (age-adjusted)

IV. Collect Community Health Perspectives Ask your opinion. Your thoughts?

- 1) Tomorrow: What is occurring or might occur that would affect the "health of our community?"
- 2) Today: What are the strengths of our community that contribute to health?
- 3) Today: Are there healthcare services in your community / neighborhood that you feel need to be improved and / or changed?

Have We Forgotten Anything ?

- | | |
|-------------------------------|-----------------------------------|
| A.Aging Services | M.Hospice |
| B.Chronic Pain Management | N.Hospital Services |
| C.Dental Care/Oral Health | O.Maternal, Infant & Child Health |
| D.Developmental Disabilities | P.Nutrition |
| E.Domestic Violence, | R.Pharmacy Services |
| F.Early Detection & Screening | S.Primary Health Care |
| G.Environmental Health | T.Public Health |
| H.Exercise | U.School Health |
| I.Family Planning | V.Social Services |
| J.Food Safety | W.Specialty Medical Care Clinics |
| K.Health Care Coverage | X.Substance Abuse |
| L.Health Education | Y.Transportation |
| M.Home Health | Z. Other _____ |

Community Health Needs Assessment

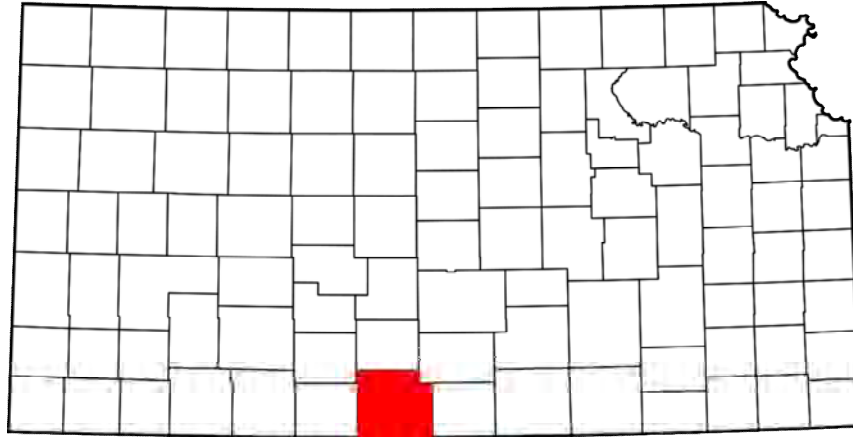
Questions Next Steps?

VVV Consultants LLC
vmvandehaar@aol.com
913 302-7264

II. Methodology

d) Community Profile (A Description of Community Served)

Barber County, Kansas Community Profile



Demographics

The population of Barber County was estimated to be 4,688 on July 1, 2015, and had a -3.6% change in population from April 1, 2010–July 1, 2015.¹ According to the United States Census Bureau, its county seat and most populous city is Medicine Lodge. The county has a total area of 1,136 square miles, of which 1,134 square miles is land and 2.1 square miles is water.² Barber County's population density is 4 persons per square mile and its industries providing employment are Agriculture (forestry, fishing and hunting, and mining) (44.5%), Professional (scientific, management, administrative, and waste management services) (20.3%), Educational (health and social services) (10.9%).³

The major highway transportation is by U.S. Route 160, U.S. Route 281 and Kansas Highway 2.⁴

¹ <https://www.census.gov/quickfacts/table/PST045215/20007>

² U.S. Census Bureaus

³ http://www.city-data.com/county/Barber_County-KS.html

⁴ U.S. Census Bureaus

Barber County, KS - PSA Detail Demographic Profile

			Population			Households		HH	Per Capita
Zip	Name	County	YR 2014	YR 2019	Chg.	YR 2014	YR 2019	Avg. Size	Income 14
67057	Hardtner	BARBER	223	222	-0.4%	106	105	2.1	\$28,121
67061	Hazelton	BARBER	180	185	2.8%	83	87	2.1	\$27,341
67065	Isabel	BARBER	213	213	0.0%	90	91	2.4	\$26,279
67070	Kiowa	BARBER	1,143	1,155	1.0%	519	528	2.2	\$27,062
67071	Lake City	BARBER	69	69	0.0%	29	29	2.4	\$24,755
67104	Medicine Lodge	BARBER	2,576	2,639	2.4%	1,131	1,165	2.3	\$22,906
67138	Sharon	BARBER	386	393	1.8%	166	170	2.3	\$22,346
67143	Sun City	BARBER	83	83	0.0%	41	41	2.0	\$29,085
Totals			4,873	4,959	7.6%	2,165	2,216	2.2	\$25,987

			Population				YR 2014		Females
Zip	Name	County	YR 2014	Pop. 65+	Kids <18	Gen. Y	Males	Females	Age 20_35
67057	Hardtner	BARBER	223	51	55	53	114	109	16
67061	Hazelton	BARBER	180	44	37	42	92	88	13
67065	Isabel	BARBER	213	49	43	50	105	108	16
67070	Kiowa	BARBER	1,143	267	257	274	585	558	84
67071	Lake City	BARBER	69	17	12	15	34	35	6
67104	Medicine Lodge	BARBER	2,576	496	622	715	1,300	1,276	227
67138	Sharon	BARBER	386	79	95	101	200	186	29
67143	Sun City	BARBER	83	22	13	19	41	42	6
Totals			4,873	1,025	1,134	1,269	2,471	2,402	397

			Population				Aver	HH	
Zip	Name	County	White	Black	Amer. Ind.	Hisp.	HH Inc. 14	YR 2014	HH \$50K+
67057	Hardtner	BARBER	213	0	2	6	\$59,160	106	51
67061	Hazelton	BARBER	171	1	1	7	\$58,992	83	44
67065	Isabel	BARBER	204	1	1	6	\$62,194	90	44
67070	Kiowa	BARBER	1,085	4	11	39	\$59,425	519	267
67071	Lake City	BARBER	67	0	0	2	\$58,899	29	12
67104	Medicine Lodge	BARBER	2,446	38	13	55	\$52,115	1,131	482
67138	Sharon	BARBER	365	3	3	7	\$51,897	166	74
67143	Sun City	BARBER	80	1	0	2	\$58,879	41	18
Totals			4,631	48	31	124	\$57,695	2,165	992

Source: ERSA Demographics

III. Community Health Status

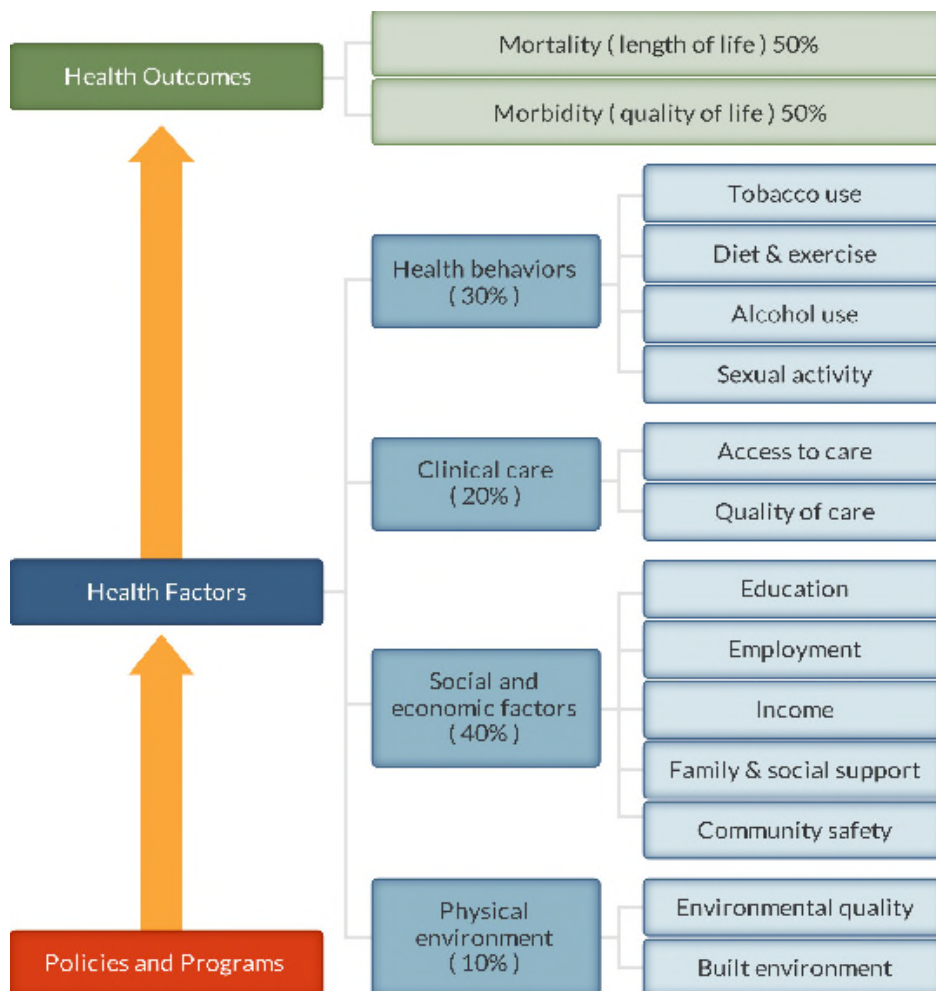
[VVV Consultants LLC]

III. Community Health Status

a) Historical Health Statistics

Health Status Profile

This section of the CHNA reviews published quantitative community health indicators and results of our recent CHNA Town Hall. To produce this profile, VVV Consultants LLC staff analyzed data from multiple sources. This analysis focuses on a set of published health indicators organized by 10 areas of focus (10 Tabs), results from the 2015 County Health Rankings and conversations from Town Hall primary research. **Each table reflects a trend column, with Green denoting growing / high performance indicators, Yellow denoting minimal change / average performance indicators and Red denoting declining / low performance indicators.** (Note: The Robert Wood Johnson Foundation collaborates with the University of Wisconsin Population Health Institute to release annual *County Health Rankings*. As seen below in model, these rankings are based on a number of health factors.)



County Health Rankings model ©2012 UWPHI

Secondary Research

2016 State Health Rankings for Barber County, Kansas

#	Kansas Rank of 105 Counties	Definitions	Barber County	Trend	KS Rural Norm (N=15)
1	Health Outcomes	Length of Life, Quality of Life	85		69
1a	Length of Life	Premature Death	96		64
1b	Quality of Life	Poor / Fair Health, Poor Physical / Mental Health Days, Low Birthweight	43		69
2	Health Factors	Health Behaviors, Clinical Care, Social / Economic Factors, Physical Environment	68		70
2a	Health Behaviors	Tobacco Use, Diet / Exercise, Alcohol / Drug Use, Sexual Activity	79		69
2b	Clinical Care	Access to Care, Quality of Care	85		58
2c	Social and Economic Factors	Education, Employment, Income, Family / Social Support, Community Safety	50		69
2d	Physical Environment	Air / Water Quality, Housing / Transit	28		55
http://www.countyhealthrankings.org , released 2016					
Kansas Rural Norm (N=15) includes the following counties: Barber, Pawnee, Kingman, Kiowa, Harper, Comanche, Crawford, Cherokee, Labette, Cowley, Stafford, Edwards, Montgomery, Wilson and Neosho Counties.					

When considering the state of community health, it's important to review published health data by topic area. Below is a summary of key tabs of information collected:

Tab 1a Demographic Profile

Tab	Health Indicator	Barber County	Trend	State of KS	KS Rural Norm (15)	Source
1a a	Population estimates, July 1, 2015	4,823		2,911,641	14,109	People Quick Facts
1a b	Population, Census, April 1, 2010	4,861		2,853,118	14,513	People Quick Facts
1a c	Population, percent change - April 1, 2010 (estimates base) to July 1, 2015	-0.8%		2.1%	-2.7%	People Quick Facts
1a d	Persons under 5 years, percent, July 1, 2015	6.7%		6.8%	6.3%	People Quick Facts
1a e	Persons under 18 years, percent, July 1, 2015	22.7%		24.7%	23.1%	People Quick Facts
1a f	Persons 65 years and over, percent, July 1, 2015	20.2%		14.6%	19.6%	People Quick Facts
1a g	Female persons, percent, July 1, 2015	48.6%		50.1%	49.6%	People Quick Facts
1a h	White alone, percent, July 1, 2015	95.9%		86.7%	93.0%	People Quick Facts
1a i	Black or African American alone, percent, July 1, 2015	0.9%		6.3%	1.9%	People Quick Facts
1a j	Hispanic or Latino, percent, July 1, 2015	3.8%		11.6%	7.0%	People Quick Facts
1a k	American Indian and Alaska Native alone, percent, July 1, 2015	0.9%		1.2%	1.7%	People Quick Facts
1a l	Asian alone, percent, July 1, 2015	0.6%		2.9%	0.8%	People Quick Facts
1a m	Two or More Races, percent, July 1, 2015	1.7%		2.9%	2.5%	People Quick Facts

Tab 1b Demographic Profile

Tab	Health Indicator	Barber County	Trend	State of KS	KS Rural Norm (15)	Source
1b a	Foreign born persons, percent, 2011-2015	1.4%		6.9%	3.3%	People Quick Facts
1b b	Language other than English spoken at home, percent of persons age 5 years+, 2011-2015	3.8%		11.3%	6.2%	People Quick Facts
1b c	Population per square mile, 2010	4.3		34.9	21.1	Geography Quick Facts
1b d	% Rural	49.1%		25.8%	68.2%	Census Population Estimates
1b e	Persons in poverty, percent	11.1%		13.0%	14.9%	People Quick Facts
1b f	Children in poverty, percent, 2014	17.0%		18.0%	20.9%	Small Area Income and Poverty Estimates
1b g	Veterans, 2011-2015	363		198,396	1,028	People Quick Facts
1b h	August Official Voter Registration Numbers, 2015	2,949		1,705,537	8,897	State of Kansas Office of the Secretary of State

Tab 2a Economic / Business Profile

Tab	Health Indicator	Barber County	Trend	State of KS	KS Rural Norm (15)	Source
2a a	Median household income (in 2015 dollars), 2011-2015	\$51,811		\$52,205	\$44,108	People Quick Facts
2a b	Per capita income in past 12 months (in 2015 dollars), 2011-2015	\$28,174		\$27,706	\$23,309	People Quick Facts
2a c	Housing units, July 1, 2015	2,739		1,253,861	6,773	People Quick Facts
2a d	Owner-occupied housing unit rate, 2011-2015	73.1		66.7	72.2	People Quick Facts
2a e	Median value of owner-occupied housing units, 2011-2015	\$78,100		\$132,000	\$75,153	People Quick Facts
2a f	Households, 2011-2015	1,981		1,113,472	5,581	People Quick Facts
2a g	Persons per household, 2011-2015	2.4		2.5	2.4	People Quick Facts
2a h	Severe housing problems, percent, 2008-2012	7.0%		13.0%	10.5%	Comprehensive Housing Affordability Strategy (CHAS) data
2a i	Living in same house 1 year ago, percent of persons age 1 year+, 2011-2015	89.8%		83.5%	85.8%	People Quick Facts

Tab 2b Economic / Business Profile

Tab	Health Indicator	Barber County	Trend	State of KS	KS Rural Norm (15)	Source
2b a	Grocery stores/1,000 pop, 2012	0.8		NA	0.3	U.S. Department of Agriculture - Food Environment Atlas
2b b	Low income and low access to store, percent, 2010	4.2%		NA	9.2%	U.S. Department of Agriculture - Food Environment Atlas
2b c	Seniors, low access to store, percent, 2010	2.7%		NA	4.8%	U.S. Department of Agriculture - Food Environment Atlas
2b d	SNAP participants (% pop), 2014	10.1%		NA	10.1%	U.S. Department of Agriculture - Food Environment Atlas
7a e	Food Insecurity, percent, 2013	16.0%		14.0%	14.3%	Map the Meal Gap
2b f	All firms, 2012	750		239,118	1,139	Business Quick Facts
2b g	Unemployment, percent, 2014	3.1%		4.5%	4.6%	Bureau of Labor Statistics

Tab 3 Educational Profile

Currently, school districts are providing on-site primary health screenings and basic care.

Tab		Health Indicator	Barber County	Trend	State of KS	KS Rural Norm (15)	Source
3	a	Children eligible for free lunch, percent, 2012-2013	51.0%		40.0%	42.8%	National Center for Education Statistics
3	b	High school graduate or higher, percent of persons age 25 years+, 2011-2015	91.6%		90.2%	89.0%	People Quick Facts
3	c	Bachelor's degree or higher, percent of persons age 25 years+, 2011-2015	20.2%		31.0%	20.6%	People Quick Facts

#	Health Indicators	Barber County North USD 254	South Barber County USD 255
1	Total Public School Nurses	0.2	0
2	School Nurse Part of IEP Team	yes	na
3	Active School Wellness Plan	yes	yes
4	VISION: # Screened / Referred to Prof / Seen by Professional	304/12/10	259/55/22
5	HEARING: # Screened / Referred to Prof / Seen by Professional	304/4/4	256/52/29
6	ORAL HEALTH: # Screened / Referred to Prof / Seen by Professional	0/0/0	119/46/21
7	SCOLIOSIS: # Screened / Referred to Prof / Seen by Professional	0/0/0	0/0/0
8	Students Served with No Identified Chronic Health Concerns	304	260
9	School has Suicide Prevention Program	yes	yes
10	Compliance on Required Vaccinations	95%	98%

TAB 4 Maternal / Infant Health Profile

Tracking maternal and infant care patterns are vital in understanding the foundation of family health.

Tab		Kansas Annual Summary of Vital Statistics, 2015	Barber County	Trend	State of KS
4	a	Total Live Births, 2011	66		39,628
4	b	Total Live Births, 2012	66		40,304
4	c	Total Live Births, 2013	60		38,805
4	d	Total Live Births, 2014	63		39,193
4	e	Total Live Births, 2015	59		39,126
4	f	5-Year Rate	12.9		13.6

TAB 4 Maternal / Infant Health Profile

Tab	Health Indicator	Barber County	Trend	State of KS	KS Rural Norm (15)	Source
4 a	Percent of Births Where Prenatal Care began in First Trimester, 2013-2015	72.9%		80.4%	74.7%	Kansas Health Matters
4 b	Percent of births Where Mother Smoked During Pregnancy, 2013-2015	21.4%		11.8%	18.6%	Kansas Health Matters
4 c	Percentage of Premature Births, 2013-2015	5.5%		8.8%	9.1%	Kansas Health Matters
4 d	Percent of Births with Low Birth Weight, 2013-2015	4.4%		7.0%	7.3%	Kansas Health Matters
4 e	Percent of Births with Inadequate Birth Spacing, 2013-2015	16.9%		10.5%	12.2%	Kansas Health Matters
4 f	Percent of all Births Occurring to Teens (15-19), 2013-2015	8.8%		6.8%	8.8%	Kansas Health Matters
4 g	Percent of Births Occurring to Unmarried Women, 2013-2015	28.0%		36.3%	39.9%	Kansas Health Matters
4 h	Infant Mortality Rate, 2011-2015	0.0		6.2	4.4	Kansas Health Matters
4 i	Percent of Infants Fully Immunized at 24 Months, 2014/2015	93.9%		70.6%	72.9%	Kansas Health Matters
4 j	Average Monthly WIC Participation per 1,000 population, 2015	21.4		21.2	25.6	Kansas Health Matters

TAB 5 Hospitalization / Providers Profile

Understanding provider access and disease patterns are fundamental in healthcare delivery. Listed below are several vital county statistics.

Tab	Health Indicator	Barber County	Trend	State of KS	KS Rural Norm (15)	Source
5 a	Ratio of Primary Care physicians to population, 2013	1,650:1		1,330:1	2,451:1	Area Health Resource File/American Medical Association
5 b	Ratio of Dentists to population, 2014	NA		1,840:1	2,769:1	Area Health Resource File/National Provider Identification file
5 c	Preventable hospital stays per 1,000, 2013	123.0		55.0	69.7	Dartmouth Atlas of Health Care
5 d	Patients who gave their hospital a rating of 9 or 10 on a scale from 0 (lowest) to 10 (highest)	75.0%		77.0%	76.8%	CMS Hospital Compare, 4/1/2015-3/30/2016
5 e	Patients who reported YES, they would definitely recommend the hospital	82.0%		78.0%	77.9%	CMS Hospital Compare, 4/1/2015-3/30/2016
5 f	Average Time Patients Spent in the Emergency Department Before They Were Seen by a Healthcare Professional, minutes	NA		24.0	15.7	CMS Hospital Compare, 4/1/2015-3/30/2016

TAB 5 Hospitalization / Providers Profile

#	KHA PO103	Total Barber County, KS			
		Trend	FFY16	FFY15	FFY14
1	Total Discharges		446	500	539
2	Pediatric Age 0-17		21	18	11
3	Adult Medical / Surgical Age 18-44		26	31	44
4	Adult Medical / Surgical Age 45-64		67	102	88
5	Adult Medical / Surgical Age 65-74		94	80	71
6	Adult Medical / Surgical Age 75+		156	170	175
7	Psychiatric		14	23	30
8	Obstetric		21	28	64
9	Surg %		20.6%	19.0%	19.9%
#	KHA PO103	Kiowa Dist Hosp Only			
		Trend	FFY16	FFY15	FFY14
1	Total Discharges		35	59	75
3	Pediatric Age 0-17		0	1	0
4	Adult Medical / Surgical Age 18-44		1	1	2
5	Adult Medical / Surgical Age 45-64		4	14	13
6	Adult Medical / Surgical Age 65-74		8	5	6
7	Adult Medical / Surgical Age 75+		22	38	51
#	KHA PO103	Med Lodge MH Only			
		Trend	FFY16	FFY15	FFY14
1	Total Discharges		130	139	133
3	Pediatric Age 0-17		4	4	1
4	Adult Medical / Surgical Age 18-44		10	6	15
5	Adult Medical / Surgical Age 45-64		15	25	21
6	Adult Medical / Surgical Age 65-74		29	34	31
7	Adult Medical / Surgical Age 75+		71	69	64
#	Total Emergency Visits (All Zips)	Trend	FFY16	FFY15	FFY14
1	KDH only		613	630	532
2	MLMH only		944	989	1,084

TAB 6 Behavioral Health Profile

Behavioral healthcare provides another important indicator of community health status.

Tab	Health Indicator	Barber County	Trend	State of KS	KS Rural Norm (15)	Source
6 a	Children in single-parent households, percent, 2010-2014	30.0%		29.0%	28.3%	American Community Survey
6 b	Poor mental health days, 2014	3.0		3.0	3.1	Behavioral Risk Factor Surveillance System
6 c	Frequent mental distress, 2014	10.0%		9.0%	9.5%	Behavioral Risk Factor Surveillance System
6 d	Depression: Medicare Population, 2013-2015	14.2%		17.2%	16.2%	Kansas Health Matters
6 e	Percent of Adults Who Were Ever Diagnosed with a Depressive Disorder, 2013-2015	NA		19.4%	20.2%	Kansas Health Matters
6 f	Ratio of Mental Health providers to population, 2015	4,900:1		550:1	1,893:1	CMS, National Provider Identification
6 g	Violent crime rate per 100,000, 2010-2012	221.0		360.0	276.2	Uniform Crime Reporting - FBI
6 h	Alcohol-impaired driving deaths, 2010-2014	57.0%		33.0%	39.7%	Fatality Analysis Reporting System
6 i	Death Rate due to Drug Poisoning, 2012-2014	NA		11.3	14.3	Kansas Health Matters

TAB 7a Risk Indicators / Factors Profile

Knowing community health risk factors and disease patterns can aid in the understanding of next steps to improve health. Being overweight / obese, smoking, drinking in excess, not exercising, etc. can lead to poor health.

Tab	Health Indicator	Barber County	Trend	State of KS	KS Rural Norm (15)	Source
7a c	Poor physical health days, 2014	3.0		3.2	3.3	Behavioral Risk Factor Surveillance System
7a k	Frequent physical distress, 2014	11.0%		10.0%	10.2%	Behavioral Risk Factor Surveillance System
7a b	Physical inactivity, percent, 2012	28.0%		25.0%	29.3%	CDC Diabetes Interactive Atlas
7a d	Adult obesity, percent, 2012	37.0%		30.0%	34.1%	CDC Diabetes Interactive Atlas
7a e	Diabetes prevalence, percent, 2012	11.0%		10.0%	11.1%	CDC Diabetes Interactive Atlas
7a a	Adult smoking, percent, 2014	17.0%		18.0%	18.1%	Behavioral Risk Factor Surveillance System
7a f	Excessive drinking, percent, 2014	16.0%		17.0%	15.3%	Behavioral Risk Factor Surveillance System
7a g	Sexually transmitted infections per 100,000, 2013	246.9		381.6	263.7	National Center for HIV/AIDS, Viral Hepatitis, STD, and TB Prevention
7a h	Mean travel time to work, workers age 16 years+, minutes, 2011-2015	13.5		19.1	16.5	People Quick Facts
7a j	Driving alone to work, 2010-2014	83.0%		82.0%	79.7%	American Community Survey
7a i	Long commute - driving alone, percent, 2010-2014	15.0%		20.0%	19.9%	American Community Survey
7a i	Insufficient sleep, 2014	33.0%		31.0%	30.7%	Behavioral Risk Factor Surveillance System
7a m	Air pollution - particulate matter, average daily density in micrograms per cubic meter, 2011	10.8		10.9	9.9	CDC WONDER environmental data
7a n	Drinking water violations, FY2013-FY2014	No		Yes	Yes	Safe Drinking Water Information System

TAB 7b Risk Indicators / Factors Profile

Tab	Health Indicator	Barber County	Trend	State of KS	KS Rural Norm (15)	Source
7b a	Alzheimer's Disease or Dementia: Medicare Population, 2014	10.2%		10.3%	9.6%	Kansas Health Matters
7b b	Atrial Fibrillation: Medicare Population, 2014	8.8%		8.3%	7.7%	Kansas Health Matters
7b c	Cancer: Medicare Population, 2014	6.8%		7.7%	7.6%	Kansas Health Matters
7b d	Chronic Kidney Disease: Medicare Population, 2013-2015	13.7%		14.7%	14.1%	Kansas Health Matters
7b e	Diabetes: Medicare Population, 2014	22.0%		24.7%	26.2%	Kansas Health Matters
7b f	Heart Failure: Medicare Population, 2014	19.1%		13.1%	15.6%	Kansas Health Matters
7b g	Hyperlipidemia: Medicare Population, 2014	31.2%		39.9%	36.4%	Kansas Health Matters
7b h	Hypertension: Medicare Population, 2014	44.3%		52.9%	52.7%	Kansas Health Matters
7b i	Ischemic Heart Disease: Medicare Population, 2014	30.5%		25.6%	29.0%	Kansas Health Matters
7b j	Stroke: Medicare Population, 2014	1.7%		3.2%	3.0%	Kansas Health Matters

TAB 8 Uninsured Profile

Based on state estimations, the number of insured is documented below. Also, the amount of charity care from area providers is trended below.

Tab	Health Indicator	Barber County	Trend	State of KS	KS Rural Norm (15)	Source
8 a	Uninsured, percent, 2013	15.0%		14.0%	16.0%	Small Area Health Insurance Estimates
8 b	Uninsured adults, percent, 2013	18.0%		17.0%	19.3%	Small Area Health Insurance Estimates
8 c	Uninsured children, percent, 2013	6.0%		6.0%	8.0%	Small Area Health Insurance Estimates

Source: Internal Hospital Records				
	Kiowa District Healthcare	YR 2014	YR 2015	YR 2016
1	Bad Debt	\$96,218	\$117,258	\$118,940
2	Charity Care	\$68,283	\$18,181	\$34,325
Source: Internal Hospital Records				
	Medicine Lodge Memorial Hospital	YR 2014	YR 2015	YR 2016
1	Bad Debt	\$379,593	\$352,434	\$223,830
2	Charity Care	\$17,260	\$24,928	\$15,382

TAB 8 Uninsured Profile

Source: Internal Health Department Records				
	Barber County Health Department	YR 2014	YR 2015	YR 2016
1	Tax dollars used for lab services such as STD, lead, TB, blood, immunizations, Early Detection, dental and water.	\$89,153	\$91,058	\$94,650
2	No primary care or treatment services.	\$0	\$0	\$0
3	Tax dollars for other programs, such as communicable disease epidemiology, Kan-B-Healthy, schools, parenting, nutrition and administration.	\$69,153	\$71,058	\$74,650
4	Vaccine (Received from State)	\$36,653	\$55,970	\$48,990
5	WIC, Women, Infants and Children	\$17,973	\$15,714	\$13,433
6	Environmental Health Services	\$5,617	\$5,790	\$5,970
7	Public Health Emergency Preparedness	\$5,485	\$5,485	\$5,485
8	Family Planning	\$9,661	\$8,134	\$7,004

TAB 9 Mortality Profile

The leading causes of county deaths are listed below. Areas of higher than expected are so noted.

Tab	Health Indicator	Barber County	Trend	State of KS	KS Rural Norm (15)	Source
9 a	Life Expectancy for Males, 2010	75.8		75.8	74.4	Kansas Health Matters
9 b	Life Expectancy for Females, 2010	80.6		80.5	79.7	Kansas Health Matters
9	Age-adjusted Mortality Rate per 100,000 population, 2013-2015	913.4		758.3	869.6	Kansas Health Matters
9 c	Age-adjusted Alzheimer's Disease Mortality Rate per 100,000 population, 2013--2015	37.3		22.0	29.2	Kansas Health Matters
9 d	Age-adjusted Cancer Mortality Rate per 100,000 population, 2013--2015	144.5		164.1	180.7	Kansas Health Matters
9 f	Age-adjusted Chronic Lower Respiratory Disease Mortality Rate per 100,000 population, 2013-2015	60.3		49.5	61.2	Kansas Health Matters
9	Age-adjusted Diabetes Mortality Rate per 100,000 population, 2013-2015	25.9		20.6	32.8	Kansas Health Matters
9	Age-adjusted Heart Disease Mortality Rate per 100,000 population, 2013-2015	274.2		156.4	189.1	Kansas Health Matters
9 e	Age-adjusted Suicide Mortality Rate per 100,000 population, 2013-2015	76.8		15.0	18.4	Kansas Health Matters
9 i	Age-adjusted Traffic Injury Mortality Rate per 100,000 population, 2013-2015	48.9		14.8	29.8	Kansas Health Matters
9 g	Age-adjusted Unintentional Injuries Mortality Rate per 100,000 population, 2013-2015	75.5		40.1	63.9	Kansas Health Matters

TAB 9 Mortality Profile

#	Kansas Annual Summary of Vital Statistics, 2015	Barber County	%	Trend	State of KS	%
	All Causes	70	100.0%		26,611	100.0%
1	Major Cardiovascular Diseases	32	45.7%	16.1%	7872	29.6%
2	Diseases of Heart	28	40.0%	18.9%	5,607	21.1%
3	Ischemic Heart Diseases	14	20.0%	8.5%	3,073	11.5%
4	All Malignant Neoplasms	13	18.6%	-2.4%	5,591	21.0%
5	Other Heart Diseases	13	18.6%	10.0%	2273	8.5%
6	All Other Causes	8	11.4%	-7.1%	4,925	18.5%
7	Residual Infect. & Parasitic Dis.	7	10.0%	7.7%	625	2.3%
8	Malignant Neoplasms of Respiratory and Intrathoracic Organs	5	7.1%	1.3%	1554	5.8%
9	Pneumonia and Influenza	5	7.1%	4.6%	682	2.6%

TAB 10 Preventive Quality Measures Profile

The following table reflects the future health of the county. This information also is an indicator of community awareness of preventative measures.

Tab		Health Indicator	Barber County	Trend	State of KS	KS Rural Norm (15)	Source
10	a	Access to exercise opportunities, percent, 2014	52.0%		76.0%	47.9%	Business Analyst, DeLorme map data, ESRI, & US Census Tigerline Files
10	b	Limited access to healthy foods, percent, 2010	7.0%		8.0%	9.3%	USDA Food Environment Atlas
10	c	Percent of Adults Who Reported Consuming Fruit Less than 1 Time Per Day, 2015	NA		43.7%	48.3%	Kansas Health Matters
10	d	Percent of Adults Who Reported Consuming Vegetables Less than 1 Time Per Day, 2015	NA		22.3%	24.0%	Kansas Health Matters
10	e	Diabetic monitoring, percent, 2013	86.0%		86.0%	84.5%	Dartmouth Atlas of Health Care
10	f	Mammography screening, percent, 2013	53.0%		63.0%	57.8%	Dartmouth Atlas of Health Care
10	g	Percent of Adults Ages 65 Years and Older Who Were Immunized Against Influenza During the Past 12 Months, 2015	62.0%		61.7%	63.8%	Kansas Health Matters
10	h	Percent Annual Check-Up Visit with PCP					TBD
10	i	Percent Annual Check-Up Visit with Dentist					TBD
10	j	Percent Annual Check-Up Visit with Eye Doctor					TBD

Community Feedback Research

For a CHNA, it's also important to gather community perspective from key stakeholders on their views of progress to address the baseline CHNA needs. Below are findings of this online community primary research:

Question 1—Overall Quality of Healthcare Delivery

Barber County, KS - Primary Service Area N=331						
1. In your opinion, how would you rate the "Overall Quality" of healthcare delivery in our community?						
Answer Options	Very Good	Good	Fair	Poor	Very Poor	Valid N
Total PSA N=331	74	161	81	12	3	331
Top 2 Boxes (Very Good / Good)	71.0%		84.4%	12.5%	3.1%	
A. North Barber Only N=131	31	63	30	6	1	131
Top 2 Boxes (Very Good / Good)	71.8%		31.3%	6.3%	1.0%	
B. South Barber Only N=96	25	47	21	2	1	96
Top 2 Boxes (Very Good / Good)	75.0%		21.9%	2.1%	1.0%	
Option C Stakeholders	1,296	2,894	1,239	195	41	5,665
Top 2 Boxes (Very Good / Good)	74.0%		21.9%	3.4%	0.7%	

Question 9—Requested Discussion Items for Town Hall Agenda

Barber County, KS - Primary Service Area N=331					
9. Are there any other health needs listed below that need to be discussed in detail at our upcoming CHNA Town Hall meeting?	Option C Stakeholders Bottom 2 Boxes	Total PSA N=331	Trend	North Barber Only N=131	South Barber Only N=96
Abuse / Violence	4.8%	4.7%		4.8%	4.5%
Alcohol	4.8%	6.3%		6.2%	6.3%
Assisted Living	0.6%	12.1%		13.7%	9.8%
Cancer	4.5%	2.9%		2.6%	3.2%
Diabetes	4.8%	3.3%		3.8%	2.6%
Drugs / Substance Abuse	9.0%	11.2%		12.3%	9.5%
Family Planning	2.9%	2.2%		2.2%	1.9%
Heart Disease	3.6%	2.8%		2.0%	4.0%
Indoor Air	0.0%	0.5%		0.2%	1.1%
Lead Exposure	0.7%	0.4%		0.2%	0.5%
Mental Illness	9.1%	6.7%		6.4%	7.4%
Nutrition	4.8%	3.4%		2.9%	4.2%
Obesity	7.8%	4.6%		4.6%	4.5%
Physical Exercise	5.5%	4.7%		3.5%	6.6%
Poverty	2.9%	5.3%		5.1%	5.6%
Respiratory Disease	2.2%	2.1%		2.2%	1.9%
Sexual Transmitted Infections	4.8%	1.8%		1.8%	1.6%
Suicide	4.0%	8.7%		9.7%	7.4%
Teen Pregnancy	4.0%	3.0%		4.2%	1.3%
Tobacco Use	3.7%	2.7%		2.2%	3.4%
Unsafe Housing	0.2%	3.6%		3.7%	3.7%
Vaccinations	2.9%	1.2%		1.1%	1.3%
Well Water	5.6%	1.5%		1.1%	1.9%
Wellness Education	1.9%	4.5%		3.5%	5.8%
Other (please specify)	1.0%	3.4%		4.0%	2.4%
TOTAL	100.0%	100.0%		100.0%	100.0%

Questions 6-7—Rating of Healthcare Services

Barber County, KS - Primary Service Area N=331					
6. How would our community residents rate each of the following services?	Option C Stakeholders Bottom 2 Boxes	Total PSA N=331	Trend	North Barber Only N=131	South Barber Only N=96
Ambulance Services	5.5%	0.8%		0.8%	1.1%
Assisted Living	57.1%	57.1%		66.3%	* 45.0%
Child Care	18.2%	31.4%		41.6%	* 18.1%
Chiropractors	6.0%	33.3%		24.2%	56.1% *
Early Detection	19.9%	19.9%		23.2%	* 14.6%
Emergency Room	11.2%	2.1%		2.3%	2.2%
Environmental	7.8%	7.8%		10.5%	4.9%
Eye Doctor / Optometrist	7.4%	19.2%		3.3%	61.4% *
Family Planning Services	12.3%	27.6%		21.4%	41.8% *
Home Health	7.9%	54.4%		55.7%	52.8%
Hospice	4.2%	32.2%		42.9%	* 17.6%
Immunizations	1.8%	1.8%		1.6%	2.4%
Inpatient Services	4.3%	3.1%		4.7%	1.2%
Mental Health Services	8.6%	32.3%		27.1%	41.7% *
Nursing Home	15.0%	32.3%		52.9%	* 15.1%
Outpatient Services	4.8%	5.0%		7.3%	2.3%
Parenting	20.1%	20.1%		21.7%	* 16.9%
Pharmacy	5.4%	4.7%		5.4%	3.3%
Primary Care	11.0%	8.7%		10.3%	6.5%
Public Health Department	30.3%	3.7%		1.6%	7.4%
School Nurse	11.0%	22.6%		19.6%	29.7% *
Specialists	7.0%	27.9%		35.5%	* 15.9%
WIC (women infants children)	6.0%	6.0%		8.0%	3.3%

Question 8—Healthcare Services Outside of PSA

Barber County, KS - Primary Service Area N=331					
8. Throughout the past two years, did you or someone you know receive healthcare services outside of our community?	Option C Stakeholders Bottom 2 Boxes	Total PSA N=331	Trend	North Barber Only N=131	South Barber Only N=96
Yes	79.2%	91.2%		91.7%	91.7%
No	14.4%	5.5%		6.1%	4.2%
Don't know	6.4%	3.4%		2.3%	4.2%
TOTALS	100.0%	100.0%		100.0%	100.0%

Question 10—Healthcare Services Outside of PSA

Barber County, KS (Primary Service Area) - N=331				
10. Regarding your personal health practices, are you...				
Answer Options - Percentage (%) YES	Trend	Total PSA N=331	North Barber Only N=131	South Barber Only N=96
a) Eating right (5 servings of fruits and vegetables)		54.9%	56.8%	51.6%
b) Using tobacco products weekly		10.2%	11.4%	8.3%
c) Exercising 2-3 time weekly		60.1%	64.1%	54.7%
d) Consuming alcohol (more than once daily)		4.3%	5.3%	2.1%
e) Living in a home with unsafe water, air, sewer or other problems		1.3%	0.8%	1.0%

IV. Inventory of Community Health Resources

[VVV Consultants LLC]

Inventory of Healthcare Services - Barber County, Kansas				
Cat	Healthcare Services Offered in County: Yes / No	Hospitals	Health Dept.	Other
CLIN	Primary Care	yes	no	yes
HOSP	Alzheimer Center	no	no	yes
HOSP	Ambulatory Surgery Centers	yes	no	no
HOSP	Arthritis Treatment Center	no	no	no
HOSP	Bariatric / Weight Control Services	yes	no	no
HOSP	Birthing / LDR / LDRP Room	no	no	no
HOSP	Blood Pressure	yes	yes	yes
HOSP	Breast Cancer	yes	no	no
HOSP	Burn Care	no	no	no
HOSP	Cardiac Rehabilitation	yes	no	no
HOSP	Cardiac Surgery	no	no	no
HOSP	Cardiology Services	yes	no	no
HOSP	Case Management	yes	no	yes
HOSP	Chaplaincy / Pastoral Care Services	yes	no	yes
HOSP	Chemotherapy	yes	no	no
HOSP	Colonoscopy	yes	no	no
HOSP	Crisis Prevention	yes	no	yes
HOSP	CT Scanner	yes	no	no
HOSP	Diagnostic Radioisotope Facility	no	no	no
HOSP	Diagnostic / Invasive Catheterization	no	no	no
HOSP	Dexa	yes	no	no
HOSP	Electron Beam Computed Tomography (EBCT)	no	no	no
HOSP	Enrollment Assistance Services	yes	no	yes
HOSP	Extracorporeal Shock Wave Lithotripter (ESWL)	no	no	no
HOSP	Fertility Clinic	no	no	no
HOSP	Full Field Digital Mammography (FFDM)	no	no	no
HOSP	Genetic Testing / Counseling	no	no	no
HOSP	Geriatric Services	yes	no	yes
HOSP	Heart	yes	no	no
HOSP	Hemodialysis	yes	no	yes
HOSP	Hemoglobin and Lead Testing	yes	yes	yes
HOSP	HIV / AIDS Services	no	no	no
HOSP	Image-Guided Radiation Therapy (IGRT)	no	no	no
HOSP	Immunizations	yes	yes	yes
HOSP	Inpatient Acute Care	yes	no	no
HOSP	Intensity-Modulated Radiation Therapy (IMRT) 161	no	no	no
HOSP	Intensive Care Unit	no	no	no
HOSP	Intermediate Care Unit	no	no	no
HOSP	Interventional Cardiac Catheterization	no	no	no
HOSP	Isolation Room	yes	no	yes
HOSP	Kidney	yes	no	no
HOSP	Liver	yes	no	no
HOSP	Lung	yes	no	no
HOSP	Magnetic Resonance Imaging (MRI)	yes	no	no
HOSP	Mammograms	no	no	no
HOSP	Mental Health Services	yes	yes	yes
HOSP	Mobile Health Services	no	no	no
HOSP	Multislice Spiral Computed Tomography (<64 Slice CT)	no	no	no
HOSP	Multislice Spiral Computed Tomography (64+ Slice CT)	yes	no	no
HOSP	Neonatal	no	no	no
HOSP	Neurological Services	yes	no	no
HOSP	Obstetrics	no	no	no
HOSP	Occupational Health Services	yes	no	yes
HOSP	Oncology Services	no	no	no
HOSP	Orthopedic Services	yes	no	no
HOSP	Outpatient Surgery	yes	no	no
HOSP	Pain Management	yes	no	no

Inventory of Healthcare Services - Barber County, Kansas				
Cat	Healthcare Services Offered in County: Yes / No	Hospitals	Health Dept.	Other
HOSP	Palliative Care Program	yes	no	yes
HOSP	Pediatric	yes	no	yes
HOSP	Physical Rehabilitation	yes	no	yes
HOSP	Positron Emission Tomography (PET)	no	no	no
HOSP	Positron Emission Tomography / CT (PET / CT)	yes	no	no
HOSP	Psychiatric Services	yes	no	yes
HOSP	Radiology, Diagnostic	yes	no	no
HOSP	Radiology, Therapeutic	no	no	no
HOSP	Reproductive Health	yes	yes	no
HOSP	Robotic Surgery	no	no	no
HOSP	Shaped Beam Radiation System 161	no	no	no
HOSP	Single Photon Emission Computerized Tomography	no	no	no
HOSP	Sleep Center	no	no	no
HOSP	Social Work Services	yes	yes	yes
HOSP	Sports Medicine	yes	no	no
HOSP	STD Testing	yes	yes	yes
HOSP	Stereotactic Radiosurgery	no	no	no
HOSP	Swing Bed Services	yes	no	yes
HOSP	Transplant Services	no	no	no
HOSP	Trauma Center - Level IV	no	no	no
HOSP	Ultrasound	yes	no	no
HOSP	Women's Health Services	yes	yes	yes
HOSP	Wound Care	yes	no	yes
HOSP	VA Choice Providers	yes	no	no
SR	Adult Day Care Program	no	no	yes
SR	Assisted Living	no	no	yes
SR	Foot / Fingernail Care	no	yes	no
SR	Home Health Services	yes	no	yes
SR	Hospice	yes	no	yes
SR	Long-Term Care	no	no	yes
SR	Nursing Home Services	no	no	yes
SR	Retirement Housing	no	no	yes
SR	Skilled Nursing Care	yes	no	yes
ED	Emergency Services	yes	no	no
ED	Urgent Care Center	no	no	no
ED	Ambulance Services	no	no	yes
SERV	Access Point for SNAP / KanCare	no	yes	no
SERV	Alcoholism-Drug Abuse	no	no	yes
SERV	Blood Donor Center	no	no	no
SERV	Car Seat Information	no	yes	no
SERV	Chiropractic Services	no	no	yes
SERV	Complementary Medicine Services	no	no	no
SERV	Dental Services	no	no	yes
SERV	Family Planning Services	no	yes	no
SERV	Fitness Center	no	no	yes
SERV	Head Lice Checks	no	yes	no
SERV	Health Education Classes	yes	yes	yes
SERV	Health Fair	yes	yes	yes
SERV	Health Fair Lab Work	no	yes	no
SERV	Health Information Center	yes	no	yes
SERV	Health Screenings	yes	yes	yes
SERV	Kan-Be-Healthy Physical Assessments	yes	yes	yes
SERV	Meals on Wheels	no	no	yes
SERV	Nutrition Programs	yes	yes	yes
SERV	Patient Education Center	no	no	no
SERV	Permits for Water Wells and Septic Systems	no	yes	no

Inventory of Healthcare Services - Barber County, Kansas				
Cat	Healthcare Services Offered in County: Yes / No	Hospitals	Health Dept.	Other
SERV	Pregnancy Tests	yes	yes	yes
SERV	Pre-school / Daycare Physical Assessments	yes	yes	yes
SERV	Public Health / Community Health Services	no	yes	no
SERV	Real Estate Transfer Inspections	no	yes	no
SERV	Support Groups	yes	no	yes
SERV	TB Skin Tests	yes	yes	yes
SERV	Teen Outreach Services	no	no	yes
SERV	Tobacco Treatment / Cessation Program	no	no	yes
SERV	Transportation to Health Facilities	yes	no	yes
SERV	Water Quality Testing	no	yes	no
SERV	Womens, Infants and Children Nutrition Program	no	yes	no
SERV	Wellness Program	yes	no	yes

**KEY: CLIN = CLINIC, HOSP = Hospital, SR = Senior, ED = Emergency Department and SERV = Service*

Barber County, KS - Area Providers 2017

Providing Services in Medicine Lodge and/or Kiowa, KS

Providers by Specialty	FTE Physicians	PAs / APRNs / Extensors	Visting DRs*
TOTALS			
Primary Care:			
Family Practice	2.0	3.0	
Internal Medicine/Geriatrics			
Obstetrics/Gynecology			
Pediatrics			
Medicine Specialists:			
Allergy/Immunology			
Cardiology			0.2
Dermatology			
Endocrinology			
Gastroenterology			
Hematology/Oncology			
Infectious Diseases			
Nephrology			
Neurology			
Psychiatry			
Pulmonary			
Rheumatology			
Surgery Specialists:			
General Surgery/Colon/Oral			0.5
Neurosurgery			
Ophthalmology			
Orthopedics			
Otolaryngology			
Plastic/Reconstructive			
Thoracic/Cardiovascular/Vascular			
Urology			
Hospital Based:			
Anesthesia/Pain			
Emergency			
Hospitalist (Based on Discharges)			
Radiology			
Pathology			
Neonatal/Perinatal			
Physical Medicine/Rehab	2.0	1.0	
Occupational Medicine			
Podiatry			0.5
Public Health Nurse Specialist		1.0	
Epidemiology Nurse Specialist		1.0	
Dietician		1.0	
Phlebotomy Technician		1.0	
Environmental Health Specialist		1.0	
Pharmacist		1.0	
Wound Care			
Registered Nurse		2.0	
Registered Sanitarian		1.0	
TOTALS	4.0	13.0	1.2

*Total FTE specialists serving community who office outside PSA

Visiting Specialists to Barber County, KS						
Provider Name	Specialty	Credentials	Group Name	Office Address	Location	Days per Month
Thomas Ashcom	Cardiology	MD, PHD, FACC	Cardiovascular Consultants of Kansas, Inc.	Kansas Heart Office Plaza, 9350 E. 35th St. N., Suite 101. Wichita, KS 67226	MLMH	1
Matthew Butler	Cardiology	MD	Cardiovascular Consultants of Kansas, Inc.	Kansas Heart Office Plaza, 9350 E. 35th St. N., Suite 101. Wichita, KS 67226	MLMH	1
Layne Reusser	Cardiology	MD, FACC	Cardiovascular Consultants of Kansas, Inc.	Kansas Heart Office Plaza, 9350 E. 35th St. N., Suite 101. Wichita, KS 67226	KDH	1
Richard Steckley	Cardiology	MD, ACNP, FACC	Cardiovascular Consultants of Kansas, Inc.	Kansas Heart Office Plaza, 9350 E. 35th St. N., Suite 101. Wichita, KS 67226	KDH	1
Scott Gordon	Foot & Ankle Surgeon	DPM	South Central Kansas Bone & Joint Center	Pratt Regional Medical Complex, 203 Watson St #300, Pratt, KS 67124	MLMH	10
Scott Porter	General Surgery, Trauma, and Endoscopy	MD, FACC	Kansas Surgical Consultants	9300 East 29th St N #203, Wichita, KS 67226	KDH	10

Barber County, Kansas Area Healthcare Services

Emergency Numbers

Police / Sheriff	911
Fire	911
Ambulance	911

Non-Emergency Numbers

Barber County Sheriff	(620) 886-5678
Barber County Ambulance	(620) 825-4112

Municipal Non-Emergency Numbers

	Police/Sheriff	Fire
Kiowa	(620) 825-4124	(620) 825-4886
Medicine Lodge	(620) 930-6573	(620) 886-3908

ALCOHOL / DRUG COUNSELING

Alcoholics Anonymous Answering Service
508 S. Main
Pratt, KS 67124
620-672-2533

Alcoholics Anonymous / Alanon Meeting
Tuesdays Evenings
Presbyterian Church Basement
201 N. Walnut
Medicine Lodge, KS 67104
620-886-5958

Celebrate Recovery
Christ Centered 12 Step Recovery Program
Thursdays, 6:30-9:00 PM
First Christian Church
300 S. Main
Medicine Lodge, KS 67104
620-886-3743

Kiowa AA / Alanon
Tuesday Evenings, 7:00 PM
Grace Bible
705 N. 7th
Kiowa, KS 67070
620-825-4647

Horizons Mental Health
102 S. Main
Medicine Lodge, KS 67104
620-886-5057

BARBER COUNTY COMMUNITY HEALTH

Barber County Health Department
211 E. Kansas
Medicine Lodge, KS 67104
620-886-3294

Kiowa Community Building
119 S. 5th St.
Kiowa, KS 67070
620-825-4098

Blood Lead Screening
Breastfeeding Educator
Car Seat
Family Planning
Farmworker Health Program
Food Stamp / KanCare Access Point
Footcare
Immunizations
KanBeHealthy
Kansas Tobacco Quitline
La Leche League
Love and Logic Parenting
Nutrition Education
Water, Septic Permits
WIC

CHILD ABUSE & NEGLECT

Department of Children & Families Office
400 S. Main
Pratt, KS 67124
620-672-5955
www.dcf.ks.gov

CHILD CARE & LICENSING

Deb Rodda
KDHE Southwest District Office
302 McArtor Road
Dodge City, KS 67202
620-225-0596

CHIROPRACTIC

Bruce Kempton, DC
118 S. Main
Medicine Lodge, KS 67104
620-886-5444

CHURCHES**Kiowa**

Apostolic Christian Church
402 S. 11th St.
Kiowa, KS 67070
620-825-4712

Christian Church
220 S. 7th St.
Kiowa, KS 67070
620-825-4400

Congregational United Church
603 Rumsey St.
Kiowa, KS 67070
620-825-4830

Grace Bible Fellowship
705 N. 7th St.
Kiowa, KS 67070
620-825-4177

Kiowa Southern Baptist Church
647 Main St.
Kiowa, KS 67070
620-825-4512

Kiowa United Methodist Church
205 N. 9th St.
Kiowa, KS 67070
620-825-4933

St. John Catholic Church
920 Main St.
Kiowa, KS 67070
620-825-4361

Medicine Lodge

Community Bible Fellowship
2853 Curry Ln.
Medicine Lodge, KS 67104
620-886-9805

First Assembly of God
701 N. Iliff St.
Medicine Lodge, KS 67104
620-886-3588

First Baptist Church
900 N. Guffey St.
Medicine Lodge, KS 67104
620-886-3597

First Christian Church
300 S. Main St.
Medicine Lodge, KS 67104
620-886-3743

Medicine Lodge Presbyterian Church
201 N. Walnut
Medicine Lodge, KS 67104
620-886-5958
Trinity Lutheran Church
908 N. Guffey St.
Medicine Lodge, KS 67104
620-886-3397

United Methodist Church
108 E. 2nd Ave.
Medicine Lodge, KS 67104
620-886-3903

DENTAL

Medicaid Acceptance: Under 19 YO

Erickson & Gill Dentistry
113 N. Anthony
Anthony, KS 67003
620-842-3844

Harlan Shinkle, DDS
610 E. Second St.
Pratt, KS 67124
620-672-5536

Pratt Family Dental
105 W. 4th St.
Pratt, Kansas 67124
620-672-3612

DOMESTIC VIOLENCE

Domestic Violence Hotline
800-799-7233

EARLY HEAD START

Arrowhead West, Inc. Child Services
620 E. 2nd St.
Pratt, KS 67124
620-672-1005
www.arrowheadwest.org

ENERGY / UTILITY ASSISTANCE

Medicine Lodge Ministerial Alliance
Tom Walters, Pastor
300 S. Main St.
Medicine Lodge, KS 67104
620-886-3743

EXTENSION

Robin Eubank-Callis
K-State Research & Extension
118 E. Washington, Courthouse
Medicine Lodge, KS 67104
620-886-3971

FOOD BANK / FINANCIAL ASSISTANCE

Kiowa Food Bank
Kiowa Southern Baptist Church
Ken Bowden, Pastor
647 Main St.
Kiowa, KS 67070
620-825-4512
Medicine Lodge Ministerial Alliance
United Methodist Church
108 E. Second Ave.
Medicine Lodge, KS 67104
620-886-3903

Senior Commodities / CSFP
316-265-3663

HOME HEALTH SERVICES

Heartland Home Health
Wichita, KS 67205
Admin: Lisa Leach
316-788-7626

RN: Mitzi Bailey
316-303-4481

HOSPICE

Harry Hynes Memorial Hospice
202 W. Harvey
Wellington, KS 67152
620-326-8014

Heartland Home Health Care & Hospice
2872 N. Ridge Rd. #122
Wichita, KS 67205
316-788-7626

Interim HealthCare of Wichita, KS
9920 E. Harry St.
Wichita, KS 67207
620-663-2423

INTERMEDIATE CARE FACILITIES

Kiowa District Healthcare
1020 Main St.
Kiowa, KS 67070
620-825-4117

KANSAS ARSON / CRIME

Kansas Arson / Crime Hotline
800-572-7463

KANSAS BUREAU OF INVESTIGATION

Kansas Bureau of Investigation
800-KS-CRIME (800-57-27463)

LAW ENFORCEMENT

Barber County Sheriff's Office
124 E. Washington Ave.
Medicine Lodge, KS 67104
620-886-5678

Kiowa Police Department
1210 E. Main
Kiowa, KS 67070
620-825-4124

Medicine Lodge Police Department
114 W. 1st Ave.
Medicine Lodge, KS 67104
620-930-6573

LEGAL ASSISTANCE

Goering & Slinkard
201 S. Main
Medicine Lodge, KS 67104
620-886-3751

Robert W Christiansen, Attorney
124 E. Kansas
Medicine Lodge, KS 67104
620-886-5611

MEDICAL CARE PROVIDERS

Kiowa District Healthcare
1002 S. 4th St.
Kiowa, KS 67070
620-825-4131

Joseph Cwik, DO / MD
620-825-4131

Melissa Stroh, PA
620-825-4131

Paul Wilhelm, MD
620-825-4131

Medicine Lodge Memorial Hospital
710 N. Walnut
Medicine Lodge, KS 67104
620-886-3771

Medicine Lodge Memorial Hospital / Physicians
Clinic
710 N. Walnut
Medicine Lodge, KS 67104
620-886-5949

Janet Chance, Certified Navigator
620-886-3771

Patty McNamar, DNP, APRN
620-886-5949

Patrick Martin, NP
620-886-5949

Justin Morgan, DO
620-886-5949

Megan Nelson, APRN
620-886-5949

Andrew Posey, DO
620-886-5949

Donald Ransom, Surgeon
620-886-3948

Leigh Schreiner, PA
620-886-5653

Vigilias Specialist Providers (Telemedicine)

Scott Belliston, DO
Neurology

Anjalee Carlson, DO
Hospice / Palliative Care

Belinda Childs, APRN-DM
Great Plains Diabetes
Complex Diabetes

Valerie Creswell, MD
Infectious Disease

Sina Dadfarmay
Internal Medicine
Adult Echocardiography (Fellowship Trained and
Board Certified in Echo)

Jasmeen Dara, MD
Pediatric Infectious Disease / Allergy and
Immunology

Reginald Fears, MD
Physical Medicine and Rehabilitation (Physiatrist
/ PM&R)
Non-Narcotic Pain Management
Rehabilitation Medicine
Wound Care

Diane Greenleaf-Kisner, MS, RDN, LD, CDE
HealthyGreen Nutrition
Dietitian
Certified Diabetic Educator (CDE)
Chronic Kidney Disease
Weight Loss

Raashid Haque, MD
Dermatology

Julie Kovach, MD
Non-Interventional Cardiology

Rhanda Magsalin Eboh, MD
Psychiatry (15 YO and up)

Karim R. Masri, MD, RhMSUS
Rheumatology

TaWanda Mercer, ARNP
Psychiatry (6 YO and up)
ER/Hospital Consults Only

David Miller, MD
Infectious Disease

Thomas Moore, MD
Infectious Disease Consultants of Kansas
Infectious Disease

Wassim Shaheen, MD
Heartland Cardiology
Interventional Cardiology

Iram Sirajuddin, MD
Allergy / Immunology

Dee Spade, DO
Wichita Endocrinology
Pediatric Endocrinology

Amanda Valliant, MD
Wichita Nephrology Group
Nephrology

Jeffrey Vercollone, MD
Endocrinology

MENTAL HEALTH SERVICES

Horizons Mental Health Center
102 S. Main
Medicine Lodge, KS 67104
620-886-5057

PHARMACISTS

Hibbard's Prescription Plus
102 N. Main
Medicine Lodge, KS 67104
620-886-5161

Kiowa's Prescription Plus
530 Main St
Kiowa, KS 67070
620-825-4782

PHYSICAL THERAPISTS

Dan Bertholf, RPT
Medicine Lodge Memorial Hospital
710 N. Walnut
Medicine Lodge, KS 67104
620-886-3771

Lana Smith, PT
Kiowa District Healthcare
1002 S. 4th St.
Kiowa, KS 67070
620-825-4131

POISON CONTROL

Poison Control, Nationwide
800-222-1222

SCHOOLS

Barber County North USD 254
Superintendent: Mark Buck
P.O. Box 288
Medicine Lodge, KS 67104
620-886-3370

Medicine Lodge Grade School
320 N. Walnut St.
Medicine Lodge, KS 67104
620-886-5608

Medicine Lodge Jr-Sr High School
400 W. Eldorado Ave.
Medicine Lodge, KS 67104
620-886-5667

South Barber USD 255
Superintendent: Andi Williams
512 Main
Kiowa, KS 67070
620-825-4115

South Barber Elementary School
913 Main St.
Kiowa, KS 67070
620-825-4114

South Barber Jr-Sr High School
1220 8th St.
Kiowa, KS 67070
620-825-4214

VISION

Maydew - Thibault Optometry LLC
604 N. Walnut
Medicine Lodge, KS 67104
620-886-3222

In accordance with Federal law and U S Department of Agriculture policy, this institution is prohibited from discriminating on the basis of race, color, national origin, sex, age, religion, political beliefs, or disability. (Not all prohibited bases apply to all programs.)

To file a complaint of discrimination, write USDA, Director, Office of Civil Rights, Room 326-W, Whiten Building, 1400 Independence Avenue, SW, Washington, DC 20250-9410 or call (202) 720-5964 (voice and TDD). USDA is an equal opportunity provider and employer.

General Online Healthcare Resources

Doctors and Dentists--General

[AMA Physician Select: Online Doctor Finder](#) (American Medical Association) [DocFinder](#) (Administrators in Medicine) [Find a Dentist](#) (Academy of General Dentistry) [Find a Dentist: ADA Member Directory](#) (American Dental Association) [Physician Compare](#) (Centers for Medicare & Medicaid Services)

Hospitals and Clinics--General

[Find a Health Center](#) (Health Resources and Services Administration) [Find a Provider: TRICARE Provider Directories](#) (TRICARE Management Activity) [Hospital Quality Compare](#) (Centers for Medicare & Medicaid Services)

Doctors and Dentists--Specialists

[ACOG's Physician Directory](#) (American College of Obstetricians and Gynecologists) [ACR: Geographic Membership Directory](#) (American College of Rheumatology) [American College of Surgeons Membership Directory](#) (American College of Surgeons) [American Osteopathic Association D.O. Database](#) (American Osteopathic Association) [ASGE: Find a Doctor](#) (American Society for Gastrointestinal Endoscopy) [Cancer Genetics Services Directory](#) (National Cancer Institute) [Child and Adolescent Psychiatrist Finder](#) (American Academy of Child and Adolescent Psychiatry) [Dystonia: Find a Health Care Professional](#) (Dystonia Medical Research Foundation) [Expert Locator: Immunologists](#) (Jeffrey Modell Foundation) [Find a Dermatologic Surgeon](#) (American Society for Dermatologic Surgery) [Find a Dermatologist](#) (American Academy of Dermatology) [Find a Gastroenterologist](#) (American College of Gastroenterology) [Find a Gynecologic Oncologist](#) (Society of Gynecologic Oncologists) [Find a Hand Surgeon](#) (American Society for Surgery of the Hand) [Find a Hematologist](#) (American Society of Hematology) [Find a Neurologist](#) (American Academy of Neurology) [Find a Pediatric Dentist](#) (American Academy of Pediatric Dentistry) [Find a Pediatrician or Pediatric Specialist](#) (American Academy of Pediatrics) [Find a Periodontist](#) (American Academy of Periodontology) [Find a Physical Medicine & Rehabilitation Physician](#) (American Academy of Physical Medicine and Rehabilitation) [Find a Plastic Surgeon](#) (American Society of Plastic Surgeons) [Find a Podiatrist](#) (American Podiatric Medical Association) [Find a Thyroid Specialist](#) (American Thyroid Association) [Find a Urologist](#) (American Urological Association) [Find an ACFAS Physician](#) (American College of Foot and Ankle Surgeons) [Find an Allergist/Immunologist: Search](#) (American Academy of Allergy, Asthma, and Immunology) [Find an Endocrinologist](#) (Hormone Health Network) [Find an Eye M.D.](#) (American Academy of Ophthalmology) [Find an Interventional Radiologist](#) (Society of Interventional Radiology) [Find an Oncologist](#) (American Society of Clinical Oncology) [Find an Oral and Maxillofacial Surgeon](#) (American Association of Oral and Maxillofacial Surgeons) [Find an Orthopaedic Foot and Ankle MD](#) (American Orthopaedic Foot and Ankle Society) [Find an Otolaryngologist \(ENT\)](#) (American Academy of Otolaryngology--Head and Neck Surgery) [Finding an Eye Care Professional](#) (National Eye Institute) [GI Locator Service](#) (American Gastroenterological Association)

Other Healthcare Providers

[AMTA's Find a Massage Therapist](#) (American Massage Therapy Association) [Cancer Genetics Services Directory](#) (National Cancer Institute) [Find a Diabetes Educator](#) (American Association of Diabetes Educators) [Find a Genetic Counselor](#) (National Society of Genetic Counselors) [Find a Midwife](#) (American College of Nurse-Midwives) [Find a Nurse Practitioner](#) (American Academy of Nurse Practitioners) [Find a Physical Therapist](#) (American Physical Therapy Association) [Find a Professional: Online Directory of Audiology and Speech-Language Pathology Programs](#) (American Speech-Language-Hearing Association) [Find a Registered Dietitian](#) (Academy of Nutrition and Dietetics) [Find a Therapist](#) (Anxiety Disorders Association of America) [Find an Audiologist](#) (American Academy of Audiology) [Manual Lymphatic Drainage Therapists](#) (National Lymphedema Network) [National Register of Health Service Providers in Psychology](#) (National Register of Health Service Providers in Psychology) [NCCAOM: Find Nationally Certified Practitioners](#) (National Certification Commission for Acupuncture and Oriental Medicine) [Search for an Emergency Contraception Provider in the United States](#) (Princeton University, Office of Population Research)

Hospitals and Clinics--Specialized

[Accredited Birth Centers](#) (Commission for the Accreditation of Birth Centers) [Alzheimer's Disease Research Centers](#) (National Institute on Aging) [Cystic Fibrosis Foundation: Find a Chapter](#) (Cystic Fibrosis Foundation) [Cystic Fibrosis Foundation: Find an Accredited Care Center](#) (Cystic Fibrosis Foundation) [Dialysis Facility Compare](#) (Centers for Medicare & Medicaid Services) [FDA Certified Mammography Facilities](#) (Food and Drug Administration) [Find a Free Clinic](#) (National Association of Free Clinics) [Find an Indian Health Service Facility](#) (Indian Health Service) [Find Treatment Centers](#) (American Cancer Society) [Genetics Clinic Directory Search](#) (University of Washington) [Locate a Sleep Center in the United States by Zip Code](#) (American Academy of Sleep Medicine) [MDA ALS Centers](#) (Muscular Dystrophy Association) [Mental Health Services Locator](#) (Substance Abuse and Mental Health Services Administration) [NCI Designated Cancer Centers](#) (National Cancer Institute) [Neurofibromatosis Specialists](#) (Children's Tumor Foundation) [Post-Polio Directory 2011: Post-Polio Clinics, Health Professionals, Support Groups](#) (Post-Polio Health International including International Ventilator Users Network) [Spina Bifida Clinic Directory](#) (Spina Bifida Association of America) [Substance Abuse Treatment Facility Locator](#) (Substance Abuse and Mental Health Services Administration) [Transplant Center Search Form](#) (BMT InfoNet) [U.S. NMDP Transplant Centers](#) (National Marrow Donor Program) [VA Health Care Facilities Locator & Directory](#) (Veterans Health Administration) [Where to Donate Blood](#) (AABB) [Where to Donate Cord Blood](#) (National Marrow Donor Program)

Other Healthcare Facilities and Services

[Alzheimer's Disease Resource Locator](#) (Fisher Center for Alzheimer's Research Foundation) [American College of Radiology Accredited Facility Search](#) (American College of Radiology) [APA District Branch / State Association Directory](#) (American Psychiatric Association) [Directory of Organizations \(Deafness and Communication Disorders\)](#) (National Institute on Deafness and Other Communication Disorders) [Dog Guide Schools in the United States](#) (American Foundation for the Blind) [Eldercare Locator](#) (Dept. of Health and Human Services) [Find a Hospice or Palliative Care Program](#) (National Hospice and Palliative Care Organization) [Find Services \(for People with Vision Loss\)](#) (American Foundation for the Blind) [Find Urgent Care Centers by State](#) (Urgent Care Association of America) [Genetic Testing Laboratory Directory](#) (University of Washington) [Home Health Compare](#) (Centers for Medicare & Medicaid Services) [Medicare: Helpful Contacts](#) (Centers for Medicare & Medicaid Services) [Muscular Dystrophy Association Clinics and Services](#) (Muscular Dystrophy Association) [National Foster Care and Adoption Directory Search](#) (Children's Bureau) [Nursing Home Compare](#) (Centers for Medicare & Medicaid Services) [Organizations That Offer Support Services](#) (National Cancer Institute) [Poison Control Centers](#) (American Association of Poison Control Centers) [Resources and Information for Parents about Braille](#) (American Foundation for the Blind) [State-Based Physical Activity Program Directory](#) (Centers for Disease Control and Prevention) [TSA Chapters in the USA](#) (Tourette Syndrome Association) [Violence against Women: Resources by State](#) (Dept. of Health and Human Services, Office on Women's Health) [Where to Find Hair Loss Accessories and Breast Cancer Products](#) (American Cancer Society)

SOURCE: MedlinePlus provides links to directories to help you find libraries, health professionals, services and facilities. National Library of Medicine (NLM) does not endorse or recommend the organizations that produce these directories, nor the individuals or organizations that are included in the directories.

V. Detail Exhibits

[VVV Consultants LLC]

Patient Origin and Access

[VVV Consultants LLC]



Patient Origin by Region - Inpatient
Barber, KS Residents Treated in KHA Reporting Area
Federal Fiscal Year: 2014

Hospital	Total Discharges		Pediatric Age 0 - 17		Age 18 - 44		Adult Medical/Surgical Age 45 - 64		Age 65 - 74		Age 75+		Psychiatric		Obstetric		Newborn		Surg %
	Cases	%	Cases	%	Cases	%	Cases	%	Cases	%	Cases	%	Cases	%	Cases	%	Cases	%	
Pratt Regional Medical Center - Pratt, KS	140	26.0%	1	0.7%	4	2.9%	13	9.3%	8	5.7%	25	17.9%	1	0.7%	45	32.1%	43	30.7%	25.0%
Medicine Lodge Memorial Hospital - Medicine Lodge, KS	133	24.7%	1	0.8%	15	11.3%	21	15.8%	31	23.3%	64	48.1%	1	0.8%	0		0		8.3%
Kiowa District Healthcare - Kiowa, KS	75	13.9%	0		2	2.7%	13	17.3%	6	8.0%	51	68.0%	1	1.3%	2	2.7%	0		1.3%
Wesley Healthcare - Wichita, KS	73	13.5%	9	12.3%	8	11.0%	24	32.9%	5	6.8%	8	11.0%	0		11	15.1%	8	11.0%	31.5%
Via Christi Hospitals Wichita, Inc. - Wichita, KS	71	13.2%	0		11	15.5%	12	16.9%	11	15.5%	19	26.8%	8	11.3%	5	7.0%	5	7.0%	36.6%
Hutchinson Regional Medical Center - Hutchinson, KS	16	3.0%	0		0		0		0		2	12.5%	14	87.5%	0		0		6.2%
Anthony Medical Center - Anthony, KS	6	1.1%	0		2	33.3%	0		3	50.0%	1	16.7%	0		0		0		
Via Christi Hospital Wichita St. Teresa, Inc. - Wichita, KS	6	1.1%	0		0		1	16.7%	5	83.3%	0		0		0		0		50.0%
Other Hospitals	19	3.5%	0		2	10.5%	4	21.1%	2	10.5%	5	26.3%	5	26.3%	1	5.3%	0		36.8%
Hospital Total	539	100.0%	11	2.0%	44	8.2%	88	16.3%	71	13.2%	175	32.5%	30	5.6%	64	11.9%	56	10.4%	19.9%



Patient Origin by Region - Inpatient
Barber, KS Residents Treated in KHA Reporting Area
Federal Fiscal Year: 2015

Hospital	Total Discharges		Pediatric Age 0 - 17		Age 18 - 44		Adult Medical/Surgical Age 45 - 64		Age 65 - 74		Age 75+		Psychiatric		Obstetric		Newborn		Surg %
	Cases	%	Cases	%	Cases	%	Cases	%	Cases	%	Cases	%	Cases	%	Cases	%	Cases	%	
Medicine Lodge Memorial Hospital - Medicine Lodge, KS	139	27.8%	4	2.9%	6	4.3%	25	18.0%	34	24.5%	69	49.6%	1	0.7%	0		0		1.4%
Pratt Regional Medical Center - Pratt, KS	100	20.0%	2	2.0%	3	3.0%	19	19.0%	12	12.0%	24	24.0%	0		9	9.0%	31	31.0%	22.0%
Wesley Healthcare - Wichita, KS	95	19.0%	9	9.5%	10	10.5%	18	18.9%	11	11.6%	15	15.8%	2	2.1%	16	16.8%	14	14.7%	41.1%
Via Christi Hospitals Wichita, Inc. - Wichita, KS	71	14.2%	2	2.8%	9	12.7%	18	25.4%	13	18.3%	20	28.2%	3	4.2%	3	4.2%	3	4.2%	39.4%
Kiowa District Healthcare - Kiowa, KS	59	11.8%	1	1.7%	1	1.7%	14	23.7%	5	8.5%	38	64.4%	0		0		0		
Hutchinson Regional Medical Center - Hutchinson, KS	12	2.4%	0		0		1	8.3%	0		0		11	91.7%	0		0		
Wesley Woodlawn Hospital & ER - Wichita, KS	6	1.2%	0		1	16.7%	1	16.7%	2	33.3%	2	33.3%	0		0		0		16.7%
Anthony Medical Center - Anthony, KS	5	1.0%	0		0		2	40.0%	2	40.0%	0		1	20.0%	0		0		
Other Hospitals	13	2.6%	0		1	7.7%	4	30.8%	1	7.7%	2	15.4%	5	38.5%	0		0		23.1%
Hospital Total	500	100.0%	18	3.6%	31	6.2%	102	20.4%	80	16.0%	170	34.0%	23	4.6%	28	5.6%	48	9.6%	19.0%



Patient Origin by Region - Inpatient
 Barber, KS Residents Treated in KHA Reporting Area
 Federal Fiscal Year: 2016

Hospital	Total Discharges		Pediatric Age 0 - 17		Age 18 - 44		Age 45 - 64		Age 65 - 74		Age 75+		Psychiatric		Obstetric		Newborn		Surg %
	Cases	%	Cases	%	Cases	%	Cases	%	Cases	%	Cases	%	Cases	%	Cases	%	Cases	%	
Medicine Lodge Memorial Hospital - Medicine Lodge, KS	130	29.1%	4	3.1%	10	7.7%	15	11.5%	29	22.3%	71	54.6%	1	0.8%	0		0		
Wesley Healthcare - Wichita, KS	79	17.7%	9	11.4%	3	3.8%	10	12.7%	13	16.5%	11	13.9%	0		17	21.5%	16	20.3%	30.4%
Via Christi Hospitals Wichita, Inc. - Wichita, KS	77	17.3%	3	3.9%	7	9.1%	17	22.1%	23	29.9%	19	24.7%	2	2.6%	3	3.9%	3	3.9%	42.9%
Pratt Regional Medical Center - Pratt, KS	76	17.0%	4	5.3%	1	1.3%	15	19.7%	9	11.8%	21	27.6%	0		0		26	34.2%	25.0%
Kiowa District Healthcare - Kiowa, KS	35	7.8%	0		1	2.9%	4	11.4%	8	22.9%	22	62.9%	0		0		0		
Hutchinson Regional Medical Center - Hutchinson, KS	10	2.2%	0		0		1	10.0%	0		1	10.0%	8	80.0%	0		0		
Via Christi Hospital Wichita St. Teresa, Inc. - Wichita, KS	8	1.8%	0		1	12.5%	2	25.0%	4	50.0%	1	12.5%	0		0		0		75.0%
Stormont Vail Health - Topeka, KS	5	1.1%	0		0		0		0		2	40.0%	3	60.0%	0		0		
Sumner Regional Medical Center - Wellington, KS	5	1.1%	1	20.0%	1	20.0%	0		0		0		0		1	20.0%	2	40.0%	20.0%
Kiowa County Memorial Hospital - Greensburg, KS	5	1.1%	0		0		0		3	60.0%	2	40.0%	0		0		0		
Other Hospitals	15	3.4%	0		1	6.7%	3	20.0%	5	33.3%	6	40.0%	0		0		0		53.3%
Hospital Total	446	100.0%	21	4.7%	26	5.8%	67	15.0%	94	21.1%	156	35.0%	14	3.1%	21	4.7%	47	10.5%	20.6%

Town Hall Attendees Notes and Feedback

[VVV Consultants LLC]

Barber County, Kansas - 2017 Community Health Needs Assessment Town Halls							
March 15, 2017 - N=74							
IRS Category	Last Name	First Name	Organization	Address	City	ST	Zip
Community leaders.	Allen	Miranda	Citizen				
Representatives from businesses - owners/CEOs of large businesses (local or large corporations with local branches.)	Allen	Stephen	SCTelcom	612 Holmes St.	Kiowa	KS	67070
Leaders in other not-for-profit health care organizations, such as hospitals, clinics, nursing homes and home-based and community-based services.	Armbruster	Melva	Kiowa District Healthcare	505 S. 9th	Kiowa	KS	67070
Leaders in other not-for-profit health care organizations, such as hospitals, clinics, nursing homes and home-based and community-based services.	Armbruster	Robert	Kiowa District Healthcare	505 S. 9th	Kiowa	KS	67070
Leaders in other not-for-profit health care organizations, such as hospitals, clinics, nursing homes and home-based and community-based services.	Becker	Tammy	Medicine Lodge Memorial Hospital	710 N. Walnut St.	Medicine Lodge	KS	67104
Leaders in other not-for-profit health care organizations, such as hospitals, clinics, nursing homes and home-based and community-based services.	Bell	Joyce	Barber County Health Department	211 E. Kansas Ave.	Medicine Lodge	KS	67104
Representatives from businesses - owners/CEOs of large businesses (local or large corporations with local branches.)	Bonewell	Linda	National Gypsum Co.	1218 S.W. Mill Rd.	Medicine Lodge	KS	67104
Leaders in other not-for-profit health care organizations, such as hospitals, clinics, nursing homes and home-based and community-based services.	Bowe	Jennifer	Medicine Lodge Memorial Hospital	710 N. Walnut St.	Medicine Lodge	KS	67104
Leaders in other not-for-profit health care organizations, such as hospitals, clinics, nursing homes and home-based and community-based services.	Boyd	Carla	Medicine Lodge Memorial Hospital	710 N. Walnut St.	Medicine Lodge	KS	67104
Representatives from businesses - owners/CEOs of large businesses (local or large corporations with local branches.)	Bryan	Aimee	Eventures By Aimee	815 Miller St.	Kiowa	KS	67070
Leaders in other not-for-profit health care organizations, such as hospitals, clinics, nursing homes and home-based and community-based services.	Buel	Betty	Medicine Lodge Memorial Hospital	710 N. Walnut St.	Medicine Lodge	KS	67104
Leaders in other not-for-profit health care organizations, such as hospitals, clinics, nursing homes and home-based and community-based services.	Coggins	Dee	Caregiver	125 N. 14th	Kiowa	KS	67070
Community leaders.	Colborn	Alan	Citizen		Medicine Lodge	KS	67104
Leaders in other not-for-profit health care organizations, such as hospitals, clinics, nursing homes and home-based and community-based services.	Davis	Johnnie	Medicine Lodge Memorial Hospital	710 N. Walnut St.	Medicine Lodge	KS	67104
Leaders in other not-for-profit health care organizations, such as hospitals, clinics, nursing homes and home-based and community-based services.	Ediger	Sonja	Medicine Lodge Memorial Hospital	710 N. Walnut St.	Medicine Lodge	KS	67104
Representatives from businesses - owners/CEOs of large businesses (local or large corporations with local branches.)	Eubank-Callis	Robin	K-State Extension	118 E. Washington	Medicine Lodge	KS	67104
Leaders in other not-for-profit health care organizations, such as hospitals, clinics, nursing homes and home-based and community-based services.	Fay	Kay Lee	Lab Supervisor	920 Mauriss	Kiowa	KS	67070
Leaders in other not-for-profit health care organizations, such as hospitals, clinics, nursing homes and home-based and community-based services.	Freeman	Sloane	Freeman Pharmacy LLC	126 N. Main St.	Medicine Lodge	KS	67104
Leaders in other not-for-profit health care organizations, such as hospitals, clinics, nursing homes and home-based and community-based services.	Freeman	Sloane	Kiowa's Prescriptions Plus Pharmacy	530 Main St.	Kiowa	KS	67070
Political, appointed and elected officials.	Garten	Steve	Barber County Commission	204 S. Spring	Medicine Lodge	KS	67104
Leaders in other not-for-profit health care organizations, such as hospitals, clinics, nursing homes and home-based and community-based services.	Gilley	Chris	Medicine Lodge Memorial Hospital	710 N. Walnut St.	Medicine Lodge	KS	67104
Leaders in other not-for-profit health care organizations, such as hospitals, clinics, nursing homes and home-based and community-based services.	Girty	Tara	Kiowa District Healthcare		Kiowa	KS	67070
Leaders in other not-for-profit health care organizations, such as hospitals, clinics, nursing homes and home-based and community-based services.	Goering	Ginger	Hospice		Medicine Lodge	KS	67104
Leaders in other not-for-profit health care organizations, such as hospitals, clinics, nursing homes and home-based and community-based services.	Goodno	Janell	Kiowa District Healthcare		Kiowa	KS	67070
Press (Paper, TV, Radio).	Graves	Austin	97.5 the Quake / Stateline Broadcast	722 Coates	Kiowa	KS	67070
Press (Paper, TV, Radio).	Graves	Summer	97.5 the Quake / Stateline Broadcast	601 Main	Kiowa	KS	67070
Community leaders.	Grice	Diane	Citizen	810 Apache Dr.	Alva	OK	73707
Leaders in other not-for-profit health care organizations, such as hospitals, clinics, nursing homes and home-based and community-based services.	Grismer	Margaret	Kiowa District Healthcare	505 S. 9th	Kiowa	KS	67070
Leaders in other not-for-profit health care organizations, such as hospitals, clinics, nursing homes and home-based and community-based services.	Grismer	Margaret	Kiowa District Healthcare	505 S. 9th	Kiowa	KS	67070
Political, appointed and elected officials.	Harbaug	Paul	Barber County Commission	14862 S.E. Clairmont	Kiowa	KS	67070
Representatives from businesses - owners/CEOs of large businesses (local or large corporations with local branches.)	Helfrich	Carl	Carl G. Helfrich, CPA	610 Main St.	Kiowa	KS	67070
Representatives from businesses - owners/CEOs of large businesses (local or large corporations with local branches.)	Helfrich	Deborah	Carl G. Helfrich, CPA	502 S. 9th St., P.O. Box 92	Kiowa	KS	67070
Leaders in other not-for-profit health care organizations, such as hospitals, clinics, nursing homes and home-based and community-based services.	Humphrey	Abby	Kiowa District Healthcare	505 S. 9th	Kiowa	KS	67070

Barber County, Kansas - 2017 Community Health Needs Assessment Town Halls							
March 15, 2017 - N=74							
IRS Category	Last Name	First Name	Organization	Address	City	ST	Zip
Education officials and staff - school superintendents, principals, teachers and school nurses.	Jacobs	Lacie	Teacher	305 S. 11th	Kiowa	KS	67104
Leaders in other not-for-profit health care organizations, such as hospitals, clinics, nursing homes and home-based and community-based services.	Marsch	Denise	Medicine Lodge Memorial Hospital	710 N. Walnut St.	Medicine Lodge	KS	67104
Leaders in other not-for-profit health care organizations, such as hospitals, clinics, nursing homes and home-based and community-based services.	McClellan	Karen	Southwest Kansas Area Agency on Aging Board	1203 Goodview	Medicine Lodge	KS	67104
Leaders in other not-for-profit health care organizations, such as hospitals, clinics, nursing homes and home-based and community-based services.	McNamar	Jerry	Barber County Health Department	211 E. Kansas Ave.	Medicine Lodge	KS	67104
Leaders in other not-for-profit health care organizations, such as hospitals, clinics, nursing homes and home-based and community-based services.	McNamar	Jerry	Barber County Health Department	211 E. Kansas Ave.	Medicine Lodge	KS	67104
Leaders in other not-for-profit health care organizations, such as hospitals, clinics, nursing homes and home-based and community-based services.	McNamar	Patty	Medicine Lodge Memorial Hospital	710 N. Walnut St.	Medicine Lodge	KS	67104
Leaders in other not-for-profit health care organizations, such as hospitals, clinics, nursing homes and home-based and community-based services.	McNamar	Patty	Medicine Lodge Memorial Hospital	710 N. Walnut St.	Kiowa	KS	67070
The organization's board members.	Miller	Jeff	Kiowa District Healthcare Board	505 S. 9th	Kiowa	KS	67070
Education officials and staff - school superintendents, principals, teachers and school nurses.	Miller	Mike	Home Town Market / USD 255	419 N. 11th	Kiowa	KS	67070
Leaders in other not-for-profit health care organizations, such as hospitals, clinics, nursing homes and home-based and community-based services.	Myers	Brenda	Project Pink	810 Drumm St.	Kiowa	KS	67070
The organization's board members.	Myers	Pat	Kiowa District Healthcare Board	505 S. 9th	Kiowa	KS	67070
Leaders in other not-for-profit health care organizations, such as hospitals, clinics, nursing homes and home-based and community-based services.	Palmer	George	Medicine Lodge Memorial Hospital	710 N. Walnut St.	Kiowa	KS	67070
Community leaders.	Poindexter	Teresa	Citizen		Medicine Lodge	KS	67104
Leaders in other not-for-profit health care organizations, such as hospitals, clinics, nursing homes and home-based and community-based services.	Poland	Anita	Barber County Health Department	211 E. Kansas Ave.	Medicine Lodge	KS	67104
Political, appointed and elected officials.	Porter	Jeffrey	City of Medicine Lodge	114 W. First Ave.	Medicine Lodge	KS	67104
Leaders in other not-for-profit health care organizations, such as hospitals, clinics, nursing homes and home-based and community-based services.	Rankin	Lenis	Medicine Lodge Memorial Hospital	710 N. Walnut St.	Medince Lodge	KS	67104
Leaders in other not-for-profit health care organizations, such as hospitals, clinics, nursing homes and home-based and community-based services.	Rankin	Marge	Barber County Health Department	211 E. Kansas Ave.	Medicine Lodge	KS	67104
Local clergy and congregational leaders.	Richert	Dwain	Community Bible Fellowship	2853 N.E. Curry Ln.	Medicine Lodge	KS	67104
Community leaders.	Ricke	Juanita	Citizen		Medicine Lodge	KS	67104
Representatives from businesses - owners/CEOs of large businesses (local or large corporations with local branches.)	Ringer	Charlotte	The Bunkhouse Bed and Breakfast	1379 N.W. Golderow	Medicine Lodge	KS	67104
Leaders in other not-for-profit health care organizations, such as hospitals, clinics, nursing homes and home-based and community-based services.	Robison	Janet	Barber County EMS	734 Main St	Kiowa	KS	67070
Community leaders.	Schmidt	Eileen	Citizen	107 Grand, P.O. Box 46	Sharon	KS	67138
The Foundation board members	Schrock	Judy	Kiowa District Healthcare Foundation	505 S. 9th	Kiowa	KS	67070
The Foundation board members	Schrock	Judy	Kiowa District Healthcare Foundation	505 S. 9th	Kiowa	KS	67070
Community leaders.	Schrock	Mark	Citizen		Hazleton	KS	67061
Education officials and staff - school superintendents, principals, teachers and school nurses.	Scripsick	Jana	School Nurse				
Leaders in other not-for-profit health care organizations, such as hospitals, clinics, nursing homes and home-based and community-based services.	Sheldon	Linda	Medicine Lodge Memorial Hospital	710 N. Walnut St.	Medicine Lodge	KS	67104
Community leaders.	Smith	Burton	Citizen		Kiowa	KS	67070
Community leaders.	Smith	Jan	Citizen		Kiowa	KS	67070
The Foundation board members	Tucker	Judy	Kiowa District Healthcare Foundation	505 S. 9th	Kiowa	KS	67070
Political, appointed and elected officials.	VanRanken	Tonia	Court Clerk	5144 N.E. Blackmore	Medicine Lodge	KS	67104
The Foundation board members	Whelan	Sarah	Medicine Lodge Memorial Hospital Foundation	710 N. Walnut St.	Medicine Lodge	KS	67104
Leaders in other not-for-profit health care organizations, such as hospitals, clinics, nursing homes and home-based and community-based services.	White	Kevin	Medicine Lodge Memorial Hospital				

Barber County, Kansas - 2017 Community Health Needs Assessment Town Halls							
March 15, 2017 - N=74							
IRS Category	Last Name	First Name	Organization	Address	City	ST	Zip
Leaders in other not-for-profit health care organizations, such as hospitals, clinics, nursing homes and home-based and community-based services.	White	Kevin	Medicine Lodge Memorial Hospital				
Education officials and staff - school superintendents, principals, teachers and school nurses.	Williams	Andi	USD 255	512 Main	Kiowa	KS	67070
Leaders in other not-for-profit health care organizations, such as hospitals, clinics, nursing homes and home-based and community-based services.	Williams	Buddy	Kiowa District Healthcare	505 S. 9th	Kiowa	KS	67070
Leaders in other not-for-profit health care organizations, such as hospitals, clinics, nursing homes and home-based and community-based services.	Williams	Donna	Kiowa District Healthcare	505 S. 9th	Kiowa	KS	67070
Community leaders.	Wilson	Patsy	Citizen		Kiowa	KS	67070
Community leaders.	Withrow	Brian	Citizen		Medicine Lodge	KS	67104
Community leaders.	Withrow	Lisa	Citizen		Medicine Lodge	KS	67104
Press (Paper, TV, Radio).	Wright	Jessica	Gyp Hill Premeire	110 N. Main St	Medicine Lodge	KS	67104

Barber County, KS (Primary Service Area)
Community Health Needs Assessment Town Hall Meetings
03.15.17, Barber County Annex
N=38

Community Members Present

- Parents
- Seniors
- Elected Officials (Barber County Commission)
- Providers
- Pharmacist
- School nurse

TAB 1: Demographic Profile

- Veterans are going to the VA in Wichita or clinics in Barber County
- Persons in poverty is pretty close to the rural norm in actuality

TAB 2: Economic / Business Profile

- Unemployment is higher now

TAB 3: Educational Profile

- Kids are somewhat eating healthy at school
- They cut out soda from the vending machines, but they don't get big enough portions and end up eating junk
- Public health does hearing screenings in Kiowa
- School nurse is the one who gave us the screenings data

TAB 4: Maternal and Infant Profile

- Mothers are smoking during pregnancy
- Don't do OB in Barber County, so mothers are going to Pratt, Wichita or South
- There are people not utilizing WIC who need to

TAB 5: Hospitalization / Provider Profile

- No dentists in Barber County

TAB 10: Preventive Quality Measures Profile

- Don't have a mammography technician in Barber County. Difference between having a specialist and a tech.

Online Feedback

- Drugs are an issue (Prescription, Meth, Marijuana)
- Alcohol is an issue
- Suicide is an issue

Impacting Health in our Community

- Changes in the healthcare plan
- Medicaid expansion in Kansas or lack thereof
- The State's budget (reduced financing)
- Declining agricultural income

STRENGTHS

- Good facilities, both hospital and health department
- Good / long-tenured professional staff at both the hospital and health department
- Community collaboration
- Availability of elderly housing
- Faith-based groups (Ministerial Alliance)
- ED services, including the ambulance
- Good air, public water
- Availability of exercise facilities
- Good schools / school wellness programs
- Local pharmacies
- Volunteer fire department
- Good access to grocery stores
- Vaccination / immunization programs
- Extension office

WEAKNESSES

- Suicide
- Specialists (OB, Ortho, Urology)
- Telehealth
- Child Care
- Drug Use
- Obesity (Nutrition and Fitness)
- Full-Time Primary Care Physician
- Local School Wellness Funding / Services
- Communication of Available Healthcare Programs
- Mental Health Services (Detection and Placement)
- Early Detection (Mammographies)
- School Lunches
- Home Health Services
- Assisted Living
- Dentists
- Heart Disease
- Prenatal Care
- Veterans Care

Barber County, KS (Primary Service Area)
Community Health Needs Assessment Town Hall Meetings
03.15.17, Kiowa Community Center
N=36

Community Members Present

- Parents
- Elected Officials (Commissioner)
- Providers
- Farmers
- Nursing Homes
- Schools

TAB 1: Demographic Profile

- If really sick, mainly going to Wichita. Second would be Oklahoma.
- Not seeing a lot of change in languages other than English being spoken.
- Veterans are going to Wichita or local clinics for care.

TAB 2: Economic / Business Profile

- Have good grocery stores in both Kiowa and Medicine Lodge
- Anyone who wants a job here can find a job, they just want more money.

TAB 3: Educational Profile

- School lunch percentage is accurate. Schools are following the guidelines they are required to follow in terms of the food served.

TAB 4: Maternal and Infant Profile

- Mothers are going to Pratt or Wichita to deliver.
- Mothers are joining WIC in the first year for the formula, but then they quit and drop out before the five-year mark when they could receive food.

TAB 5: Hospitalization / Provider Profile

- Don't have any eyes doctors, as well as dentists.

TAB 7: Risk Indicators & Factors Profile

- No drinking water violations is not correct.

Online Feedback

- Can we aggregate any of this data by age? No, only by zip.
- Have drug issues (Prescription, Meth, Marijuana)

Impacting Health in our Community

- ACA repeal / replace
- Medicaid expansion
- Oil bust
- State of Kansas budget cuts affecting local grants

STRENGTHS

- Good hospital facilities
- Ambulance
- Law enforcement / fire department
- Good schools
- County that works together
- Community engagement
- Special ed cooperative
- Good churches
- Caring providers / staff
- Community food pantry
- Relationships with other providers
- Good pharmacy
- Volunteerism
- Fitness and wellness
- Public health
- Being small and rural means better connections
- School will be providing summer lunches
- Nurses
- Good internet for telemedicine
- Good grocery stores / meals-on-wheels

WEAKNESSES

- One full-time primary care physician locally
- Child care
- Adult daycare
- Assisted living
- Mental health (access, diagnosis, placement and transportation)
- Healthcare transportation
- Communication of available healthcare services
- Home health services
- Specialists (OB, peds, dermatology, ortho, endo, card)
- Obesity (nutrition and fitness)
- Suicide
- Drug abuse
- Health insurance

Community Health Needs Assessment					
Baber County, Kansas - Strengths (Color Cards) N=74					
#	Loc	Today: What are the strengths of our community that contribute to health?	#	Loc	Today: What are the strengths of our community that contribute to health?
1	N	Hospital	187	N	Health department
2	N	Low income health care	188	N	Local pharmacies
3	N	Community collaboration	189	N	Health department
4	N	Clean air	190	N	Clinical care
5	N	Good schools and teacher	191	N	Fire department / volunteers
6	N	Pharmacy	192	N	Walking path
7	N	Volunteers and participation	193	N	Grocery store
8	N	Immunizations and vaccination programs	194	N	Community collaboration
9	N	ER / ambulance	195	N	Religious community
10	N	Exercise	196	N	ER / ambulance
11	N	Health facilities	197	N	Good environment / air and public water
12	N	Our religions	198	N	Two good hospitals and public health facilities - rated well, good help at each facility
13	N	EMS / ER	199	N	Hospitals
14	N	Collaboration of health care groups	200	N	Pharmacy
15	N	Schools	201	N	Ambulance
16	N	Nice hospitals in both communities - good staff	202	N	Ambulance service
17	N	Friendly people	203	N	Ambulance
18	N	Wide open spaces	204	N	Wellness center
19	N	Clean air	205	N	Pharmacy
20	N	Good ER waiting room times	206	N	Quality of care
21	N	Good with immunizations / vaccines	207	N	Trending up in number of providers
22	N	Good pharmacy / staff	208	N	Pharmacy
23	N	Community - we help / support each other	209	N	School staff
24	N	Current med staff is good - North Barber and hospital staff is great	210	N	Hospital ER / ambulance service
25	N	Facilities up-to-date - health department / hospital	211	N	Churches support families
26	N	Good schools / teachers - very caring	212	N	Pharmacies
27	N	EMS / fire department / volunteers	213	N	Caring community
28	N	Clean air	214	N	Churches
29	N	Have a health / public health infrastructure in the county and providers - skilled / complexed	215	N	Schools
30	N	County working / meeting as a whole	216	N	Hospitals
31	N	ER / EMS	217	N	Volunteer / fire department
32	N	Low income / senior housing	218	N	Hospital care
33	N	Good air / public water	219	N	Caring schools teachers / staff
34	N	Good schools	220	N	Ambulance / fire
35	N	Local pharmacy	221	N	Quality of healthcare and providers
36	N	Good access to groceries	222	N	Caring community
37	N	Volunteers	223	N	Primary care physician
38	N	Extension	224	N	Emergency care
39	N	Emergency care and fire department	225	N	Health department services
40	N	ER care - hospitals, professional staff	226	N	Good facilities and used
41	N	Providers that are available	227	N	Good grocery access
42	N	Good wellness availability in the county	228	N	Elder house
43	N	Community collaboration	229	N	Good pharmacy
44	N	Housing for elderly availability	230	N	Volunteer services
45	N	Clergy	231	N	Professional staff
46	N	Volunteer fire department	232	N	Facilities good
47	N	Long term at hospital	233	N	Consumers concerned and optimistic
48	N	Housing for elderly	234	N	Good services but limited
49	N	Grocery with fresh foods	235	N	Good staff
50	N	Good health facilities	236	N	Collaboration and optimistic
51	N	Community cooperation	237	N	Exercise opportunities available
52	N	Available housing for elderly housing	238	N	Good environment
53	N	Clergy and churches - ministerial alliance	239	N	Ministerial / churches
54	N	ER / ambulance	240	N	Good schools / teachers

Community Health Needs Assessment					
Baber County, Kansas - Strengths (Color Cards) N=74					
#	Loc	Today: What are the strengths of our community that contribute to health?	#	Loc	Today: What are the strengths of our community that contribute to health?
55	N	Good environment - water and air	241	N	Wellness education
56	N	Exercise available	242	N	Facilities in excellent condition
57	N	Good schools	243	N	People seem genuinely concerned - collaboration
58	N	Local pharmacy	244	N	Services which are here are top notch - i.e. health department, immunizations
59	N	Volunteer fire department	245	N	ER ambulances
60	N	Ambulance and fire response	246	N	Housing for elderly and poor
61	N	Clinical care - availability	247	N	Good environment
62	N	Length of life - percent good	248	N	Volunteer
63	N	Good health care facilities and public health	249	N	School health - wellness
64	N	Local pharmacies	250	N	Good access to grocery stores
65	N	Wellness center, walking paths, lake	251	N	Vaccinations
66	N	Housing for elderly - low income availability	252	N	Extension office
67	N	Good grocery store	253	N	Good ER services
68	N	Community collaboration	254	N	Exercise opportunities
69	N	Active churches - ministerial alliance	255	N	Providers are available
70	N	Good environment - good air and public water	256	N	Community collaboration
71	N	Long tenured staff	257	N	Good environment
72	N	School	258	N	Good pharmacy
73	N	Hospital facilities - trained personnel	259	N	Volunteers
74	N	Housing opportunities - low income / senior	260	N	Good grocery store
75	N	Local grocery store	261	N	Health care facilities - physical structure
76	N	ER services - emergency	262	N	Quality of health care professionals
77	N	Upgraded hospitals	263	N	Community optimism
78	N	Strong community support	264	N	Health department resources
79	N	Long tenured staff	265	N	Emergency care
80	N	Caring and committed staff and providers	266	N	Local hospital
81	N	School	267	N	Quality health care staff
82	N	Grocery stores	268	N	Environment - water and air, stress
83	N	Access to emergency care	269	N	Volunteer fire department
84	N	Access to physical therapy	270	N	Exercise opportunities
85	N	screening	271	N	Good education
86	N	Access to affordable network of quality healthcare providers	272	N	Pharmacies
87	N	Caring and committed healthcare professionals	273	N	Good ER - hospital (fire)
88	N	Clean and modern facilities	274	N	Morality of community
89	N	Investment in healthcare facilities	275	N	Good air
90	N	Public health programs	276	N	Ministerial alliance
91	N	Access to food	277	N	Volunteers
92	N	EMS	278	N	Extension office
93	N	Healthcare facilities	279	N	4-H
94	N	Good local workers	280	N	Education
95	N	Good hospital	281	N	Exercise and health
96	N	Environment - good air	282	N	We have good emergency room
97	N	EMS service	283	N	Grocery store
98	N	Community cooperation	284	N	Health department
99	N	Eldering housing	285	N	Extension agent
100	N	Churches	286	N	Physical therapy
101	N	Exercise available	287	N	Good environment
102	N	Local pharmacy	288	N	Fire department
103	N	Volunteer - fire	289	N	Ambulance and ER
104	N	Good access to grocery store	290	N	Grocery store in North and South Barber County
105	N	Extension office	291	N	Health department
106	N	Environment	292	N	Extension agents
107	N	ER / EMS service	293	N	Hospitals - upgraded physical faculties
108	N	Hospitals and public health	294	N	Support of community - volunteer and financial
109	N	Exercise opportunities	295	N	Professional staff

Community Health Needs Assessment					
Baber County, Kansas - Strengths (Color Cards) N=74					
#	Loc	Today: What are the strengths of our community that contribute to health?	#	Loc	Today: What are the strengths of our community that contribute to health?
110	N	Pharmacies	296	N	Community collaboration
111	N	Groceries	297	N	Elderly housing
112	N	Extension	298	N	Ministerial alliance
113	N	Community collaboration	299	N	Good environment - air, public water
114	N	Senior housing available	300	N	Exercise and health
115	N	Church participation	301	N	Pharmacy - local
116	N	Volunteer fire department	302	N	Fire department
117	N	Staff	303	N	New hospitals
118	N	Vaccination program	304	N	Good environment - air, public water
119	N	Adequate hospitals to provide care	305	N	EMS services
120	N	Good environment - air quality	306	N	Grocery store
121	N	EMS adequate to support counties	307	N	Low traffic
122	N	Community collaboration	308	N	Exercise opportunities available
123	N	Religious support	309	N	Good access to grocery stores
124	S	Caring people - hospital	310	S	Compassion / honesty
125	S	School	311	S	Interest in improving
126	S	Fire - EMS	312	S	Good facilities
127	S	Church	313	S	Investment in facilities
128	S	Small town bond, caring people	314	S	Interest in health care
129	S	Freedom	315	S	Good facilities at hospital
130	S	EMT and fire department	316	S	Sense of community
131	S	Good churches, willing to help	317	S	Availability of hospital
132	S	Good hospital / facilities	318	S	Barber county health department
133	S	EMT	319	S	Community interest
134	S	Cops	320	S	Facilities
135	S	Fire department	321	S	Service providers / personnel
136	S	Churches	322	S	Schools access to nurse
137	S	Good healthcare facilities	323	S	Small and rural - close knit
138	S	Hospital	324	S	People who work and supply the services in Southern Barber County
139	S	Education - schools	325	S	Hospital facility
140	S	Grocery stores	326	S	EMS services
141	S	Freedom - low crime	327	S	Good people
142	S	EMT / fire department	328	S	Collaboration
143	S	Church	329	S	Basic health care, nice facility, technology, rehab
144	S	Wellness - fitness	330	S	Quality nurses
145	S	Community	331	S	Quality EMS
146	S	Facilities / staff	332	S	Quality environment - no refineries, pollution
147	S	Volunteers - EMS, fire fighters	333	S	One-on-one care
148	S	Schools / teachers	334	S	Quality of care / time spent with patients
149	S	Churches	335	S	Community support of services / events
150	S	Volunteerism	336	S	Ambulance / ER
151	S	New facilities / staff	337	S	Good staff
152	S	Good air, water	338	S	Good facility - new / new equipment
153	S	Relationships - other	339	S	County working together
154	S	Ambulance services - keep them	340	S	Goods schools with dedicated teachers
155	S	Community involvement	341	S	Healthcare with hospital / clinics/ public health / pharmacy / EMS
156	S	Public health	342	S	Volunteerism and participation within county, including fire and ambulance
157	S	Churches	343	S	Relationship with out of town doctors
158	S	Health care services	344	S	Participation / volunteerism
159	S	Public health services	345	S	Normal clinic access
160	S	Community involvement	346	S	Quality care
161	S	Hospital facility - good	347	S	Ambulance / safety care
162	S	Ambulance	348	S	Ambulance and ER
163	S	Good schools	349	S	Hospitals / health department building and staff

Community Health Needs Assessment					
Baber County, Kansas - Strengths (Color Cards) N=74					
#	Loc	Today: What are the strengths of our community that contribute to health?	#	Loc	Today: What are the strengths of our community that contribute to health?
164	S	Good hospitals	350	S	Grocery stores
165	S	Good schools	351	S	Safety services
166	S	Ambulance	352	S	Pharmacy
167	S	Safety police / emergency	353	S	Great hospital
168	S	Good school	354	S	1-2 local doctors
169	S	County or community involvement / volunteers	355	S	Good nursing staff
170	S	Can get school nurses	356	S	ER / ambulance service
171	S	Transparency	357	S	Safety / police / water / fire
172	S	Relationships with outside providers	358	S	Pharmacy
173	S	Grocery stores	359	S	Food bonus
174	S	Meals during summer	360	S	Good hospitals
175	S	Caring providers and staff	361	S	Medical facilities
176	S	Wonderful facilities	362	S	Professional staff
177	S	High speed internet for telemedicine	363	S	Local pharmacies
178	S	Good community involvement	364	S	Hospitals and public health
179	S	Summer school meals	365	S	Ambulance
180	S	Proactive hospital - for future	366	S	Emergency - fire, police
181	S	Physical hospital	367	S	Community involvement
182	S	Emergency	368	S	Churches
183	S	Telemedicine	369	S	Relationships with outside doctors
184	S	Grocery stores	370	S	Volunteers
185	S	Small town	371	S	Excellent health care facilities
186	S	Rural location, less pollutants			

Community Health Needs Assessment					
Barber County, Kansas - Weakness (Color Cards) N=74					
#	Loc	Today: What are the weaknesses of our community that contribute to health?	#	Loc	Today: What are the weaknesses of our community that contribute to health?
1	N	Heart disease	215	N	Heart disease
2	N	Prenatal screening	216	N	Senior care - assisted living and home health care (local)
3	N	School lunch	217	N	Continuum of care
4	N	Home health	218	N	Primary care physician
5	N	LTC	219	N	Specialists - OB, ortho, neurology
6	N	Assisted living	220	N	Dentist
7	N	Dentists who accept Hawk I + XIX	221	N	Obesity
8	N	Veterans	222	N	Child care
9	N	Telehealth	223	N	Drugs
10	N	Child care	224	N	Mental health - suicide
11	N	Drugs	225	N	Heart disease - improve
12	N	Obesity	226	N	Prenatal
13	N	School lunch	227	N	School lunch program
14	N	School lunch - increase quantity, decrease price	228	N	Veterans care
15	N	OB care in county for prenatal	229	N	Improve local school wellness on a regular basis - increased funding
16	N	Dentistry	230	N	Mammography - early detection
17	N	Drug use - Rx and non-Rx	231	N	Quality food
18	N	Suicide prevention - could be related to #4	232	N	Education - communication of what's available
19	N	Child care - lack of	233	N	Telehealth
20	N	Education about home health / hospice	234	N	Assisted living
21	N	Heart failure / heart disease prevention / education	235	N	Mental health / suicide
22	N	Drugs	236	N	Mammography
23	N	Home health / assisted living	237	N	Home health - obesity and eat out healthy
24	N	Suicide	238	N	Primary care physician full-time
25	N	School lunches	239	N	Home health
26	N	Dentist	240	N	Dentist
27	N	Heart	241	N	Child care
28	N	Obesity	242	N	Need home health care - local agency
29	N	Prenatal screening	243	N	Need nursing home / assisted living / LTC
30	N	Veterans care - veterans choice	244	N	No dentist - need badly
31	N	Child care	245	N	Acceptance of services offered
32	N	More specialists	246	N	Improve education surrounding available services
33	N	Medicaid	247	N	Improve heart disease - through education, treatment
34	N	Veterans - choice program	248	N	Obesity
35	N	Prenatal - heart care	249	N	Prenatal care
36	N	Drug	250	N	Child care
37	N	Mental health	251	N	Telehealth
38	N	School meals	252	N	School lunch program
39	N	Home health	253	N	Increased school funding for services
40	N	Assisted living	254	N	Primary care physicians full-time
41	N	Dentist	255	N	Better mental health - access to
42	N	Heart disease	256	N	Obesity
43	N	Home health service	257	N	Drugs
44	N	Assisted living resources - LTC, continuum	258	N	Alcohol
45	N	Mental health care - detection and placement	259	N	Mental health
46	N	Nutrition education and resources	260	N	Assisted living facility
47	N	Provider / patient communication - marketing	261	N	Dentist
48	N	Dentist	262	N	Heart disease
49	N	Heart disease	263	N	One parent homes
50	N	Prenatal care	264	N	Smoking mothers
51	N	PC physician - FTE	265	N	Prenatal care
52	N	Vet care	266	N	Need specialist clinics
53	N	Suicide	267	N	Home health

Community Health Needs Assessment					
Barber County, Kansas - Weakness (Color Cards) N=74					
#	Loc	Today: What are the weaknesses of our community that contribute to health?	#	Loc	Today: What are the weaknesses of our community that contribute to health?
54	N	Telehealth	268	N	Continuum of care system for aging population
55	N	Child care	269	N	Access to quality food / affordable price
56	N	School lunch program	270	N	"In-community" health care professionals
57	N	Drug use	271	N	Full-time doctors
58	N	Obesity - exercise and eat right	272	N	Dentist
59	N	Early detection - mammography	273	N	OB
60	N	Rotating on new specialist	274	N	Education / training families - poverty, health
61	N	Collaboration / support to employers	275	N	Drug / alcohol abuse
62	N	State-of-the-art equipment - investment	276	N	Mental health care providers
63	N	Service delivery at healthcare access points	277	N	Availability of healthcare
64	N	Retention / recruitment of medical professionals	278	N	Addition of dentists
65	N	Mental health	279	N	Need for long term care
66	N	School health program	280	N	Need for counseling, drug, alcohol, suicide
67	N	Prenatal care	281	N	Advertising and letting people know what is offered
68	N	Heart disease	282	N	Need dentist
69	N	Early detection	283	N	Drug abuse
70	N	Obesity	284	N	Prevention key - stop youth starting tobacco
71	N	Drugs	285	N	Long term care
72	N	Dentist	286	N	Better public communication / education
73	N	Long term care	287	N	Child care / day care
74	N	Suicide - mental	288	N	Dentist
75	N	Doctors	289	N	Drug abuse
76	N	Prenatal screening	290	N	Nursing homes - need
77	N	Heart disease	291	N	Assisted living - need
78	N	School health program	292	N	Home health care - have none
79	N	Drugs	293	N	Dentist
80	N	Home health	294	N	School food
81	N	Mental health	295	N	Drugs
82	N	Long term care	296	N	LTC
83	N	Obesity	297	N	People on welfare and then eating - funding habits, pop and junk food
84	N	Improve school wellness	298	N	Need assisted living
85	N	Need a dentist	299	N	Need home health
86	N	Need long term care options	300	N	Full-time MD
87	N	Caring and committed healthcare professionals	301	N	Dentist
88	N	Access to dialysis	302	N	Heart disease - education
89	N	Obesity prevention	303	N	Prenatal care
90	N	Need future MD	304	N	Addressing veteran care
91	N	Control of drug problem	305	N	Mental health services - suicide
92	N	Communications	306	N	Specialist - OB, ortho and neurology
93	N	A home health for shoe ins	307	N	Child care
94	N	Water therapy	308	N	Local physician
95	N	Mental health	309	N	Assisted living facilities / nursing home
96	N	Long term care / assisted living	310	N	Drug use
97	N	More advertising on services provided by health department- when and where	311	N	Alcohol use
98	N	Lunch program - lack of food, junk food, obesity in children	312	N	Children's welfare - are they going home hungry
99	N	State budget down - does all for a full-time school nurse. Only allowed time to do basic screenings / vision / hearing and to ensure immunizations. No time for direct nursing care. Need to address mental health / support for many children tracking care.	313	N	Nutrition education

Community Health Needs Assessment					
Barber County, Kansas - Weakness (Color Cards) N=74					
#	Loc	Today: What are the weaknesses of our community that contribute to health?	#	Loc	Today: What are the weaknesses of our community that contribute to health?
100	N	Mental health in children - addressing and ensuring support provided. Is a tough subject but needs to be addressed and support provided.	314	N	Suicide
101	N	Smoking mothers - education as to what happens to child (i.e. autism), low birth weight. Maybe stress that more to parents.	315	N	School nurse
102	N	Heart disease education	316	N	Heart failure
103	N	Prenatal care	317	N	Smoking mothers
104	N	Need full-time primary care physician	318	N	Getting young people to back community
105	N	Veterans care - veterans choice	319	N	Businesses to community
106	N	Improve school health	320	N	Home health
107	N	Education for available health care programs	321	N	Dentist
108	N	Mental health services - suicide	322	N	Child care
109	N	Specialist - ortho / urology	323	N	School lunch program
110	N	Telehealth - expansion	324	N	Mental health services
111	N	Drug abuse	325	N	Prenatal care
112	N	Obesity - exercise / eating right	326	N	Need dental care in county
113	N	School lunch program	327	N	Improve our percentages in heart failure
114	N	Free lunch program	328	N	Mental health services - suicide
115	N	High cost of health food	329	N	Decrease smoking in pregnant mothers - everyone
116	N	Smoking and drinking education	330	N	Increase budget for school nurse - to further screening
117	N	Suicide	331	N	Nutrition education
118	N	Home health	332	N	Drug and alcohol use
119	N	Smoking mothers - education as to what happens to child (i.e. autism), low birth weight. Maybe stress that more to parents.	333	N	Assisted living
120	N	School lunch	334	N	Getting young people back to community
121	N	Early detection mammography	335	N	Home health services
122	N	Prenatal care	336	N	Specialist in community - ortho, urology
123	N	Home health	337	N	Long term care
124	N	Specialty need care	338	N	Continue veterans care
125	N	Assisted living	339	N	Prenatal care
126	N	Dentist	340	N	Home health
127	N	Heart disease	341	N	Access to specialty care
128	N	Primary care	342	N	Dental
129	N	Veterans care - veterans choice	343	N	Assisted living
130	N	Local school wellness	344	N	Veterans
131	N	Availability of programs	345	N	Suicide / mental health
132	N	Mental health - both detection and placement	346	N	Prenatal care / well baby
133	N	Child care	347	N	Communication of available health services
134	N	Suicide	348	N	Prenatal / well child care - would help increase WIC numbers and developmental screening referral
135	N	Drugs	349	N	Mental health - especially child
136	N	Obesity - exercise / eating	350	N	Dentist
137	N	Access to care - specialty / dental	351	N	Low income health care
138	N	Prenatal care	352	N	Mental health
139	N	Home health	353	N	Suicide prevention
140	N	Assisted living	354	N	School lunches
141	N	Dentist	355	N	Dentist
142	N	Poverty	356	N	Cardiovascular care
143	N	Smoking	357	N	Suicide / mental health
144	S	Depression	358	S	Obesity
145	S	Need full-time doctor	359	S	Home health
146	S	Communication on all levels	360	S	Suicide
147	S	Child care	361	S	Child care and adult daycare

Community Health Needs Assessment					
Barber County, Kansas - Weakness (Color Cards) N=74					
#	Loc	Today: What are the weaknesses of our community that contribute to health?	#	Loc	Today: What are the weaknesses of our community that contribute to health?
148	S	Mental care service	362	S	Education for health department and WIC
149	S	Need full-time MD / PA	363	S	Full-time doctor
150	S	Manner - people getting care out of county	364	S	Assisted living
151	S	Assisted living	365	S	Wellness programs
152	S	Home health	366	S	Chiropractic access
153	S	Need MDs	367	S	Mental health
154	S	Assisted living	368	S	Psychiatrist to prescribe meds for mental health
155	S	Home health	369	S	Long term providers aka doctor - PCP long term and stable
156	S	Facilities for exercise	370	S	Accountable care
157	S	More doctors	371	S	Medicaid expansion
158	S	Assisted living	372	S	Financial health of state
159	S	More economic activity other than As	373	S	Full-time medical providers
160	S	Diversity (ethnic)	374	S	Child care
161	S	Child care	375	S	Assisted living
162	S	Full-time doctor	376	S	Home health
163	S	Mental health services	377	S	Wellness / nutrition
164	S	Communication	378	S	Mental health
165	S	Teen alcohol and drugs	379	S	Suicide / drugs
166	S	Assisted living	380	S	Wellness programs
167	S	Specialist	381	S	Patient transportation
168	S	Need dentist	382	S	Communicating services available
169	S	Heart disease	383	S	Specialist
170	S	Behavioral health	384	S	Drugs / suicide
171	S	Assisted living	385	S	Great need for mental health programs
172	S	Education of health conditions	386	S	Improve wellness care
173	S	Preventive care	387	S	Local doctor in the community - primary care
174	S	Child care / daycare	388	S	Assisted living
175	S	Prenatal care with specialist care in OB/GYN available in county	389	S	Food - students, old, training
176	S	Well baby visits - increase WIC numbers and developmental screening and early detection	390	S	Mental health counseling
177	S	Mental health	391	S	In-county doctors
178	S	Home health	392	S	Transportation
179	S	Assisted living	393	S	Drugs
180	S	Obesity	394	S	Getting the word out
181	S	Consistency in health care - being able to see the same practitioner at every appointment	395	S	Nutrition
182	S	Better communication between hospital board and public	396	S	Drugs
183	S	Availability of child care and adult daycare	397	S	Mental health
184	S	Prenatal care with specialist care - OB/GYN well baby visits	398	S	Doctors
185	S	Mental health - drugs, substance abuse and suicide	399	S	Communications
186	S	Doctor long term	400	S	Suicide
187	S	Assisted living	401	S	Schools
188	S	Home health / assisted living	402	S	Obesity
189	S	Suicide	403	S	Heart
190	S	Heart disease / obesity	404	S	Diabetes
191	S	Prenatal care	405	S	WIC
192	S	Need for doctors and doctors who live in the community	406	S	Elderly
193	S	Need to do a better job of letting community know what services are available - education	407	S	Home health
194	S	Housing	408	S	Nutrition
195	S	Safety for children	409	S	Mental health

Community Health Needs Assessment					
Barber County, Kansas - Weakness (Color Cards) N=74					
#	Loc	Today: What are the weaknesses of our community that contribute to health?	#	Loc	Today: What are the weaknesses of our community that contribute to health?
196	S	MD locally	410	S	Jobs
197	S	Communication - one on one, older and kids	411	S	Too many patients leaving Barber County for medical services
198	S	Early detection	412	S	Home health
199	S	Info about wellness, cooking with healthy foods, exercise classes (affordable)	413	S	Peds twice per month
200	S	Family planning and parent info, WIC	414	S	Child care
201	S	Release of info / knowledge / communication with public	415	S	Marketing
202	S	Behavior / mental services	416	S	Provider needs - PC, dental care, mental health care (access, placement, travel)
203	S	Knowledge about food bank	417	S	Home health services
204	S	Add medical doctors / internist or GP	418	S	Prenatal care
205	S	Add exercise facilities	419	S	Assisted living
206	S	Law enforcement all towns	420	S	Patient transportation to specialist care
207	S	Long term care / nursing home facility	421	S	Specialist care - OB, peds, ortho
208	S	Local doctors - too many out of town	422	S	Obesity
209	S	Providers and full-time	423	S	Health coverage
210	S	Home health	424	S	Child care
211	S	Pediatrician / OB nurse	425	S	Affordable healthcare - insurance
212	S	Affordable health care insurance	426	S	OB - pediatrician
213	S	Knowledge about food banks	427	S	Exercise - affordable
214	S	Drugs / suicide			

Public Notice and Invitation

[VVV Consultants LLC]

From: Margaret Grismer, CEO KDH, Kevin White, CEO MLMH and Jerry McNamar, Administrator BCHD

Date: January 16, 2017

Subject: 2017 Community Health Needs Assessment Online Survey

Kiowa District Healthcare, Medicine Lodge Memorial Hospital and Barber County Health Department are partnering with other community health providers to conduct the 2017 Barber County, Kansas Community Health Needs Assessment (CHNA).

Your feedback and suggestions regarding healthcare delivery in our community are very important to collect as we complete our 2017 CHNA and Implementation Plan. To accomplish this work, a short online survey has been developed:

<https://www.surveymonkey.com/r/BarberCoCHNA2017>.

All 2017 CHNA online feedback is due by Tuesday, February 28. All responses will be confidential. Thank you in advance for your time and support by participating in this important request.

Please hold **Wednesday, March 15 to attend the 2017 CHNA Town Hall meeting** when survey results will be shared. You will be notified of time and place. A light meal will be provided.

Sincerely,

Margaret Grismer, KDH CEO
Jerry McNamar, BCHD Administrator
Kevin White, MLMH CEO

2017 Community Health Needs Assessment— Barber County, Kansas

Media Release 01/16/2017

Over the next four months, Kiowa District Healthcare, Medicine Lodge Memorial Hospital and Barber County Health Department will be partnering with other community health providers to conduct the 2017 Barber County, Kansas Community Health Needs Assessment (CHNA).

The goal of this assessment is to understand progress in addressing community health needs and to collect up-to-date community health perceptions in Barber County, Kansas. To accomplish this work, a short online survey has been developed and is available by going to <https://www.surveymonkey.com/r/BarberCoCHNA2017>.

All community residents are encouraged to **complete the 2017 CHNA online feedback survey by Tuesday, February 28** and to attend the upcoming scheduled **Town Hall meeting** when survey results will be shared **on Wednesday, March 15**. Time and place of meeting will be announced at a later date.

“We hope that the community and health professionals will take advantage of this opportunity to provide input into the future of healthcare delivery in our county,” comments Margaret Grismer, KDH CEO. “The feedback we receive from this assessment is essential to our healthcare planning efforts and the wellness of our primary service area,” adds Kevin White, MLMH CEO. “This work is key to determine health direction for our county,” said Jerry McNamar, BCHD Administrator.

Vince Vandelaar, MBA of VVV Consultants LLC, an independent research firm from Olathe, Kansas, has been retained to conduct this county-wide assessment. If you have any questions about CHNA activities, please call (620) 825-6160.

Kiowa District Healthcare to Host Community Health Needs Assessment Town Hall Meeting on March 15th 2017

In order to gauge the overall healthcare needs of Barber County residents, Kiowa District Healthcare invites the public to participate in a Community Health Needs Assessment (CHNA) Town Hall meeting on Wednesday, March 15 from 11:30-1 or 5:00-6:30.

Please RSVP with your Town Hall meeting location preference using the following link: <https://www.surveymonkey.com/r/BarberCoRSVP> or call the BCHD at (620) 886-3294. Vince Vandehaar, Principal Consultant at VVV Consultants LLC from Olathe, Kansas will facilitate the meetings.

Invite E-mail - Barber County Community Health Needs Assessment Town Halls on Wednesday, March 15

Subject: Hold the Date

Kiowa District Healthcare, Medicine Lodge Memorial Hospital and Barber County Health Department are creating their 2017 Barber County Community Health Needs Assessment (CHNA) report. The goal of this assessment is to understand progress in addressing community healthcare needs and to collect up-to-date community health perceptions.

To continue this county-wide work, Kiowa District Healthcare, Medicine Lodge Memorial Hospital and Barber County Health Department will host two **Town Hall meetings on Wednesday, March 15 from 11:30-1:00 p.m. at the Barber County Annex in Medicine Lodge and/or from 5:00-6:30 p.m. at the Kiowa Community Building in Kiowa.**

Please RSVP with your Town Hall meeting location preference using the following link: <https://www.surveymonkey.com/r/BarberCoRSVP> or call the BCHD at (620) 886-3294. Vince Vandehaar, Principal Consultant at VVV Consultants LLC from Olathe, Kansas will facilitate both sessions.



Community Health Needs Assessment

Barber County, KS – Town Hall Meetings

Kiowa District Healthcare,
Medicine Lodge Memorial Hospital and
Barber County Health Department will
host two Town Hall Meetings on Wednesday, March 15

Option #1: 11:30-1:00 p.m. at
the Barber County Annex in Medicine Lodge
and/or

Option #2: 5:00-6:30 p.m. at
the Kiowa Community Building in Kiowa.

Public is invited to attend.
A light lunch and/or dinner will be provided.

Please join us for this opportunity to share your opinions
and suggestions to improve healthcare delivery
in the Barber County community.

RSVP: <https://www.surveymonkey.com/r/BarberCoRSVP> or call the BCHD at (620)
886-3294.

Detail Primary Research Primary Service Area

[VVV Consultants LLC]

Community Health Needs Assessment

Community Feedback

Methodology

A community feedback survey was created on behalf of the CHNA client to gather primary service area stakeholder feedback on health perceptions and progress in addressing previous CHNA community needs. All community residents were encouraged to take the survey online by entering the following address into their personal browser:
<https://www.surveymonkey.com/r/BarberCoCHNA2017>.

In addition, an invite letter was sent to all primary service area stakeholders (i.e. Schools, County, City, Clergy, Public Health Leaders).

Below is a summary of public response:

Barber County, KS - Primary Service Area N=331				
12. For reporting purposes, are you involved in or are you a ...?	Option C Stakeholders Bottom 2 Boxes	Total PSA N=331	North Barber Only N=131	South Barber Only N=96
Board Member (Hospital / Public Health)	4.2%	2.6%	2.9%	2.2%
Business / Merchant	6.4%	8.0%	7.4%	9.1%
Case Manager / Discharge Planner	0.8%	1.1%	0.7%	1.6%
Civic Club / Chamber	2.9%	5.4%	5.9%	4.8%
Charitable Foundation	5.3%	4.6%	3.3%	6.5%
Clergy / Congregational Leader	1.5%	2.4%	1.1%	4.3%
College / University	2.4%	0.7%	0.7%	0.5%
Consumer Advocate	1.2%	0.9%	0.7%	1.1%
Consumers of Health Care	9.4%	10.7%	10.3%	11.3%
Dentist	0.3%	0.0%	0.0%	0.0%
Economic Development	1.5%	1.1%	1.1%	1.1%
Education Official / Teacher	5.4%	8.5%	8.8%	8.1%
Elected Official (City / County)	1.6%	2.0%	1.8%	2.2%
EMS / Emergency	1.4%	2.0%	2.2%	1.6%
Farmer / Rancher	4.3%	10.2%	10.3%	9.7%
Health Department	1.7%	1.5%	2.2%	0.5%
Hospital	11.8%	7.4%	7.4%	7.0%
Housing / Builder	0.4%	0.4%	0.7%	0.0%
Insurance	1.1%	0.7%	0.7%	0.5%
Labor	1.3%	1.5%	2.2%	0.5%
Law Enforcement	0.5%	0.2%	0.0%	0.5%
Low Income / Free Clinics	0.8%	0.7%	1.1%	0.0%
Mental Health	3.5%	0.7%	0.4%	1.1%
Nursing	8.0%	4.1%	4.4%	3.8%
Other Health Professional	9.4%	2.0%	1.8%	2.2%
Parent / Caregiver	1.3%	14.3%	15.8%	12.4%
Pharmacy	1.0%	0.7%	0.7%	0.5%
Physician (MD / DO)	1.3%	0.2%	0.4%	0.0%
Physician Clinic (MD / DO / PA / NP)	1.3%	0.7%	0.7%	0.5%
Media (Paper, TV, Radio)	0.6%	0.2%	0.4%	0.0%
Senior Care / Nursing Home	1.2%	2.0%	1.8%	2.2%
Social Worker	1.8%	0.0%	0.0%	0.0%
Veteran	1.0%	2.6%	1.5%	4.3%
Welfare / Social Service	3.4%	0.2%	0.4%	0.0%
Other (please specify)	7.2%	6.3%	6.3%	6.5%
TOTAL	100.0%	100.0%	100.0%	100.0%

KEY - CHNA Open End Comments			
CODE	Physician Specialty		CODE Physician Specialty
ALLER	Allergy/Immunology		ONC Oncology/Radiation Oncology
AES	Anesthesia/Pain		OPHTH Ophthalmology
CARD	Cardiology		ORTH Orthopedics
DERM	Dermatology		ENT Otolaryngology (ENT)
EMER	Emergency		PATA Pathology
ENDO	Endocrinology		PEDS Pediatrics
FP	Family Practice (General)		PHY Physical Medicine/Rehabilitation
GAS	Gastroenterology		PLAS Plastic/Reconstructive
SUR	General Surgery		PSY Psychiatry
GER	Gerontology		PUL Pulmonary
HEM	Hematology		RAD Radiology
IFD	Infectious Diseases		RHE Rheumatology
IM	Internal Medicine		VAST Thoracic/Cardiovascular/Vascular
NEO	Neonatal/Perinatal		URL Urology
NEP	Nephrology		MDLV Mid-Level
NEU	Neurology		SURG Surgery
NEUS	Neurosurgery		TEL Telemedicine
OBG	Obstetrics/Gynecology (Delivery)		

KEY - CHNA Open End Comments			
Code	Healthcare Themes		Code Healthcare Themes
VIO	Abuse/Violence		NURSE More Nurse Availability
ACC	Access to Care		NEG Neglect
AGE	Aging (Senior Care/Assistance)		NH Nursing Home
AIR	Air Quality		NUTR Nutrition
ALC	Alcohol		OBES Obesity
ALT	Alternative Medicine		ORAL Oral Surgery
ALZ	Alzheimer's		ORTHOD Orthodontist
AMB	Ambulance Service		OTHR Other
ASLV	Assisted Living		OP Outpatient Services/Surgeries
AUD	Auditory		OZON Ozone
BACK	Back/Spine		PAIN Pain Management
BD	Blood Drive		PARK Parking
BRST	Breastfeeding		PHAR Pharmacy
CANC	Cancer		DOCS Physicians
CHEM	Chemotherapy		FLU Pneumonia / Flu
KID	Child Care		FOOT Podiatrist
CHIR	Chiropractor		POD Podiatrist
CHRON	Chronic Diseases		POV Poverty
CLIN	Clinics (Walk-In, etc.)		PNEO Prenatal
COMM	Communication		PREV Preventative Healthcare

KEY - CHNA Open End Comments			
Code	Healthcare Themes		Code Healthcare Themes
CORP	Community Lead Healthcare		PRIM Primary Care:
CONF	Confidentiality		PROS Prostate
DENT	Dentists		DOH Public Health Department
DIAB	Diabetes		QUAL Quality of care
DIAL	Dialysis		REC Recreation
DUP	Duplication of Services		RESP Respiratory Disease
ECON	Economic Development		NO Response "No Changes," etc.
EMER	Emergency Room		SANI Sanitary Facilities
EMS	EMS		SNUR School Nurse
EYE	Eye Doctor/Optomtrist		STD Sexually Transmitted Diseases
FAC	Facility		SMOK Smoking
FAM	Family Planning Services		SS Social Services
FEM	Female (OBG)		SPEC Specialist Physician care
FINA	Financial Aid		SPEE Speech Therapy
FIT	Fitness/Exercise		STRK Stroke
ALL	General Healthcare Improvement		DRUG Substance Abuse (Drugs/Rx)
GEN	General Practice		SUIC Suicide
GOV	Government		TPRG Teen Pregnancy
HRT	Heart Care		THY Thyroid
HIV	HIV/AIDS		TOB Tobacco Use
HH	Home Health		TRAN Transportation
HSP	Hospice		TRAU Trauma
HOSP	Hospital		TRAV Travel
MAN	Hospital Management		ALCU Underage Drinking
INFD	Infidelity		INSU Uninsured/Underinsured
IP	Inpatient Services		URG Urgent Care/After Hours Clinic
LEAD	Lead Exposure		VACC Vaccinations
BIRT	Low Birth Weight		VETS Veteran Care
LOY	Loyalty		WAG Wages
MAMO	Mammogram		WAIT Wait Times
MRKT	Marketing		H2O Water Quality
STFF	Medical Staff		WELL Wellness Education/Health Fair
BH	Mental Health Services		WIC WIC Program

CHNA Community Feedback 2017						
Barber County, Kansas (Primary Service Area) N=331						
ID	Zip	Overall HC Rating	c1	c2	c3	What are our "local healthcare providers and agencies" currently doing that needs to be improved and/or changed in our community?
1121	67112	Good	ACC	CLIN	EMER	An after hours walk-in clinic that's not part of the hospital's emergency treatment center would be a great help for many.
1092	67104	Good	ACC	CLIN		Coverage earlier in the morning at the clinic and Friday afternoons
1033	67070	Good	ACC	TRAUM	EMER	It would be good to have more services available such as increased trauma care in ER and more advanced testing such as MRI, etc.
1020	67104	Good	ACC	WAIT	COMM	We need to make our healthcare available at convenient times, so to attract more clients to our institutions. We need to decrease waiting times for our patients. We need to improve on our customer courtesy.
1014	67104	Good	ACC			It would be nice if we could have someone there on Friday afternoons.
1039	67104	Good	ACC			need some way of early Appointments.
1074	67070	Very Poor	ADM	KDH		Get rid of the administration and pas in Kiowa.
1111	67138	Fair	ASTLIV			There is a need for an assisted living facility in our community.
1027	67070	Good	BH	ACC		Behavioral Health is an are we need improvement, it is not always available when needed
1061	67070	Good	BH	DRUG		Mental health and drug abuse
1123	67210	Very Good	BH			need to address depression attacking our community
1059	67070	Fair	BILL	INSUR	COMM	The billing system is a mess, it's practically unreadable and when there is a problem the staff hasn't had the training to actually be able to fix the problem. Double billings, not running insurance, not communicating when there is a problem to try to get it resolved and other problems also have occurred fairly regularly among multiple patients.
1042	67104	Fair	BILL	MLMH	CLIN	The two separate billing systems between the ML hospital and clinic makes it hard to keep up with what is due where and to who. It would be nice to consolidate. The nurses at the Medicine Lodge ER have a central nurses station. When my grandfather was in the hospital it was hard to find a nurse. They would be in the nurses station on their phones and were very rude when you needed help. There needs to be a cellphone policy at that facility.
1037	67104	Very Poor	BILL	STAFF		Billing department is doing illegal things by harassing patients that are trying to pay there bill but may not pay what they think should pay. As long as a payment is made you should not send nasty letters or Harmon lady in ML making nasty phone calls. would not use our system because of this
1058	67070	Very Good	BILL			I think the billing paperwork is cumbersome and confusing. Seems like a lot of paper to send every patient.
1110	67138	Fair	BOARD	MLMH	MRKT	would like to see our board meeting minutes printed in the paper for medicine lodge hospital not a big secret
1041	67070	Very Good	CLIN	COMM	SPEC	partner with surrounding clinics/hospitals for possible specialties: one specialize in women's care, one in another, one in yet another. PLEASE attract more specialists to come, even if they can come only once per month. check out the Computer software (for medical) by the very fast growing, very good company "Cerner" in Kansas City.
1095	67070	Very Good	CLIN	COMM		Rural health clinic call back procedures need to be improved.
1055	67070	Good	CLIN	COST		-clinic office calls cost too much
1040	67070	Good	CLIN	WAIT		I have called to get an appointment at the clinic and told no openings until a later date. I go to clinic and there seems to be no one waiting in waiting room. Seems kind of strange.
1010	67104	Fair	CLIN			hospital clinic
1082	67070	Good	COMM	CLIN	EMER	Sharing of information between clinic and emergency room. Same patient and their medication list can't be looked up during a high stress situation. it is very difficult to remember everything from name to dosage times and strength.

CHNA Community Feedback 2017						
Barber County, Kansas (Primary Service Area) N=331						
ID	Zip	Overall HC Rating	c1	c2	c3	What are our "local healthcare providers and agencies" currently doing that needs to be improved and/or changed in our community?
1071	67104	Very Good	COMM	CLIN	MLMH	Communication between the ML clinic and ML hospital seems to need significant improvement. One hand doesn't seem to agree with how the other is doing some things. At a recent stay in the hospital, I was told that the clinic and hospital had different ways to accomplish a certain task. In addition, to get my health records online, I understand I have to do it twice -- once for the ML hospital records and one for the ML clinic records.
1024	67104	Good	COMM	DOCS	BOARD	They need to work toward less all new programs and care for needs of patients first. Communication between local and specialty physicians lacks, especially if the local entity does not order testing. There is a need for a board with less tenure and more actual knowledge of medical needs. The administrator is not always right.
1071	67070	Good	COMM	DOCS		It would be beneficial if we were able to have more continuity of care among the providers.
1021	67104	Very Good	COMM	INSUR	ELDER	I don't know that this is the responsibility of our local agencies, but information and help with Medicare and Medicaid for the elderly is needed.
1102	67070	Good	COMM	MRKT		1. Gentle information output 2. Better communication to patients 3. Find a way to get the public's attention with positive information
1023	67070	Fair	COMM	MRKT		Be more community friendly
1003	67104	Good	COMM	MRKT		Better communications, Facebook, newsletters, web-sites
1101	67104	Good	COMM	MRKT		More transparency. Better communication from the top of these organizations with the general public and the patients in Barber County.
1073	67070	Fair	COMM	POD	RAD	More in depth look at patients. Went in to have a foot looked at... said tendons torn lose but no MRI or X-ray to determine more.
1036	67104	Good	COMM	RAD	HOL	Follow up on testing results that must be done outside our healthcare system (i.e. reading of sonograms, MRI's, etc. done in Wichita). Making more holistic practitioners available
1117	67138	Good	COMM	RX		need to be more aware of the side effects to some medicine
1049	67104	Good	COMM	SPEC		Communication with specialists should be better for those with complex health issues.
1043	67070	Good	COMM	STAFF		Some need to be more friendly, especially when in the public not at work.
1090	67070	Very Good	COMM	WAIT		COMMUNICATING TO THEIR PATIENTS IN A VERY TIMELY MATTER WITH TEST RESULTS. AS A PATIENT WHEN I HAVE TESTS RUN, I WANT THE RESULTS ASAP BECAUSE I AM MAYBE NERVOUS OR CONCERNED ABOUT WHAT IT MIGHT BE.
1047	67070	Good	COMM	WAIT		communication - timeliness -
1066	67104	Fair	COMM			attitude change
1003	67057	Fair	COMM			Be more concerned with the patients concerns.
1093	67104	Fair	COMM			better confidentiality.
1088	67070	Fair	COMM			Continuity of care is a problem. Rotating days makes follow-ups slow and difficult.
1055	67104	Very Good	COMM			follow up care
1084	67104	Good	COMM			Follow ups without hesitation
1057	67070	Very Good	COMM			Help patients become engaged in their own care and take a proactive approach at home.
1068	67104	Very Good	COMM			If anything it would be the amount of time that they stay with the patient.

CHNA Community Feedback 2017						
Barber County, Kansas (Primary Service Area) N=331						
ID	Zip	Overall HC Rating	c1	c2	c3	Throughout the past two years, did you or someone you know receive healthcare services outside of our community?
1089	67070	Very Good	ALVA	GAST	SURG	Relative went to Alva, OK to have gallbladder surgery because she was unhappy that the surgeon in Kiowa couldn't operate as soon as she would have liked
1058	67070	Very Good	ARTH	OPT		Arthritis, optometrist,
1063	67070	Good	BH	HORIZ	ML	Therapy. We don't provide any help like that in our community. Nearest is Horizons Mental Healthcare Facility. They operate in Medicine Lodge and Anthony which are close.
1070	67070	Very Good	BH			Mental health
1002	73722	Very Good	BH			Mental health
1061	67070	Good	BH			Mental health care
1062	67070	Good	BH			Mental health care
1004	67057	Good	BH			Psychiatrist
1036	67070	Good	CANC	OPT		Cancer, vision
1097	67104	Good	CANC	ORTHO	SURG	Cancer Wife & me hand surgery
1034	67070	Good	CANC	THYR	DIAB	Cancer /thyroid/ diabetes/ eye dr.
1041	67070	Very Good	CANC	UROL	DENT	Cancer Dr, Urologist, Dental surgery, Heart Dr, Orthopaedic Dr, (all Wichita)
1061	67104	Good	CARD	ALL	OBG	Cardiologist, allergist, gynecologist, mammogram
1105	67104	Fair	CARD	CANC	NEPH	heart, cancer, kidney, dental, urology
1048	67070	Poor	CARD	ENID	UROL	Cardiology in Enid, + Urology in Wichita+
1030	67070	Very Good	CARD	GAST	COLON	cardiologist, abdominal surgery, colonoscopy
1081	67104	Good	CARD	KCMH	HUTCH	Dad heart hospital. Son, Greensburg to former doctor. Husband, Hutchinson and Pratt.
1068	67104	Very Good	CARD	NEPH	LUPUS	Heart, kidney, lupus
1033	67070	Good	CARD	OPHT		Cardiologist, Ophthamologist
1021	67070	Fair	CARD	ORTHO	SURG	Heart - Back Surgery
1052	67070	Good	CARD	ORTHO		cardiology, joint problems
1006	67104	Good	CARD	REHAB	ORTHO	Heart Rehab, Cardiologist, Orthopedic Surgery, Dentist
1007	67104	Good	CARD	REHAB	ORTHO	Heart Rehabilitation, Cardiology, Orthopedic Surgery
1042	67070	Fair	CARD	SURG		Cardiac surgery
1011	67061	Good	CARD	SURG		Heart Surgery
1027	67104	Good	CARD			Cardiac care
1011	67104	Fair	CARD			cardiologist
1074	67104	Very Good	CARD			Cardiology treatment
1069	67104	Good	CARD			Heart
1018	67104	Very Good	CARD			Heart Disease issues
1063	67104	Good	CHIRO	OPT	DENT	Chiropractic care, vision care, dental care.
1091	67104	Fair	CHIRO	SPEC		chiropractor and specialists
1062	67104	Good	DENT	DERM	OBG	I go out of town to see the dentist, dermatologist, gynecologist, and to get mammograms.
1003	67104	Good	DENT	MAMM	OPHT	Dental, Mamogram, eye surgery, orthopedics, neurology, dermatology, allergist
1002	67104	Good	DENT	MAMM	SURG	Dental, Mamography, Surgery, Dermatologist, allergist
1016	67065	Fair	DENT	NH	SPEC	Dental, nursing home, specialist
1010	67061	Good	DENT	OPT	CARD	dental, vision, cardiac specialist
1066	67104	Fair	DENT	PRIM		dentist, primary care,
1005	67104	Fair	DENT			Dental
1115	67138	Good	DENT			dental
1013	67065	Very Good	DENT			Dentist
1013	67104	Good	DERM	CANC	SURG	Skin cancer surgery
1050	67104	Very Good	DERM	CANC		Skin cancer treatments
1076	67070	Good	DERM	MAMM	ORTHO	Dermatologist, mammagrams, orthopedic.
1097	67070	Fair	DERM	ORTHO	SURG	DERMATOLOGY, hand surgeon, ortho
1096	67070	Good	DERM	UROL	NEPH	Dermatology, Urologist, Nephrology, Dentist and Eye Doctor
1053	67070	Good	DERM			Dermatology appt.
1095	67104	Good	DIAB			diabetes
1009	67061	Good	DIAL	WOUN	PULM	dialysis wound care pulmonologist nephrologist Mammogram Endocrinologist
1103	67071	Good	ENDO	ENT	GAST	Endoscope, ear and allergy specialist, GI Docotor
1078	67070	Good	ENT	DENT		Ent, dentist

CHNA Community Feedback 2017						
Barber County, Kansas (Primary Service Area) N=331						
ID	Zip	Overall HC Rating	c1	c2	c3	Throughout the past two years, did you or someone you know receive healthcare services outside of our community?
1028	67104	Good	ENT			Ear, nose, throat Doctor
1029	67104	Good	FP	ACUT	SPEC	family care, acute care, specialty care
1078	67104	Good	FP	DENT	OPT	Family physician, Dentists, optometrist, Neurologists, cardiologist
1103	67104	Good	FP	OBG		Family and maternity
1004	67104	Fair	FP	PRATT	DENT	Family doctor Pratt, Dentist Pratt, Specialist Wichita
1051	67104	Fair	FP			regular check up with family physician
1121	67112	Good	GEN	COLON		After hours general health care and scheduled colonoscopy
1065	67104	Poor	GEN	IP		Visit doctor in another city. Stay in hospital in another city.
1050	67070	Fair	GEN	OPT	DENT	medical dr. appt., optometrist, dentist
1074	67070	Very Poor	GEN	SPEC		All healthcare
1082	67104	Very Good	GEN	SPEC		Anything more than a cold sends my workforce outside of Barber County. The list is just too numerous.
1003	67057	Fair	GEN	SPEC		different kinds
1037	67070	Fair	GEN	SPEC		Go out of town to other doctors
1081	67070	Very Good	GEN	SPEC		Have to go to a bigger city
1079	67070	Poor	GEN	SPEC		Mostly all except ER visit
1119	67009	Very Good	GEN	SPEC		too many to list
1025	67070	Very Good	GEN	SPEC		WERE REFERRED BY LOCAL TX TEAM
1094	67070	Good	GEN			medical
1037	67104	Very Poor	GEN			medical
1070	67104	Good	GEN			My husband was examined by an MD in another small community in Kansas while we were visiting for Thanksgiving.
1052	67104	Fair	GEN			Needed a real Doctor
1026	67070	Fair	GEN			Office Visits
1001	67104	Good	HH	DENT	SPEC	home health, dental, specialist
1119	67143	Fair	HORM	CHIRO		I go out of county to have bio identical hormone therapy prescribed. Have gone out of community to chiropractor
1019	67070	Very Good	KHH	PNEU		Kansas Heart Hospital, Pneumonia
1044	67070	Good	KHH	STFR	WESL	Heart Hospital, St Francis, Wesley- all in Wichita
1035	67070	Good	KHH			heart hospital
1075	67070	Fair	KHH			Heart hospital
1020	67070	Good	MAMM	CHIRO		Mammogram & chiropractor
1071	67104	Very Good	MAMM	DENT		Mammogram. Dental services.
1014	67065	Poor	MAMM	GEN	DERM	Momogram, general dr. visit, skin care
1036	67104	Good	MAMM	ORTHO	DENT	Mamogram, Orthopedics (hand), Dental
1099	67104	Very Good	MAMM	PRATT		Mammogram for myself at Pratt Regional Medical Center
1072	67070	Fair	MAMM	SPEC	DIAL	mammograms, specialists, dialysis, cancer treatments
1065	67070	Good	MAMM	THYR		mammogram, thyroid
1048	67104	Good	MAMM			mammograms,
1023	67104	Very Good	MAMM			Mamogram
1008	67061	Fair	MLMH	PRATT	ANTH	MEDICINE LODGE - PRATT - ANTHONY - WICHITA
1080	67070	Fair	MLMH	TAB	CWES	Other than seeing patty in ml and Dr Patrick for tabular care we go to childrens wesley. But never get care in kiowa where we live. Never!
1012	67065	Good	NEPH	ENT		Nephrology and ear
1076	67104	Very Good	NEUR			spine epidural x2
1015	67104	Good	OBG	CARD	ORTHO	annual check up for females, some followed Dr Meador, to see specialists, heart, joints, back
1026	67104	Good	OBG	ENT	ORTH	OBGYN, ENT, Orthodontist, Dentistry
1055	67070	Good	OBG	ENT		gynecologist, ENT,
1094	67104	Good	OBG	MAMM	DERM	Gynecologist, mammogram, dermatologist, dentist
1083	67070	Good	OBG	OPT	CHIRO	OBGYN, optometrist, chiropractor, dentist, specialists
1066	67070	Good	OBG	OPT	DENT	GYNO, Optometry, Dental
1092	67104	Good	OBG	ORTHO	CARD	Obstetrics, orthopedics, cardiac
1104	67104	Good	OBG	PRATT		Birth of Children in Pratt
1106	67104	Very Good	OBG	PRATT		Had baby in Pratt
1010	67104	Fair	OBG	PRIM		Womens health and primary care
1040	67070	Good	OBG	PULM		gynecology and pulmonology
1021	67104	Very Good	OBG	RAD	MAMM	OB/GYN, bone scan, mamogram, dental
1084	67104	Good	OBG			Baby
1057	67070	Very Good	OBG			Gynecology

CHNA Community Feedback 2017						
Barber County, Kansas (Primary Service Area) N=331						
ID	Zip	Overall HC Rating	c1	c2	c3	Throughout the past two years, did you or someone you know receive healthcare services outside of our community?
1102	67104	Fair	OBG			OB
1090	67104	Good	OBG			Ob Gyn
1005	67057	Very Good	OBG			OBGYN
1098	67070	Very Good	OBG			OBGYN

Community Health Needs Assessment 2017 - Barber County, KS (Primary Service Area)

Let Your Voice Be Heard!

Kiowa District Healthcare, Medicine Lodge Memorial Hospital and the Barber County Health Department are working in collaboration to complete a comprehensive Community Health Needs Assessment (CHNA). Your feedback from this survey will help us identify current health issues in our community. While your participation is voluntary, we would greatly appreciate your input. All answers will be kept confidential.

All Community Health Needs Assessment 2017 feedback is due by Tuesday, February 28. Thank you for your participation.

Community Health Needs Assessment 2017 - Barber County, KS (Primary Service Area)

Part I: Introduction

1. In your opinion, how would you rate the "Overall Quality" of healthcare delivery in our community?

	Very Good	Good	Fair	Poor	Very Poor
Quality of Healthcare Delivery:	<input type="radio"/>	<input type="radio"/>	<input type="radio"/>	<input type="radio"/>	<input type="radio"/>

Community Health Needs Assessment 2017 - Barber County, KS (Primary Service Area)

2. What are our "local healthcare providers and agencies" currently doing "Very Well" to deliver quality healthcare services to our community? (Please be specific.)

Community Health Needs Assessment 2017 - Barber County, KS (Primary Service Area)

3. What are our "local healthcare providers and agencies" currently doing that needs to be improved and/or changed in our community? (Please be specific.)

Community Health Needs Assessment 2017 - Barber County, KS (Primary Service Area)

4. Are any of the health needs listed below an "Ongoing Problem" in our community?

	Not a Problem Anymore	Somewhat of a Problem	Major Problem
Drug Abuse	<input type="radio"/>	<input type="radio"/>	<input type="radio"/>
Mental Health (Access, Diagnosis, Placement)	<input type="radio"/>	<input type="radio"/>	<input type="radio"/>
Obesity (Nutrition, Fitness)	<input type="radio"/>	<input type="radio"/>	<input type="radio"/>
Alcohol Abuse	<input type="radio"/>	<input type="radio"/>	<input type="radio"/>
Healthcare Transportation	<input type="radio"/>	<input type="radio"/>	<input type="radio"/>
Tobacco	<input type="radio"/>	<input type="radio"/>	<input type="radio"/>
Affordable Insurance Options	<input type="radio"/>	<input type="radio"/>	<input type="radio"/>
Child Care Options	<input type="radio"/>	<input type="radio"/>	<input type="radio"/>
Affordable Pharmaceuticals	<input type="radio"/>	<input type="radio"/>	<input type="radio"/>
Home Health Services	<input type="radio"/>	<input type="radio"/>	<input type="radio"/>
Immunizations for Children	<input type="radio"/>	<input type="radio"/>	<input type="radio"/>
Assisted Living	<input type="radio"/>	<input type="radio"/>	<input type="radio"/>
Unsafe Homes	<input type="radio"/>	<input type="radio"/>	<input type="radio"/>

Other (please specify):

Community Health Needs Assessment 2017 - Barber County, KS (Primary Service Area)

5. Which health needs listed below are most pressing today for improvement in our community? (Please select top three needs.)

- | | |
|---|---|
| <input type="checkbox"/> Drug Abuse | <input type="checkbox"/> Affordable Insurance Options |
| <input type="checkbox"/> Mental Health (Access, Diagnosis, Placement) | <input type="checkbox"/> Child Care Options |
| <input type="checkbox"/> Obesity (Nutrition, Fitness) | <input type="checkbox"/> Affordable Pharmaceuticals |
| <input type="checkbox"/> Alcohol Abuse | <input type="checkbox"/> Immunizations for Children |
| <input type="checkbox"/> Healthcare Transportation | <input type="checkbox"/> Assisted Living |
| <input type="checkbox"/> Tobacco | <input type="checkbox"/> Unsafe Homes |
| <input type="checkbox"/> Other (please specify): | |

Community Health Needs Assessment 2017 - Barber County, KS (Primary Service Area)

6. How would our community residents rate each of the following services? (Please select one box per row.)

	Very Good	Good	Fair	Poor	Very Poor	N/A
Ambulance Services	<input type="radio"/>	<input type="radio"/>	<input type="radio"/>	<input type="radio"/>	<input type="radio"/>	<input type="radio"/>
Assisted Living	<input type="radio"/>	<input type="radio"/>	<input type="radio"/>	<input type="radio"/>	<input type="radio"/>	<input type="radio"/>
Child Care	<input type="radio"/>	<input type="radio"/>	<input type="radio"/>	<input type="radio"/>	<input type="radio"/>	<input type="radio"/>
Chiropractors	<input type="radio"/>	<input type="radio"/>	<input type="radio"/>	<input type="radio"/>	<input type="radio"/>	<input type="radio"/>
Early Detection	<input type="radio"/>	<input type="radio"/>	<input type="radio"/>	<input type="radio"/>	<input type="radio"/>	<input type="radio"/>
Emergency Room	<input type="radio"/>	<input type="radio"/>	<input type="radio"/>	<input type="radio"/>	<input type="radio"/>	<input type="radio"/>
Environmental	<input type="radio"/>	<input type="radio"/>	<input type="radio"/>	<input type="radio"/>	<input type="radio"/>	<input type="radio"/>
Eye Doctor / Optometrist	<input type="radio"/>	<input type="radio"/>	<input type="radio"/>	<input type="radio"/>	<input type="radio"/>	<input type="radio"/>
Family Planning Services	<input type="radio"/>	<input type="radio"/>	<input type="radio"/>	<input type="radio"/>	<input type="radio"/>	<input type="radio"/>
Home Health	<input type="radio"/>	<input type="radio"/>	<input type="radio"/>	<input type="radio"/>	<input type="radio"/>	<input type="radio"/>
Hospice	<input type="radio"/>	<input type="radio"/>	<input type="radio"/>	<input type="radio"/>	<input type="radio"/>	<input type="radio"/>
Immunizations	<input type="radio"/>	<input type="radio"/>	<input type="radio"/>	<input type="radio"/>	<input type="radio"/>	<input type="radio"/>

Community Health Needs Assessment 2017 - Barber County, KS (Primary Service Area)

7. How would our community residents rate each of the following? (Please select one box per row.)

	Very Good	Good	Fair	Poor	Very Poor	N/A
Inpatient Services	<input type="radio"/>	<input type="radio"/>	<input type="radio"/>	<input type="radio"/>	<input type="radio"/>	<input type="radio"/>
Mental Health Services	<input type="radio"/>	<input type="radio"/>	<input type="radio"/>	<input type="radio"/>	<input type="radio"/>	<input type="radio"/>
Nursing Home	<input type="radio"/>	<input type="radio"/>	<input type="radio"/>	<input type="radio"/>	<input type="radio"/>	<input type="radio"/>
Outpatient Services	<input type="radio"/>	<input type="radio"/>	<input type="radio"/>	<input type="radio"/>	<input type="radio"/>	<input type="radio"/>
Parenting	<input type="radio"/>	<input type="radio"/>	<input type="radio"/>	<input type="radio"/>	<input type="radio"/>	<input type="radio"/>
Pharmacy	<input type="radio"/>	<input type="radio"/>	<input type="radio"/>	<input type="radio"/>	<input type="radio"/>	<input type="radio"/>
Primary Care	<input type="radio"/>	<input type="radio"/>	<input type="radio"/>	<input type="radio"/>	<input type="radio"/>	<input type="radio"/>
Public Health Department	<input type="radio"/>	<input type="radio"/>	<input type="radio"/>	<input type="radio"/>	<input type="radio"/>	<input type="radio"/>
School Nurse	<input type="radio"/>	<input type="radio"/>	<input type="radio"/>	<input type="radio"/>	<input type="radio"/>	<input type="radio"/>
Specialists	<input type="radio"/>	<input type="radio"/>	<input type="radio"/>	<input type="radio"/>	<input type="radio"/>	<input type="radio"/>
WIC (women infants children)	<input type="radio"/>	<input type="radio"/>	<input type="radio"/>	<input type="radio"/>	<input type="radio"/>	<input type="radio"/>

Community Health Needs Assessment 2017 - Barber County, KS (Primary Service Area)

8. Throughout the past two years, did you or someone you know receive healthcare services outside of our community?

- ☐ Yes
 ☐ Don't know
 ☐ No

If yes, please specify the healthcare services received:

Community Health Needs Assessment 2017 - Barber County, KS (Primary Service Area)

9. Are there any other health needs listed below that need to be discussed in detail at our upcoming CHNA Town Hall meeting? (Please select all that need to be on our agenda.)

- | | | |
|--|--|--|
| <input type="checkbox"/> Abuse / Violence | <input type="checkbox"/> Indoor Air | <input type="checkbox"/> Sexually Transmitted Diseases |
| <input type="checkbox"/> Alcohol | <input type="checkbox"/> Lead Exposure | <input type="checkbox"/> Suicide |
| <input type="checkbox"/> Assisted Living | <input type="checkbox"/> Mental Illness | <input type="checkbox"/> Teen Pregnancy |
| <input type="checkbox"/> Cancer | <input type="checkbox"/> Nutrition | <input type="checkbox"/> Tobacco Use |
| <input type="checkbox"/> Diabetes | <input type="checkbox"/> Obesity | <input type="checkbox"/> Unsafe Housing |
| <input type="checkbox"/> Drugs / Substance Abuse | <input type="checkbox"/> Physical Exercise | <input type="checkbox"/> Vaccinations |
| <input type="checkbox"/> Family Planning | <input type="checkbox"/> Poverty | <input type="checkbox"/> Well Water |
| <input type="checkbox"/> Heart Disease | <input type="checkbox"/> Respiratory Disease | <input type="checkbox"/> Wellness Education |
| <input type="checkbox"/> Other (please specify): | | |

Community Health Needs Assessment 2017 - Barber County, KS (Primary Service Area)

10. Regarding your personal health practices, are you...

	Yes	No	Don't Know
Eating right (5 servings of fruits and vegetables)	<input type="radio"/>	<input type="radio"/>	<input type="radio"/>
Using tobacco products weekly	<input type="radio"/>	<input type="radio"/>	<input type="radio"/>
Exercising 2-3 time weekly	<input type="radio"/>	<input type="radio"/>	<input type="radio"/>
Consuming alcohol (more than once daily)	<input type="radio"/>	<input type="radio"/>	<input type="radio"/>
Living in a home with unsafe water, air, sewer or other problems	<input type="radio"/>	<input type="radio"/>	<input type="radio"/>

Community Health Needs Assessment 2017 - Barber County, KS (Primary Service Area)

11. What is your home zip code?

Community Health Needs Assessment 2017 - Barber County, KS (Primary Service Area)

Demographics

12. For reporting purposes, are you involved in or are you a ...? (Please select all that apply).

- | | | |
|--|---|---|
| <input type="checkbox"/> Board Member (Hospital / Public Health) | <input type="checkbox"/> Elected Official (City / County) | <input type="checkbox"/> Other Health Professional |
| <input type="checkbox"/> Business / Merchant | <input type="checkbox"/> EMS / Emergency | <input type="checkbox"/> Parent / Caregiver |
| <input type="checkbox"/> Case Manager / Discharge Planner | <input type="checkbox"/> Farmer / Rancher | <input type="checkbox"/> Pharmacy |
| <input type="checkbox"/> Civic Club / Chamber | <input type="checkbox"/> Health Department | <input type="checkbox"/> Physician (MD / DO) |
| <input type="checkbox"/> Charitable Foundation | <input type="checkbox"/> Hospital | <input type="checkbox"/> Physician Clinic (MD / DO / PA / NP) |
| <input type="checkbox"/> Clergy / Congregational Leader | <input type="checkbox"/> Housing / Builder | <input type="checkbox"/> Media (Paper, TV, Radio) |
| <input type="checkbox"/> College / University | <input type="checkbox"/> Insurance | <input type="checkbox"/> Senior Care / Nursing Home |
| <input type="checkbox"/> Consumer Advocate | <input type="checkbox"/> Labor | <input type="checkbox"/> Social Worker |
| <input type="checkbox"/> Consumers of Healthcare | <input type="checkbox"/> Law Enforcement | <input type="checkbox"/> Veteran |
| <input type="checkbox"/> Dentist | <input type="checkbox"/> Low Income / Free Clinics | <input type="checkbox"/> Welfare / Social Service |
| <input type="checkbox"/> Economic Development | <input type="checkbox"/> Mental Health | |
| <input type="checkbox"/> Education Official / Teacher | <input type="checkbox"/> Nursing | |
| <input type="checkbox"/> Other (please specify) | | |

Community Health Needs Assessment 2017 - Barber County, KS (Primary Service Area)

You have just completed the Community Health Needs Assessment 2017 survey. By selecting "Done", you are submitting your responses and giving others an opportunity to complete the same survey. The survey will now loop back to the beginning. Thank you for your participation.

CHNA Report Contact :



Vince Vandehaar, MBA

VVV Consultants LLC

***Adjunct Professor / Professional Healthcare
Marketing and Strategic Planning Consulting
Services***

***601 N Mahaffie, Olathe, KS 66061
(913) 302-7264 (C)
VVV@VandehaarMarketing.com***

LinkedIn: [vandehaar](#)

Website: [VandehaarMarketing.com](#)