



Pottawatomie County KS

Community Health Needs Assessment



February 2013

**VVW Research & Development INC.
Olathe, KS**

Community Health Needs Assessment

Table of Contents

I **Executive Summary**

II **Methodology**

- a) CHNA Scope & Purpose
- b) Local Collaborating CHNA parties...the identity of any and all organizations with which the organization collaborated and third parties that engaged to assist with the CHNA.
- c) CHNA & Town Hall Research Process... a description of the process & methods used to conduct the CHNA, a description of how the organization considered the input of persons representing the community, and an explanation of the process/criteria used in prioritizing such needs.
- d) Community Profile (Demographics/Economics)... a description of the community served by the facility and how the community was determined. TABS 1-2

III **Community Health Status**

- a) Town Hall CHNA Findings: Areas of Strengths & Areas to Change and/or Improve.”
- b) County Health Area of Future Focus... a prioritized description of all of the community needs identified by the CHNA.
- c) Historical Health Statistics – TAB 3-10

IV **Inventory of Existing County Health Resources**

- a) Physician Manpower, Health Service Offerings, Detail Inventory of HC providers and Detail Listing local DOH... a description of the existing health care facilities and other resources within the community available to meet the needs identified through the CHNA.

V **Detail Exhibits**

- a) Patient Origin & Access to Care
- b) Town Hall Attendees, Notes & Feedback... who those persons are (with qualifications)
- c) Public Notice & News
- d) Primary Research Detail *Shaded lines note IRS requirements*

I. Executive Summary

[VVV Research & Development INC]

I. Executive Summary

The following report is the Community Needs Health Assessment for **Pottawatomie County KS –Community HealthCare System (CHCS) Primary Service Area (PSA)**. Creating healthy communities requires a high level of mutual understanding and collaboration with community individuals and partner groups. The development of this assessment brings together community health leaders and providers along with local residents to research, prioritize county health needs and to document community health delivery successes. This health assessment will serve as the foundation for community health improvement efforts for next three years. The Patient Protection and Affordable Care Act (ACA) requires a non-profit hospitals to conduct a community health needs assessment (CHNA) every three years and adopt an implementation strategy to meet the needs identified by the CHNA.

The 2012 Community Health Needs Assessment (CHNA) brings together a variety of health status information. This assessment was coordinated and produced by VVV Research & Development INC from Olathe, KS under the direction of Vince Vandehaar, MBA. Important CHNA benefits for the sponsoring local hospital and health department, as well as for the community, are as follows: 1) Increases knowledge of community health needs and resources, 2) Creates a common understanding of the priorities of the community's health needs, 3) Enhances relationships and mutual understanding between and among stakeholders, 4) Provides a basis upon which community stakeholders can make decisions about how they can contribute to improving the health of the community, 5) Provides rationale for current and potential funders to support efforts to improve the health of the community, 6) Creates opportunities for collaboration in delivery of services to the community and 7) Provides guidance to the hospital & local health department for how it can align its services and community benefit programs to best meet needs.

Listed below are general CHNA research conclusions, followed by community health priorities:

Key CHNA Conclusions (Secondary Research)

- **HEALTH RANKINGS:** According to 2012 County Health Rankings study, Pottawatomie county highest area ranking (of 105 counties) was in Mortality at 9th next morbidity at 15th. Health Behaviors – Tobacco Use, Diet/Exercise, Alcohol Use and Sexual Activity ranked 30th with Social Economic factors ranking in at 12th. Clinical care which includes the uninsured and the # of primary care physicians ranked #21, with Physical Environments having the lowest ranking of 89th. *Overall Pottawatomie County ranked 6th out of the 100 counties with Health Outcomes*
- **TAB 1:** Pottawatomie County has a higher percentage (31.7%) of people over 65 living alone. Voter turnout for county is slightly lower (reflecting community involvement) than CAH norm. Pottawatomie has a higher percentage (71.5%) of people living 200% above poverty level.
- **TAB 2:** The percentage of unemployed is 5.3%. The foreclosure rate and percentage of households with public assistance are somewhat lower than CAH norm.
- **TAB 3:** Pottawatomie has a high percentage of high school and college graduates. They also have 19.5% percentage of all students eligible for free lunch program.

- TAB 4: Pottawatomie has a high percentage (86.4%) of mothers who initiate breastfeeding. They have a somewhat lower percentage (9.5%) of mothers who smoke anytime during pregnancy.
- TAB 5: Preventable hospital stays is lower for Pottawatomie. The ratio of population to primary care physicians is good (1 PC for every 1236 people) compared to CAH norm.
- TAB 6: Financially the county has increased spending on developmental disability, temporary assistance for families, energy assistance and food assistance.
- TAB 7: Pottawatomie has a higher percentage (31%) of adults who are obese. Adult smoking is slightly higher (19%) than CAH norm.
- TAB 8: Community HealthCare System charity care is rising over last 3 years, with county uninsured at 12%.
- TAB 9: Heart disease is the major cause of death in Pottawatomie County.
- TAB 10: Mammography screening is fairly low (64%) compared to CAH norm, however Diabetic screening is occurring 87% compared to CAH norm of 82%.

Ranking of Community Health Priorities – Town Hall CHCS Onaga PSA:

Pottawatomie County, KS Town Hall Community Health Needs N=29			
#	TOPICS	Votes	%
1	Mental Health Counseling Services	11	16.4%
2	Home Care Services (Over 65)	7	10.4%
3	Senior Living (Assisted Living / Nursing Home)	6	9.0%
4	Charity Care too high (Uninsured)	6	9.0%
5	Economic Development	6	9.0%
6	Access to Specialists	4	6.0%
7	Growing Food Assistance	4	6.0%
8	Securing Funding Resources - Hospital Facility Repair/Replacement	4	6.0%
9	Immunization (Infant)	4	6.0%
10	School Nursing / Screenings (Lack of Funds)	4	6.0%
11	Child Care services	3	4.5%
12	Low Weight Babies	2	3.0%
13	Suicide	2	3.0%
14	Unemployment/Underemployment	2	3.0%
<p>Note: Shaded areas documented above denote a general economic theme, therefore it is suggested that these four areas be classified together. In addition, it is suggested <upon further review of primary data> that the following items be added to county health priorities (Note: Items scored significantly higher % then CAH norms): A) Family Planning services (8.5% higher), B) Chiropractic services (9.2%), C) Hospice (5.0%) and D) Wellness Education (1.1%).</p>			

II. Methodology

[VVV Research & Development INC]

II. Methodology

a. CHNA Scope and Purpose

The new federal Patient Protection and Affordable Care Act requires that each registered 501(c)3 hospital conduct a Community Health Needs Assessment (CHNA) at least once every three years and adopt a strategy to meet community health needs. Any hospital who has filed a 990 is required to conduct a CHNA. IRS Notice 2011-52 was released in late fall of 2011 to give notice and request comments.

JOB #1: Meet/Report IRS 990 Required Documentation

1. a description of the community served by the facility and how the community was determined;
2. a description of the process and methods used to conduct the CHNA;
3. the identity of any and all organizations with which the organization collaborated and third parties that it engaged to assist with the CHNA;
4. a description of how the organization considered the input of persons representing the community (*e.g., through meetings, focus groups, interviews, etc.*), who those persons are, and their qualifications;
5. a prioritized description of all of the community needs identified by the CHNA and an explanation of the process and criteria used in prioritizing such needs; and
6. a description of the existing health care facilities and other resources within the community available to meet the needs identified through the CHNA.

Section 501(r) provides that a CHNA must take into account input from persons who represent the broad interests of the community served by the hospital facility, including individuals with special knowledge of or expertise in public health. Under the Notice, the persons consulted must also include: Government agencies with current information relevant to the health needs of the community and representatives or members in the community that are medically underserved, low-income, minority populations, and populations with chronic disease needs. In addition, a hospital organization may seek input from other individuals and organizations located in or serving the hospital facility's defined community (e.g., health care consumer advocates, academic experts, private businesses, health insurance and managed care organizations, etc.).

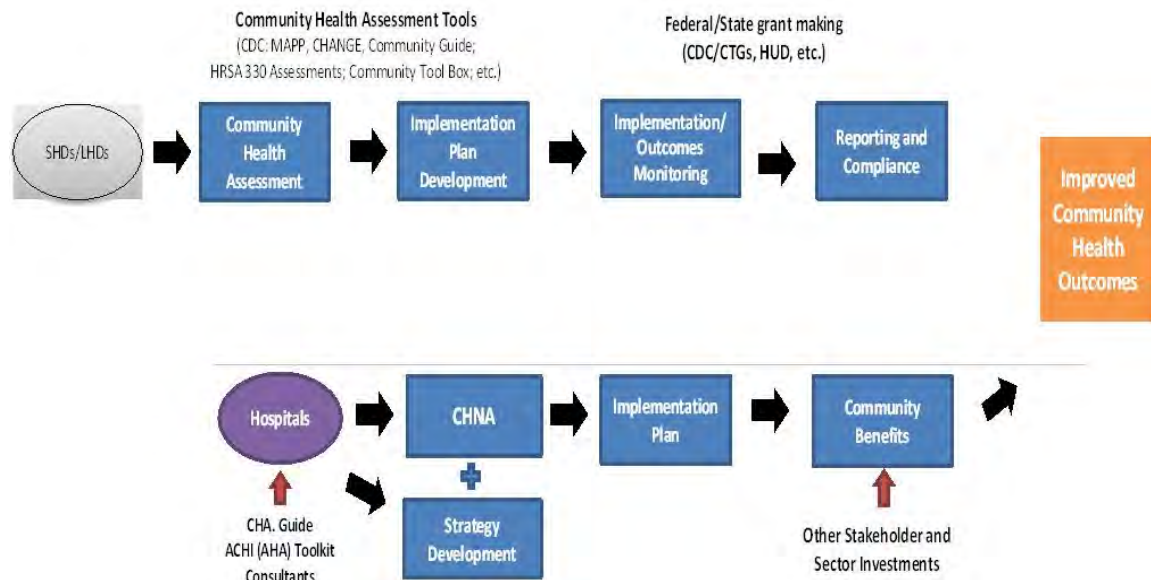
JOB #2: Making a CHNA Widely Available to the Public

The Notice provides that a CHNA will be considered to be "conducted" in the taxable year that the written report of the CHNA findings is made widely available to the public. The Notice also indicates that the IRS intends to pattern its rules for **making a CHNA "widely available to the public"** after the rules currently in effect for Form 990. Accordingly, an organization would make a **facility's written report** widely available by posting the final report on its website either in the form of (1) the report itself, in a readily accessible format, or (2) a link to another organization's website, along with instructions for accessing the report on that website. *The Notice clarifies that an organization must post the CHNA for each facility until the date on which its subsequent CHNA for that facility is posted.*

JOB #3: Adopt an Implementation Strategy by Hospital

Section 501(r) requires a hospital organization to adopt an implementation strategy to meet the needs identified through each CHNA. The Notice defines an "implementation strategy" as a written plan that addresses each of the needs identified in a CHNA by either (1) describing how the facility plans to meet the health need, or (2) identifying the health need as one that the facility does not intend to meet and explaining why the facility does not intend to meet it. A hospital organization may develop an implementation strategy in collaboration with other organizations, which must be identified in the implementation strategy. As with the CHNA, a hospital organization that operates multiple hospital facilities must have a separate written implementation strategy for each of its facilities.

Great emphasis has been given to work hand-in-hand with leaders from both hospitals and the local county health department. A common approach has been adopted to create the CHNA, leading to aligned implementation plans and community reporting.



IRS Notice 2011-52 Overview

Applicability of CHNA Requirements to “Hospital Organizations”

The CHNA requirements apply to “**hospital organizations**,” which are defined in Section 501(r) to include (1) organizations that operate one or more state-licensed hospital facilities, and (2) any other organization that the Treasury Secretary determines is providing hospital care as its principal function or basis for exemption.

Under Section 501(r), a hospital organization is required to conduct a CHNA for each of its hospital facilities once every three taxable years. *The CHNA must take into account input from persons representing the community served by the hospital facility and must be made widely available to the public.* **The CHNA requirements are effective for taxable years beginning after March 23, 2012.** As a result, a hospital organization with a June 30 fiscal year end must conduct an initial CHNA for each of its hospital facilities by June 30, 2013, either during the fiscal year ending June 30, 2013 or during either of the two previous fiscal years.

Determining the Community Served

A CHNA must identify and assess the health needs of the **community served** by the hospital facility. Although the Notice suggests that geographic location should be the primary basis for defining the community served, it provides that the organization may also take into account the target populations served by the facility (e.g., children, women, or the aged) and/or the facility’s principal functions (e.g., specialty area or targeted disease). *A hospital organization, however, will not be permitted to define the community served in a way that would effectively circumvent the CHNA requirements (e.g., by excluding medically underserved populations, low-income persons, minority groups, or those with chronic disease needs).*

Persons Representing the Community Served

Section 501(r) provides that a CHNA must take into account input from **persons who represent the broad interests of the community** served by the hospital facility, including individuals with special knowledge of or expertise in public health. Under the Notice, the persons consulted must also include: (1) government agencies with current information relevant to the health needs of the community and (2) representatives or members of medically underserved, low-income, and minority populations, and populations with chronic disease needs, in the community. In addition, a hospital organization may seek input from other individuals and organizations located in or serving the hospital facility’s defined community (e.g., health care consumer advocates, academic experts, private businesses, health insurance and managed care organizations, etc.).

Required Documentation The Notice provides that a hospital organization will be required to separately document the CHNA for each of its hospital facilities in a **written report** that includes the following information: 1) a description of the community served by the facility and how the community was determined; 2) a description of the process and methods used to conduct the CHNA; 3) the identity of any and all organizations with which the organization collaborated and third parties that it engaged to assist with the CHNA; 4) a description of how the organization considered the input of persons representing the community (e.g., through meetings, focus groups, interviews, etc.), who those persons are, and their qualifications; 5) a prioritized description of all of the community needs identified by the CHNA and an explanation of the process and criteria used in prioritizing such needs; and 6) a description of the existing health care facilities and other resources within the community available to meet the needs identified through the CHNA.

Making a CHNA Widely Available to the Public

The Notice provides that a CHNA will be considered to be **“conducted”** in the taxable year that the written report of the CHNA findings is made **widely available to the public**. The Notice also indicates that the IRS intends to pattern its rules for making a CHNA “widely available to the public” after the rules currently in effect for Forms 990. *Accordingly, an organization would make a facility’s written report widely available by posting on its website either (1) the report itself, in a readily accessible format, or (2) a link to another organization’s website, along with instructions for accessing the report on that website. The Notice clarifies that an organization must post the CHNA for each facility until the date on which its subsequent CHNA for that facility is posted.*

How and When to Adopt an Implementation Strategy

Section 501(r) requires a hospital organization to adopt an implementation strategy to meet the needs identified through each CHNA. **The Notice defines an “implementation strategy” as a written plan that addresses each of the needs identified in a CHNA by either (1) describing how the facility plans to meet the health need, or (2) identifying the health need as one that the facility does not intend to meet and explaining why the facility does not intend to meet it.** A hospital organization may develop an implementation strategy in collaboration with other organizations, which must be identified in the implementation strategy. As with the CHNA, a hospital organization that operates multiple hospital facilities must have a separate written implementation strategy for each of its facilities.

Under the Notice, an implementation strategy is considered to be “adopted” on the date the strategy is approved by the organization’s board of directors or by a committee of the board or other parties legally authorized by the board to act on its behalf. Further, the formal adoption of the implementation strategy must occur by the end of the same taxable year in which the written report of the CHNA findings was made available to the public. For hospital organizations with a June 30 fiscal year end, that effectively means that the organization must complete and appropriately post its first CHNA no later than its fiscal year ending June 30, 2013, and formally adopt a related implementation strategy by the end of the same tax year. *This final requirement may come as a surprise to many charitable hospitals, considering Section 501(r) contains no deadline for the adoption of the implementation strategy.*

II. Methodology

b. Collaborating CHNA Parties

Working together to improve community health takes collaboration. Listed below is an in depth profile of hospital and health department providers :

Community Health Care System – Onaga Profile

120 W. 8th St.

Onaga, Kansas 66521

Greg Unruh, President & CEO

With more than 450 associates at seven locations serving a 10,000-square-mile service area, Community HealthCare System (CHCS) is a first-class, nonprofit health care system with a longstanding tradition of providing compassionate, high-quality care to the rural communities of northeast Kansas.

Our History

Dr. John Koentz, who obtained his medical training in Amsterdam, Netherlands, homesteaded near Onaga in 1859 and established his medical practice. From these "horse and buggy" beginnings, the residents of Onaga and the surrounding communities of Havensville, Soldier, Circleville, Holton, Corning, Centralia, Emmett and Westmoreland have had continuous, professional medical care. In 1943 the Charles Day 3-story victorian residence was converted into a hospital that offered inpatient care for adults and pediatrics, emergency services, obstetrical and surgical services.

In 1955, the communities of Emmett, Havensville, Onaga and Wheaton came together to create Community Hospital District 1 and built a new hospital for this area in northeast Kansas. The hospital opened its doors in 1957 under the leadership of C. C. Stauffer and Roy Tessendorf. It provided the same services as the initial hospital with Dr. Fleckenstein and Dr. Eugene Walsh as the medical staff. Dr. Tom Walsh joined them in July 1975.

The decades of the '80s and '90s saw tremendous growth, both in program and service development as well as geographical expansion. As the organization expanded into other communities, Community Hospital District 1 changed its name to the more inclusive Community HealthCare System (CHCS).

CHCS has always been centered on serving rural citizens. This focus was the guiding principle behind its expansion: recognizing the communities of its existing patient base and establishing family practice medical clinics in those communities to better serve them. By the beginning of 2000, CHCS was directly serving the communities of Centralia, Frankfort, Holton, Onaga and St. Marys. It developed a continuum of care services meeting the needs of patients of all ages with inpatient and outpatient services, skilled services, wellness services and programming, home-based care, senior services, expanded lab, imaging, and rehabilitation services.

Current

CHCS has added two additional locations in the past two years, taking health and wellness services to the communities of Corning and Westmoreland.

The health system covers 10,000 square miles, with family practice as the center point of all our care, as well as an offering of hospital outpatient services. It employs 10 family practice physicians, 1 psychiatrist and 10 advanced practitioners. It is an award-winning health care system and an economic contributor for a number of communities in northeastern Kansas.

CHCS has always had its roots in caring for rural communities. It finds its strength in the relationships of our patients, communities, physicians and advanced practitioners in carrying out its mission: *To enrich the health and lives of the people we serve.*

Our Mission

The Mission of Community HealthCare System, Inc. is to ***Enrich the Health and Lives of the People We Serve.***

We believe, in everything we do, our responsibility is to add value and purpose as we ***enrich*** the experience of our patients, our long-term care residents and every family. Most important, our single and only purpose for existence is to ***serve*** the people we have the privilege of caring for.

Our Vision

- *To be the trusted resource for quality, innovative, personalized care and the integrated health care system of choice.*
- *To allocate resources in response to the unique characteristics of the communities we serve.*
- *Provide an outstanding environment for our associates.*

Our Values: True to our heritage, we hold the following values.

- Integrity.
- Excellence.
- Respect.
- Compassion.
- Commitment.
- Innovation.
- Loyalty.
- Collegiality.
- Kindness.
- Citizenship.
- Accountability.
- Home care
 - Durable/home medical equipment
- Laboratory
- Lifecare wellness centers
 - Fitness classes
- Medical/surgical care
- Men's health
- Nutrition services
 - Weight management (LEAN program)
- Podiatry
- Rehabilitation services
 - Occupational therapy
 - Physical therapy
 - Speech therapy

CHCS Services

- Audiology
- Behavioral health care
- Cardiology
- Childbirth
- Diabetic care
- Diagnostic imaging
 - Imaging technology
- Ear, nose and throat
- Emergency department
 - Emergency transport
- Family practice
- Senior care
 - Eastridge
 - Redbud Plaza Assisted Living
 - St. Mary's Manor
- Surgery
- Swing bed program
- Women's health
- Wound care
- Youth services

Wamego City Hospital Profile

711 Genn Drive
Wamego, KS 66547

Shannan Flach, CEO

Serving the community since 1915, Wamego City Hospital is a 25-bed, critical access hospital. Access to quality healthcare is essential, and Wamego City Hospital provides that care for Pottawatomie and surrounding counties. With highly qualified physicians' on-call, our Emergency Department provides care 24 hours a day/7 days a week. Housing its own laboratory, radiology, physical and occupational therapy departments along with CT and MRI services, Wamego City Hospital can offer a full range of services with one visit.

Mission Statement:

Wamego City Hospital is committed to the delivery of high quality healthcare to those we serve in an environment of compassion, integrity and fiscal responsibility.

Our Core Values:

Vision: As we look to the future, we enhance the use of our knowledge, talent, skills, and resources to provide superior niche care in our rural community.

Integrity: It is our responsibility to maintain the highest standards of behavior and competence to encompass honesty, ethics, and to do the right things for the right reasons.

Superior Service: We are committed to providing excellent service and compassionate care, while respecting the human dignity and worth of each individual.

Innovation: We strive to explore new approaches to improve the quality of life for all persons.

Teamwork: In an environment of respect and cooperation, we are committed to work together to promote a relationship between those we serve and those providing service.

Stewardship: We are dedicated to responsible stewardship of Wamego City Hospital's assets and financial resources for the benefit of the community through service and education.

Services

- Heritage program for senior adults
- Laboratory
- Occupational therapy
- Outpatient specialty clinic
- Physical therapy
- Radiology
- Speech therapy
- Surgical services
- Swing bed program
- Wamego family health care

II. Methodology

b. Collaborating CHNA Parties (continue)

Pottawatomie County Health Department Profile

320 E Main Po Box 310
Westmoreland, KS 66549
Health Director – Leslie Campbell

Pottawatomie County Health Department Clinic Hours

BY APPOINTMENT:

Physicals
Preschool Screenings
Family Planning
WIC-Riley County Health Department 776-4779
M & I
Services for Children with Special Health Care Needs
HIV testing
Lead Screening under 6 years of age (High Risk)

FRIDAYS ONLY:

Immunizations
Blood Pressure - Blood Sugar - Hemoglobin (with Doctor order)
Fluoride Varnish
Well Baby Clinic, weigh & measure
Family Planning re-supply

OTHER:

Day Care Licensure
Healthy Start Home Visitor
Satellite Clinics
Toenail Clinics

Area Community Services

Manhattan

[Adult Learning Center](#)
[AIDS Resource & Eval Clinic](#)
[Area Agency on Aging](#)
[Big Lakes Development Center](#)
[Family & Social Services](#)
[Flint Hills Breadbasket](#)
[Flint Hills Legal Services](#)
[Headstart](#)
[Job Service](#)

[KAPS Advocacy & Protective Service](#)
[Manhattan Human Resources](#)
[Manhattan Public Library](#)
[Mercy Health Center](#)
[North Central Flint Hills Area Agency on Aging](#)
[Pawnee Mental Health](#)
[The Crisis Center Inc](#)
[Three Rivers Independent Living](#)
[UFM Community Learning Center](#)

Onaga

[Clothing Assistance](#)
[Community Counseling Services](#)
[Community Home Health](#)
[Conversion Place](#)

[Food Pantry](#)
[Headstart](#)
[Onaga Housing Authority](#)
[Onaga Rural Housing](#)

St George

[Food Pantry](#)

St Marys

[Adult Day Care](#)
[Food Pantry](#)
[Health Center](#)

[Housing Authority](#)
[Rural Housing](#)

Topeka

[Battered Women Task Force](#)
[Birthright](#)
[Community Resources Council](#)
[Cornerstone of Topeka](#)
[ERC Resource & Referral](#)
[Florence Crittenton Services](#)
[Housing & Credit Counsel](#)
[Ketch](#)
[Let's Help](#)
[Lifeline](#)
[National Alliance for Mentally Ill](#)

[Providence Living Center](#)
[Shawnee Health & Recovery Service](#)
[St Francis - Color Me Well](#)
[Sunflower Alcohol Safety](#)
[The Villages Inc](#)
[Topeka AIDS Project \(TAPS\)](#)
[Topeka Chamber of Commerce](#)
[Topeka Job Service Center](#)
[Topeka Literacy Council Inc](#)
[Women's Recovery Center](#)

Wamego

[Food Pantry](#)
[Health Ministry](#)
[Headstart](#)
[Lions Club](#)

[Three Rivers](#)
[Valley Vista Good Samaritan Center](#)
[Wamego City Hospital](#)
[Wamego Council of Churches](#)

Westmoreland

[Westmoreland Care Home](#)

[Westmoreland Housing Authority](#)

II. Methodology

b. Collaborating CHNA Parties (continue)

Consultant Qualifications



VVW Research & Development, Inc.

Company Profile: 601 N. Mahaffie, Olathe, KS 66061-6431 (913) 302-7264

VINCE VANDEHAAR, MBA

Principal Consultant & Owner of VVW Research & Development, Inc.

VVW Research & Development, Inc. was incorporated on May 28th 2009. With over 30 years of business & faculty experience in helping both providers, payors, and financial service firms obtain their strategic planning, research & development needs, Vince brings in-depth health industry knowledge, research aptitude, planning expertise, and energy. VVW Research & Development services are organized, formal processes of listening to the voice of the customer. Vince started his consulting business in May of 2009, after working for Saint Luke's Health System (SLHS) of Kansas City for 16 years. Note: Saint Luke's Hospital of Kansas City, SLHS's largest hospital, won the Malcolm Baldrige National Quality Award in March of 2003. The Baldrige examiners cited Vince's department as "Best Practice" in the areas of customer satisfaction, market research, and evaluation efforts (Kansas City Star 3/10/04).

VVW Research & Development, INC. (Olathe, KS) consultants have in-depth experience helping hospitals work with local Health Departments to engage community residents & leaders to identify gaps between existing health community resources & needs, and construct detailed strategies to meet those needs - while still adhering to the hospital's mission and budget. Over the past 20 years, Vandehaar has completed 8 comprehensive Baldrige aligned Community Health Needs Assessments for Saint Luke's of Kansas City System facilities (3 campuses) and was contracted to conduct 2 additional independent Dept. of Health consulting projects (prior to IRS 990 regs). Currently in 2012, VVW has 12 CHNA IRS aligned assessments underway for Kansas hospitals & Health Departments.

Vince Vandehaar, MBA is actively involved in the Kansas City community. He is a member the Greater Kansas City Employee Benefits Association, the Society for Healthcare Strategy & Market Development, the American Marketing Association Kansas City Chapter, and Co-Chair of the AMA Kansas City Healthcare Special Interest Group. In addition to these roles, from 2000 to 2008, Vince served as the state chairman for MHA's Data Committee and was a member of KHA's Data Taskforce.

Collaborating Consultants

Amanda Burian - VVW Research & Development, Inc.
Lead Project Coordinator & Planning Analyst

II. Methodology

c. CHNA & Town Hall Research Process

Our Community Health Needs Assessment process began in the spring of 2012. At that time a joint inquiry by Community HealthCare System Onaga requested VVV Research & Development to explore the possibility of conducting a comprehensive IRS aligned CHNA for Pottawatomie County. On March 29th of 2011 a phone conference call (hosted by CHCS) was arranged to learn more from CHCS leaders their CHNA needs and to review the possible CHNA collaborative options. VVV Research & Development INC. from Olathe, KS was asked to facilitate this discussion with the following agenda: VVV Research CHNA experiences, review CHNA requirements (regulations), discuss CHNA steps/options to meet IRS requirements, and to determine next steps.

VVV CHNA Deliverables:

- Confirm Community HealthCare System service area. (See below patient origin information to meet 75% IRS guideline for primary care.)

CHCS	YR08	YR09	YR10
Total Clinic Visits	43894	46002	48084
	72.8%	74.4%	76.3%
Primary Z=16	31975	34245	36695

Market Historical IP volumes		PO101E	
KHA CHCS Onaga KS (No Newborns)			
County	2008	2009	2010
Overall	802	734	741
Pottawatomie	296	332	343
	36.9%	45.2%	46.3%
Jackson	224	214	187
	27.9%	29.2%	25.2%

- Uncover/Document Basic Secondary Research – Health of County. Organized by 10 TABS.
- Conduct Town Hall Meeting to discuss Secondary data and uncover/prioritize County Health Needs
- Conduct & report CHNA Primary Research (valid N) and
- Prepare & Publish IRS aligned CHNA report to meet requirements

Following is the specific Pottawatomie County KS CHNA roles and responsibility calendar of events for this project:

CHCS Onaga CHNA Timeline

VVV Research & Development INC Project Timeline & Roles 3/26/12

Date (Start-Finish)	Done	LEAD	Task
Friday 3/23/12	X	VVV	Buy Household P/S areas (CHCS) PO box addresses
Friday 3/23/12	X	VVV	Prepare Draft Paper/online CHNA survey. Send out paper file for review
EITHER TUES 3/27 2-4 pm or WED 3/28/12 8-10 am		VVV /CHCS	Hold 20min individual Kickoff Conference call (2)
Due by Friday 4/6/12 NOON. Send xls to VVV		CHCS staff	Create Name/Address file of CHNA local participants (one per hospital) Determine interest level of area healthcare leaders.
Due by Friday 4/6/12 NOON. Send xls to VVV		CHCS staff	Find KHA CD's. Send copy of Hospital report (documentation patient draw PSA) 2010 IP/OP reports PO101E, PO202E, PO103zip, OP TOT223E.
Friday 4/6/12		VVV /CHCS	Hold 2nd Conference call. Review online survey.
Friday 4/20/12		VVV /CHCS	Prepare/send out PR story to local media announcing upcoming Town Halls plus survey (4). Send hospital/Dept of HLTH invite to REQUIRED local list (Each hospital will use your data file and use VVV letter on your letterhead).
Due by Friday 4/30/12		VVV	Prepare 2 unique files of Basic_CHNAInfo_HospXXX. Start to collect Community Resource data.
TUES 5/1 & WED 5/2 TBD		VVV /CHCS	Call EACH CHNA hospitals (2). Review Secondary Health Info Data items for your PSA. Call times TBD.
Surveys Out 4/9/12 - Due back by Monday 4/30/12 CUTOFF		VVV	FIELD WORK 2 CHNA Basic plus hospitals: Mail CHNA Primary Research (Paper survey with online link) to PSA residents. Send 1000 per PSA want 250 returns per hospital PSA.
THURS 5/10/13 11:30-1pm and 5:30-7pm to Onaga KS		VVV / CHCS	TRIP #1 Town Hall meetings. Visit Onaga and TBD Lunch/Dinner. Conduct Community Roundtables - Review Basic CHNA info RANK priorities.
On or before 6/15/12		VVV	Complete Analysis - Draft #1 - 2 communities
On or before 3/1/13		VVV	Produce & Release CHNA report. Post online.
Before 3/31/13		CHCS	Hold Board Meetings discuss CHNA needs, adopt an implementation strategy and communicate YOUR plan.

To meet IRS aligned CHNA requirements, a *four-phase methodology* was reviewed and approved as follows:

Phase I – Discovery: Conduct a 30 minute conference call with each CHNA hospital client and County Health Department. Review and confirm CHNA calendar of events. Explain and coach client to complete required participant database. In addition, schedule and organize 2-3 two day work trips to NW KS to conduct primary research recorded in Phase II activities.

Phase II – QUALIFY Community Need:

A) Conduct in depth secondary research to uncover the following historical community health status. Use KS Health Matters, a joint venture between KHA and KHDE, Vital Statistics, County Health Rankings, etc. to document “current state” of county health organized as follows:



TAB 1. Demographic Profile
TAB 2. Economic/Business Profile
TAB 3. Educational Profile
TAB 4. Maternal and Infant Health Profile
TAB 5. Hospitalization / Providers Profile
TAB 6. Behavioral Health Profile
TAB 7. Risk Indicators & Factors
TAB 8. Uninsured Profile
TAB 9. Mortality Profile
TAB 10. Preventative Quality Measures

B) Conduct primary research (if so elected) to uncover public health needs, practices and perceptions for hospital primary service areas. Both mail/online surveys are recommended with a survey response of 250 household or more.

Phase III – QUANTIFY Community Need: Conduct 90 minute Town Hall meeting at each county location. Each meeting reviews the CHNA secondary data, facilitated group discussion, and conducted a group ranking activity to determine the most important community health needs.

Phase IV - Complete data analysis & create comprehensive Community Health Needs Assessment. Post CHNA report findings to meet IRS CHNA criteria.

After consideration of Pottawatomie County CHNA stakeholders, the sponsoring hospital (CHCS) in collaboration with local Health Department chose the CHNA Basic plus option with the following project schedule:

Phase I: Discovery.....	April 2012
Phase II: Secondary / Primary Research.....	April - May 2012
Phase III: Town Hall Meeting.....	May 10, 2012
Phase IV: Prepare / Release CHNA report.....	July 2012–Feb 2013

Detail CHNA research & development steps are as follows:

	Suggested Development Steps
Step # 1 Commitment	<i>Determine interest level of area healthcare leaders (Hospital, Health Dept, Schools, Churches, Physicians etc), hold community meeting.</i>
Step # 2 Planning	<i>Prepare brief Community Health Needs Assessment Plan - list goals, objectives, purpose, outcome, roles, community involvement, etc. Hold Community Kick-off meeting.</i>
Step # 3 Secondary Research	<i>Collect & Report Community Health Published Facts. Gather data health practice data from published secondary research sources i.e. census, county health records, behavioral risk factors surveillance, etc.</i>
Step # 4a Primary Research	<i>Conduct Community Roundtable (Qualitative Research). Review Secondary Research (Step3) with Community Stakeholders. Gather current opinions and identify health needs.</i>
Step # 4b Primary Research <Optional>	<i>Collect Community Opinions. (Quantitative Research). Gather current opinions (Valid sample size) regarding community health needs and healthcare practices. If appropriate, conduct Physician Manpower Assessment to determine FTE Physician need by specialty.</i>
Steps # 5 Reporting	<i>Prepare/Present comprehensive Community Health Needs Assessment report (to community leaders) with Recommended Actions to improve health. < Note: Formal report will follow IRS Notice 2011-52 regs ></i>
	VVV Research & Development INC 913 302-7264

Overview of Town Hall Community Priority Setting Process

Each community has a wealth of expertise to be tapped for CHNA development. For this reason, a town hall is the perfect forum to gather community insight and provide an atmosphere to objectively consensus build and prioritize county health issues.

All Town Hall priority-setting and scoring processes involve the input of key stakeholders in attendance. Individuals and organizations attending the Town Halls were critically important to the success of the CHNA. The following list outlines partners invited to Town Hall: local hospital, public health community, mental health community, free clinics, community-based clinics, service providers, local residents, community leaders, opinion leaders, school leaders, business leaders, local government, faith-based organizations and persons (or organizations serving them), people with chronic conditions, uninsured community members, low income residents, and minority groups.

Pottawatomie County's Town Hall was held over lunch on Thursday May 10th, 2012, at the Onaga Community Center. Vince Vandelaar and Amanda Burian facilitated this 1 ½ hour session with twenty nine (29) community attendees. (Note: a detail roster of Town Hall attendees is listed in Section V a.)

The following Town Hall agenda was conducted:

1. Welcome & Introductions
2. Review purpose for the CHNA Town Hall and roles in the process
3. Present / Review of historical County Health Indicators (10 TABS)
4. Facilitate Town Hall participant discussion of data (probe health strengths / concerns). Reflect on size and seriousness of any health concerns cited and discuss current community health strengths.
5. Engage Town Hall participants to rank health needs (using 4 dots to cast votes on priority issues). Tally & rank top community health concerns cited.
6. Close meeting by reflecting on the health needs / community voting results. Inform participants on "next steps".

At the end of each Town Hall session, VVW encouraged all community members to continue to contribute ideas to both hospital and health department leaders via email or personal conversations.

< NOTE: To review detail Town Hall discussion content, please turn to Section V for detail notes of session and activity card content reporting of open end comments.>

Community Health Needs Assessment Pottawatomie County KS Town Hall Meeting

Vince Vandelaar, MBA
VVV Research & Development INC.
Owner and Adjunct Marketing Professor

Olathe, Kansas 66061
vmlvandelaar@aol.com

<http://sites.google.com/site/vvvresearchdevelopment/>
Blackberry: 913-302-7264

Community Health Needs Assessment (CHNA) Town Hall Discussion Agenda

- I. Opening / Introductions (10 mins)
- II. Review CHNA Purpose & Process (10 mins)
- III. Review Current County "Health Status" – Secondary Data by 10 TAB Categories (25 mins)
- IV. Collect Community Health Perspectives , Ask your opinion. (20 mins)
- V. Community Health Voting Activity: Determine MOST Important Health areas (20 mins)
- VI. Close / Next Steps (5 mins)

VVV Marketing & Development INC. Oct 2011

I. Introduction:

Background and Experience



Vince Vandelaar MBA, VVV Marketing & Development INC
Principal Consultant, Olathe, KS 913 302-7264

- > – Professional Consulting Services: Strategic Planning, Marketing Management, Business Research & Development Focus : Strategy , Research , Deployment
 - > – Over 25 years of experience with Tillinghast, BCBSKC, Saint Luke's
- Adjunct Professor - Marketing / Health Admin.- 24 years +
- > Webster University (1988 – present)
 - > Rockhurst University (2010 – present)

Amanda Burian MBA, Business Development Analyst

Town Hall Participation (You)

- ALL attendees welcome to share.
 - Parking Lot
- There are no right or wrong answers.
- Only one person speaks at a time.
- Please give truthful responses.
- Have a little fun along the way.

I. Introductions: a conversation with the community.

Community members and organizations invited to CHNA Town Hall

Consumers: Uninsured/underinsured people, Members of at-risk populations, Parents, caregivers and other consumers of health care in the community, and Consumer advocates.

Community leaders and groups: The hospital organization's board members, Local clergy and congregational leaders, Presidents or chairs of civic or service clubs - Chamber of Commerce, veterans' organizations, Lions, Rotary, etc., Representatives from businesses - owners/CEO's of large businesses (local or large corporations with local branches), Business people & merchants (e.g., who sell tobacco, alcohol, or other drugs), Representatives from organized labor, Political, appointed and elected officials, Foundations, United Way organizations. And other "community leaders."

Public and other organizations: Public health officials, Directors or staff of health and human service organizations, City/Community planners and development officials, Individuals with business and economic development experience, Welfare and social service agency staff, Housing advocates - administrators of housing programs: homeless shelters, low-income-family housing and senior housing, Education officials and staff - school superintendents, principals and teachers, Public safety officials, Staff from state and area agencies on aging, Law enforcement agencies - Chiefs of police, Local colleges and universities, Coalitions working on health or other issues.

Other providers: Physicians, Leaders in other not-for-profit health care organizations, such as hospitals, clinics, nursing homes and home-based and community-based services, Leaders from Catholic Charities and other faith-based service providers, Mental health providers, Oral health providers, Health insurers, Parish and congregational nursing programs, Other health professionals

II. Purpose: Why conduct Community Health Needs Assessment?

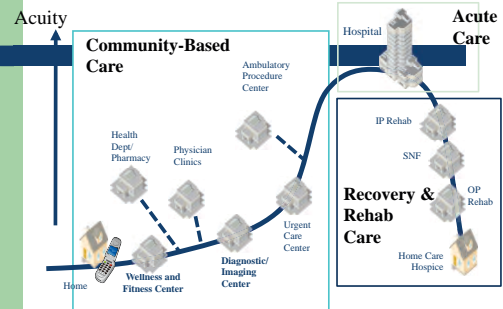
- To determine health-related trends and issues of the community.
- To understand/evaluate health delivery programs in place.
- To develop strategies to address unmet health needs.
- To meet Federal requirements - both local hospital & Health Department.

II. Review CHNA Definition

A Community Health Needs Assessment (CHNA) is a systematic collection, assembly, analysis, and dissemination of information about the health of the community. *<NOTE: Some the data has already been collected (published) by local, state and federal public health organizations. Some data will be collected today.>*

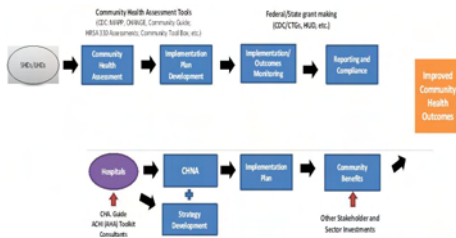
CHNA's role is to identify factors that affect the health of a population and determine the availability of resources to adequately address those factors.

Future System of CARE Sg2



IP = inpatient; SNF = skilled nursing facility; OP = outpatient.

Community Health Needs Assessment Joint Process: Hospital & Health Department



II. Required Written Report IRS 990 Documentation

- a description of the community served
- a description of the CHNA process
- the identity of any and all organizations & third parties which collaborated to assist with the CHNA;
- a description of how the organization considered the input of persons representing the community (*e.g., through meetings, focus groups, interviews, etc.*), who those persons are, and their qualifications;
- a prioritized description of all of the community needs identified by the CHNA and
- a description of the existing health care facilities and other resources within the community available to meet the needs identified through the CHNA.

III. Review Current County "Health Status" – Secondary Data by 10 TAB Categories plus KS State Rankings

TAB 1. Demographic Profile
TAB 2. Economic/Business Profile
TAB 3. Educational Profile
TAB 4. Maternal and Infant Health Profile
TAB 5. Hospitalization / Providers Profile
TAB 6. Behavioral Health Profile
TAB 7. Risk Indicators & Factors
TAB 8. Uninsured Profile
TAB 9. Mortality Profile
TAB 10. Preventative Quality Measures

IV. Collect Community Health Perspectives Ask your opinion. Your thoughts?

- Today: What are the *strengths* of our community that contribute to health
- Today: Are there healthcare services in your community / neighborhood that you feel *need to be improved and / or changed*?
- Tomorrow: What is occurring or might occur *that affects the health of our community*?

V. Have we forgot anything?

- a. Aging Services
- b. Chronic Pain Management
- c. Dental Care/Oral Health
- d. Developmental Disabilities
- e. Domestic Violence,
- f. Early Detection & Screening
- g. Environmental Health
- h. Exercise
- i. Family Planning
- j. Food Safety
- k. Health Care Coverage
- l. Health Education
- m. Home Health
- n. Hospice
- o. Hospital Services
- p. Maternal, Infant & Child Health
- q. Nutrition
- r. Pharmacy Services
- s. Primary Health Care
- t. Public Health
- u. School Health
- v. Social Services
- w. Specialty Medical Care Clinics
- x. Substance Abuse
- y. Transportation
- z. Other _____

Community Health Needs Assessment

Questions Next Steps ?

VVV Research & Development INC.

vmivandehaar@aol.com

913 302-7264

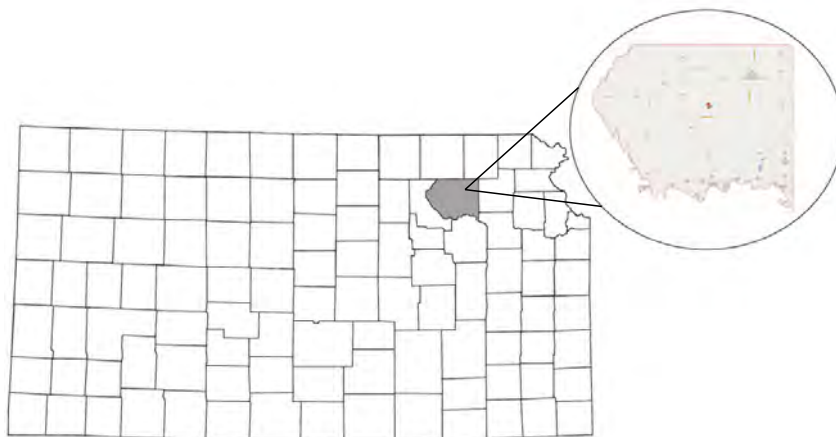
II Methodology

d. Community Profile (Demographic/Economics)

A description of community served

Pottawatomie County Community Profile

Demographics



The population of Pottawatomie County was estimated to be 21,604 citizens in 2010, and had a 18.6% change in population from 2000–2010.¹ The county covers 828 square miles and this area includes the Charles E. Grazmather Municipal Airport, Columbian Theatre, Pottawatomie Wabunsee Regional Library, Oz Museum, Rock Creek Valley Historical Society Museum, and the Wamengo Historical Museum.² The county has an overall population density of 14 persons per square mile, compared to the State average of 25.7 persons per square mile. The county is located in eastern Kansas and construction, educational services, agriculture, forestry, fishing, hunting, public administration, utilities, repair and maintenance are the most common industries in its economy.³ The county was founded in 1886 and the county seat is Westmoreland.⁴

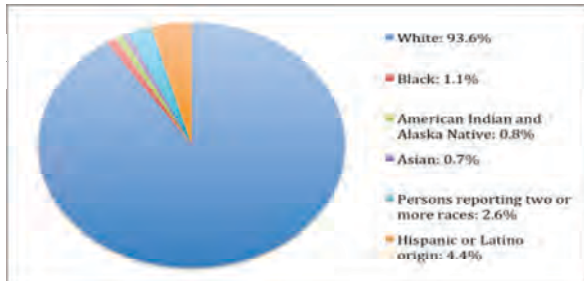
¹ <http://quickfacts.census.gov/qfd/states/20/20149.html>

² <http://skyways.lib.ks.us/counties/PT/>

³ http://www.city-data.com/county/Pottawatomie_County-KS.html

⁴ <http://skyways.lib.ks.us/counties/PT/>

Population by Race



The major highway transportation access to Pottawatomie County is Kansas Highway 99 and Kansas Highway 63 which run north and south, Kansas Highway 16 which runs east and west, and Kansas Highway 13 which runs from the south east corner of the county to its center.

Homeownership in Pottawatomie County is better than other counties in the state. Median price of an owner-occupied home in Pottawatomie County is \$138,600, higher than the state median value of \$122,600. Pottawatomie County has a homeownership rate of 81%, higher than the state average (69.4%).

Employment in Pottawatomie County resulted in a median household income of \$52,861 in 2010 versus the state median household income of \$47,888.⁵ In June of 2011, average weekly wages in Pottawatomie County were reported at \$644 with average state weekly wage at \$754.⁶

The percentage of unemployed workers in the civilian labor force in Pottawatomie County is 5% compared to the state average unemployment rate of 5.42% as of May 2011.⁷

⁵ <http://www.bls.gov/ro7/qcewks.pdf>

⁶ <http://www.ers.usda.gov/Data/Unemployment/RDList2.asp?ST=KS>

⁷ <http://unemployment-rates-county.findthedata.org/l/87865/Pottawatomie-County-KS>

Detail Demographic Profile Pottawatomie County KS										
SA	ZIP	NAME	County	Population:			Households			Per Capita Income 11
				Yr2011	Yr2016	Chg	Yr2011	Yr2016	Avg Size	
D	66540	SOLDIER	JACK	532	539	1.3%	206	208	2.58	\$20,316
D	66422	EMMETT	POTT	472	483	2.3%	162	164	2.91	\$19,188
D	66432	HAVENSVILLE	POTT	399	408	2.3%	155	160	2.57	\$19,404
D	66521	ONAGA	POTT	1578	1642	4.1%	627	652	2.46	\$18,481
P	66407	BELVUE	POTT	283	292	3.2%	98	99	2.89	\$18,900
P	66426	FOSTORIA	POTT	10	10	0.0%	3	3	3.33	\$16,154
P	66520	OLSBURG	POTT	643	658	2.3%	262	269	2.45	\$22,107
P	66535	SAINT GEORGE	POTT	2478	2648	6.9%	940	1010	2.33	\$20,825
P	66536	SAINT MARYS	POTT	3996	4520	13.1%	1159	1294	3.35	\$15,974
P	66547	WAMEGO	POTT	7362	7817	6.2%	2812	3007	2.59	\$20,580
P	66549	WESTMORELA	POTT	1586	1603	1.1%	614	621	2.47	\$19,299
S	66416	CIRCLEVILLE	JACK	454	460	1.3%	174	176	2.61	\$19,832
S	66436	HOLTON	JACK	5987	6258	4.5%	2450	2573	2.4	\$20,631
S	66509	MAYETTA	JACK	2495	2494	0.0%	935	943	2.66	\$22,257
S	66427	FRANKFORT	MAR	1281	1238	-3.4%	514	498	2.41	\$19,243
S	66544	VERMILLION	MAR	431	441	2.3%	191	198	2.25	\$22,007
S	66415	CENTRALIA	NEM	847	843	-0.5%	331	331	2.46	\$16,075
S	66417	CORNING	NEM	493	477	-3.2%	186	183	2.65	\$18,011
Totals Pottawatomie County Only				18,807	20,081	6.8%	6,832	7,279	2.6	\$19,091
Totals CHCS Primary Service Area zips				31,327	32,831	4.8%	11,819	12,389	2.6	\$19,405

SA	ZIP	NAME	County	Population 2011:			GenX	MALES	FEMALES	Females Age20_35
				Yr2011	POP65p	%				
D	66540	SOLDIER	JACK	532	78	14.7%	105	276	256	49
D	66422	EMMETT	POTT	472	49	10.4%	110	240	232	40
D	66432	HAVENSVILLE	POTT	399	73	18.3%	77	212	187	27
D	66521	ONAGA	POTT	1578	307	19.5%	336	793	785	146
P	66407	BELVUE	POTT	283	28	9.9%	66	144	139	24
P	66426	FOSTORIA	POTT	10	0	0.0%	2	6	4	0
P	66520	OLSBURG	POTT	643	94	14.6%	138	333	310	62
P	66535	SAINT GEORGE	POTT	2478	175	7.0%	1446	1267	1211	576
P	66536	SAINT MARYS	POTT	3996	484	12.1%	1026	1966	2030	398
P	66547	WAMEGO	POTT	7362	937	12.7%	1971	3603	3759	950
P	66549	WESTMORELA	POTT	1586	278	17.5%	320	786	800	155
S	66416	CIRCLEVILLE	JACK	454	67	14.8%	87	236	218	41
S	66436	HOLTON	JACK	5987	1114	18.6%	1296	2917	3070	654
S	66509	MAYETTA	JACK	2495	320	12.8%	541	1277	1218	248
S	66427	FRANKFORT	MAR	1281	316	24.7%	257	639	642	119
S	66544	VERMILLION	MAR	431	89	20.6%	93	224	207	37
S	66415	CENTRALIA	NEM	847	161	19.0%	187	447	400	83
S	66417	CORNING	NEM	493	78	15.8%	104	267	226	41
Totals Pottawatomie County Only				18,807	2,425	12.9%	5,492	9,350	9,457	2,378
Totals CHCS Primary Service Area zips				31,327	4,648	14.8%	8,162	15,633	15,694	3,650

Detail Demographic Profile Pottawatomie County KS

SA	ZIP	NAME	County	Population 2011:					Hholds Yr2011	# \$50K+ Income
				White	Black	Asian	Amer IN	Hisp		
D	66540	SOLDIER	JACK	479	2	1	34	9	206	90
D	66422	EMMETT	POTT	417	3	0	34	24	162	70
D	66432	HAVENSVILLE	POTT	382	0	2	2	15	155	63
D	66521	ONAGA	POTT	1523	3	9	6	51	627	202
P	66407	BELVUE	POTT	269	2	0	3	14	98	41
P	66426	FOSTORIA	POTT	10	0	0	0	0	3	1
P	66520	OLSBURG	POTT	621	1	0	5	18	262	121
P	66535	SAINT GEORGE	POTT	2099	120	111	13	149	940	6285
P	66536	SAINT MARYS	POTT	3658	37	21	63	337	1159	488
P	66547	WAMEGO	POTT	6964	52	34	47	271	2812	1252
P	66549	WESTMORELA	POTT	1533	8	2	11	32	614	223
S	66416	CIRCLEVILLE	JACK	419	2	1	19	7	174	76
S	66436	HOLTON	JACK	5508	44	31	175	196	2450	933
S	66509	MAYETTA	JACK	1970	11	1	394	92	935	469
S	66427	FRANKFORT	MAR	1256	5	1	1	19	514	171
S	66544	VERMILLION	MAR	420	1	0	1	6	191	71
S	66415	CENTRALIA	NEM	815	6	4	5	13	331	83
S	66417	CORNING	NEM	479	1	0	3	2	186	69
Totals Pottawatomie County Only				17,476	226	179	184	911	6,832	8,746
Totals CHCS Primary Service Area zips				28,822	298	218	816	1,255	11,819	10,708

Source: ERSA Demographics

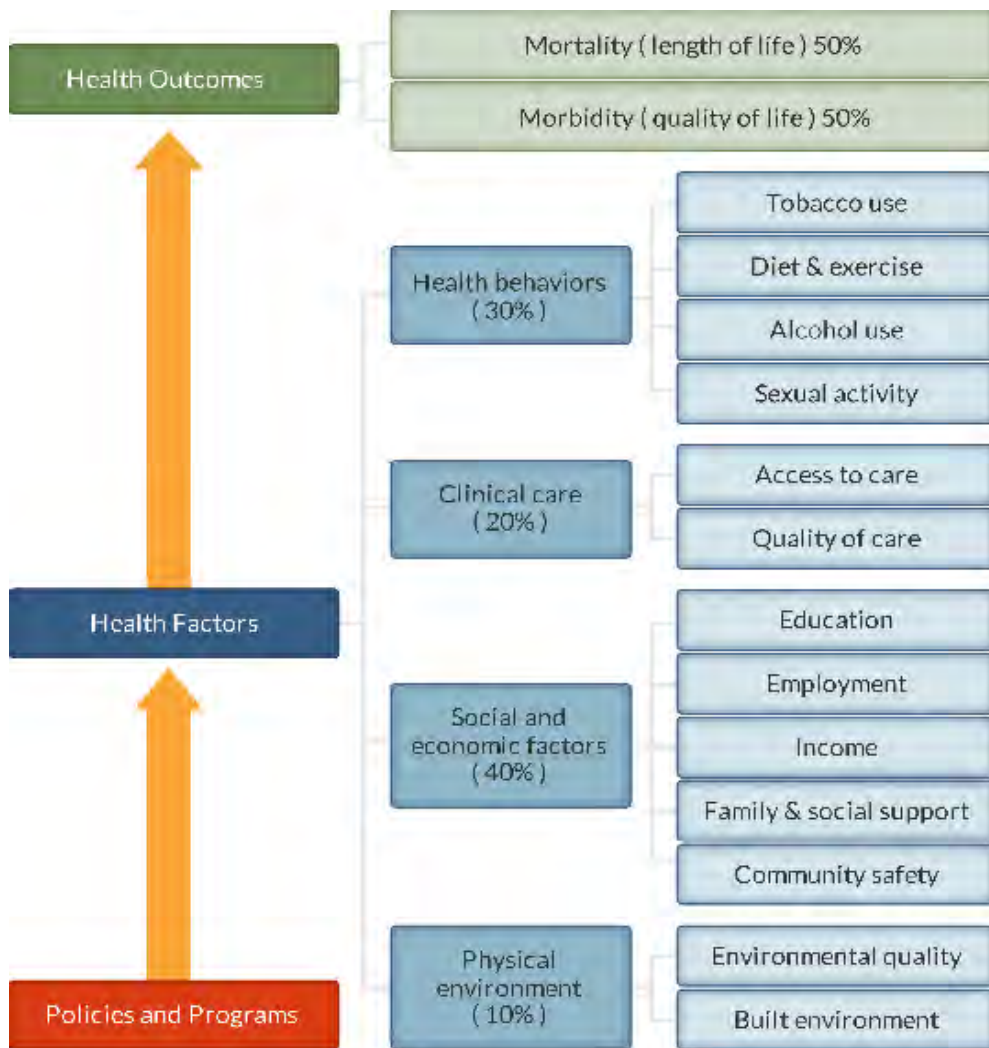
III. Community Health Status

[VVV Research & Development INC]

III. Community Health Status
a. Historical Health Statistics

Health Status Profile – Pottawatomie County KS

This section of the CHNA reviews published quantitative community health indicators and results of our recent CHNA Town Hall. To produce this profile, VVV Research & Development staff analyzed data from multiple sources. This analysis focuses on a set of published health indicators organized by ten areas of focus (10 TABS), results from the 2012 County Health Rankings and conversations from Town Hall primary research. (Note: The Robert Wood Johnson Foundation collaborates with the University of Wisconsin Population Health Institute to release annual *County Health Rankings*. As seen below in model, these rankings are based on a number of health factors.)



County Health Rankings model ©2012 UWPHI

2012 State Health Rankings for Pottawatomie, Kansas

#	KS Rank of 105 counties	Definitions	Pottawatomie County	Trend	CAH KS 10
1	Physical Environment	Environmental quality	89		60
2	Health Factors		16		40
2a	Clinical Care	Access to care / Quality of Care	21		57
2b	Social & Economic Factors	Education, Employment, Income, Family/Social support, Community Safety	12		36
3	Health Outcomes		6		43
3a	Health Behaviors	Tobacco Use, Diet/Exercise, Alcohol Use, Sexual Activity	30		44
3b	Morbidity	Quality of life	15		44
3c	Mortality	Length of life	9		38
http://www.countyhealthrankings.org					

One of the IRS CHNA requirements is to understand community health strengths and weaknesses. Below is a table documenting Town Hall healthcare areas of strength and weakness relating to availability, access, and/or quality.

Pottawatomie Co KS (N = 29)	
Town Hall Strengths Cited	Town Hall Weaknesses Cited
Access to fitness centers	Expand availability of assisted living
Close knit communities that care about one another (help with transportation)	Infant immunization
Access to pharmacies	Access to specialist care
Faith based	Availability for more school screenings and wellness preventive programs
Great partnerships	Getting marginally disabled back to work
Affordability	Uninsured and underinsured
Quality EMS and ER	Resources for repair and replacement of facilities and equipment
One doctor for every 1236 people	Increased funding for early childhood education and intervention
Healthy living	Access to healthy foods when eating out
Low unemployment	Increasing number on food assistance
Great economy	Underemployment; low wages for the employed
Schools interested in health	Child care facilities for working moms
Home health program	Economic impact of health
Great access	Increase services to keep the elderly living at home as long as possible
Very forward thinking Board of Directors	Suicide rates
Self assessment - 90% of people felt they were in good health	Level of free care
Creatively solve any issues that come up	Low birth weight babies
People over 65 are well enough to be living in homes alone	Moms that smoke
Nursing care	More counseling and education for obese & for mental health
Good mix of young/old in population	Obesity
Rated 21 out of 100 for clinical care	Wellness Educational programs

Secondary Research

When considering the state of community health, it's important to review published health data by topic area. Below is a summary of key TABS of information collected:

Tab 1 & 2 Demographics/Economics

#	Population History - Vital Statistics	% Change 2006-2010	YR 2006	YR 2007	YR 2008	YR 2009	YR 2010
1	Pottawatomie County Population	12.4%	19,220	19,396	19,695	19,994	21,604
#	People QuickFacts	Pottawatomie	Trend	KS	CAH KS 10		
1	Population, 2010	21,604		2,853,118	6,710		
2	Population, percent change, 2000 to 2010	18.6%		6.1%	-5.8%		
3	Population, 2000	18,209		2,688,418	6,682		
4	Persons under 5 years, percent, 2010	8.5%		7.2%	5.9%		
5	Persons under 18 years, percent, 2010	29.7%		25.5%	22.7%		
6	Persons 65 years and over, percent, 2010	12.3%		13.2%	19.8%		
7	Female, percent, 2010	50.4%		50.4%	49.2%		

#	HealthMatters.com Categories	Pott Co	Trend	State of KS	CAH KS 10
1	Ratio of Children to Adults (% children to adults)	35.8			29.2
2	Ratio of Elderly Persons to Adults (% elderly to adults)	19.5			31.5
3	Ratio of Elderly Persons and Children to Adults (% elderly / children to adults)	55.3			60.7
4	Voter Turnout (%)	69.6		72.3	71.3
#	HealthMatters.com Categories	Pottawatomie	Trend	State of KS	CAH KS 10
5	People Living Below Poverty Level (%)	7.1		12.2	10.3
6	People Living 200% Above Poverty Level (%)	71.5		69.3	65.7
7	People 65+ Living Below Poverty Level (%)	8%		8	6.5
8	People 65+ Living Alone (%)	31.7		29.6	27.7
9	Language other than English spoken at home, pct age 5+, 2005-2009			9.90%	

Source U.S. Census Bureau: State and County QuickFacts. Data derived from Population Estimates, American Community Survey, Census of Population and Housing, Small Area Income and Poverty Estimates, State and County Housing Unit Estimates, County Business Patterns, Nonemployer Statistics, Economic Census, Survey of Business Owners, Building Permits, Consolidated Federal Funds Report

#	People QuickFacts	Pottawatomie	Trend	State of KS	CAH KS 10
1	Households, 2005-2009	7,608		1,093,694	2,578
2	Persons per household, 2005-2009	2.52		2.46	2.2
3	Per capita money income in past 12 months (2009 dollars) 2005-2009	\$25,576		\$25,522	\$20,856
4	Median household income, 2009	\$54,949		\$47,709	\$41,865

#	Business QuickFacts	Pottawatomie	Trend	State of KS	CAH KS10
1	Private nonfarm establishments, 2009	564		746,981	217
2	Private nonfarm employment, 2009	7,612		11,462,631	2,074
3	Private nonfarm employment, percent change 2000-2009	29.10%		1.60%	4%
4	Nonemployer establishments, 2009	1356		173,946	493
5	Total number of firms, 2007	2463		237,040	876
6	Households with Public Assistance (%)	1.9		2.3	
7	Homeownership (%)	74.7		62.6	
	Indicator http://www.countyhealthrankings.org	Pottawatomie	Trend	KS	CAH KS10
1	Children in poverty	12%		18%	17%
2	Fast food restaurants	39%		48%	42%
2	Unemployment	5.30%		7.00%	4.6%
3	Violent crime rate	236		421	226
#	HealthMatters.com Categories	Pottawatomie	Trend	State of KS	CAH KS10
1	Average Monthly WIC Caseload (per 1,000 pop)	17.4		2.7	24.6
2	Rate of Violent Crime (per 1,000 population)	2.4			1.7
3	Households without a Vehicle (%)	2.3		5.1	3.9
5	Families Living Below Poverty Level (%)	5.3		2.3	6.2

Tab 3 Public Schools Health Delivery Profile. Currently school districts are providing on site primary health screenings and basic care.

#	Indicators	Onaga Schools
1	Total # Public School Nurses	1
2	School Nurse is part of the IEP team	No
3	School Wellness Plan (Active)	No
4	VISION: # Screened / Referred to Prof / Seen by Professional	170/11/6
5	HEARING: # Screened / Referred to Prof / Seen by Professional	107/5/3
6	ORAL HEALTH: # Screened / Referred to Prof / Seen by Professional	156/7/na
7	SCOLIOSIS: # Screened / Referred to Prof / Seen by Professional	0
8	# of Students served with no identified chronic health concerns	304
9	School has a suicide prevention program	Yes
10	Compliance on required vaccinations (%)	321 compliant, 9 are religiously exempt.

	Indicator http://www.countyhealthrankings.org	Pott Co	Trend	KS	CAH KS10
1	High school graduation	92%		80%	91%
2	Some college	70%		66%	59%

#	Healthmatters.com Categories	Pott Co	Trend	State of KS	CAH KS10
1	Student-to-Teacher Ratio (% Student / Teacher)	12.3		13.7	11.3
2	Students Eligible for the Free Lunch Program (%)	19.5			26.5
3	Poverty Status by School Enrollment (%)	6.7			7.5

TAB 4 Maternal and Infant Health Profile. Tracking maternal & infant care patterns are vital in understanding the foundation of family health.

#	Vital Statistics: Maternal and Infant Health Profile	Pottawatomie	Trend	State of KS	CAH KS10
1	Total Live Births, 2006	334		40,896	809
2	Total Live Births, 2007	356		41,951	879
3	Total Live Births, 2008	340		41,815	829
4	Total Live Births, 2009	350		41,388	876
5	Total Live Births, 2010	382		40,439	894
6	Total Live Births, 2006-2010 - Five year Rate (%)	17.6%		14.70%	11.6%
7	Low Weight Births (under 2,500 grams / 5 lb. 8 oz.)	22		9,961	127
8	Percent Premature (<37 weeks)	8.9%		8.8%	8.14%
10	Births with Prenatal Care in First 3 Months	293		29552	686
11	Percentage of Mothers Who Initiate Breastfeeding	86.4%		77.2%	81.0%
12	Mothers Who Smoke Any Time During Pregnancy	36		5919	130
13	Percentage of Mothers who Smoke Any Time During Pregnancy	9.50%		15%	18.2%

#	HealthMatters.com Categories	Pottawatomie	Trend	State of KS	CAH KS10
1	Births Occurring to Teens per 1,000 Pop	6.3			8.9
2	Percent of WIC Mothers Breastfeeding Exclusively (%)	18.9			15.6
3	Percent of Births with Low Birth Weight (%)	5.5			8.1
4	Percent of Births with Inadequate Birth Spacing (%)	15.5			13.4
5	Percent of Births Where Prenatal Care began in First Trimester (%)	76.4			76.4

TAB 5 Hospitalization/Provider Profile Understanding provider access and disease patterns are fundamental in healthcare delivery. Listed below are several vital county statistics.

#	Kansas Hospital Assoc PO101	CHCS (only)			
		FFY2009	FFY2010	FFY2011	Trend
1	Total Discharges	881	845	754	
2	Total IP Discharges-Age 0-17	27	28	41	
3	Total IP Discharges-Age 18-29	36	27	27	
4	Total IP Discharges-Age 30-44	111	114	102	
5	Total IP Discharges-Age 45-64	91	106	93	
6	Total IP Discharges-Age 65+	358	324	308	
7	Psychiatric	4	3	5	
8	Obstetric	147	139	107	
9	Newborn	107	104	71	
10	Surgical %	12.4%	6.6%	8.4%	

#	HealthMatters.com Categories	Pottawatomie	Trend	State of KS	CAH KS10
1	Injury Hospital Admission Rate (per 100,000 pop)	843.9			920.8
2	Heart Disease Hospital Admission Rate (per 100,000 Pop)	343.8			388.3
3	Congestive Heart Failure Hospital Admission Rate (per 100,000 Pop)	299			292.8
4	Chronic Obstructive Pulmonary Disease (COPD) Hospital Admission Rate (per 100,00)	144.9			269.6
5	Bacterial Pneumonia Hospital Admission Rate (per 100,000)	424.3			674.7
	countyhealthrankings.org	Pott Co	Trend	State of KS	CAH KS10
1	Preventable hospital stays	78		70	115
2	Primary care physicians per 1	1236		857	1,176

TAB 6 Social & Rehab Services Profile. Behavioral health and rehabilitation care provide another important indicator of community health status. Below is a summary of the previous 3 years assistance:

	Pottawatomie						Trend
Source: Kansas Dept of	Persons Served			Annual Service Dollars			
Social & Rehab Services	FY 2009	FY 2010	FY 2011	FY 2009	FY 2010	FY 2011	
Managed Behavioral Health Services							
Substance Abuse (PIHP)	18	17	19	\$26,866	\$30,227	\$ 35,310	
Mental Health (PAHP)	219	245	264	\$323,836	\$257,964	\$ 293,932	
Home and Community Based Services							
Physical Disability	69	59	57	\$551,653	\$598,080	\$548,851	
Traumatic Brain Injury	3	6	4	\$68,574	\$90,782	\$113,522	
Developmental Disability	13	208	16	\$243,624	\$250,344	\$331,922	
Autism	0	0	0	0	\$0	\$0	
Major Services (Average per Month)							
Temporary Assistance for Families	74	94	158	\$95,117	\$131,835	\$196,752	
TANF Employment Services	25	27	47	\$12,570	\$14,348	\$21,128	
Child Care Assistance	37	46	46	\$106,751	\$154,868	\$125,229	
Food Assistance	854	1,089	1,234	\$945,564	\$1,428,373	\$1,674,320	

TAB 7 Health Risk Profiles. Knowing community health risk factors and disease patterns can aid in the understanding “next steps” to improve health. Being overweight/obese; smoking, drinking in excess, not exercising etc can lead to poor health.

	http://www.countyhealthrankings.org	Pottawatomie	Trend	State of KS	CAH KS10
1	Adult obesity	31%		30%	32%
2	Adult smoking	19%		18%	18%
3	Excessive drinking	13%		15%	12%
1	Inadequate social support	15%		16%	14%
4	Physical inactivity	25%		24%	27%
2	Poor mental health days	2.8		2.8	2.8
3	Poor physical health days	2.3		3.0	2.7
#	HealthMatters.com Categories	Pottawatomie	Trend	State of KS	CAH KS10
1	Sexually Transmitted Disease Rate (per 10,000 Pop)	0.7			2.2
2	Increased Lead Risk in Housing Rate (%)	33.0			44.8
9	Age-Adjusted Years of Potential Life Lost - Cancer (Yrs p/ 100,000 Pop)	1298			1476.6
12	Age-Adjusted Years of Potential Life Lost - Diabetes	119.4			161.5
13	Age-Adjusted Years of Potential Life Lost - Heart Disease (Yrs p/ 100,000 Pop)	1009.6			1105.9

TAB 8 Uninsured Profiles. Based on synthetic estimations, the number of insured is documented below. Also, the amount of charity care (last 3 years of free care) from area providers is trended below.

	Indicator http://www.countyhealthrankings.org	Pottawatomie	Trend	KS	CAH KS10
1	Uninsured	12%		15%	17%
#	Charity Care by Individual Facility	YR10	YR11	YR12	Trend
1	Local Hospital Charity Care	\$261,510	\$182,500	\$251,599	

TAB 9 Mortality Profile. The leading causes of county deaths are listed below. Areas of higher than expected are so noted.

#	Causes of Death by County of Residence, KS 2010			
	Selected Causes of Death (ICD-10)	Pottawatomie	Trend	State of KS
	TOTAL	146		24,428
1	Major Cardio-vascular Disease	50		7,504
2	Disease of Heart	40		5,404
3	All Malignant Neoplasms	34		5,359
4	Ischemic Heart Disease	25		3,169
5	All Other Causes	14		3,961
6	Other Heart Diseases	14		2,070
7	Chronic Lower Respiratory Diseases	10		1,581
8	Malignant Neoplasms of Digestive Organs	10		1,290
9	Cerebrovascular Diseases	8		1,367
10	Malignant Neoplasms of Respiratory and Intrathoracic Organs	8		1,539

#	HealthMatters.com Categories	Pottawatomie	Trend	State of KS	CAH KS10
1	Age-adjusted Alzheimer's Disease Mortality Rate per 100,000 population	8.7		28.6	27.9
2	Age-adjusted Atherosclerosis Mortality Rate per 100,000 population	9.7		13.7	8.2
3	Age-adjusted Cancer Mortality Rate per 100,000 population	164.7		187.8	168.7
4	Age-adjusted Cerebrovascular Disease Mortality Rate per 100,000 population	67.9		47.9	44.8
5	Age-adjusted Chronic Lower Respiratory Disease Mortality Rate per 100,000 population	41.6		55.4	50.8
6	Age-adjusted Diabetes Mortality Rate per 100,000 population	27.2		23	31.7
7	Age-adjusted Heart Disease Mortality Rate per 100,000 population	184.4		189.4	183.5
8	Age-adjusted Suicide Mortality Rate per 100,000 population	16.6		14.3	28.5
9	Age-adjusted Mortality Rate per 100,000 population	715.2		856.1	779.1
10	Age-adjusted Nephritis, Nephrotic Syndrome, Nephrosis Mortality Rate per 100,000 population	10.5		20.4	24.1
12	Age-adjusted Traffic Injury Mortality Rate per 100,000 population	16.4			35.3
13	Age-adjusted Unintentional Injuries Mortality Rate per 100,000 population	42.9		47.2	65.2

TAB 10 Preventive Health Profile. The following table reflects future health of county. This information also is an indicator of community awareness of preventative measures.

	Indicator http://www.countyhealthrankings.org	Pottawatomie	Trend	KS	CAH KS10
1	Diabetic screening	87%		85%	82%
2	Limited access to healthy foods	7%		7%	10%
3	Mammography screening	64%		67%	63%
4	Poor or fair health (Self Assess)	10%		13%	11%
#	HealthMatters.com Categories	Pottawatomie	Trend	State of KS	CAH KS10
1	Percent of Infants Fully Immunized at 24 Months (%)	79.5			82.2
2	Percentage of Adults Ages 18 Years and Older Who Received A Flu Shot During the Past 12 Months (%)	38.6		41.9	37.0
3	Percentage of Adults Participating in Recommended Level of Physical Activity (%)	49.7		48.5	47.9

Primary Research Findings

Pottawatomie County also conducted primary research during the spring of 2012. Following are key questions revealing public feelings toward health delivery satisfaction, need for further education/focus and areas needing additional education and/or attention.

Community Healthcare Needs Assessment 2012							
In general, how would you rate the overall quality of the healthcare delivered to your community?							
Answer Options	Top 2 Boxes %	Very Good	Good	Fair	Poor	Very Poor	N
Pottawatomie KS N=244	85.3%	34.1%	51.3%	11.2%	2.6%	0.0%	236
CHNA KS2012 (6) N=1984	80.2%	30.4%	49.8%	15.9%	3.2%	0.4%	1866

Community Healthcare Needs Assessment 2012										
How satisfied are you with each of the following . . . ?	Poor / Very Poor %			Very Good	Good	Fair	Poor	Very Poor	N/A	Reply
	CHNA KS N=1984	Dist N=52	Pottawatomie Co N=244							
k) Mental Health Services	23.4%	20.0%	27.8%	21	47	28	21	16	80	236
g) Family Planning Services	11.0%	14.3%	19.6%	13	45	24	11	9	108	240
b) Child Care	12.5%	25.0%	19.4%	21	57	38	19	9	72	242
l) Nursing Home	12.2%	30.0%	18.7%	38	74	27	14	18	40	241
q) School Nurse	6.7%	27.6%	15.3%	22	65	24	8	12	79	235
d) Dentists	16.8%	28.1%	14.5%	38	69	35	16	8	50	245
c) Chiropractor	3.9%	24.0%	13.0%	36	59	32	11	8	71	242
r) Specialist Physician care	9.1%	4.8%	11.7%	37	63	44	8	11	45	236
i) Hospice	6.6%	7.1%	11.6%	30	61	23	11	4	82	238
j) Inpatient Services	5.4%	2.3%	7.7%	50	77	28	7	6	41	241
f) Eye Doctor / Optometrist	6.4%	4.9%	7.5%	54	83	35	11	3	33	241
e) Emergency Room	7.9%	4.3%	6.3%	61	90	26	8	4	31	247
n) Pharmacy	2.1%	4.3%	6.3%	93	82	17	9	4	15	244
m) Outpatient Services	3.9%	2.0%	6.3%	58	94	28	7	5	24	242
h) Home Health	8.3%	2.8%	5.8%	40	86	21	6	3	62	244
p) Public Health Department	4.6%	3.0%	5.6%	36	84	31	4	5	50	239
a) Ambulance Service	4.0%	2.7%	5.3%	56	86	18	7	2	50	219
o) Primary Care	4.9%	0.0%	4.5%	73	98	21	5	4	15	238

Community Healthcare Needs Assessment 2012								
How much of a problem are the following causes of diseases or disability in your community?	Major Problem %			Not a Problem	Somewhat of a Problem	Major Problem	Don't Know	Valid N
	CHNA KS N=1984	Dist N=52	Pottawatomie Co N=244					
g) Obesity	58.5%	59.2%	55.3%	8	77	105	23	213
c) Drugs / Alcohol	57.0%	62.5%	49.4%	8	82	88	36	214
b) Diabetes	53.1%	60.4%	48.3%	9	81	84	39	213
a) Cancer	58.3%	60.4%	45.1%	11	85	79	37	212
d) Heart Disease	45.7%	47.6%	43.5%	9	87	74	42	212
f) Mental Disorders	24.0%	27.3%	23.9%	14	88	32	76	210
k) Stroke	22.5%	17.1%	23.6%	13	100	35	62	210
i) Respiratory Disease	22.3%	13.2%	20.6%	13	110	32	58	213
h) Pneumonia / Flu	15.4%	12.2%	12.8%	23	113	20	51	207
m) Trauma	14.3%	10.3%	12.4%	24	75	14	93	206
l) Suicide	15.5%	3.6%	12.1%	39	63	14	95	211
j) Sexually Transmitted Dis	13.8%	11.1%	9.8%	32	42	8	128	210
e) HIV / AIDS	3.5%	0.0%	4.4%	63	24	4	120	211

Community Healthcare Needs Assessment 2012										
How well do you feel our local health care providers are doing in addressing the health needs of the following age groups?	Poor / Very Poor %			Very Good	Good	Fair	Poor	Very Poor	N/A	Reply
	CHNA KS N=1984	Dist N=52	Pottawatomie Co N=244							
Infants	7.2%	0.0%	7.9%	43	74	23	8	4	47	152
Age 1 - 12	5.6%	2.2%	7.7%	49	82	25	9	4	38	169
Age 13 -17	5.8%	4.7%	7.7%	45	86	24	10	3	35	168
Age 18 - 44	5.6%	4.3%	7.3%	41	97	27	9	4	29	178
Age 45 - 64	5.8%	4.3%	5.9%	47	97	32	6	5	21	187
Age 65 - 84	7.8%	2.3%	6.3%	54	87	37	5	7	21	190
Over 85	9.2%	5.0%	9.1%	53	74	32	9	7	30	175

Community Healthcare Needs Assessment 2012

In your opinion, what areas need additional education or attention in our community? (Check all that apply)	KS CHNA NORM N=1984	%	Dist N=52	%	Pott CO N=244	%
l) Obesity	1090	8.4%	36	9.3%	127	8.7%
p) Preventative Healthcare	745	5.7%	19	4.9%	96	6.5%
x) Wellness Education	666	5.1%	25	6.5%	91	6.2%
k) Nutrition	705	5.4%	23	6.0%	90	6.1%
b) Aging (Dementia)	801	6.2%	25	6.5%	89	6.1%
c) Alcohol	842	6.5%	25	6.5%	84	5.7%
t) Tobacco Use	652	5.0%	21	5.4%	79	5.4%
u) Uninsured	636	4.9%	18	4.7%	69	4.7%
a) Abuse / Violence	674	5.2%	17	4.4%	66	4.5%
e) Child Care	495	3.8%	21	5.4%	65	4.4%
i) Mental Illness	558	4.3%	17	4.4%	61	4.2%
n) Pain Management	512	4.0%	20	5.2%	60	4.1%
f) Chronic Diseases	442	3.4%	11	2.8%	55	3.7%
g) Family Planning / Birth Control	450	3.5%	15	3.9%	53	3.6%
o) Poverty	474	3.7%	14	3.6%	52	3.5%
d) Alternative Medicine	398	3.1%	9	2.3%	51	3.5%
s) Teen Pregnancy	701	5.4%	13	3.4%	47	3.2%
v) Vaccinations	264	2.0%	13	3.4%	44	3.0%
j) Neglect	399	3.1%	12	3.1%	43	2.9%
w) Water Quality	379	2.9%	8	2.1%	39	2.7%
r) Suicide	483	3.7%	10	2.6%	35	2.4%
q) Sexually Transmitted Diseases	314	2.4%	9	2.3%	32	2.2%
h) Lead Exposure	117	0.9%	3	0.8%	18	1.2%
Other (please specify)	99	0.8%	0	0.0%	14	1.0%
m) Ozone	65	0.5%	2	0.5%	7	0.5%
	12961	100.0%	386	100.0%	1467	100.0%

Community Healthcare Needs Assessment 2012

Compared to a year ago, how would you rate your overall health in general now?	KS CHNA NORM N=1984	%	Dist N=52	% Yes	Pott CO N=244	% Yes
Much better than a year ago	225	12.6%	5	9.6%	33	15.5%
About the same	1495	83.6%	43	82.7%	172	80.8%
Much Worse than a year ago	69	3.9%	4	7.7%	8	3.8%
Totals	1789	100.0%	52	100.0%	213	100.0%

Community Healthcare Needs Assessment 2012

Do you follow these health practices. . .?	KS CHNA NORM N=1984	%	Dist N=52	% Yes	Pott CO N=244	% Yes
If over 50, have you had a colonoscopy?	1055	69.6%	28	53.8%	129	72.1%
If male over 50, do you have annual prostate exams?	472	67.3%	12	23.1%	50	66.0%
If female over 40, do you have annual mammograms?	1066	79.1%	30	57.7%	135	75.6%
If female, do you have a pap smear every other year?	1237	71.5%	33	63.5%	156	73.1%
Do you get 2.5 hours a week of moderately intense physical activity?	1569	62.5%	32	61.5%	211	64.9%
Are you. . .?	KS CHNA NORM N=1984	%	Dist N=52	% Yes	Pott CO N=244	% Yes
Eating right	1659	71.8%	26	50.0%	212	64.6%
Using tobacco products	1410	10.9%	4	7.7%	200	11.0%
Exercising	1634	68.4%	32	61.5%	212	68.4%
Excessive Alcohol Consumption	1365	3.2%	1	1.9%	208	4.8%

Community Healthcare Needs Assessment 2012

Over the past 2 years, did you or your household receive health care services outside of your county?	KS CHNA NORM N=1984	%	DIST N=52	%	Pottawatomie CO N=244	%
Yes	1095	59.8%	34	65.4%	149	67.7%
No	735	40.2%	18	34.6%	71	32.3%
Total	1830		52		220	
Does our community need any additional healthcare providers?	KS CHNA NORM N=1984	%	DIST N=52	%	Pottawatomie CO N=244	%
Yes	947	62.5%	23	53.5%	80	44.0%
No	567	37.5%	20	46.5%	102	56.0%
Totals	1514		43		82	
Does your household have a provider you use for primary care?	KS CHNA NORM N=1984	%	DIST N=52	%	Pottawatomie CO N=244	%
Yes	1556	88.2%	48	92.3%	197	91.6%
No	208	11.8%	4	7.7%	18	8.4%
Totals	1764		52		170	
Have you had a physical in the past 12 months?	KS CHNA NORM N=1984	%	DIST N=52	%	Pottawatomie CO N=244	%
Yes	1360	76.9%	44	86.3%	161	76.7%
No	409	23.1%	7	13.7%	49	23.3%
Totals	1769		51		210	
In general, how would you best describe your health? (Choose one)	KS CHNA NORM N=1984	%	Pott DIST N=52	%	Pottawatomie CO N=244	%
Very Good	395	21.9%	5	10.0%	44	20.5%
Good	1060	58.9%	36	72.0%	129	60.0%
Fair	295	16.4%	10	20.0%	36	16.7%
Poor	42	2.3%	1	2.0%	5	2.3%
Very Poor	9	0.5%	0	0.0%	1	0.5%
Totals	1801		52		215	

Finally, it is important to review open end comments. Below is a summary of the most popular themes per 3 open end CHNA questions.

CHNA Primary Research - Pottawatomie County KS N=244					
Code	Counts by Open Ended Theme	Q3: Over the past 2 years, use HC services outside of AC?	Q4: Are there HC services to be improved and/or changed?	Q7: Does our community need any additional HC providers?	Totals
	Total Comments	222	121	121	464
DENT	Dentist	37	9	9	55
SPEC	Specialist Physician Care	15	6	15	36
DOCS	Physicians		10	16	26
OBG	Obstetrics/Gynecology	18	3	2	23
EYE	Eye Doctor / Optometrist	18	1	1	20
ORTH	Orthopedics	14	4	2	20
PEDS	Pediatrics	9	2	9	20
PRIM	Primary Care	8	2	9	19
OTHR	Other	6	2	7	15
ACC	Access to Care		10	4	14
CHIR	Chiropractor	10	2	1	13
DERM	Dermatology	2	4	7	13
GEN	General Practitioner	8	1	3	12
BH	Mental Health	1	6	3	10
NH	Nursing Home		8	2	10
CARD	Cardiology	6	2	1	9
EMRM	Emergency Room	6	3		9
SUR	Surgery	8	1		9
ALT	Alternative Medicine	1	3	4	8

IV. Inventory of Community Health Resources

[VVV Research & Development INC]

Inventory of Health Services - Pottawatomie County KS

Cat	Services offered in county Yes / No	Hospital	HLTH Dept	Other
Clinic	Primary Care	yes		
Hosp	Alzheimer Center			
Hosp	Ambulatory Surgery Centers			
Hosp	Arthritis Treatment Center			
Hosp	Bariatric/weight control services			
Hosp	Birthing/LDR/LDRP Room	yes		
Hosp	Breast Cancer			
Hosp	Burn Care			
Hosp	Cardiac Rehabilitation	yes		yes
Hosp	Cardiac Surgery			
Hosp	Cardiology services	yes		yes
Hosp	Case Management	yes		
Hosp	Chaplaincy/pastoral care services	yes		
Hosp	Chemotherapy	yes		
Hosp	Colonoscopy	yes		
Hosp	Crisis Prevention			
Hosp	CTScanner	yes		
Hosp	Diagnostic Radioisotope Facility	yes		
Hosp	Diagnostic/Invasive Catheterization			
Hosp	Electron Beam Computed Tomography (EBCT)			
Hosp	Enrollment Assistance Services			
Hosp	Extracorporeal Shock Wave Lithotripter (ESWL)			
Hosp	Fertility Clinic			
Hosp	FullField Digital Mammography (FFDM)	yes		
Hosp	Genetic Testing/Counseling			
Hosp	Geriatric Services	yes		
Hosp	Heart			
Hosp	Hemodialysis			
Hosp	HIV/AIDS Services		yes	
Hosp	Image-Guided Radiation Therapy (IGRT)			
Hosp	Inpatient Acute Care - Hospital services	yes		
Hosp	Intensity-Modulated Radiation Therapy (IMRT) 161			
Hosp	Intensive Care Unit			
Hosp	Intermediate Care Unit	yes		
Hosp	Interventional Cardiac Catheterization			
Hosp	Isolation room	yes		
Hosp	Kidney			
Hosp	Liver	yes		
Hosp	Lung	yes		
Hosp	Magnetic Resonance Imaging (MRI)	yes		
Hosp	Mammograms	yes		
Hosp	Mobile Health Services	yes		
Hosp	Multislice Spiral Computed Tomography (<64 slice CT)	yes		
Hosp	Multislice Spiral Computed Tomography (>64+ slice CT)			
Hosp	Neonatal			
Hosp	Neurological services			yes
Hosp	Obstetrics	yes		
Hosp	Occupational Health Services	yes		
Hosp	Oncology Services			yes
Hosp	Orthopedic services	yes		yes
Hosp	Outpatient Surgery	yes		
Hosp	Pain Management	yes		
Hosp	Palliative Care Program			

Inventory of Health Services - Pottawatomie County KS				
Cat	Services offered in county Yes / No	Hospital	HLTH Dept	Other
Hosp	Pediatric	yes	yes	
Hosp	Physical Rehabilitation	yes		yes
Hosp	Positron Emission Tomography (PET)			
Hosp	Positron Emission Tomography/CT (PET/CT)	yes		
Hosp	Psychiatric Services			
Hosp	Radiology, Diagnostic	yes		
Hosp	Radiology, Therapeutic			
Hosp	Reproductive Health		yes	
Hosp	Robotic Surgery			
Hosp	Shaped Beam Radiation System 161			
Hosp	Single Photon Emission Computerized Tomography (SPECT)			
Hosp	Sleep Center	yes		
Hosp	Social Work Services	yes		yes
Hosp	Sports Medicine			
Hosp	Stereotactic Radiosurgery			
Hosp	Swing Bed Services	yes		
Hosp	Transplant Services			
Hosp	Trauma Center			
Hosp	Ultrasound	yes		yes
Hosp	Women's Health Services		yes	
Hosp	Wound Care	yes		
SR	Adult Day Care Program	yes		
SR	Assisted Living	yes		yes
SR	Home Health Services	yes		yes
SR	Hospice	yes		yes
SR	LongTerm Care	yes		yes
SR	Nursing Home Services	yes		yes
SR	Retirement Housing	yes		yes
SR	Skilled Nursing Care	yes		yes
ER	Emergency Services	yes		
ER	Urgent Care Center			
ER	Ambulance Services			yes
SERV	Alcoholism-Drug Abuse			
SERV	Blood Donor Center			yes
SERV	Chiropractic Services			yes
SERV	Complementary Medicine Services			
SERV	Dental Services			yes
SERV	Fitness Center			yes
SERV	Health Education Classes	yes	yes	
SERV	Health Fair (Annual)	yes		yes
SERV	Health Information Center			
SERV	Health Screenings	yes	yes	
SERV	Meals on Wheels			yes
SERV	Nutrition Programs	yes		
SERV	Patient Education Center	yes		
SERV	Support Groups	yes		yes
SERV	Teen Outreach Services			
SERV	Tobacco Treatment/Cessation Program			
SERV	Transportation to Health Facilities	yes		yes
SERV	Wellness Program	yes		

Physician Manpower - Pottawatomie County KS			
# of FTE Providers	Supply working in County		
	FTE County Based	FTE Visting	PA/NP
Primary Care:			
Family Practice	12.0	0.0	10.0
Internal Medicine	0.0	0.0	0.0
Obstetrics/Gynecology	1.0	0.0	0.0
Pediatrics	0.0	0.0	0.0
Medicine Specialists:			
Allergy/Immunology	0.0	0.0	
Cardiology	0.0	1.0	
Dermatology	0.0	0.0	
Endocrinology	0.0	0.0	
Gastroenterology	0.0	1.0	
Oncology/RADO	0.0	0.0	
Infectious Diseases	0.0	0.0	
Nephrology	0.0	0.0	
Neurology	0.0	1.0	
Psychiatry	0.0	1.0	
Pulmonary	0.0	1.0	
Rheumatology	0.0	0.0	
Surgery Specialists:			
General Surgery	0.0	2.0	
Neurosurgery	0.0	0.0	
Ophthalmology	0.0	0.0	
Orthopedics	1.0	0.0	
Otolaryngology (ENT)	0.0	1.0	
Plastic/Reconstructive	0.0	0.0	
Thoracic/Cardiovascular/Vasc	0.0	0.0	
Urology	0.0	1.0	
Hospital Based:			
Anesthesia/Pain	0.0	4.0	
Emergency	0.0	0.0	0.0
Radiology	0.0	6.0	
Pathology	0.0	7.0	
Hospitalist *	0.0	0.0	
Neonatal/Perinatal	0.0	0.0	
Physical Medicine/Rehab	0.0	1.0	
Others			
Eye Care (OD)	5.0	0.0	
Dentists	2.0	0.0	
Podiatry	4.0	0.0	
TOTALS	25.0	27.0	10.0

VISITING Specialists coming to CHCS - Pottawatomie locations				
CTS	Physician / SPEC	GRP	Spec	Annual Days
1	0 Audiology Clinic		AUD	10
2	G. Katz, MD Cardiology		CV	24
3	J. Hamilton, MD Cardiology		CV	2
4	J. Joliff, MD Cardiology		CV	12
5	L. Wu, MD Cardiology	Cotton	CV	12
6	P. Birkbeck, MD Cardiology	Cotton	CV	11
7	T. Doyle, MD Cardiology	Cotton	CV	11
8	N. Soto, MD Dermatology		DERM	15
9	R. Lane, MD ENT	Topeka	ENT	11
10	C. Baum, MD Gastroenterology	DHC	GAS	11
11	W. Welch, MD Neurology	Topeka	NEU	4
12	T. Trobough, MD	Topeka	OB	6
13	M. McCoy, MD Orthopedics		ORTH	20
14	M. Schmidt, MD Orthopedics		ORTH	20
15	R. Polly, MD Orthopedics		ORTH	6
16	K. Hobbs, DPM Podiatry	Topeka	POD	10
17	T. Gately		POD	14
18	O. Malik, MD Pulmonology	Cotton	PUL	12
19	S. Velloor, MD Physical Med/Rehab	Topeka	REH	15
20	B. Berntsen, MD Surgery	Topeka	SUR	21
21	C. Dunshee, MD Surgery	Topeka	SUR	21
22	D. Cancelada, MD Surgery		SUR	20
23	M. Galliano, DPM Surgery		SUR	5
24	J. Silsby, LSCSW Counseling		SW	By Appt.
25	M. Sands, LSCSW Counseling		SW	By Appt.
26	R. Gronewoller, LSCSW Counseling		SW	By Appt.
27	A. Iloretta, MD Urology	Topeka	URL	10
28	J. Devine, MD Urology	Manhattan	URL	21

General Online Healthcare Resources

Doctors and Dentists--General

[AMA Physician Select: Online Doctor Finder](#) (American Medical Association) [DocFinder](#) (Administrators in Medicine) [Find a Dentist](#) (Academy of General Dentistry) [Find a Dentist: ADA Member Directory](#) (American Dental Association) [Physician Compare](#) (Centers for Medicare & Medicaid Services)

Hospitals and Clinics--General

[Find a Health Center](#) (Health Resources and Services Administration) [Find a Provider: TRICARE Provider Directories](#) (TRICARE Management Activity) [Hospital Quality Compare](#) (Centers for Medicare & Medicaid Services)

Doctors and Dentists--Specialists

[ACOG's Physician Directory](#) (American College of Obstetricians and Gynecologists) [ACR: Geographic Membership Directory](#) (American College of Rheumatology) [American College of Surgeons Membership Directory](#) (American College of Surgeons) [American Osteopathic Association D.O. Database](#) (American Osteopathic Association) [ASGE: Find a Doctor](#) (American Society for Gastrointestinal Endoscopy) [Cancer Genetics Services Directory](#) (National Cancer Institute) [Child and Adolescent Psychiatrist Finder](#) (American Academy of Child and Adolescent Psychiatry) [Dystonia: Find a Health Care Professional](#) (Dystonia Medical Research Foundation) [Expert Locator: Immunologists](#) (Jeffrey Modell Foundation) [Find a Dermatologic Surgeon](#) (American Society for Dermatologic Surgery) [Find a Dermatologist](#) (American Academy of Dermatology) [Find a Gastroenterologist](#) (American College of Gastroenterology) [Find a Gynecologic Oncologist](#) (Society of Gynecologic Oncologists) [Find a Hand Surgeon](#) (American Society for Surgery of the Hand) [Find a Hematologist](#) (American Society of Hematology) [Find a Neurologist](#) (American Academy of Neurology) [Find a Pediatric Dentist](#) (American Academy of Pediatric Dentistry) [Find a Pediatrician or Pediatric Specialist](#) (American Academy of Pediatrics) [Find a Periodontist](#) (American Academy of Periodontology) [Find a Physical Medicine & Rehabilitation Physician](#) (American Academy of Physical Medicine and Rehabilitation) [Find a Plastic Surgeon](#) (American Society of Plastic Surgeons) [Find a Podiatrist](#) (American Podiatric Medical Association) [Find a Thyroid Specialist](#) (American Thyroid Association) [Find a Urologist](#) (American Urological Association) [Find an ACFAS Physician](#) (American College of Foot and Ankle Surgeons) [Find an Allergist/Immunologist: Search](#) (American Academy of Allergy, Asthma, and Immunology) [Find an Endocrinologist](#) (Hormone Health Network) [Find an Eye M.D.](#) (American Academy of Ophthalmology) [Find an Interventional Radiologist](#) (Society of Interventional Radiology) [Find an Oncologist](#) (American Society of Clinical Oncology) [Find an Oral and Maxillofacial Surgeon](#) (American Association of Oral and Maxillofacial Surgeons) [Find an Orthopaedic Foot and Ankle MD](#) (American Orthopaedic Foot and Ankle Society) [Find an Otolaryngologist \(ENT\)](#) (American Academy of Otolaryngology--Head and Neck Surgery) [Finding an Eye Care Professional](#) (National Eye Institute) [GI Locator Service](#) (American Gastroenterological Association)

Other Healthcare Providers

[AMTA's Find a Massage Therapist](#) (American Massage Therapy Association) [Cancer Genetics Services Directory](#) (National Cancer Institute) [Find a Diabetes Educator](#) (American Association of Diabetes Educators) [Find a Genetic Counselor](#) (National Society of Genetic Counselors) [Find a Midwife](#) (American College of Nurse-Midwives) [Find a Nurse Practitioner](#) (American Academy of Nurse Practitioners) [Find a Physical Therapist](#) (American Physical Therapy Association) [Find a Professional: Online Directory of Audiology and Speech-Language Pathology Programs](#) (American Speech-Language-Hearing Association) [Find a Registered Dietitian](#) (Academy of Nutrition and Dietetics) [Find a Therapist](#) (Anxiety Disorders Association of America) [Find an Audiologist](#) (American Academy of Audiology) [Manual Lymphatic Drainage Therapists](#) (National Lymphedema Network) [National Register of Health Service Providers in Psychology](#) (National Register of Health Service Providers in Psychology) [NCCAOM: Find Nationally Certified Practitioners](#) (National Certification Commission for Acupuncture and Oriental Medicine) [Search for an Emergency Contraception Provider in the United States](#) (Princeton University, Office of Population Research)

Hospitals and Clinics--Specialized

[Accredited Birth Centers](#) (Commission for the Accreditation of Birth Centers) [Alzheimer's Disease Research Centers](#) (National Institute on Aging) [Cystic Fibrosis Foundation: Find a Chapter](#) (Cystic Fibrosis Foundation) [Cystic Fibrosis Foundation: Find an Accredited Care Center](#) (Cystic Fibrosis Foundation) [Dialysis Facility Compare](#) (Centers for Medicare & Medicaid Services) [FDA Certified Mammography Facilities](#) (Food and Drug Administration) [Find a Free Clinic](#) (National Association of Free Clinics) [Find an Indian Health Service Facility](#) (Indian Health Service) [Find Treatment Centers](#) (American Cancer Society) [Genetics Clinic Directory Search](#) (University of Washington) [Locate a Sleep Center in the United States by Zip Code](#) (American Academy of Sleep Medicine) [MDA ALS Centers](#) (Muscular Dystrophy Association) [Mental Health Services Locator](#) (Substance Abuse and Mental Health Services Administration) [NCI Designated Cancer Centers](#) (National Cancer Institute) [Neurofibromatosis Specialists](#) (Children's Tumor Foundation) [Post-Polio Directory 2011: Post-Polio Clinics, Health Professionals, Support Groups](#) (Post-Polio Health International including International Ventilator Users Network) [Spina Bifida Clinic Directory](#) (Spina Bifida Association of America) [Substance Abuse Treatment Facility Locator](#) (Substance Abuse and Mental Health Services Administration) [Transplant Center Search Form](#) (BMT InfoNet) [U.S. NMDP Transplant Centers](#) (National Marrow Donor Program) [VA Health Care Facilities Locator & Directory](#) (Veterans Health Administration) [Where to Donate Blood](#) (AABB) [Where to Donate Cord Blood](#) (National Marrow Donor Program)

Other Healthcare Facilities and Services

[Alzheimer's Disease Resource Locator](#) (Fisher Center for Alzheimer's Research Foundation) [American College of Radiology Accredited Facility Search](#) (American College of Radiology) [APA District Branch / State Association Directory](#) (American Psychiatric Association) [Directory of Organizations \(Deafness and Communication Disorders\)](#) (National Institute on Deafness and Other Communication Disorders) [Dog Guide Schools in the United States](#) (American Foundation for the Blind) [Eldercare Locator](#) (Dept. of Health and Human Services) [Find a Hospice or Palliative Care Program](#) (National Hospice and Palliative Care Organization) [Find Services \(for People with Vision Loss\)](#) (American Foundation for the Blind) [Find Urgent Care Centers by State](#) (Urgent Care Association of America) [Genetic Testing Laboratory Directory](#) (University of Washington) [Home Health Compare](#) (Centers for Medicare & Medicaid Services) [Medicare: Helpful Contacts](#) (Centers for Medicare & Medicaid Services) [Muscular Dystrophy Association Clinics and Services](#) (Muscular Dystrophy Association) [National Foster Care and Adoption Directory Search](#) (Children's Bureau) [Nursing Home Compare](#) (Centers for Medicare & Medicaid Services) [Organizations That Offer Support Services](#) (National Cancer Institute) [Poison Control Centers](#) (American Association of Poison Control Centers) [Resources and Information for Parents about Braille](#) (American Foundation for the Blind) [State-Based Physical Activity Program Directory](#) (Centers for Disease Control and Prevention) [TSA Chapters in the USA](#) (Tourette Syndrome Association) [Violence against Women: Resources by State](#) (Dept. of Health and Human Services, Office on Women's Health) [Where to Find Hair Loss Accessories and Breast Cancer Products](#) (American Cancer Society)

SOURCE: MedlinePlus provides links to directories to help you find libraries, health professionals, services and facilities. NLM does not endorse or recommend the organizations that produce these directories, nor the individuals or organizations that are included in the directories.

Pottawatomie County Area Health Services

Emergency Numbers

Police/Sheriff 911

Fire 911

Ambulance 911

Non-Emergency Numbers

Pottawatomie County Sheriff 785-457-3353

Pottawatomie County Ambulance 785-456-9700

Municipal Non-Emergency Numbers

	<u>Police/Sheriff</u>	<u>Fire</u>
Havensville	785-457-3353	
Louisville	785-456-1911	
Manhattan	785-776-3182	
Onaga	785-457-3353	
St. George	785-494-8413	785-456-8553
St. Mary's	785-437-2311	
Wamego	785-456-9553	785-456-1911
Westmoreland	785-457-3353	785-457-3866

To provide updated information or to add new health and medical services to this directory, please contact:

Office of Local Government
K-State Research and Extension
10E Umberger
Manhattan, KS 66506
Phone: (785)-532-2643
Fax: (785)-532-3093

Other Emergency Numbers

Kansas Child/Adult Abuse and Neglect Hotline

1-800-922-5330
www.srskansas.org/hotlines.html

Domestic Violence Hotline

1-800-799-7233
www.ndvh.org

Emergency Management (Topeka)

785-274-1409
www.accesskansas.org/kdem

Federal Bureau of Investigation

1-866-483-5137
www.fbi.gov/congress/congress01/caruso100301.htm

Kansas Arson/Crime Hotline

1-800-KS-CRIME
800-572-1763
www.accesskansas.org/kbi

Kansas Bureau of Investigation (Topeka)

785-296-8200
www.accesskansas.org/kbi

Kansas Crisis Hotline (Domestic Violence/Sexual Assault)

1-888-END-ABUSE
www.kcsdv.org

Kansas Road Conditions

1-866-511-KDOT
511
www.ksdot.org

Poison Control Center

1-800-222-1222
www.aapcc.org

Suicide Prevention Hotline

1-800-SUICIDE
www.hopeline.com
1-800-273-TALK
www.suicidepreventionlifeline.com

Toxic Chemical and Oil Spills

1-800-424-8802
www.epa.gov/region02/contact.htm

Health Services

Hospitals

Community Hospital St. Marys

a division of Community
HealthCare System Inc.
206 S Grand Avenue (St. Marys)
783-437-3734
www.chcsks.org

Community Hospital St. Marys services include:

Acute care
Audiology
Behavioral Health
Diagnostic Imaging
Ear, Nose, Throat
Family practice clinic
Full service emergency room
Home Care
Laboratory
Long-term care
Nutrition Services
Pediatric/Youth Services
Podiatry
Rehabilitative Services (PT,OT, Speech)
Surgical Services
Swing Bed (Skilled Care Program)
Women's Health

Community Hospital Onaga

a division of Community
HealthCare System Inc.
120 W 8th Street (Onaga)
785-889-4272
www.chcsks.org

Community Hospital Onaga services include:

Audiology
Behavioral health care
Cardiology
Childbirth
Diabetic care
Diagnostic imaging
Ear, Nose, & Throat
Emergency department
Family practice
Home care
Laboratory
LifeCare Fitness Center
Nutrition services
Podiatry
Rehabilitation services
Senior care (Assisted Living Facility)

Surgery
Swing Bed (Skilled Care Program)
Women's health
Wound care
Youth services

Wamego City Hospital

711 Genn Drive (Wamego)
785-456-2295
www.wamegocityhospital.com

Wamego City Hospital services include:

Heritage Program for Seniors
Laboratory
Occupational Therapy
Outpatient Specialty Clinic
Physical Therapy
Radiology
Speech Therapy
Surgical Services
Swing Bed Program
Wamego Family Health Care

Health Department

Pottawatomie County Health Department

320 E-Main Street, P.O. Box 310
(Westmoreland)
785-457-3396

Pottawatomie County Health Department services include:

Communicable Disease Prevention
Day Care Licensing
Family Planning Services
Healthy Start Home Visits
Health Hazards Investigation
HIV Testing
Immunizations for Adults and Children
Maternal & Infant Services
Tobacco Prevention
Toenail Clinic
Well Child Physicals

Mental Health

Heritage Program for Senior Adults

Wamego City Hospital
711 Genn Drive (Wamego)
785-456-2295
www.wamegocityhospital.com

Medical Professionals

206 S Grand Avenue (St. Marys)
785-437-3407

Chiropractors

Alternative Health Care (St. Marys)
513 W Bertrand Avenue (St. Marys)
785-321-1700
www.alternativehealthcare.net

Alternative Health Care Center (Wamego)

1511 W US Highway 24 (Wamego)
785-456-2046
www.alternativehealthcare.net

Botz, Thomas E. D.C.
445 E Poyntz Avenue (Manhattan)
785-776-1600
www.botzchiro.net

Dillinger Chiropractic Clinic
426 Lincoln Street (Wamego)
785-456-7167

Fox Chiropractic Clinic
1004 Lincoln Street (Wamego)
785-456-8657

Health Source of Manhattan
930 Hayes Drive, Suite C (Manhattan)
785-587-8989
www.paquettechiropractic.com

Clinics

Onaga Clinic
a division of Community Health
Care System
114 W 8th Street (Onaga)
785-889-4241

Community Health Ministry
903 6th Street (Wamego)
785-456-7872
www.wamegocommunityhealthministry.org

Westmoreland Family Health Clinic
a division Community Healthcare System
304 Main Street (Westmoreland)
785-457-9890

St. Marys Clinic

a division Community
Healthcare System

Cotton O'Neil Clinic-Wamego
1704 Commercial Circle (Wamego)
785-456-2207
www.stormontvail.org

K + Stat Urgent Care
930 Hayes Drive, Suite B (Manhattan)
785-565-0016

St. Marys Clinic
a division of Community
HealthCare System
206 Grand Ave. (St. Marys)
785-437-3734

St. Marys Family Practice PA
532 W Bertrand Avenue (St. Mary's)
785-437-2771
www.drjones.nutrametrix.com

Wamego Family-Health Center
711 Genn
785-456-6288

Dentists

Bates, Steven R. D.D.S.
503 Elm Street, Suite 1 (Wamego)
785-456-2330

McQuillen, John D. D.D.S.
904 5th Street (Wamego)
785-456-9393
www.wamegodentist.com

St. Marys Dental Center
Jay W Hildreth, DDS
310 W Bertrand Avenue (St. Mary's)
785-437-2771
www.stmarysdentalcenter.com

Wamego Dental Center PA
1519 US Highway 24 (Wamego)
785-456-2330

Community Health Ministry – Dental
Clinic
903 6th St Wamego
785-456-7872

Optometrists

Alex's Affordable Eyewear
800 Tuttle Creek Boulevard, Suite C
(Manhattan)
785-565-9009
www.alexsaaffordableeyewear.com

Vision Source

Bettencourt, Mark L. O.D.
930 Hayes Drive (Manhattan)
785-539-2020

Claussen & Kueker Optometrists
115 W 3rd Street (Onaga)
785-889-4387
www.familyeyecenter.net

Family Eye Center of Wamego
631 Lincoln Avenue (Wamego)
785-456-2236
www.familyeyecenter.net

McPeak, Gail H. O.D.
414 Lincoln Avenue, Suite A (Wamego)
785-456-2247

Optical Perspectives
930 Hayes Drive, Suite 9 (Manhattan)
785-539-5105

Verne Claussen O.D.
525 W Bertrand Avenue (St. Mary's)
785-437-2978

Vision Source
1405 W US Highway 24 (Wamego)
785-456-8900
www.optometristswamegokansas.com

Vision Source-Optical Perspectives
400 McCall Road (Manhattan)
785-539-5105

Walmart
101 Bluemont Avenue (Manhattan)
785-776-4897
www.walmart.com

Pharmacies

Hoffman Pharmacy
402 Main Street (Westmoreland)
785-457-3611

The Medicine Shoppe
461 E Poyntz Avenue (Manhattan)
785-539-1717
www.medicineshoppe.com

Onaga Pharmacy
300 Leonard Street (Onaga)
785-889-7181

St. Marys Pharmacy
520 W Bertrand (St. Mary's)
785-437-2967

Wamego Drug Store
501 Lincoln Street (Wamego)
785-456-9292

Physicians and Health Care Providers

Cotton O'Neil Clinic-Wamego
1704 Commercial Circle (Wamego)
785-456-2207
www.stormontvail.org
Jeffrey B. Atwood M.D.
Bradley Cutting MD
Cassie Scriptor MD

James Gregory Vretis D.O.
31181 Highway K18 (Wamego)
785-458-2751

K + Stat Urgent Care
930 Hayes Drive, Suite B (Manhattan)
785-565-0016

Onaga Clinic
a division of Community
HealthCare System
114 W 8th (Onaga)
785-889-4241
Tom Walsh, MD
Marcus Weiser, DO
Nancy Zidek, MD
Nancy Bosse, ARNP
Michele Reisinger, ARNP
Debra Rezac, ARNP

St. Marys Clinic
a division of Community
HealthCare System
206 Grand Ave. (St. Marys)
785-437-3734
Carl Bruce Carroll, MD
Melissa Goulart, DO
John Kelley, MD
Chance Williams, MD
Julia Ingwerson, ARNP

St. Marys Family Practice PA
532 W Bertrand Avenue (St. Mary's)
785-437-2771
David B. Jones M.D.

Wamego City Hospital
711 Genn Drive (Wamego)
785-456-2295
www.wamegocityhospital.com
Roland M. Darey Jr. M.D.
Kathy A. Douglas ARNP-BC
Curtis Wolfe, MD

Westmoreland Family Health Clinic
a division of Community
HealthCare System
304 Main Street (Westmoreland)
785-457-9890
John Kelley, MD
Chance Williams, MD
Nancy Bosse, ARNP

Community Health Ministry –Medical
Clinic
903 6th St Wamego
785-456-7872

Rehabilitation Services

Community Rehab Services
a division of Community
HealthCare System
120 W 8th Street (Onaga)
800-232-8579

Community Rehab Services
a division of Community
HealthCare System
206 S Grand Avenue (St. Marys)
785-437-3768

**Heartland Physical Therapy &
Rehabilitation**
1411 W US Highway 24 (Wamego)
785-456-8899
www.heartlandphysicaltherapy.com

Kaw Valley Physical Therapy
907 E Jesuit Lane (St. Marys)
785-437-2663

Key Rehabilitation
105 E Park Avenue (St. Marys)
785-437-2007

**Maximum Performance Physical
Therapy Fitness**

426 A McCall Road (Manhattan)
785-776-0670
www.maximumperformanceonline.net

**Wamego City Hospital, Physical
Therapy Department**
711 Genn Drive (Wamego)
785-456-7211

Other Health Care Services

Assisted Living/Nursing Homes/TLC

Golden Acres Nursing Center
500 Western Street (Onaga)
785-889-4227

**Good Samaritan Society-Valley
Vista**
2011 Grandview Drive (Wamego)
785-456-9482

Grandview Suites
2103 Grandview Drive (Wamego)
785-456-6692

Redbud Plaza Assisted Living
a division of Community
HealthCare System
205 W 9th Street (Onaga)
785-889-4142

St. Marys Manor
a division of Community
HealthCare System
206 Grand Avenue (St. Marys)
785-437-2286

Vintage Park at Wamego
1607 4th Street (Wamego)
785-456-8997
www.vintageparkwamego.com

Westy Community Care Home, Inc.
105 N Highway 99 (Westmoreland)
785-457-2801

Diabetes

Arriva Medical
1-800-375-5137

Community HomeHealth
a division of Community
HealthCare System
100 W 8th Street (Onaga)
785-889-7200

Diabetes Care Club
1-888-395-6009

Community Hospital Onaga
a division of Community
HealthCare System
120 W 8th Street (Onaga)
785-889-4272
www.chcsks.org

Community Hospital St. Marys
a division of Community
HealthCare System
206 S Grand Avenue (St. Marys)
783-437-3734
www.chcsks.org

Wamego City Hospital
711 Genn Drive (Wamego)
785-456-2295
www.wamegocityhospital.com

Disability Services

American Disability Group
1-877-790-8899

**Big Lakes Developmental Center,
Inc.**
1416 Hayes Drive (Manhattan)
785-776-9201
www.biglakes.org

Kansas Department on Aging
1-800-432-3535
www.agingkansas.org/index.htm

Domestic/Family Violence

Child/Adult Abuse Hotline
1-800-922-5330
www.srskansas.org/services/child_protective_services.htm

**General Information – Women’s
Shelters**
www.WomenShelters.org

Kansas Crisis Hotline
Manhattan

785-539-7935

Pawnee Mental Health Services
1558 Hayes Drive (Manhattan)
785-587-4315
www.pawnee.org

**Sexual Assault/Domestic Violence
Center** (Hutchinson)
Hotline: 1-800-701-3630
Business Line: 620-663-2522

Educational Training Opportunities

**Association of Continuing
Education**
620-792-3218

Family Life Education Center, Inc.
6120 N Highway 99 (Wamego)
785-456-9001

21st Century ED Opportunity CT
420 Lincoln Street (Wamego)
785-456-6276

Food Programs

Kansas Food 4 Life
4 NW25th Road (Great Bend)
620-793-7100

Kansas Food Bank
1919 E Douglas (Wichita)
316-265-4421
www.kansasfoodbank.org

Community Health Ministry – Food
903 6th St Wamego
785-456-7872

Harvestor Truck – monthly to
communities

Government Healthcare

**Kansas Department on Aging
(KDOA)**
503 South Kansas Avenue (Topeka)
785-296-4986 or 1-800-432-3535
www.agingkansas.org/

**Kansas Department of Health and
Environment (KDHE)**
Curtis State Office Building

1000 South West Jackson (Topeka)
785-296-1500
www.kdheks.gov/contact.html

MEDICAID

Bureau of Family Services
2709 Amherst Ave
Manhattan KS
785-776-4011

Health and Fitness Centers

Balderson Fitness Center

400 Work Tool Road (Wamego)
785-456-9559

Bodies in Motion Fitness & Dance

17680 Old Post Road (Wamego)
785-456-9177

Curves

8819 E US Highway 24 (Manhattan)
785-587-8080
www.curves.com

Maximum Performance Physical Therapy & Fitness

426 McCall Road (Manhattan)
785-776-0670
www.maximumperformanceonline.net

LifeCare Fitness Center

a division of Community
HealthCare System
120 W 8th Street (Onaga)
785-889-4256

Onaga Weightlifting Club, Inc.

319 E 4th Street (Onaga)
785-889-4363

Wamego Athletic Club

1409 W US Highway 24 (Wamego)
785-456-2992

Wamego City Hospital

711 Genn Drive (Wamego)
785-456-2295

Home Health

Community HomeHealth

a division of Community
HealthCare System
100 W 8th Street (Onaga)
785-889-7200

PRN Home Health & Hospice

1010 Lincoln Street (Wamego)
785-456-7764
www.prnhomehealthhospice.com

Community HomeHealth

a division of Community
HealthCare System
206 Grand Ave. (St. Marys)
785-437-3768

Hospice

PRN Home Health & Hospice

1010 Lincoln Street (Wamego)
785-456-7764
www.prnhomehealthhospice.com

Massage Therapy

Body Works-Massage Therapy

905 5th Street (Wamego)
785-456-9954
www.bodyworksmassagetherapywamego.com

Botz, Thomas E. D.C.

445 E Poyntz Avenue (Manhattan)
785-776-1600
www.botzchiro.net

Dillinger Chiropractic Clinic

426 Lincoln Street (Wamego)
785-456-7167

Essentials

312 Tuttle Creek Boulevard, Suite B
(Manhattan)
785-776-6066
www.salonessentials.biz

Head First Salon

505 Elm Street, Suite B (Wamego)
785-456-1322

Maximum Performance Physical Therapy & Fitness

426 McCall Road (Manhattan)
785-776-0670
www.maximumperformanceonline.net

Rock On Massage

720 High Street (Onaga)

785-889-4837
www.inyanretreat.com

Trisha's Studio 24
8837 E US Highway 24 (Manhattan)
785-537-2726

Tsubo Solutions Massage Therapy
314 Tuttle Creek Boulevard, Suite F
(Manhattan)
785-539-1325
www.tsubosolutions.com

Medical Equipment and Supplies

American Medical Sales and Repair
1-866-637-6803

Breathe Easy Respiratory Services
1700 Hayes Drive (Manhattan)
785-537-3373

Hoffman Pharmacy
403 Main Street (Westmoreland)
785-457-3611

The Medicine Shoppe
461 E Poyntz Avenue (Manhattan)
785-539-1717
www.medicineshoppe.com

Starr Medical Supply
303 Lincoln (Wamego)
785-456-7827
www.kansasmedicalsupply.com

St. Marys Pharmacy
520 W Bertrand (St. Marys)
785-437-2967

Community HomeCare Equipment
a division of Community HealthCare
System
120 West 8th Street (Onaga)
785-889-4272 ext. 1152
206 Grand Avenue (St. Marys)
785-437-3407

School Nurses

USD 320 Wamego
510 E Highway 24 (Wamego)
785-456-7643

Central Elementary
785-456-7271
West Elementary
785-456-8333
Wamego Middle School
785-456-7682
Wamego High School
785-456-2214

USD 321 Kaw Valley
411 W Lasley (St. Mary's)
785-437-2254
St. Mary's Grade School
785-437-6159
St. Mary's Jr./Sr. High School
785-437-6257

USD 322 Onaga
500 High Street, P.O. Box 60 (Onaga)
785-889-4614
Onaga Grade School
785-889-7101
Onaga High School
785-889-4251

USD 323 Rock Creek
201 S 3rd Street, P.O. Box 70
(Westmoreland)
785-457-3732
Westmoreland Elementary
785-457-3462
St. George Elementary
785-494-2482
Rock Creek Jr./Sr. High School
785-457-3688

USD 384 Blue Valley
3 Ram Way, P.O. Box 98 (Randolph)
785-293-5256
Olsburg Elementary
785-468-3551
Randolph Middle School
785-293-5253
Blue Valley High School
785-293-5255

Senior Services

Homestead Senior Residences
1008 Kaw Valley Park Circle (Wamego)
785-456-2260

Onaga Senior Center
200 Bypass Road (Onaga)
785-889-4402

RedBud Plaza Assisted Living Facility

a division of Community HealthCare System
205 W. 9th Street (Onaga)
785-889-4142

St. Marys Senior Center

403 W Lasley Street (St. Marys)
785-321-1225

Wamego Senior Center
501 Ash Wamego
785-456-

L&L Assessment & Counseling

5245 N Highway 99 (Wamego)
785-456-2778

Pawnee Mental Health Services

1558 Hayes Drive (Manhattan)
785-587-4315
www.pawnee.org

Road Less Traveled

1-866-486-1812

Seabrook House

1-800-579-0377

The Treatment Center

1-888-433-9869

Local Government, Community, and Social Services

Adult Protection

Adult Protective Services (SRS)

1-800-922-5330
www.srskansas.org/ISD/ees/adult.htm

Elder Abuse Hotline

1-800-842-0078
www.elderabusecenter.org

Kansas Department of Social and Rehabilitation Services West Region Protection Reporting Center
1-800-922-5330

Child Protection

Big Lakes Developmental Center, Inc.

1416 Hayes Drive (Manhattan)
785-776-9201
www.biglakes.org

Kansas Department of Social and Rehabilitation Services West Region Protection Reporting Center – i.e. PROTECTION REPORT CENTER FOR ABUSE

1-800-922-5330
Available 24 hours/7 days per week – including holidays

Alcohol and Drug Treatment

Alcohol A 24-Hour Able Helpline & Addiction Treatment
1-800-505-0964

Alcohol and Drug Abuse Services
1-800-586-3690
http://www.srskansas.org/services/alc-drug_assess.htm

Alcohol Detoxification 24-Hour Helpline
1-877-403-3387
www.ACenterForRecovery.com

Center for Recovery
1-877-403-6236

G&G Addiction Treatment Center
1-866-439-1807

Children and Youth

Children's Alliance
627 SW Topeka Boulevard (Topeka)
785-235-5437
www.childally.org

Kansas Children's Service League
1-800-332-6378
www.kcsl.org

Community Centers

Havensville Community Center
901 Commercial Street (Havensville)
785-948-2200

The Olsburg Library
318 2nd Street (Olsburg)
785-468-3347

Onaga City Public Library

313 Leonard Street (Onaga)
785-889-4531

Onaga Community Center

100 Union Pacific Drive (Onaga)
785-889-7164

**Pottawatomie/Wabaunsee
Regional Library**

306 N 5th Street (St. Mary's)
785-437-2778
315 Main Street (Westmoreland)
785-457-2841

Pennyland Park

Walnut Street & 8th Street (Wamego)

Railroad Park

4th Street & Lincoln Street (Wamego)

Riverfront Park

Valley Street & Lincoln Street (Wamego)

St. Marys Senior Center

403 W Lasley Street (St. Marys)
785-321-1225

Wamego City Park

4th Street & Ash Street (Wamego)

Wamego Recreation Complex

US Highway 24 & Balderson Boulevard
(Wamego)

Wamego Public Library

431 Lincoln Street (Wamego)
785-456-9181
www.wamegopubliclibrary.com

Westmoreland City/Legion Park

200 Main Street (Westmoreland)

Westmoreland City Pool

613 E Campbell Street (Westmoreland)
785-457-3361

~~**Westmoreland City Public Library**~~

Crime Prevention

Crime Stoppers

1001 S Seth Child Road (Manhattan)
785-539-7777

Day Care Providers – Adult

Advocare Home Specialty Care

1004 Lincoln Street (Wamego)
785-456-8910
www.advocarehomecare.com

Golden Acres Nursing Center

500 Western Street (Onaga)
785-889-4227

Vista

Good Samaritan Society-Valley

2011 Grandview Drive (Wamego)
785-456-9482

Grandview Suites

2103 Grandview Drive (Wamego)
785-456-6692

PRN Home Health & Hospice

1010 Lincoln Street (Wamego)
785-456-7764
www.prnhomehealthhospice.com

Redbud Plaza

a division of Community
HealthCare System
205 W 9th Street (Onaga)
785-889-4142

St. Marys Manor

a division of Community
HealthCare System
206 Grand Ave. (St. Marys)
785-437-2286

Vintage Park at Wamego

1607 4th Street (Wamego)
785-456-8997
www.vintageparkwamego.com

Westy Community Care Home, Inc.

105 N Highway 99 (Westmoreland)
785-457-2801

NEK-CAP Early Head Start

714 Plum Street (Wamego)
785-456-6703
www.nekcap.org

NEK-CAP Onaga Head Start

817 Leonard Street (Onaga)
785-889-4722
www.nekcap.org

**Pottawatomie/Wabaunsee Infant
Toddler Program**

1911 6th Street (Wamego)
785-456-7366

Extension Office

Pottawatomie County Extension Office

612 Campbell, P.O. Box 612
(Westmoreland)
785-457-3319

Funeral Homes

Campanella Evans Mortuary

612 W US Highway 24 (Wamego)
785-456-9811
www.campanellafuneral.com

Chapel Oaks Funeral Home

218 Leonard Street (Onaga)
785-889-7171
www.chapeloaksfuneralhome.com

Kufahl Funeral Home

307 Center Road (Wheaton)
785-396-4454
www.campanellafuneral.com

Piper Funeral Home

714 W Maple Street (St. Mary's)
785-437-2222
www.piperfuneralhome.com

Stewart Funeral Home

905 5th Street (Wamego)
785-456-2233
www.stewartfuneralhomes.com

Head Start

NEK-CAP Early Head Start

714 Plum Street (Wamego)
785-456-6703
www.nekcap.org

NEK-CAP Onaga Head Start

817 Leonard Street (Onaga)
785-889-4722
www.nekcap.org

Housing

Onaga Housing Authority

840 Clifton Street (Onaga)
785-889-4616

St. Mary's Housing Authority

607 Elm Street (St. Mary's)
785-437-6678

Wamego Housing Authority

1201 Chrysler Drive (Wamego)
785-456-7675

Westmoreland Housing Authority

605 E State Street (Westmoreland)
785-457-3489

Legal Services

Etzel, Chris Attorney At Law

307 Leonard Street (Onaga)
785-889-4192

Lang, John E.

405 Lincoln Street (Wamego)
785-456-9826

Lange, Ben Law Office

503 Elm Street (Wamego)
785-456-6740

Morrison Frost Olsen & Irvine LLP

602 W Bertrand Avenue (St. Mary's)
785-437-2392
www.mfoilaw.com

Olsen, Vivien Attorney At Law

117 S 6th Street (St. Mary's)
785-437-2777

Paulsen, Deborah

212 Leonard Street (Onaga)
785-889-4660

Pugh, Jacob R. Attorney Office

625 Lincoln Street (Wamego)
785-456-9377
www.pughlaw.net

Rebecca R. Rookstool Attorney At Law

108 N 2nd Street
Westmoreland
785-457-0110

Redler, Robert S. Attorney
511 W Bertrand Avenue (St. Mary's)
785-437-2680

Travis Bail Bonds
5990 Flush Road (St. George)
785-494-2096

Watt, John W.
815 5th Street, Suite B (Wamego)
785-456-2231

Libraries, Parks and Recreation

Havensville Community Center
901 Commercial Street (Havensville)
785-948-2200

The Olsburg Library
318 2nd Street (Olsburg)
785-468-3347

Onaga City Public Library
313 Leonard Street (Onaga)
785-889-4531

Onaga Community Center
100 Union Pacific Drive (Onaga)
785-889-7164

Onaga Swimming Pool
9th Street & High Street (Onaga)

**Pottawatomie/Wabaunsee
Regional Library**
306 N 5th Street (St. Mary's)
785-437-2778

Pennyland Park
Walnut Street & 8th Street (Wamego)

Railroad Park
4th Street & Lincoln Street (Wamego)

Riverfront Park
Valley Street & Lincoln Street (Wamego)

St. Marys Senior Center
403 W Lasley Street (St. Mary's)
785-321-1225

Wamego City Park
4th Street & Ash Street (Wamego)

Wamego Recreation Complex
US Highway 24 & Balderson Boulevard
(Wamego)

Wamego Public Library
431 Lincoln Street (Wamego)
785-456-9181
www.wamegopubliclibrary.com

Westmoreland City/Legion Park
200 Main Street (Westmoreland)

Westmoreland City Pool
613 E Campbell Street (Westmoreland)
785-457-3361

Westmoreland City Public Library
315 Main Street (Westmoreland)
785-457-2841

Pregnancy Services

Adoption is a Choice
1-877-524-5614

Adoption Network
1-888-281-8054

Adoption Spacebook
1-866-881-4376

Graceful Adoptions
1-888-896-7787

Kansas Children's Service League
1-877-530-5275
www.kcsl.org

Public Information

Clerk of Pottawatomie County
207 N 1st Street (Westmoreland)
785-457-3314

Onaga Chamber of Commerce
319 Prospect Street (Onaga)
785-889-4250

Onaga City Hall
319 Prospect Street (Onaga)
785-889-4456

St. Marys Chamber of Commerce
702 W Bertrand (St. Mary's)
785-437-2077

St. Marys City Hall
200 S 7th Street (St. Mary's)
785-437-2311

Wamego Chamber of Commerce
529 Lincoln Street (Wamego)
785-456-7849

Wamego City Hall
430 Lincoln Avenue (Wamego)
785-456-9119

Westmoreland City Hall
202 Main Street (Westmoreland)
785-457-3361

Rape

Domestic Violence and Rape Hotline
1-888-874-1499

Family Crisis Center
1806 12th Street (Great Bend)
620-793-1885

Kansas Crisis Hotline
Manhattan
785-539-7935
1-800-727-2785

Red Cross

American Red Cross
514 Poplar Street (Wamego)
785-456-9773
www.redcross.org

Social Security

Social Security Administration
1-800-772-1213
1-800-325-0778
www.ssa.gov

Transportation

Pottawatomie County Public Transportation
207 N 1st Street, P.O. Box 187
(Westmoreland)
877-728-0433

ATA Bus – St George Area
877-551-6345

State and National Information, Services, Support

Adult Protection

Adult Protection Services
1-800-922-5330
www.srskansas.org/SD/ees/adult.htm

Domestic Violence and Sexual Assault (DVACK)
1-800-874-1499
www.dvack.org

Elder Abuse Hotline
1-800-842-0078
www.elderabusecenter.org

Elder and Nursing Home Abuse Legal
www.resource4nursinghomeabuse.com/index.html

Kansas Coalition Against Sexual and Domestic Violence
1-888-END-ABUSE (363-2287)
www.kcsdv.org/ksresources.html

Kansas Department on Aging Adult Care Complaint Program
1-800-842-0078

National Center on Elder Abuse
(Administration on Aging)
www.ncea.gov/NCEARoot/Main_Site?Find_Help/Help_Hotline.aspx

National Domestic Violence Hotline
1-800-799-SAFE (799-7233)
1-800-787-3224 (TTY)
www.ndvh.org

National Sexual Assault Hotline
1-800-994-9662
1-888-220-5416 (TTY)
www.4woman.gov/faq/sexualassault.htm

National Suicide Prevention Lifeline
1-800-273-8255

Poison Center
1-800-222-1222

Sexual Assault and Domestic Violence Crisis Line
1-800-701-3630

Social and Rehabilitation Services (SRS)

1-888-369-4777 (HAYS)
www.srskansas.org

Suicide Prevention Helpline
785-841-2345

Alcohol and Drug Treatment Programs

A 1 A Detox Treatment
1-800-757-0771

AAAAAH
1-800-993-3869

Abandon Addiction
1-800-405-4810

Able Detox-Rehab Treatment
1-800-577-2481 (NATIONAL)

Abuse Addiction Agency
1-800-861-1768
www.thewatershed.com

AIC (Assessment Information Classes)
1-888-764-5510

Al-Anon Family Group
1-888-4AL-ANON (425-2666)
www.al-anon.alateen.org

Alcohol and Drug Abuse Hotline
1-800-ALCOHOL

Alcohol and Drug Abuse Services
1-800-586-3690
www.srskansas.org/services/alc-drug_assess.htm

Alcohol and Drug Addiction Treatment Programs
1-800-510-9435

Alcohol and Drug Helpline
1-800-821-4357

Alcoholism/Drug Addiction Treatment Center
1-800-477-3447

Kansas Alcohol and Drug Abuse Services Hotline
1-800-586-3690
www.srskansas.org/services/alc-drug_assess.htm

Mothers Against Drunk Driving
1-800-GET-MADD (438-6233)
www.madd.org

National Council on Alcoholism and Drug Dependence, Inc.
1-800-NCA-CALL (622-2255)
www.ncadd.org

Recovery Connection
www.recoveryconnection.org

Regional Prevention Centers of Kansas
1-800-757-2180
www.smokyhillfoundation.com/rpc-locate.html

Better Business Bureau

Better Business Bureau
328 Laura (Wichita)
316-263-3146
www.wichita.bbb.org

Children and Youth

Adoption
1-800-862-3678
www.adopt.org/

Boys and Girls Town National Hotline
1-800-448-3000
www.girlsandboystown.org

Child/Adult Abuse and Neglect Hotline
1-800-922-5330
www.srskansas.org/

Child Abuse Hotline
1-800-922-5330

Child Abuse National Hotline
1-800-422-4453
1-800-222-4453 (TDD)
www.childhelpusa.org/home

Child Find of America
1-800-426-5678

Child Help USA National Child Abuse Hotline
1-800-422-4453

Child Protective Services
1-800-922-5330
www.srskansas.org/services/child_protective_services.htm

Health Wave
P.O. Box 3599
Topeka, KS 66601
1-800-792-4884
1-800-792-4292 (TTY)
www.kansashealthwave.org

Heartspring (Institute of Logopedics)
8700 E. 29TH N
Wichita, KS 67226
www.heartspring.org

Kansas Big Brothers/Big Sisters
1-888-KS4-BIGS
www.ksbbbs.org

Kansas Children's Service League
1-877-530-5275
www.kcsl.org

Kansas Department of Health and Environment
785-296-1500
www.kdheks.gov
e-mail: info@kdheks.gov

Kansas Society for Crippled Children
106 W. Douglas, Suite 900
Wichita, KS 67202
1-800-624-4530
316-262-4676
www.kssociety.org

National Runaway Switchboard
1-800-RUNAWAY
www.1800runaway.org/

National Society for Missing and Exploited Children
1-800-THE-LOST (843-5678)
www.missingkids.com

Parents Anonymous Help Line
1-800-345-5044
www.parentsanonymous.org/paIndex10.html

Runaway Line
1-800-621-4000
1-800-621-0394 (TDD)
www.1800runaway.org/

Talking Books
1-800-362-0699
www.skyways.lib.ks.us/KSL/talking/ksl_bph.html

Community Action

Peace Corps
1-800-424-8580
www.peacecorps.gov

Public Affairs Hotline (Kansas Corporation Commission)
1-800-662-0027
www.kcc.state.ks.us

Counseling

Care Counseling
Family counseling services for Kansas and Missouri
1-888-999-2196

Carl Feril Counseling
608 N Exchange (St. John)
620-549-6411

Castlewood Treatment Center for Eating Disorders
1-888-822-8938
www.castlewoodtc.com

Catholic Charities
1-888-468-6909
www.catholiccharitiessalina.org

Center for Counseling
5815 W Broadway (Great Bend)
1-800-875-2544

Central Kansas Mental Health Center
1-800-794-8281
Will roll over after hours to a crisis number.

Consumer Credit Counseling Services
1-800-279-2227
www.kscgccs.org/

Kansas Problem Gambling Hotline
1-866-662-3800

www.ksmhc.org/Services/gambling.htm

National Hopeline Network
1-800-SUICIDE (785-2433)
www.hopeline.com

National Problem Gambling Hotline
1-800-552-4700
www.npgaw.org

Samaritan Counseling Center
1602 N. Main Street
Hutchinson, KS 67501
620-662-7835
<http://cmc.pdswebpro.com/>

Self-Help Network of Kansas
1-800-445-0116
www.selfhelpnetwork.wichita.edu

Senior Health Insurance Counseling
1-800-860-5260
www.agingkansas.org

Sunflower Family Services, Inc.
(adoption, crisis pregnancy, conflict solution center)
1-877-457-5437
www.sunflowerfamily.org

Disability Services

American Association of People with Disabilities (AAPD)
www.aapd.com

American Council for the Blind
1-800-424-8666
www.acb.org

Americans with Disabilities Act Information Hotline
1-800-514-0301
1-800-514-0383 (TTY)
www.ada.gov

Disability Advocates of Kansas, Incorporated
1-866-529-3824
www.disabilitysecrets.com

Disability Group, Incorporated
1-888-236-3348
www.disabilitygroup.com

Disability Rights Center of Kansas (DRC)

Formerly Kansas Advocacy & Protective Services
1-877-776-1541
1-877-335-3725 (TTY)
www.drckansas.org

Hearing Healthcare Associates
1-800-448-0215

Kansas Commission for the Deaf and Hearing Impaired
1-800-432-0698
www.srskansas.org/kcdhh

Kansas Relay Center (Hearing Impaired service)
1-800-766-3777
www.kansasrelay.com

National Center for Learning Disabilities
1-888-575-7373
www.nclld.org

National Library Services for Blind & Physically Handicapped
www.loc.gov/nls/
1-800-424-8567

Parmele Law Firm
8623 E 32nd Street N, Suite 100
(Wichita)
1-877-267-6300

Environment

Environmental Protection Agency
1-800-223-0425
913-321-9516 (TTY)
www.epa.gov

Kansas Department of Health and Environment
Salina 785-827-9639
Hays 785-625-5663
Topeka 785-296-1500
www.kdheks.gov

Food and Drug

Center for Food Safety and Applied Nutrition
1-888-SAFEFOOD (723-3366)
www.cfsan.fda.gov/
www.healthfinder.gov/docs/doc03647.htm

US Consumer Product Safety Commission

1-800-638-2772
1-800-638-8270 (TDD)
www.cpsc.gov

USDA Meat and Poultry Hotline

1-888-674-6854
1-800-256-7072 (TTY)
www.fsis.usda.gov/

U.S. Food and Drug Administration

1-888-INFO-FDA
1-888-463-6332
www.fsis.usda.gov/

Poison Hotline

1-800-222-1222

Health Services

American Cancer Society

1-800-227-2345
www.cancer.org

American Diabetes Association

1-800-DIABETES (342-2383)
www.diabetes.org

AIDS/HIV Center for Disease Control and Prevention

1-800-CDC-INFO
1-888-232-6348 (TTY)
www.cdc.gov/hiv/

AIDS/STD National Hot Line

1-800-342-AIDS
1-800-227-8922 (STD line)

American Health Assistance Foundation

1-800-437-2423
www.ahaf.org

American Heart Association

1-800-242-8721
www.americanheart.org

American Lung Association

1-800-586-4872

American Stroke Association

1-888-4-STROKE
www.americanheart.org

Center for Disease Control and Prevention

1-800-CDC-INFO
1-888-232-6348 (TTY)
www.cdc.gov/hiv/

Elder Care Helpline

www.eldercarelink.com

Eye Care Council

1-800-960-EYES
www.seetolearn.com

Kansas Foundation for Medical Care

1-800-432-0407
www.kfmc.org

National Health Information Center

1-800-336-4797
www.health.gov/nhic

National Cancer Information Center

1-800-227-2345
1-866-228-4327 (TTY)
www.cancer.org

National Institute on Deafness and Other Communication Disorders Information

Clearinghouse
1-800-241-1044
1-800-241-1055 (TTY)
www.nidcd.nih.gov

Hospice

Hospice-Kansas Association

1-800-767-4965

Kansas Hospice and Palliative Care Organization

1-888-202-5433
www.lifeproject.org/akh.htm

Southwind Hospice, Incorporated

www.southwindhospice.com
785-483-3161

Housing

Kansas Housing Resources Corporation

785-296-2065
www.housingcorp.org

US Department of Housing and Urban Development
Kansas Regional Office
913-551-5462

1-877-486-2048 (TTY)
www.cms.hhs.gov

Legal Services

Kansas Attorney General
1-800-432-2310 (Consumer Protection)
1-800-828-9745 (Crime Victims' Rights)
1-800-766-3777 (TTY)
www.ksag.org/

Kansas Bar Association
785-234-5696
www.ksbar.org

Kansas Department on Aging
1-800-432-3535
www.agingkansas.org/index.htm

Kansas Legal Services
1-800-723-6953
www.kansaslegalservices.org

North Central-Flint Hills Area Agency on Aging
401 Houston (Manhattan)
1-800-432-2703
www.ncfhaaa.com

Medicaid Services

First Guard
1-888-828-5698
www.firstguard.com

Kansas Health Wave
1-800-792-4884 or 1-800-792-4292 (TTY)
www.kansashealthwave.org

Kansas Medical Assistance Program
Customer Service
1-800-766-9012
www.kmpa-state-ks.us/

Medicare Information
1-800-MEDICARE
www.medicare.gov

U.S. Department of Health and Human Services
Centers for Medicare and Medicaid Services
1-800-MEDICARE (1-800-633-4227) or

Mental Health Services

Alzheimer's Association
1-800-272-3900 or 1-866-403-3073 (TTY)
www.alz.org

Developmental Services of Northwest Kansas
1-800-637-2229

Kansas Alliance for Mentally Ill
(Topeka, KS)
785-233-0755
www.namikansas.org

Make a Difference
1-800-332-6262

Mental Health America
1-800-969-6MHA (969-6642)

National Alliance for the Mentally Ill Helpline
1-800-950-NAMI (950-6264) or 703-516-7227 (TTY)
www.nami.org

National Institute of Mental Health
1-866-615-6464 or 1-866-415-8051 (TTY)
www.nimh.nih.gov

National Library Services for Blind and Physically Handicapped
1-800-424-8567
www.loc.gov/nls/music/index.html

National Mental Health Association
1-800-969-6642
1-800-433-5959 (TTY)
www.nmha.org

Pawnee Mental Health

State Mental Health Agency
KS Department of Social and Rehabilitation Services
915 SW Harrison Street
Topeka, KS 66612
785-296-3959
www.srskansas.org

Suicide Prevention Hotline
1-800-SUICIDE [784-2433]

www.hopeline.com

Nutrition

American Dietetic Association

1-800-877-1600
www.eatright.org

American Dietetic Association Consumer Nutrition Hotline

1-800-366-1655

Department of Human Nutrition

Kansas State University
119 Justin Hall
Manhattan, KS 66506
785-532-5500
www.humec.k-state.edu/hn/

Eating Disorders Awareness and Prevention

1-800-931-2237
www.nationaleatingdisorders.org

Food Stamps

Kansas Department of Social and
Rehabilitation Services (SRS)
1-888-369-4777 or Local SRS office
www.srskansas.org/ISD/ees/food_stamps.htm

Kansas Department of Health and Environment

1000 SW Jackson, Suite 220
Topeka, KS 66612
785-296-1320
www.kdheks.gov/news-wic/index.html

Road and Weather Conditions

Kansas Road Conditions

1-866-511-KDOT
511
www.ksdot.org

Senior Services

Alzheimer's Association

1-800-487-2585

American Association of Retired Persons (AARP)

1-888-OUR-AARP (687-2277)
www.aarp.org

Americans with Disabilities Act Information Line

1-800-514-0301 or 1-800-514-0383
[TTY]
www.usdoj.gov/crt/ada

American Association of Retired Persons

1-888-687-2277
www.aarp.org

Area Agency on Aging

1-800-432-2703

Eldercare Locator

1-800-677-1116
www.eldercare.gov/eldercare/public/home.asp

Home Buddy

1-866-922-8339
www.homebuddy.org

Home Health Complaints

Kansas Department of Social and
Rehabilitation Services (SRS)
1-800-842-0078

Kansas Advocates for Better Care Inc.

Consumer Information
1-800-525-1782
www.kabc.org

Kansas Department on Aging

1-800-432-3535 or 785-291-3167 (TTY)
www.agingkansas.org/index.htm

Kansas Foundation for Medical Care, Inc.

Medicare Beneficiary Information
1-800-432-0407

Kansas Tobacco Use Quitline

1-866-KAN-STOP (526-7867)
www.kdheks.gov/tobacco/cessation.html

Older Kansans Employment Programs (OKEP)

785-296-7842
www.kansascommerce.com

Older Kansans Hotline

1-800-742-9531

Older Kansans Information Reference Sources on Aging (OKIRSA)

1-800-432-3535

**Senior Health Insurance
Counseling for Kansas**
1-800-860-5260
www.agingkansas.org/SHICK/shick_index.html

SHICK
1-800-860-5260
www.agingkansas.org/SHICK

Social Security Administration
785-296-3959 or 785-296-1491 (TTY)
www.srskansas.org

SRS Rehabilitation Services Kansas
785-296-3959
785-296-1491 (TTY)
www.srskansas.org

Suicide Prevention

Suicide Prevention Services
1-800-784-2433
www.spsfv.org

Veterans

Federal Information Center
1-800-333-4636
www.FirstGov.gov

U.S. Department of Veterans Affairs
1-800-513-7731
www.kcva.org

Education (GI Bill)
1-888-442-4551

Health Resource Center
1-877-222-8387

Insurance Center
1-800-669-8477

**Veteran Special Issue Help
Line**
Includes Gulf War/Agent
Orange Helpline
1-800-749-8387

U.S. Department of Veterans Affairs

Mammography Helpline
1-888-492-7844

Other Benefits

1-800-827-1000

Memorial Program Service
[includes status of headstones
and markers]
1-800-697-6947

**Telecommunications Device
for the Deaf/Hearing
Impaired**
1-800-829-4833 (TTY)
www.vba.va.gov

Veterans Administration

Veterans Administration Benefits
1-800-669-8477

Life Insurance
1-800-669-8477

Education (GI Bill)
1-888-442-4551

Health Care Benefits
1-877-222-8387

**Income Verification and
Means Testing**
1-800-929-8387

Mammography Helpline
1-888-492-7844

**Gulf War/Agent Orange
Helpline**

1-800-749-8387

**Status of Headstones and
Markers**

1-800-697-6947

**Telecommunications Device
for the Deaf**
1-800-829-4833
www.vba.va.gov

**Benefits Information and
Assistance**
1-800-827-1000

Debt Management
1-800-827-0648

**Life Insurance Information and
Service**
1-800-669-8477

Welfare Fraud Hotline

Welfare Fraud Hotline
1-800-432-3913

V. Detail Exhibits

[VVV Research & Development INC]

Patient Origin & Access

[VVV Research & Development INC]



Community HealthCare System, Inc. - Onaga, KS

PO101E-2009
Annual

Discharges by Major Service, Age, and Patient County of Residence

County	Total Discharges		Pediatric		Age 18 - 44		Age 45 - 64		Age 65 - 74		Age 75 +		Psychiatric		Obstetric		Newborn		Surg Pct
	Cases	Pct	Cases	Pct	Cases	Pct	Cases	Pct	Cases	Pct	Cases	Pct	Cases	Pct	Cases	Pct	Cases	Pct	
Pottawatomie, KS	384	43.6	12	3.1	15	3.9	58	15.1	22	5.7	184	47.9	1	0.3	52	13.5	40	10.4	11.2
Jackson, KS	249	28.3	8	3.2	12	4.8	37	14.9	44	17.7	87	34.9	2	0.8	35	14.1	24	9.6	13.7
Nemaha, KS	101	11.5	3	3.0	1	1.0	7	6.9	6	5.9	37	36.6	0		26	25.7	21	20.8	11.9
Marshall, KS	89	10.1	3	3.4	2	2.2	4	4.5	17	19.1	39	43.8	1	1.1	13	14.6	10	11.2	4.5
Shawnee, KS	19	2.2	0		2	10.5	0		2	10.5	6	31.6	0		6	31.6	3	15.8	15.8
Brown, KS	13	1.5	0		0		2	15.4	0		0		0		7	53.8	4	30.8	61.5
Riley, KS	6	0.7	0		0		1	16.7	0		0		0		3	50.0	2	33.3	33.3
Wabaunsee, KS	6	0.7	1	16.7	1	16.7	0		0		2	33.3	0		1	16.7	1	16.7	16.7
Washington, KS	6	0.7	0		3	50.0	0		0		0		0		2	33.3	1	16.7	33.3
Other Counties	8	0.9	0		0		2	25.0	0		3	37.5	0		2	25.0	1	12.5	12.5
Hospital Total	881	100.0	27	3.1	36	4.1	111	12.6	91	10.3	358	40.6	4	0.5	147	16.7	107	12.1	12.4



Community HealthCare System, Inc. - Onaga, KS

PO101E-2010
Annual

Discharges by Major Service, Age, and Patient County of Residence

County	Total Discharges		Pediatric		Age 18 - 44		Age 45 - 64		Age 65 - 74		Age 75 +		Psychiatric		Obstetric		Newborn		Surg Pct
	Cases	Pct	Cases	Pct	Cases	Pct	Cases	Pct	Cases	Pct	Cases	Pct	Cases	Pct	Cases	Pct	Cases	Pct	
Pottawatomie, KS	387	45.8	17	4.4	16	4.1	42	10.9	35	9.0	173	44.7	0		60	15.5	44	11.4	3.9
Jackson, KS	207	24.5	3	1.4	8	3.9	38	18.4	47	22.7	63	30.4	2	1.0	26	12.6	20	9.7	7.7
Marshall, KS	110	13.0	6	5.5	2	1.8	17	15.5	13	11.8	37	33.6	0		18	16.4	17	15.5	4.5
Nemaha, KS	109	12.9	1	0.9	0		11	10.1	11	10.1	48	44.0	1	0.9	22	20.2	15	13.8	11.0
Shawnee, KS	13	1.5	1	7.7	0		0		0		0		0		7	53.8	5	38.5	46.2
Texas Unknown County	6	0.7	0		0		6	100.0	0		0		0		0		0	0	
Other Counties	13	1.5	0		1	7.7	0		0		3	23.1	0		6	46.2	3	23.1	15.4
Hospital Total	845	100.0	28	3.3	27	3.2	114	13.5	106	12.5	324	38.3	3	0.4	139	16.4	104	12.3	6.6



Community HealthCare System, Inc. - Onaga, KS

PO101E-2011
Annual

Discharges by Major Service, Age, and Patient County of Residence

County	Total Discharges		Pediatric		Age 18 - 44		Age 45 - 64		Age 65 - 74		Age 75 +		Psychiatric		Obstetric		Newborn		Surg Pct
	Cases	Pct	Cases	Pct	Cases	Pct	Cases	Pct	Cases	Pct	Cases	Pct	Cases	Pct	Cases	Pct	Cases	Pct	
Pottawatomie, KS	356	47.2	17	4.8	15	4.2	31	8.7	46	12.9	145	40.7	4	1.1	58	16.3	40	11.2	8.7
Jackson, KS	201	26.7	9	4.5	8	4.0	28	13.9	30	14.9	78	38.8	0		31	15.4	17	8.5	10.9
Marshall, KS	87	11.5	2	2.3	3	3.4	15	17.2	6	6.9	49	56.3	1	1.1	7	8.0	4	4.6	6.9
Nemaha, KS	77	10.2	10	13.0	1	1.3	18	23.4	10	13.0	22	28.6	0		8	10.4	8	10.4	3.9
Shawnee, KS	10	1.3	0		0		3	30.0	0		7	70.0	0		0		0	0	
Texas Unknown County	5	0.7	0		0		5	100.0	0		0		0		0		0	0	
Wabaunsee, KS	5	0.7	0		0		0		0		5	100.0	0		0		0	0	
Other Counties	13	1.7	3	23.1	0		2	15.4	1	7.7	2	15.4	0		3	23.1	2	15.4	7.7
Hospital Total	754	100.0	41	5.4	27	3.6	102	13.5	93	12.3	308	40.8	5	0.7	107	14.2	71	9.4	8.4



Pottawatomie County - KS Residents

PO103E - 2009
Annual

Discharges by Hospital, Age, and Major Service

Hospital	Total Discharges		Pediatric		Adult Medical/Surgical								Psychiatric	Obstetric	Newborn	Pct Surg			
	Cases	Pct	Age 0 - 17	Age 18 - 44	Age 45 - 64	Age 65 - 74	Age 75 +	Cases	Pct	Cases	Pct	Cases					Pct	Cases	Pct
Mercy Rgnl Hlth Ctr-Manhttn KS	618	31.2	11	1.8	42	6.8	78	12.6	90	14.6	145	23.5	2	0.3	89	14.4	161	26.1	26.4
Community HC System-Onaga KS	384	19.4	12	3.1	15	3.9	58	15.1	22	5.7	184	47.9	1	0.3	52	13.5	40	10.4	11.2
StormontVail HlthCre-Topeka KS	380	19.2	15	3.9	40	10.5	66	17.4	54	14.2	103	27.1	45	11.8	28	7.4	29	7.6	37.6
Wamego City Hospital - KS	236	11.9	7	3.0	15	6.4	30	12.7	34	14.4	147	62.3	2	0.8	1	0.4	0	0	0.4
St. Francis Hlth Ctr-Topeka KS	201	10.1	0	0	20	10.0	42	20.9	34	16.9	52	25.9	1	0.5	26	12.9	26	12.9	43.3
Univ of Kansas Hospital-KC KS	63	3.2	7	11.1	16	25.4	25	39.7	7	11.1	5	7.9	1	1.6	1	1.6	1	1.6	46.0
Children's Mercy Hosp-KC MO	20	1.0	20	100.0	0	0	0	0	0	0	0	0	0	0	0	0	0	0	30.0
Geary Comm Hosp-Inctn Cty KS	10	0.5	0	0	1	10.0	3	30.0	0	0	0	0	0	3	30.0	3	30.0	3	30.0
Salina Regional Hlth Center-KS	9	0.5	1	11.1	0	0	2	22.2	1	11.1	0	0	3	33.3	1	11.1	1	11.1	33.3
* KS Residents/NE Hospitals	5	0.3	0	0	1	20.0	1	20.0	3	60.0	0	0	0	0	0	0	0	0	60.0
Overland Park Rgnl Med Cntr-KS	5	0.3	0	0	0	0	2	40.0	0	0	1	20.0	0	0	1	20.0	1	20.0	20.0
Saint Luke's Hospital of KC MO	5	0.3	0	0	0	0	0	0	2	40.0	1	20.0	0	0	1	20.0	1	20.0	60.0
Other Hospitals	47	2.4	1	2.1	13	27.7	9	19.1	8	17.0	2	4.3	5	10.6	5	10.6	4	8.5	44.7
Total	1,983	100.0	74	3.7	163	8.2	316	15.9	255	12.9	640	32.3	60	3.0	208	10.5	267	13.5	25.5



Pottawatomie County - KS Residents

PO103E - 2010
Annual

Discharges by Hospital, Age, and Major Service

Hospital	Total Discharges		Pediatric		Adult Medical/Surgical								Psychiatric	Obstetric	Newborn	Pct Surg			
	Cases	Pct	Age 0 - 17	Age 18 - 44	Age 45 - 64	Age 65 - 74	Age 75 +	Cases	Pct	Cases	Pct	Cases					Pct	Cases	Pct
Mercy Rgnl Hlth Ctr-Manhttn KS	581	29.8	21	3.6	23	4.0	93	16.0	77	13.3	146	25.1	3	0.5	80	13.8	138	23.8	25.3
Community HC System-Onaga KS	387	19.9	17	4.4	16	4.1	42	10.9	35	9.0	173	44.7	0	0	60	15.5	44	11.4	3.9
StormontVail HlthCre-Topeka KS	363	18.6	19	5.2	30	8.3	68	18.7	65	17.9	82	22.6	34	9.4	33	9.1	32	8.8	32.5
Wamego City Hospital - KS	251	12.9	2	0.8	7	2.8	24	9.6	49	19.5	165	65.7	4	1.6	0	0	0	0	35.3
St. Francis Hlth Ctr-Topeka KS	184	9.4	1	0.5	21	11.4	36	19.6	34	18.5	44	23.9	2	1.1	23	12.5	23	12.5	39.7
Univ of Kansas Hospital-KC KS	51	2.6	6	11.8	6	11.8	26	51.0	7	13.7	0	0	4	7.8	2	3.9	0	0	35.3
Children's Mercy Hosp-KC MO	34	1.7	34	100.0	0	0	0	0	0	0	0	0	0	0	0	0	0	0	35.3
* KS Residents/NE Hospitals	11	0.6	1	9.1	0	0	1	9.1	4	36.4	4	36.4	0	0	1	9.1	0	0	27.3
Saint Luke's Hospital of KC MO	11	0.6	0	0	4	36.4	0	0	3	27.3	1	9.1	1	9.1	1	9.1	1	9.1	36.4
Geary Comm Hosp-Inctn Cty KS	10	0.5	0	0	0	0	1	10.0	0	0	0	0	3	30.0	3	30.0	3	30.0	30.0
Salina Regional Hlth Center-KS	7	0.4	0	0	0	0	0	0	0	0	7	100.0	0	0	0	0	0	0	0
Via Christi Rgnl MC-Wichita KS	6	0.3	0	0	0	0	3	50.0	1	16.7	1	16.7	1	16.7	0	0	0	0	66.7
Wesley Medical Cntr-Wichita KS	6	0.3	0	0	1	16.7	2	33.3	2	33.3	0	0	0	0	1	16.7	0	0	16.7
Lawrence Memorial Hospital-KS	5	0.3	0	0	1	20.0	1	20.0	1	20.0	2	40.0	0	0	0	0	0	0	20.0
Memorial Hospital - Abilene KS	5	0.3	0	0	0	0	0	0	0	0	0	0	5	100.0	0	0	0	0	
Other Hospitals	36	1.8	1	2.8	12	33.3	10	27.8	4	11.1	3	8.3	3	8.3	1	2.8	2	5.6	52.8
Total	1,948	100.0	102	5.2	121	6.2	307	15.8	282	14.5	621	31.9	67	3.4	205	10.5	243	12.5	21.5



Pottawatomie County - KS Residents

PO103E - 2011
Annual

Discharges by Hospital, Age, and Major Service

Hospital	Total Discharges		Pediatric		Adult Medical/Surgical								Psychiatric	Obstetric	Newborn	Pct Surg			
	Cases	Pct	Age 0 - 17	Age 18 - 44	Age 45 - 64	Age 65 - 74	Age 75 +	Cases	Pct	Cases	Pct	Cases					Pct	Cases	Pct
Mercy Rgnl Hlth Ctr-Manhttn KS	565	29.8	8	1.4	40	7.1	90	15.9	68	12.0	141	25.0	4	0.7	88	15.6	126	22.3	24.1
StormontVail HlthCre-Topeka KS	374	19.7	17	4.5	38	10.2	81	21.7	50	13.4	71	19.0	52	13.9	34	9.1	31	8.3	29.9
Community HC System-Onaga KS	356	18.8	17	4.8	15	4.2	31	8.7	46	12.9	145	40.7	4	1.1	58	16.3	40	11.2	8.7
Wamego City Hospital - KS	208	11.0	1	0.5	8	3.8	9	4.3	39	18.8	149	71.6	2	1.0	0	0	0	0	0.5
St. Francis Hlth Ctr-Topeka KS	177	9.3	5	2.8	11	6.2	48	27.1	30	16.9	46	26.0	0	0	18	10.2	19	10.7	44.6
Univ of Kansas Hospital-KC KS	62	3.3	2	3.2	20	32.3	22	35.5	6	9.7	4	6.5	1	1.6	5	8.1	2	3.2	37.1
Children's Mercy Hosp-KC MO	37	1.9	35	94.6	0	0	0	0	0	0	0	0	0	0	1	2.7	1	2.7	35.1
Salina Regional Hlth Center-KS	16	0.8	1	6.3	0	0	3	18.8	0	0	0	0	8	50.0	2	12.5	2	12.5	25.0
Saint Luke's Hospital of KC MO	15	0.8	0	0	1	6.7	2	13.3	3	20.0	6	40.0	0	0	2	13.3	1	6.7	33.3
Geary Comm Hosp-Inctn Cty KS	12	0.6	0	0	3	25.0	2	16.7	1	8.3	0	0	0	0	3	25.0	3	25.0	50.0
Via Christi St.Fran-Wichita KS	9	0.5	0	0	2	22.2	4	44.4	1	11.1	1	11.1	1	11.1	0	0	0	0	44.4
Memorial Hospital - Abilene KS	8	0.4	0	0	0	0	0	0	0	0	0	0	8	100.0	0	0	0	0	
* KS Residents/NE Hospitals	7	0.4	2	28.6	1	14.3	3	42.9	0	0	1	14.3	0	0	0	0	0	0	42.9
Other Hospitals	52	2.7	6	11.5	8	15.4	14	26.9	6	11.5	8	15.4	5	9.6	2	3.8	3	5.8	46.2
Total	1,898	100.0	94	5.0	147	7.7	309	16.3	250	13.2	572	30.1	85	4.5	213	11.2	228	12.0	23.2



Community HealthCare System, Inc. - Onaga, KS
 Market Penetration by Major Service, Age, and Patient ZIP Code of Residence

PO202E-2009
 Annual

ZIP	City	Total Discharges		Pediatric		Adult Medical/Surgical						Psychiatric		Obstetric		Newborn		Surg		
		Cases	Pct	Age 0 - 17	Age 18 - 44	Age 45 - 64	Age 65 - 74	Age 75 +	Cases	Pct	Cases	Pct	Cases	Pct	Cases	Pct	Cases	Pct	Pct	
66521	Onaga, KS	330	70.0	12	41.7	17	47.1	62	74.2	35	48.6	157	77.7	7	14.3	22	81.8	18	77.8	28.8
66436	Holton, KS	833	19.0	46	15.2	52	19.2	130	20.0	110	26.4	284	18.3	33	6.1	96	18.8	82	17.1	8.4
66536	Saint Marys, KS	319	30.4	18	22.2	21	9.5	34	8.8	27	11.1	93	39.8	8	0.0	59	45.8	59	35.6	15.8
66415	Centralia, KS	143	44.1	2	0.0	8	12.5	21	19.0	17	23.5	61	52.5	2	0.0	18	72.2	14	64.3	15.9
66427	Frankfort, KS	166	34.3	5	40.0	4	25.0	23	13.0	28	28.6	73	35.6	5	0.0	14	71.4	14	50.0	10.5
66540	Soldier, KS	74	54.1	1	100.0	3	66.7	13	38.5	13	61.5	26	46.2	0	0.0	10	70.0	8	62.5	27.3
66544	Vermillion, KS	47	51.1	0	0.0	0	0.0	4	25.0	13	53.8	25	52.0	3	33.3	1	100.0	1	100.0	0.0
66417	Corning, KS	55	38.2	2	50.0	4	0.0	9	22.2	4	0.0	14	14.3	0	0.0	11	72.7	11	72.7	25.0
66509	Mayetta, KS	283	7.1	8	0.0	32	0.0	76	6.6	39	7.7	45	13.3	14	0.0	37	13.5	32	3.1	7.7
66416	Circleville, KS	53	34.0	3	0.0	0	0.0	12	0.0	5	0.0	23	56.5	1	0.0	5	60.0	4	50.0	18.2
66432	Havensville, KS	40	37.5	2	100.0	7	28.6	6	66.7	4	0.0	15	46.7	3	0.0	2	0.0	1	0.0	12.5
66549	Westmoreland, KS	177	8.5	1	0.0	7	0.0	33	9.1	27	0.0	73	13.7	5	0.0	11	9.1	20	5.0	7.8
66439	Horton, KS	613	1.6	22	0.0	64	0.0	148	0.7	89	0.0	164	0.0	31	0.0	61	9.8	34	8.8	4.9
66538	Seneca, KS	465	1.9	15	6.7	30	0.0	51	0.0	69	1.4	203	1.0	12	0.0	45	6.7	40	5.0	2.2
66422	Emmett, KS	60	13.3	3	33.3	3	0.0	14	0.0	4	25.0	7	28.6	0	0.0	14	14.3	15	13.3	6.7
66547	Wamego, KS	739	1.1	23	0.0	88	2.3	101	1.0	110	0.0	226	0.9	24	0.0	63	3.2	104	1.0	1.1
66407	Belvue, KS	53	13.2	7	0.0	7	14.3	10	10.0	3	33.3	15	20.0	2	0.0	4	25.0	5	0.0	0.0
66550	Wetmore, KS	62	9.7	3	0.0	6	0.0	12	0.0	4	25.0	23	4.3	2	0.0	6	33.3	6	33.3	0.0
66614	Topeka, KS	3,742	0.2	145	0.0	340	0.0	667	0.0	477	0.2	1,055	0.0	310	0.0	389	1.0	359	0.3	0.3
66419	Denison, KS	51	9.8	1	0.0	3	0.0	6	0.0	11	27.3	8	0.0	4	0.0	10	10.0	8	12.5	14.3



Community HealthCare System, Inc. - Onaga, KS
 Market Penetration by Major Service, Age, and Patient ZIP Code of Residence

PO202E-2010
 Annual

ZIP	City	Total Discharges		Pediatric		Adult Medical/Surgical						Psychiatric		Obstetric		Newborn		Surg		
		Cases	Pct	Age 0 - 17	Age 18 - 44	Age 45 - 64	Age 65 - 74	Age 75 +	Cases	Pct	Cases	Pct	Cases	Pct	Cases	Pct	Cases	Pct	Pct	
66521	Onaga, KS	353	62.6	21	42.9	21	42.9	54	59.3	49	46.9	162	75.9	11	0.0	18	77.8	17	64.7	10.8
66436	Holton, KS	747	17.1	40	5.0	57	7.0	122	16.4	115	20.0	243	18.9	31	3.2	70	25.7	69	20.3	6.1
66536	Saint Marys, KS	339	30.7	27	14.8	15	0.0	34	17.6	34	8.8	75	42.7	10	0.0	76	44.7	68	36.8	8.5
66427	Frankfort, KS	196	32.7	6	66.7	6	16.7	29	44.8	25	24.0	86	14.0	5	0.0	18	77.8	21	66.7	8.3
66415	Centralia, KS	136	46.3	4	0.0	4	0.0	11	27.3	11	9.1	85	55.3	2	50.0	11	63.6	8	50.0	14.7
66544	Vermillion, KS	67	47.8	2	0.0	1	0.0	18	22.2	3	33.3	36	66.7	0	0.0	4	50.0	3	33.3	6.3
66540	Soldier, KS	74	40.5	4	25.0	6	16.7	15	33.3	24	54.2	10	40.0	4	25.0	7	42.9	4	50.0	11.1
66549	Westmoreland, KS	169	12.4	6	0.0	4	0.0	29	6.9	30	13.3	68	14.7	5	0.0	10	30.0	17	11.8	2.6
66422	Emmett, KS	55	32.7	2	100.0	7	28.6	5	0.0	9	11.1	10	30.0	1	0.0	11	54.5	10	40.0	12.5
66509	Mayetta, KS	329	4.6	13	0.0	36	0.0	82	7.3	59	0.0	44	15.9	17	0.0	39	2.6	39	2.6	0.0
66538	Seneca, KS	455	3.3	20	0.0	22	0.0	56	5.4	67	7.5	203	0.0	12	0.0	41	12.2	34	5.9	1.7
66432	Havensville, KS	38	34.2	3	66.7	9	22.2	10	20.0	6	50.0	6	66.7	2	0.0	1	0.0	1	0.0	0.0
66417	Corning, KS	46	26.1	5	20.0	4	0.0	13	23.1	2	0.0	5	20.0	1	0.0	9	44.4	7	42.9	10.0
66428	Goff, KS	53	20.8	1	0.0	3	0.0	14	14.3	15	33.3	9	0.0	1	0.0	7	42.9	3	33.3	16.7
66419	Denison, KS	75	12.0	5	0.0	8	0.0	10	0.0	29	31.0	12	0.0	6	0.0	3	0.0	2	0.0	0.0
66552	Whiting, KS	45	17.8	2	0.0	5	0.0	16	31.3	4	0.0	12	8.3	2	0.0	3	66.7	1	0.0	13.3
66604	Topeka, KS	3,517	0.2	203	0.0	342	0.0	704	0.0	355	0.0	786	0.0	403	0.0	377	1.1	347	0.9	0.5
x99999	Unknown ZIP, XX	Market share analysis is not relative to this ZIP Code.																		
66416	Circleville, KS	36	16.7	2	0.0	7	14.3	6	0.0	6	0.0	5	40.0	3	0.0	3	33.3	4	50.0	8.3
66418	Della, KS	65	7.7	8	0.0	9	22.2	13	7.7	5	0.0	8	0.0	2	0.0	10	10.0	10	10.0	0.0
66547	Wamego, KS	716	0.7	31	0.0	42	7.1	100	0.0	115	0.0	249	0.0	23	0.0	63	1.6	93	1.1	0.0



Community HealthCare System, Inc. - Onaga, KS
Market Penetration by Major Service, Age, and Patient ZIP Code of Residence

PO202E-2011
Annual

ZIP	City	Total Discharges		Pediatric				Adult Medical/Surgical								Psychiatric		Obstetric		Newborn		Surg Pct
		Cases	Pct	Age 0 - 17 Cases	Pct	Age 18 - 44 Cases	Pct	Age 45 - 64 Cases	Pct	Age 65 - 74 Cases	Pct	Age 75 + Cases	Pct	Cases	Pct	Cases	Pct	Cases	Pct			
66521	Onaga, KS	279	62.0	19	57.9	18	55.6	55	38.2	51	66.7	87	82.8	13	15.4	20	70.0	16	56.3	24.5		
66436	Holton, KS	720	16.1	32	6.3	52	11.5	129	17.8	96	16.7	231	20.3	31	0.0	79	17.7	70	11.4	4.3		
66536	Saint Marys, KS	288	35.1	21	19.0	15	0.0	21	9.5	27	18.5	88	48.9	15	6.7	55	50.9	46	39.1	10.6		
66415	Centralia, KS	104	37.5	10	40.0	5	0.0	21	28.6	16	31.3	30	60.0	1	0.0	11	27.3	10	30.0	8.3		
66544	Vermillion, KS	60	60.0	0	0.0	1	0.0	8	50.0	14	35.7	34	76.5	1	100.0	1	0.0	1	0.0	0.0		
66427	Frankfort, KS	161	21.7	5	20.0	5	0.0	33	33.3	24	0.0	65	21.5	2	0.0	15	40.0	12	25.0	9.4		
66549	Westmoreland, KS	211	15.2	7	0.0	11	27.3	31	16.1	24	12.5	92	15.2	6	0.0	18	22.2	22	13.6	9.5		
66540	Soldier, KS	80	35.0	4	75.0	7	14.3	18	11.1	18	27.8	18	50.0	4	0.0	7	71.4	4	75.0	14.3		
66509	Mayetta, KS	377	7.2	21	9.5	38	0.0	93	1.1	64	9.4	65	21.5	20	0.0	41	7.3	35	2.9	2.8		
66417	Corning, KS	44	54.5	2	100.0	4	25.0	14	71.4	7	57.1	8	37.5	1	0.0	4	50.0	4	50.0	0.0		
66432	Havensville, KS	45	35.6	3	33.3	4	0.0	9	22.2	7	42.9	11	63.6	2	0.0	5	40.0	4	25.0	21.4		
66422	Emmett, KS	47	29.8	2	0.0	10	10.0	6	16.7	0	0.0	5	0.0	2	0.0	11	54.5	11	54.5	0.0		
66416	Circleville, KS	50	22.0	0	0.0	7	0.0	10	10.0	7	14.3	11	45.5	7	0.0	5	60.0	3	33.3	23.1		
66547	Wamego, KS	712	1.4	28	0.0	55	1.8	122	0.0	95	1.1	212	0.9	38	2.6	73	4.1	89	2.2	2.2		
66440	Hoyt, KS	157	5.1	13	7.7	20	5.0	30	0.0	23	4.3	33	3.0	8	0.0	15	13.3	15	13.3	2.0		
66520	Olsburg, KS	50	12.0	1	100.0	8	0.0	16	0.0	5	0.0	14	35.7	1	0.0	2	0.0	3	0.0	0.0		
66403	Axtell, KS	79	6.3	4	0.0	4	0.0	15	0.0	19	0.0	23	21.7	1	0.0	7	0.0	6	0.0	0.0		
66508	Marysville, KS	558	0.9	10	10.0	46	0.0	92	0.0	100	0.0	257	0.8	22	0.0	13	7.7	18	5.6	0.7		
66533	Rossville, KS	201	2.5	14	0.0	9	0.0	31	0.0	42	0.0	48	10.4	12	0.0	22	0.0	23	0.0	0.0		
66534	Sabetha, KS	471	1.1	20	0.0	57	0.0	91	0.0	67	1.5	142	0.0	21	0.0	38	5.3	35	5.7	0.0		
66538	Seneca, KS	380	1.3	16	12.5	17	0.0	49	4.1	54	0.0	156	0.6	11	0.0	38	0.0	39	0.0	0.0		
66552	Whiting, KS	42	11.9	1	0.0	3	0.0	6	16.7	7	0.0	9	0.0	0	0.0	9	33.3	7	14.3	27.3		
x99999	Unknown ZIP, XX																					

Market share analysis is not relative to this ZIP Code.



Community HealthCare System, Inc. - Onaga, KS

OP TOT223E - 2009
Annual
Hospital - 171354

Total Outpatient Visits and Market Share by Revenue Category and Patient County Code

Revenue Category	Total	20149		20085		20131		20117		20177		20197		20087		All
	Visits	Visits	%	Visits	%	Visits	%	Visits	%	Visits	%	Visits	%	Visits	%	Other
1 Emergency Dept (45x)	1,455	807	64.3	188	5.9	122	8.9	138	6.7	78	0.1	50	5.6	2	0.1	70
2 Surgery (36x, 49x)	541	229	23.1	113	8.0	61	5.3	79	7.7	27	0.2	18	4.4			14
3 Observation (762)	223	110	11.6	39	5.3	29	7.1	27	5.7	6	0.1	2	0.6			10
11 Radiology-Diag (32x ex 322&323)	2,957	1,397	59.2	703	16.7	243	10.7	218	5.7	195	0.4	99	9.9	19	0.4	83
14 Nuclear Medicine (34x)	193	66	20.7	60	11.6	28	11.6	30	8.1	4	0.1					5
15 CT Scan (35x)	810	374	42.6	171	14.7	94	14.1	105	10.0	34	0.2	16	4.3	2	0.1	14
16 Mammography (401, 403)	686	330	24.7	119	10.5	101	15.1	118	8.8	8	0.1	3	0.8			7
17 Ultrasound (402)	732	337	42.1	148	18.0	87	15.6	84	9.9	31	0.4	13	6.6	2	0.2	30
19 Magnetic Resonance Tech (61x)	339	167	37.6	47	6.8	26	6.8	40	8.7	32	0.4	15	6.6	2	0.2	10
23 Pulmonary Function (46x)	38	20	12.4	7	3.0	2	1.6	4	2.7	2	0.0	1	1.2			2
25 Stress Test (482)	150	56	41.2	46	14.8	19	33.3	23	7.7	1	0.2					5
26 Echocardiology (483)	5	1	1.1	1	7.7	1	20.0	1	5.0			1	5.9			
35 Treatment Room (76x excl. 762)	230	137	23.9	37	2.7	22	2.0	23	3.2	4	0.0	2	0.5			5
36 Respiratory Services (41x)	28	14	35.0	8	23.5	2	4.1	4	3.7							
37 EKG/ECG (73x)	696	319	48.1	160	11.8	71	10.4	84	9.0	23	0.2	8	2.6	5	0.4	26
38 Cardiology (48x excl. 481-483)	246	108	57.5	70	15.2	24	10.5	25	6.5	5	0.3	8	14.3	2	1.0	4
42 Physical Therapy (42x)	1,136	522	63.3	241	33.5	114	16.4	165	19.6	41	1.5	25	14.0	5	1.5	23
43 Occupational Therapy (43x)	242	144	41.5	34	23.8	28	27.7	28	19.9	2	0.2	4	2.8			2
44 Speech-Language Pathology (44x)	114	64	32.3	11	21.6	20	16.8	10	14.3	4	1.0	4	3.3			1
Actual visits in report	8,878	4,189	43.3	1,904	6.8	878	9.4	944	7.8	440	0.3	236	6.9	36	0.3	251
Actual unclassified visits	17,015	6,324	69.4	5,144	30.9	2,029	17.5	1,861	11.1	739	0.8	342	16.9	145	2.1	431
Actual total visits	25,896	10,515	55.9	7,048	15.6	2,907	13.8	2,806	9.7	1,179	0.5	578	10.6	181	0.8	682
ED visits admitted; not included	36	20	4.6	5	1.3	3	1.2	5	2.6	2	0.0					1
20149 is Pottawatomie, KS	20085 is Jackson, KS				20131 is Nemaha, KS				20177 is Marshall, KS							
20177 is Shawnee, KS	20197 is Wabaunsee, KS				20087 is Jefferson, KS				Other is All other counties							



Community HealthCare System, Inc. - Onaga, KS

OP TOT223E - 2010
Annual
Hospital - 171354

Total Outpatient Visits and Market Share by Revenue Category and Patient County Code

Revenue Category	Total	20149		20085		20131		20117		20177		20197		20087		All
	Visits	Visits	%	Visits	%	Visits	%	Visits	%	Visits	%	Visits	%	Visits	%	Other
1 Emergency Dept (45x)	1,653	955	71.1	239	7.7	129	8.4	168	7.3	63	0.1	43	5.5	3	0.1	53
2 Surgery (36x, 49x)	445	179	17.9	78	5.4	49	4.5	76	7.7	25	0.2	14	2.9	5	0.3	19
3 Observation (762)	245	126	10.6	38	5.2	30	6.1	43	7.7	1	0.0	1	0.3			6
11 Radiology-Diag (32x ex 322&323)	3,339	1,569	50.1	826	19.8	289	12.8	251	6.3	207	0.4	89	8.2	23	0.6	85
14 Nuclear Medicine (34x)	187	64	21.6	66	13.0	18	7.4	26	8.1	4	0.1	1	0.8	3	0.6	5
15 CT Scan (35x)	806	352	34.4	201	16.5	102	16.5	88	8.9	26	0.2	11	2.6	8	0.5	18
16 Mammography (401, 403)	602	271	16.2	94	8.9	98	15.8	124	11.1	2	0.0	4	1.0	2	0.2	7
17 Ultrasound (402)	731	323	33.5	161	21.9	95	17.9	75	7.8	36	0.5	12	5.6	5	0.6	24
19 Magnetic Resonance Tech (61x)	301	162	27.6	49	7.2	26	6.9	36	9.6	13	0.2	5	2.1	1	0.1	9
23 Pulmonary Function (46x)	39	17	11.2	12	4.6	7	4.6	3	1.9							1
25 Stress Test (482)	159	50	26.5	59	16.9	16	23.2	25	8.8	4	0.2	1	1.8	1	0.4	3
35 Treatment Room (76x excl. 762)	307	127	16.8	117	7.9	25	2.2	20	2.5	7	0.0	4	0.8	1	0.1	6
36 Respiratory Services (41x)	43	22	59.5	5	21.7	7	24.1	8	7.1							1
37 EKG/ECG (73x)	757	336	48.6	200	13.8	79	11.0	94	9.6	23	0.2	4	1.3	4	0.3	17
38 Cardiology (48x excl. 481-483)	245	104	41.8	75	14.3	21	14.6	31	16.5	9	0.3	4	4.8			1
42 Physical Therapy (42x)	1,148	580	48.7	261	37.7	134	20.7	98	15.1	19	0.7	34	15.1	11	3.3	11
43 Occupational Therapy (43x)	255	130	58.6	50	34.0	34	33.7	20	21.5	6	0.7	7	11.5			8
44 Speech-Language Pathology (44x)	94	51	23.0	17	25.8	16	15.1	9	11.7							1
Actual visits in report	9,301	4,371	36.1	2,208	8.0	937	10.4	886	7.5	411	0.3	209	5.4	61	0.4	218
Actual unclassified visits	16,826	6,626	53.6	4,801	29.4	1,955	17.3	1,817	10.8	782	0.8	356	13.2	119	1.6	370
Actual total visits	26,127	10,997	45.0	7,009	15.9	2,892	14.2	2,703	9.4	1,193	0.5	565	8.6	180	0.8	588
ED visits admitted; not included	107	58	12.7	19	4.4	9	4.5	20	10.9					1	0.4	
20149 is Pottawatomie, KS	20085 is Jackson, KS				20131 is Nemaha, KS				20177 is Marshall, KS							
20177 is Shawnee, KS	20197 is Wabaunsee, KS				20087 is Jefferson, KS				Other is All other counties							



Community HealthCare System, Inc. - Onaga, KS

OP TOT223E - 2011
Annual
Hospital - 171354

Total Outpatient Visits and Market Share by Revenue Category and Patient County Code

Revenue Category	Total	20149		20085		20117		20131		20177		20197		20087		All
	Visits	Visits	%	Visits	%	Visits	%	Visits	%	Visits	%	Visits	%	Visits	%	Other
1 Emergency Dept (45x)	1,777	1,059	72.8	204	6.1	184	7.3	151	10.1	81	0.1	39	4.7	1	0.0	58
2 Surgery (36x, 49x)	515	189	18.2	155	11.0	78	9.0	50	3.7	26	0.2	9	2.0	1	0.1	7
3 Observation (762)	261	127	9.8	56	7.5	43	7.9	29	6.8	1	0.0					5
11 Radiology-Diag (32x ex 322&323)	3,666	1,658	48.7	1,003	22.8	344	8.8	265	11.4	196	0.4	92	8.2	22	0.5	86
14 Nuclear Medicine (34x)	204	55	13.4	93	15.8	24	7.6	24	8.8	4	0.1			2	0.3	2
15 CT Scan (35x)	871	340	31.1	267	19.4	88	8.5	104	15.2	34	0.2	11	2.3	3	0.2	24
16 Mammography (401, 403)	585	279	15.8	91	8.6	105	7.5	98	15.3	3	0.0	1	0.2			8
17 Ultrasound (402)	854	355	36.9	239	27.5	88	9.4	81	14.9	49	0.7	15	7.5	4	0.5	23
19 Magnetic Resonance Tech (61x)	337	167	25.2	63	8.2	47	11.2	24	6.2	22	0.2	7	2.6	1	0.1	6
23 Pulmonary Function (46x)	50	22	12.0	7	2.9	11	6.2	5	3.5			1	1.5	1	0.3	3
25 Stress Test (482)	175	46	16.8	76	18.2	23	8.9	22	25.0	4	0.1			2	0.5	2
26 Echocardiology (483)	2			1	2.2	1	0.2									
35 Treatment Room (76x excl. 762)	552	146	17.1	263	15.8	38	4.2	50	3.7	20	0.1	8	1.6	5	0.4	22
36 Respiratory Services (41x)	21	15	46.9	1	5.6	3	2.5	1	4.6							1
37 EKG/ECG (73x)	953	352	51.5	287	18.9	128	12.6	80	11.3	58	0.4	19	5.9	5	0.4	24
38 Cardiology (48x excl. 481-483)	270	87	28.8	110	16.7	26	15.5	30	16.5	7	0.1	2	1.5	2	0.5	6
42 Physical Therapy (42x)	1,354	526	45.7	431	48.2	204	26.5	125	16.9	16	0.6	22	9.8	4	1.2	26
43 Occupational Therapy (43x)	309	154	51.5	82	45.8	21	23.3	19	17.8			12	11.9			21
44 Speech-Language Pathology (44x)	118	74	25.6	13	21.7	8	12.3	14	15.6			9	5.6			
Actual visits in report	10,622	4,566	34.7	3,017	10.0	1,134	9.1	916	9.6	462	0.3	212	5.1	47	0.3	268
Actual unclassified visits	18,671	7,462	56.5	5,380	31.4	2,020	12.3	1,887	14.7	906	0.9	453	16.5	150	2.0	413
Actual total visits	29,293	12,028	45.6	8,397	17.8	3,154	10.9	2,803	12.5	1,368	0.5	665	9.7	197	0.9	681
ED visits admitted; not included	38	13	5.1	10	3.6	9	10.3	6	7.7							

20149 is Pottawatomie, KS 20085 is Jackson, KS 20117 is Marshall, KS 20131 is Nemaha, KS
20177 is Shawnee, KS 20197 is Wabaunsee, KS 20087 is Jefferson, KS Other is All other counties

Town Hall Attendees Notes & Feedback

[VVV Research & Development INC]

Hospital / City: Community HealthCare System Pottawatomie CHNA Town Hall Date 5-10-2012 N=29

#	IRS Cat	Name	Title	Organization	Address/City/ST/Zip
1	City/Comm planners	Bob Cole	Director	Pottawatomie Economic Development	PO Box 288, 1004 Lincoln, Wamego 66547
2	City/Comm planners	Chris Trudo	Director	Emergency Management, Pottawatomie County	207 N. 1st Street, PO Box 288, Westmoreland 66549
3	Providers	Christy Koelzer	Fitness supervisor	CHCS	Onaga, KS
4	Board members.	Dan Peters		Onaga Community Foundation	301 Leonard St., Onaga 66521
5	Local clergy	Deb Kiker	CEO	Community Health Ministries	903 6th Street, Wamego 66547
6	Political officials	Elizabeth Patton	District rep	Senator Moran	Topeka, KS
7	Local clergy	Father John Reynolds	Catholic priest	St. Vincent DePaul	Box 396, 809 Clifton Street 66521
8	Commissioners	Gary Yenzer	Commissioner District 1	Pottawotomie Co	PO Box 288, 207 N 1st Street, Westmoreland 66551
9	Business rep	Jim Mees	Vice President	The St. Marys State Bank	905 East Bertrand, St. Marys 66536
10	Providers	Joely Jellison	RN	CHCS	Topeka, KS
11	Press	John D		Newspaper	Wheaton, KS
12	Providers	John Matt	Home health supervisor	CHCS	Bellvue, KS
13	Board members.	Justin Boswell	CHCS Board Chair	CHCS	17215 Onaga Road, Onaga
14	Board members.	Karen Harder	CHCS Board member	CHCS	17755 Golden Belt Rd, Wheaton 66551
15	Public health official	Karen Matson	Grant coordinator	Pottawatomie County HD	Westmoreland, KS
16	Education	Kristi Huttles	HH RN & USD 322 school nurse	CHCS	Centralia, KS
17	Public health official	Leslie Campbell	Director	Pottawatomie County HD	Westmoreland, KS
18	Providers	Lois Lourdes	Director	CHCS	Onaga, KS
19	Board members.	Mark Bouton	CHCS Board member	CHCS	15607 Hwy 63, Havensville 66432
20	Providers	Monica Holthaus	CFO	CHCS	Centralia, KS
21	Providers	Pam Bachman	Director	CHCS	Onaga, KS
22	Providers	Paul Zidek	IT Director	CHCS	Onaga, KS
23	Providers	Rosalind Lewis	CNO	CHCS	Onaga, KS
24	Providers	Shelly Suther	Social Services	CHCS	808 Chestnut, Frankfort 66427
25	Commissioners	Stan Hartwich	Commissioner District 3	Pottawotomie Co	PO Box 288, 207 N 1st Street, Westmoreland 66550
26	Political officials	Terry Force	Mayor	Wheaton	342 Main, Wheaton 66521
27	Public safety official	Terry Seiver-Becker		Pawnee Mental Health	2001 Claflin Road, Manhattan 66502
28	Providers	Theresa Dressman	Director of nursing	CHCS	Frankfort, KS
29	Providers	Tonya Bush	Office Manager	CHCS	St. Mary's, KS

**Community Health Needs Assessment - Town Hall Activity
Pottawatomie, KS (White cards) N=29**

Today: What are the strengths of our community that contribute to health ?

1	4 fitness/wellness centers
2	Access
3	Access and quality of care and providers
4	Active kids and adults
5	Adequate number of doctors
6	Care available in all sections of county
7	CHCS - full service
8	CHCS continues to grow and expand - open new clinics
9	Clinical care, 21 out of 100
10	Close knit community that cares about each other
11	Collaboration of care
12	Communities willing to assist those with health issues
13	Community health initiatives are accepted
14	Continuity of care
15	Economics - Low unemployment & population
16	Elder care is excellent
17	Emergency access
18	Emergency responders in each area of the county.
19	Emergency response/911 system
20	EMS
21	EMS - emergency preparedness
22	EMS system - county wide
23	EMS system and ER access
24	ER
25	ER access is excellent
26	Faith based access
27	Fitness center
28	Fitness centers
29	Good ambulance/EMS
30	Good doctors
31	Good facilities
32	Good mix of young/old in population
33	Good partnerships
34	Good physicians
35	Good quality providers
36	Good resources
37	Great access to physician care in a timely manner
38	Great dedicated PCP
39	Growing - more clinics
40	Growth in services (future)
41	Health care availability/choices available.
42	Health care providers well educated
43	Health department
44	Healthy living - low mental, physical health needs - less issues than other counties
45	Hospitals active in community

**Community Health Needs Assessment - Town Hall Activity
Pottawatomie, KS (White cards) N=29**

Today: What are the strengths of our community that contribute to health ?

46	Information system - ehr process
47	Local hospital availability & quality.
48	Local pharmacies/fitness centers
49	Local physician availability, specialists and GP
50	Low unemployment
51	Mainly affordable care
52	Many providers (physicians) including specialists that are available to communities - ac
53	Multiple sites from CHCS that have clinics
54	Number of primary care physicians to population
55	Nursing care
56	Outpatient services that allow patients to remain in their home town environment for t
57	Over 65 live at home
58	Patient care - hospital - get great reviews
59	People feel they are taken care of well by their providers/hospitals.
60	Personal attention
61	Pharmacies in communities
62	Pneumonia cases lower than CAH group
63	Preventative health is excellent here
64	Primary care abilities
65	Primary care available.
66	Progressiveness (forward thinking).
67	Providers who are active in their communities
68	Quality
69	Quality of care
70	Quick access
71	School nurse screenings & education
72	Schools interested in health
73	Three hospitals.
74	We have health care facilities in four of the county's nine communities.

Community Health Needs Assessment - Town Hall Activity Pottawatomie, KS (White cards) N=29	
Today: Are there healthcare services in your community / neighborhood that you feel need to be improved and / or changed?	
1	Addiction
2	Assistance program for uninsured
3	Assisted living capacity locally
4	Availability to complete more comprehensive school screenings - need more time
5	Behavioral health
6	Charity care
7	Continue improving preventive education - doing well with fitness, need nutrition, obesity, suicide
8	Counseling on obesity, smoking, drinking, exercise
9	diabetes
10	Diabetes screenings
11	Drugs and alcohol
12	Educational programs - expand or implement in the community targeting areas in need - obesity, nutrition, substance abuse, diabetes, & heart disease education
13	Elderly living alone
14	Flu shot/immunizations
15	Flu shots
16	Flu shots - only 38%
17	Follow through - doctor recommends patient increase or begin exercise program - are we making sure people take action?
18	Food assistance
19	Food assistance
20	Food assistance trending up
21	Get the marginally disabled back to work
22	Health education classes
23	Health fair - screening testing
24	Healthier food choices in rural setting
25	Heart disease mortality trend
26	Lack of mental health services
27	Mammography screenings
28	Mammography/preventative care
29	Mental health
30	Mental health
31	mental health/behavioral care
32	More counseling
33	More needing food assistance
34	More pt education
35	Need assisted living
36	New facilities
37	New health facilities
38	Nursing home availability/affordability
39	Obesity
40	obesity
41	Obesity
42	Obesity

**Community Health Needs Assessment - Town Hall Activity
Pottawatomie, KS (White cards) N=29**

**Today: Are there healthcare services in your community / neighborhood that
you feel need to be improved and / or changed?**

43	People 65+ living alone
44	Percent of low weight births
45	Percentage of free lunch at schools
46	Physical exercise
47	Physical inactivity
48	Preventive care - wellness education
49	Preventive health education
50	Program/education to encourage maternal health
51	School nurse
52	Senior care
53	Smoking cessation program
54	Social support
55	Stronger preventative services
56	Stronger support of food pantry
57	Suicide mortality trend
58	Suicide rates
59	Transportation
60	Transportation services
61	Unemployment
62	Uninsured
63	uninsured
64	Uninsured - charity care
65	Uninsured number too high
66	universal coverage in future
67	Wellness education for general population
68	Wellness program at school
69	Wellness promotion
70	WIC
71	WIC
72	With aging population in home, more access to trained services to keep them in home.

Pottawatomie County Town Hall Meeting Notes – 5/10/12 N=31

Intro from Greg & Leslie, Vince and all attendees

Background from Vince

Red – environmental quality, why 89 out of all the counties? Hard time believing that.

Positive Things:

- People over 65 are well enough to be living at their homes alone
- 4 facilities 3 hospitals in the county of the 9 communities, great access
- Great partnerships with the county, eachother, EMS
- Affordability
- Quality – EMS and ER
- One doctor for every 1236 people
- Healthy living
- Schools interested in health; programs
- 21 out of 100 critical care?
- Creatively solve any issues that come up
- Very forward thinking board of directors for CHCS, looking into the future for the next 25 years
- Self assessment, 90% of people felt they were well
- People living alone, home health program
- Low unemployment, young people, great economy
- Faith based
- Access to pharmacies – Onaga, st marys, Wamego, Westmoreland, manhattan
- Close knit communities that care about one another, general public
 - Help each other with transportation
- Access to fitness centers, just about every community has one
 - Onaga hospital, Wamego, St marys, Westmoreland,

Weaknesses:

- Availability of assisted living, expand it
- Infant immunization, room for improvement, some cultural
- Access to specialist care, have it but a lot of times it might have to be a certain day or certain week
- Availability for more school screenings, wellness preventative programs, budget has been cut back
- Uninsured number is really high, or underinsured
- Getting the marginally disabled back to work
- Resources for repair and replacement of facilities and equipment
- Funding for increased early childhood education and intervention

- Eating out, only choice in this community area is fried food or fattening – access to healthy food when you eat out
- Increasing number of folks going on food assistance
- Underemployment rate?
- Employment but wages aren't high enough
- Breadwinner employment
- Not a lot of childcare facilities for working moms, drive out of the way to drop off kids
- Food assistance, a lot of need for help and it's no longer poverty, it's middle income
- Economic impact of health care assistance in this county is huge, compared to size of overall economy. Not recorded. K-12 health care... Congress and insurance companies to keep financing it.
- Social determinants of health, living conditions
- Over age 65 living alone, more services to continue to keep them in their home as long as possible; encourage home care and community based services
- Suicide rates too high – demographic?
- Level of free care at hospitals higher than it needed to be
- Number of low birthweight babies and babies born before 37 weeks
- Moms that smoke
- More counseling and education to help people who are obese, mental health
 - There's a lot of need

Notes:

- Different local numbers for county
- Explore Telehealth and Telemedicine

Public Notice & Invitation

[VVV Research & Development INC]

CHCS LOGO

NEWS

Date: April 23, 2012
For Immediate Release
Media Contact: XXX

In order to gauge the overall health needs of XXX County residents, XXX Hospital is working together with the XXX County Department of Health to conduct a community wide health needs assessment. To ensure that all county residents have an opportunity to participate, the deadline to complete this assessment has been extended to **Friday May 4th, 2012.**

If you would like to participate and did not receive a mailed paper survey, please either complete assessment online by entering the following link into your browser <https://www.surveymonkey.com/s/FWX6YY5log> or drop by XXX Hospital and/or XXX Health Department to pick up a paper survey.

Again it is important that all assessment surveys be completed and returned by Friday May 4th, 2012. All survey responses are anonymous and completing the survey takes less than 10 minutes.

In addition, residents interested in discussing and prioritizing XXX County future health initiatives will have their chance on Thursday, May 10th, 2012. Currently, a Town Hall lunch meeting is being organized on that date at the XXX Community Center from 11:30 -1 pm. More information on how to participate will be released in a few weeks.

Community HealthCare System (CHCS) and Pottawatomie County Health Department are conducting an assessment to understand community health needs and desires in healthcare delivery in our county and CHCS service areas. In addition, we want to make sure that community members are involved in this process and would like to extend an invitation for your participation.

We are inviting you to a town hall meeting where we will discuss the current health care trends and needs of our communities. This town hall meeting will be an opportunity for you to share your experiences and suggestions regarding improvements to health care within Pottawatomie County and greater northeast Kansas region. Community HealthCare System and Pottawatomie County Health Department has retained the services of VVV Research and Development, Inc. from Olathe, KS to facilitate the meeting. Your input will be integrated into the final report and recommendations that will be CHCS and the Health Department. Please remember that this is your chance to join us for this very important community discussion and tell us what you think.

If your schedule permits, here are the details for the meeting that we are asking you to attend:

Community HealthCare System and Pottawatomie County Health Department Town Hall Meeting:

Where: Onaga Community Center, 100 Union Pacific Road

When: **Thursday, May 10th**

Time: 11:30 am – 1:00pm; lunch will be provided

If you have any questions or concerns, please contact Lorraine Meyer at 785-889-4657 ext. 1100. Again, we look forward to seeing you at this meeting and thank you for your participation.

Community HealthCare System and Pottawatomie County Health Department announce a county-wide community health needs assessment

Community HealthCare System, working with Pottawatomie County Health Department announces plans to conduct a community health needs assessment for Pottawatomie County. The results of the survey will provide guidance to address identified health care needs and fulfill both federal and state mandates.

Information will be gathered using a comprehensive survey, both paper- and web-based. The survey is designed to measure Pottawatomie County residents' perceptions of health care delivery, access, and health practices. The week of April 9, 2012, surveys were mailed to 1,000 randomly selected Pottawatomie County residents. Residents who did not receive a paper survey, can pick up a copy at Community HealthCare System, Onaga and/or St. Marys campuses or Pottawatomie County Health Department, or can take the survey online by visiting <https://www.surveymonkey.com/s/FWX6YY5>

VVV Research and Development, an independent research firm from Olathe, Kan., has been retained to conduct this county-wide research. All surveys must be completed and returned by **May 4th, 2012**. All survey responses are anonymous and the survey takes less than 10 minutes to complete.

A town hall meeting is planned for community members, May 10th from 11:30 to 1:00pm at the Onaga Community Center, 100 Union Pacific Road. Lunch will be provided. The purpose of this meeting is to discuss and prioritize future Pottawatomie County health initiatives.

Primary Research Detail

[VVV Research & Development INC]

2012 Community Health Needs Assessment: Pottawatomie County, KS

We need your input. Community HealthCare System Onaga and Pottawatomie County Health Department are working together to conduct a community health needs assessment. (For more info www.chcs-ks.org or www.pottcounty.org)

With U.S. Health Reform, comes legislation to collect public opinion regarding community health care needs & preferences. In order to gather this information a confidential survey has been developed (for research purposes only). Thank you for your participation.

If you prefer, you can complete this same survey online by copying the following link into your browser:
<https://www.surveymonkey.com/s/FWX6YY5> **Survey returns are due on Monday April 30th, 2012.**

Part I: HEALTHCARE PERCEPTIONS & SATISFACTION

1. In general, how would you rate the overall quality of the healthcare delivered to your community?

	Very Good	Good	Fair	Poor	Very Poor
OVERALL Quality of Care	<input type="radio"/>	<input type="radio"/>	<input type="radio"/>	<input type="radio"/>	<input type="radio"/>

2. How satisfied are you with each of the following . . .? (Check one box per row)

	Very Good	Good	Fair	Poor	Very Poor	N/A
a) Ambulance Service	<input type="radio"/>	<input type="radio"/>	<input type="radio"/>	<input type="radio"/>	<input type="radio"/>	<input type="radio"/>
b) Child Care	<input type="radio"/>	<input type="radio"/>	<input type="radio"/>	<input type="radio"/>	<input type="radio"/>	<input type="radio"/>
c) Chiropractor	<input type="radio"/>	<input type="radio"/>	<input type="radio"/>	<input type="radio"/>	<input type="radio"/>	<input type="radio"/>
d) Dentists	<input type="radio"/>	<input type="radio"/>	<input type="radio"/>	<input type="radio"/>	<input type="radio"/>	<input type="radio"/>
e) Emergency Room	<input type="radio"/>	<input type="radio"/>	<input type="radio"/>	<input type="radio"/>	<input type="radio"/>	<input type="radio"/>
f) Eye Doctor / Optometrist	<input type="radio"/>	<input type="radio"/>	<input type="radio"/>	<input type="radio"/>	<input type="radio"/>	<input type="radio"/>
g) Family Planning Services	<input type="radio"/>	<input type="radio"/>	<input type="radio"/>	<input type="radio"/>	<input type="radio"/>	<input type="radio"/>
h) Home Health	<input type="radio"/>	<input type="radio"/>	<input type="radio"/>	<input type="radio"/>	<input type="radio"/>	<input type="radio"/>
i) Hospice	<input type="radio"/>	<input type="radio"/>	<input type="radio"/>	<input type="radio"/>	<input type="radio"/>	<input type="radio"/>
j) Inpatient Services	<input type="radio"/>	<input type="radio"/>	<input type="radio"/>	<input type="radio"/>	<input type="radio"/>	<input type="radio"/>
k) Mental Health Services	<input type="radio"/>	<input type="radio"/>	<input type="radio"/>	<input type="radio"/>	<input type="radio"/>	<input type="radio"/>
l) Nursing Home	<input type="radio"/>	<input type="radio"/>	<input type="radio"/>	<input type="radio"/>	<input type="radio"/>	<input type="radio"/>
m) Outpatient Services	<input type="radio"/>	<input type="radio"/>	<input type="radio"/>	<input type="radio"/>	<input type="radio"/>	<input type="radio"/>
n) Pharmacy	<input type="radio"/>	<input type="radio"/>	<input type="radio"/>	<input type="radio"/>	<input type="radio"/>	<input type="radio"/>
o) Primary Care	<input type="radio"/>	<input type="radio"/>	<input type="radio"/>	<input type="radio"/>	<input type="radio"/>	<input type="radio"/>
p) Public Health Department	<input type="radio"/>	<input type="radio"/>	<input type="radio"/>	<input type="radio"/>	<input type="radio"/>	<input type="radio"/>
q) School Nurse	<input type="radio"/>	<input type="radio"/>	<input type="radio"/>	<input type="radio"/>	<input type="radio"/>	<input type="radio"/>
r) Specialist Physician Care	<input type="radio"/>	<input type="radio"/>	<input type="radio"/>	<input type="radio"/>	<input type="radio"/>	<input type="radio"/>

Other (please specify)

3. Over the past 2 years, did you or your household receive health care services outside of your county?

Yes No

If yes, please specify the healthcare services you received

4. Are there healthcare services in your community / neighborhood that you feel need to be improved and / or changed? (Please be specific)

5. In your opinion, how much of a problem are the following causes of diseases or disability in your community? (Check one box per row)

	Not a Problem	Somewhat of a Problem	Major Problem	Don't Know
a) Cancer	<input type="radio"/>	<input type="radio"/>	<input type="radio"/>	<input type="radio"/>
b) Diabetes	<input type="radio"/>	<input type="radio"/>	<input type="radio"/>	<input type="radio"/>
c) Drugs / Alcohol	<input type="radio"/>	<input type="radio"/>	<input type="radio"/>	<input type="radio"/>
d) Heart Disease	<input type="radio"/>	<input type="radio"/>	<input type="radio"/>	<input type="radio"/>
e) HIV / AIDS	<input type="radio"/>	<input type="radio"/>	<input type="radio"/>	<input type="radio"/>
f) Mental Disorders	<input type="radio"/>	<input type="radio"/>	<input type="radio"/>	<input type="radio"/>
g) Obesity	<input type="radio"/>	<input type="radio"/>	<input type="radio"/>	<input type="radio"/>
h) Pneumonia / Flu	<input type="radio"/>	<input type="radio"/>	<input type="radio"/>	<input type="radio"/>
i) Respiratory Disease	<input type="radio"/>	<input type="radio"/>	<input type="radio"/>	<input type="radio"/>
j) Sexually Transmitted Diseases	<input type="radio"/>	<input type="radio"/>	<input type="radio"/>	<input type="radio"/>
k) Stroke	<input type="radio"/>	<input type="radio"/>	<input type="radio"/>	<input type="radio"/>
l) Suicide	<input type="radio"/>	<input type="radio"/>	<input type="radio"/>	<input type="radio"/>
m) Trauma	<input type="radio"/>	<input type="radio"/>	<input type="radio"/>	<input type="radio"/>
Other (please specify)				

6. How well do you feel our local health care providers are doing in addressing the health needs of the following age groups? (Check one box per row)

	Very Good	Good	Fair	Poor	Very Poor	N/A
Infants'	<input type="radio"/>	<input type="radio"/>	<input type="radio"/>	<input type="radio"/>	<input type="radio"/>	<input type="radio"/>
Age 1- 12	<input type="radio"/>	<input type="radio"/>	<input type="radio"/>	<input type="radio"/>	<input type="radio"/>	<input type="radio"/>
Age 13 - 17	<input type="radio"/>	<input type="radio"/>	<input type="radio"/>	<input type="radio"/>	<input type="radio"/>	<input type="radio"/>
Age 18 - 44	<input type="radio"/>	<input type="radio"/>	<input type="radio"/>	<input type="radio"/>	<input type="radio"/>	<input type="radio"/>
Age 45 - 64	<input type="radio"/>	<input type="radio"/>	<input type="radio"/>	<input type="radio"/>	<input type="radio"/>	<input type="radio"/>
Age 65 - 84	<input type="radio"/>	<input type="radio"/>	<input type="radio"/>	<input type="radio"/>	<input type="radio"/>	<input type="radio"/>
Over 85	<input type="radio"/>	<input type="radio"/>	<input type="radio"/>	<input type="radio"/>	<input type="radio"/>	<input type="radio"/>

7. Does our community need any additional healthcare providers?

- Yes No

If yes, please specify what is needed:

8. In your opinion, what areas need additional education or attention in our community? (Check all that apply)

- | | | |
|---|---|---|
| <input type="checkbox"/> a) Abuse / Violence | <input type="checkbox"/> i) Mental Illness | <input type="checkbox"/> q) Sexually Transmitted Diseases |
| <input type="checkbox"/> b) Aging (Dementia) | <input type="checkbox"/> j) Neglect | <input type="checkbox"/> r) Suicide |
| <input type="checkbox"/> c) Alcohol | <input type="checkbox"/> k) Nutrition | <input type="checkbox"/> s) Teen Pregnancy |
| <input type="checkbox"/> d) Alternative Medicine | <input type="checkbox"/> l) Obesity | <input type="checkbox"/> t) Tobacco Use |
| <input type="checkbox"/> e) Child Care | <input type="checkbox"/> m) Ozone | <input type="checkbox"/> u) Uninsured |
| <input type="checkbox"/> f) Chronic Diseases | <input type="checkbox"/> n) Pain Management | <input type="checkbox"/> v) Vaccinations |
| <input type="checkbox"/> g) Family Planning / Birth Control | <input type="checkbox"/> o) Poverty | <input type="checkbox"/> w) Water Quality |
| <input type="checkbox"/> h) Lead Exposure | <input type="checkbox"/> p) Preventative Healthcare | <input type="checkbox"/> x) Wellness Education |

Other (please specify)

PART II: YOUR HEALTH PRACTICES

9. In general, how would you best describe your health? (Choose one)

- Very Good
 Good
 Fair
 Poor
 Very Poor

10. Compared to a year ago, how would you rate your overall health in general now?

- Much better than a year ago
 About the same
 Much Worse than a year ago

11. Does your household have a provider you use for primary care?

- Yes
 No

If Yes, Please give Physician's name / Specialty / City

12. Have you had a physical in the past 12 months?

- Yes
 No

If no, why not? (Be specific)

13. Do you follow these health practices . . . ? (Check one box per row)

	Yes	No	N/A
If over 50, have you had a colonoscopy?	<input type="radio"/>	<input type="radio"/>	<input type="radio"/>
If male over 50, do you have annual prostate exams?	<input type="radio"/>	<input type="radio"/>	<input type="radio"/>
If female over 40, do you have annual mammograms?	<input type="radio"/>	<input type="radio"/>	<input type="radio"/>
If female, do you have a pap smear every other year?	<input type="radio"/>	<input type="radio"/>	<input type="radio"/>
Do you get 2.5 hours a week of Moderately intense physical activity?	<input type="radio"/>	<input type="radio"/>	<input type="radio"/>

14. Please complete sentence below. Are you ?

	Yes	No	N/A
a) Eating right (Daily5+servings-fruits/veg/wheat)	<input type="radio"/>	<input type="radio"/>	<input type="radio"/>
b) Using tobacco products weekly	<input type="radio"/>	<input type="radio"/>	<input type="radio"/>
c) Exercising 2-3 times weekly	<input type="radio"/>	<input type="radio"/>	<input type="radio"/>
d) Consuming alcohol (more than 1 drink daily)	<input type="radio"/>	<input type="radio"/>	<input type="radio"/>
e) Receiving an annual flu shot	<input type="radio"/>	<input type="radio"/>	<input type="radio"/>

Part III: A LITTLE MORE ABOUT YOU

15. What is your age?

- Under 18 18 - 44 45 - 64 65 - 74 Over 75

16. Your gender?

- Male Female

17. How would you identify yourself?

- a) Caucasian / White American d) American Indian / Native Alaskan
 b) African American / Black American e) Asian American / Pacific Islander
 c) Latino / Hispanic American f) Multicultural / Multiracial

Other (please specify)

18. How would you describe your household?

- Single Married with children no longer at home
 Married Divorced
 Married with children at home Other _____

19. Regarding your health insurance coverage... What type of health coverage is your primary plan? (Choose one)

- Private Insurance you purchased Covered by Employer (employer pays total cost)
 Medicare Covered by Employer (you & employer share cost)
 Medicaid No Coverage (Uninsured)

Other (please specify)

20. What is your home 5 digit zip code?

Thank you. Please return completed survey with enclosed business reply envelope.

Community Healthcare Needs Assessment 2012

What is your home zip code?	Pott CO Sample N=244	Pott CO Reply N=244	Pott Reply Rate		CHCS Dist N=52	CHCS Dist Reply Rate
Totals	906	3,098	26.9%		52	
66422 - Emmett	18	4	22.2%		4	22.2%
66432 - Havensville	20	9	45.0%		9	45.0%
66521 - Onaga	67	39	58.2%		39	58.2%
66540 - Soldier	7	0	0.0%		0	0.0%
66407 - Belvue	19	6	31.6%			
66415 - Centralia	11	5	45.5%			
66416 - Circleville	5	1	20.0%			
66417 - Coming	5	2	40.0%			
66427 - Frankford	17	2	11.8%			
66436 - Holton	73	3	4.1%			
66509 - Mayetta	30	3	10.0%			
66520 - Olsburg	25	3	12.0%			
66535 - St. George	104	13	12.5%			
66536 - St. Marys	119	34	28.6%			
66544 - Vermillion	5	2	40.0%			
66547 - Wamego	315	50	15.9%			
66549 - Westmoreland	66	24	36.4%			
Not given	0	44	NA			
Totals	906	244	26.9%			

What is your age?	KS CHNA NORM N=1984	%	Pott CO N=244	%	CHCS Dist N=52	%
Under 18 (omit)	1	0.1%	0	0.0%	0	0.0%
18 - 44	514	28.5%	59	27.6%	14	26.9%
45 - 64	808	44.8%	102	47.7%	28	53.8%
65 - 74	245	13.6%	33	15.4%	8	15.4%
Over 75	234	13.0%	20	9.3%	2	3.8%
Totals	1802	100.0%	214	100.0%	52	100.0%

Your gender?	KS CHNA NORM N=1984	%	Pott CO N=244	%	CHCS Dist N=52	%
Male	338	25.5%	55	26.3%	12	23.1%
Female	987	74.5%	154	73.7%	40	76.9%
Totals	1325	100.0%	209	100.0%	52	100.0%

How would you identify yourself?	KS CHNA NORM N=1984	%	Pott CO N=244	%	CHCS Dist N=52	%
a) Caucasian / White American	1308	96.9%	206	96.3%	51	98.1%
b) African American / Black American	6	0.4%	2	0.9%	1	1.9%
c) Latino / Hispanic American	13	1.0%	0	0.0%	0	0.0%
d) American Indian / Native Alaskan	3	0.2%	1	0.5%	0	0.0%
e) Asian American / Pacific Islander	3	0.2%	1	0.5%	0	0.0%
f) Multicultural / Multiracial	4	0.3%	3	1.4%	0	0.0%
Other (please specify)	13	1.0%	1	0.5%	0	0.0%
Totals	1350	100.0%	214	100%	52	100.0%

How would you describe your household?	KS CHNA NORM N=1984	%	Pott CO N=244	%	CHCS Dist N=52	%
Single	303	16.9%	38	17.8%	10	19.2%
Married	435	24.2%	42	19.6%	10	19.2%
Married with children at home	440	24.5%	70	32.7%	17	32.7%
Married with children no longer at home	382	21.3%	43	20.1%	14	26.9%
Divorced	112	6.2%	8	3.7%	0	0.0%
Other	124	6.9%	13	6.1%	1	1.9%
Totals	1796	100.0%	214	100.0%	52	100.0%

Community Healthcare Needs Assessment 2012

Regarding your health insurance coverage..	KS CHNA NORM N=1984	%	Pott CO N=244	%	CHCS Dist N=52	%
Private Insurance you purchased	266	14.1%	33	14.6%	5	9.6%
Medicare	386	20.5%	42	18.6%	9	17.3%
Medicaid	23	1.2%	2	0.9%	2	3.8%
Covered by Employer (employer pays total cost)	204	10.8%	23	10.2%	5	9.6%
Covered by Employer (you & employer share cost)	821	43.6%	102	45.1%	31	59.6%
No Coverage (Uninsured)	73	3.9%	8	3.5%	0	0.0%
Other (please specify)	111	5.9%	16	7.1%	0	0.0%
Totals	1884	100.0%	226	100.0%	52	100.0%

CHNA 2012 Primary Research - Pottawatomie County KS N=244						
ID	Area HC rating	Your HC status	c1	c2	c3	Over the past 2 years, did you or your household receive health care services outside of your county?
1068	Good	Good	ALL	OBG	SPEC	allergist gyn, GI
1210	Good	Fair	ALT			Natural Health Care
1122		Good	CANC			Cancer
1048	Good	Poor	CARD	SPEC		Cardiology & Lung Specialists Staff Infestion treatment
1162	Good	Good	CARD	MAMO	OBG	Heart doctor mammogram pap test
1199	Good	Fair	CARD	ENDO	DENT	heart, kidney, periodontal doctors
1186	Good	Fair	CARD	FOOT	DENT	Topeka, KS. Heartpacemaker, foot surgery, dental manhattan
1021	Very Good	Very Good	CHIR			Chiropractic
1107	Good	Good	CHIR	DENT	EYE	Chiropractor, dentist, optometrist
1106	Good	Good	DENT	PRIM	SPEC	(Three below) Periodontal care Primary physician care Specialty diagnostics
1112	Good	Good	DENT			Dental
1150	Good	Good	DENT			dental
1089	Very Good	Good	DENT	ORTH	CHIR/EYE	Dental , Orthopedic, Orthodontist, Chiropractic, Optometrist
1019	Good	Very Good	DENT			Dental care
1136	Very Good	Good	DENT			Dental care
1139	Very Good	Good	DENT			dental services
1142	Good	Good	DENT			Dental services.
1194	Fair	Fair	DENT	GEN		Dental, General Medical
1012	Very Good	Very Good	DENT	OBG	FP	Dental, Gynecological, Family Practice
1172	Good	Good	DENT	OP		Dental, OP services
1100	Good	Good	DENT	ORTH		Dental, Orthopedic
1170	Good	Good	DENT	PEDS	OBG/CHIR	dental, pediatric, obstetrics, chiropractic
1104	Good	Good	DENT	PEDS		Dental, pediatrics
1113	Good	Good	DENT			dentist
1175	Very Good	Good	DENT			Dentist
1004	Very Good	Very Good	DENT			dentist in Silver Lake, KS shawnee
1185	Poor	Fair	DENT			Dentist OBGYN
1131	Good	Good	DENT	EYE		Dentist, Eye Doctor
1129	Fair	Good	DENT	EYE	SPEC/OBG	Dentist, Optometrist, Specialist Physician Care, Functional/Integrative care Women's Health
1093	Fair	Good	DENT			Dentist, Primary Care
1176	Very Good	Good	DENT	SPEC		Dentist, specialist
1031	Very Good	Very Good	DENT	OBG	ORTH	Dentist, Well-woman care, ortho surgeon
1114	Good	Good	DENT	CHIR	FP	Many: Dental, Chiropractic, Family Physician.
1034	Good	Very Good	DERM	ENT		Dermatology, ENT
1182	Very Good	Fair	DIAB			Diabetic
1007	Very Good	Very Good	EMRM			ER
1078	Good	Good	EMRM			ER Care
1037	Fair	Very Good	EMRM			Er visits
1214	Good	Fair	EMRM			Mercy ER
1159	Good	Good	EMRM	GEN		Mercy Health Center Emergency Room, Doctors practice in Manhattan

CHNA 2012 Primary Research - Pottawatomie County KS N=244						
ID	Area HC rating	Your HC status	c1	c2	c3	Over the past 2 years, did you or your household receive health care services outside of your county?
1052	Good	Good	ENT			ENT
1084	Good	Good	ENT	ENDO	URL/OBG	ENT, Tokeka, Renal, Manhattan/ Urology, Manhattan/ OB Hiawatha by choice
1033	Very Good	Very Good	EYE			caterac surgery
1208	Poor	Fair	EYE			Eye Care
1188	Very Poor	Fair	EYE	SUR		Eye Care, Topeka. Surgery, Topeka
1067	Very Good	Good	EYE	DERM	PAIN	eye,dermatology,pain management
1163	Good	Good	EYE			Lasik surgery
1026	Very Good	Very Good	EYE			ongoing care for retinal occlusion.
1005	Very Good	Very Good	EYE			Optometrist
1023	Very Good	Very Good	EYE			Optometry - Dr. Carlye Williams - he has offices in Topeka, in between Stormont Vail and St. Francis, and in Junction City at the WalMart. We see him in Topeka.
1148	Very Good	Good	EYE			Retina associates in Topeka, St. Francis Hospital
1090	Fair	Good	FP			Family doctor in Topeka and Dentist in Wasego
1074	Very Good	Good	GAS			Endoscopy
1206	Good	Fair	GAS			gastrologist
1006	Very Good	Very Good	GAS			screening colonoscopy
1109	Poor	Good	GEN	OTHR	DENT/PEDS	Annual physical & exam, blood work, laboratory services, dental, pediatrician
1184	Fair	Fair	GEN			Doctors in KU Med KC
1040	Very Good	Very Good	GEN	NEU		Office visit, Dr. Raddi (neurologist) Tests at Mercy Hospitals
1039	Good	Very Good	GEN	DENT		Regular check-ups dental and medical
1011	Good	Very Good	IM	SUR	OBG	Internal medicine, outpatient surgery, OB/Gyn
1190	Good	Fair	IP			Hospital
1119		Good	IP			Hospital Care in Shawnee, Co.
1013	Very Good	Very Good	MAMO	OTHR		Mammogram and bone density testing.
1181	Good	Fair	MAMO			Mammogram, Riley Co.
1180	Fair	Fair	MAMO	DENT		mammography, orthodontist
1168	Very Good	Good	NEP			Nephrology
1029		Very Good	NEU			Dr. Divine Neurologist
1049	Fair	Poor	NEU			Neuro - KUMED
1147	Very Good	Good	OBG			A womans specialist
1155	Good	Good	OBG	EYE		Cervical bx. / check for possible detached retina.
1069	Good	Good	OBG	PEDS	ALL	GYN services, Pediatric Services, Immunizations
1003	Very Good	Very Good	OBG	PAIN		gyn, pain care/ESI
1053	Good	Good	OBG			OB
1061	Good	Good	OBG			OB- GYN
1046	Very Good	Poor	OBG	CARD	MAM/SPEC/G	OBGYN, Heart, Stroke, Mamogram, General Services
1161	Good	Good	OBG			Well Woman appt.
1054	Good	Good	ONC			oncology
1196	Fair	Fair	OP			Doctor in Manhattan
1110	Good	Good	OP			referred to doctor in Manhattan

CHNA 2012 Primary Research - Pottawatomie County KS N=244						
ID	Area HC rating	Your HC status	c1	c2	c3	Over the past 2 years, did you or your household receive health care services outside of your county?
1071	Very Good	Good	OPT			Optometrist
1137	Good	Good	ORTH			Hip replacement
1111	Very Good	Good	ORTH	OPHTH		Knee Surgery at Manhattan Surgical Clinic and cataract surgery in Topeka
1101	Good	Good	ORTH			ORTHOPEDIC
1070	Good	Good	ORTH			Orthopedic in Manhattan, KS
1144	Good	Good	ORTH			orthopedic surgery
1002	Good	Very Good	ORTH	GEN	CHIR	Orthopedic Surgery and Seeing Physician Chiropractor Care
1166	Good	Good	ORTH	IFD		Orthopedics/Infecious Disease
1085	Good	Good	ORTH	DENT	CHIR/EYE	Surgery on hip in Topeka, we see dentist chiropractor and eye care in Holton, Jackson Co.
1123	Good	Good	ORTH	RAD		total hip replacement, MRI-CAT scan, tests.
1140	Very Good	Good	OTHR			ESI TOPEKA
1216	Fair		OTHR			I go to Cotton O'Neal all my Drs are there.
1143	Very Good	Good	OTHR			I JUST MOVED HERE A FEW MONTHS AGO
1014	Very Good	Very Good	OTHR			Inek Army Hospital, Ft Riley, KS
1083	Fair	Good	OTHR			Irwin Army Hospital, Ft. Riley, KS
1160	Very Good	Good	OTHR			Manhattan
1095	Good	Good	OTHR	OPHTH		Radical Protatectomy, Ophtamologist care
1127	Very Good	Good	OTHR			Referred to Doctors in Topeka
1027	Very Good	Very Good	OTHR			Riley
1073	Fair	Good	OTHR			Riley
1092	Good	Good	OTHR			Riley, Shawnee
1115	Good	Good	OTHR			Staff Infection caare
1099	Good	Good	OTHR			We doctor in Topeka
1120	Fair	Good	OTHR			We go to Manhattan Su Health Care
1016		Very Good	OTHR			We have to go to Manhattan (Riley Co) for all our health care, everything marked very poor in #2 above
1205	Fair	Fair	PAIN	ORTH	DENT	pain management, orthopedic specialist, dentist
1203	Good	Fair	PEDS			Childrens Murcy KC
1018	Poor	Very Good	PEDS	CHIR		College Student out of area hurt football. Pedis and Chiro.
1126	Good	Good	PEDS			Pediatric care in Riley Co.
1178	Fair	Good	PEDS	BH	DENT/EYE/OE	Pediatric services, behavioral counseling, dental, eye care, OB/GYN
1132	Good	Good	PEDS	SPEC		Pediatrician, Specialty Drs (childrens mercy)
1183	Good	Fair	PHAR			Wal Mart Pharmacy , Holten, KS
1024	Very Good	Very Good	PHY	NUTR		Physical Therapy- Riley Co.; Mercy Light weight loss program- Riley Co.
1032	Very Good	Very Good	PNEO			Newborn had to go to Topeka for jaundice. Just some lights did the trick and a big hospital bill.

CHNA 2012 Primary Research - Pottawatomie County KS N=244						
ID	Area HC rating	Your HC status	c1	c2	c3	Over the past 2 years, did you or your household receive health care services outside of your county?
1193	Fair	Fair	PRIM	SPEC	RAD	Primary & specialist care as well as hospitalization, tests, and x-rays and scans.
1082	Good	Good	PRIM	DENT	EYE	Primary Care, Dental, Vision (Riley Co.)
1215	Fair	\	PRIM	DENT		Primary care, dentist
1077	Good	Good	PRIM	DENT	SPEC	Primary Care, Dentist, Specialist
1081		Good	PRIM			Primary care, Manhattan, Westmoreland, Clinic closed
1164	Good	Good	PRIM	OBG		Primary doctor, and Women's Health Group
1079	Good	Good	PRIM	DENT	EYE/CHIR	Primary, Dentist, Optometrist, Chiropractic
1165	Very Good	Good	RAD			Radiation treatment in Topeka, Ks
1025	Very Good	Very Good	RHE			Rheumatologist from Topeka
1145	Very Good	Good	RHE			Rheumatologist in Topeka
1201	Fair	Fair	SPEC	CHIR		lab work in topeka, cost in 66536 is too high chiropractor in manhattan - don't like the ones in 66536
1056	Very Good	Good	SPEC	ORTH		specialist-orthopedic
1047	Good	Poor	SPEC	CARD		Specialized health care as recommended by local care: cardiologist. Care for staff infection
1105	Very Good	Good	SPEC	NEU	RHE/FOOT/SF	Specialty providers- Neurologists, Rheumatologist, Podiatrist, Nuclear stress test, MRI. MRI truck comes to town but specialist have said not good quality.
1167	Very Good	Good	SPEC			Specialty visit
1149	Very Good	Good	SUR			Major Surgery
1154	Good	Good	SUR			Surgery
1173	Good	Good	SUR			surgery
1212	Good	Fair	SUR			surgery
1087	Good	Good	SUR	OTHR		Surgery and Acute care stay in hospital
1151	Fair	Good	SUR			Surgery.
1042	Very Good	Very Good	URL			Urologic care Manhattan
1058	Very Good	Good	URL			Urology consult to Mercy
1088	Good	Good	URL			Urology Services
1038	Good	Very Good	URL			vasectomy

CHNA Primary Research - Pottawatomie County KS N=244					
ID	Area HC rating	c1	c2	c3	Are there healthcare services in your community / neighborhood that you feel need to be improved and / or changed? (Please be specific)
1006	Very Good	ACC			Availability of physicians
1081		ACC			Be nice to have Westy Center reopen.
1048	Good	ACC	FAC		Emergency treatment area - size and newest equipment available Computer Health records
1012	Very Good	ACC	DOCS		It would be nice to have doctors in one place instead of only in onaga one or 2 days of the week (our doctor) we don't want to see others if possible.
1162	Good	ACC	DOCS	SPEC	Its hard to get into see the doctor. We must need more doctors in the area Maybe more specialists.
1109	Poor	ACC			Services are neither advertised or promoted in the community. I have no idea what services are available, if any.
1126	Good	ACC			Urgent Care. In todays world, it's difficult to schedule an appointment with a doctor, 2-3 weeks out. If I have an issue to address, I don't have the time to wait.
1161	Good	ACC	DOCS	DENT/INS	Would like to see more access to physicians and dentist for the uninsured
1069	Good	ALL	DOH		Public Immunizations at the Public Health Department- Bill private insurance
1023	Very Good	ALT	PEDS		I hear a lot of people consult Dr. Rhoades in Topeka for alternative medicine. There are also those who see pediatric care in Topeka/Manhattan, though we love Dr. Carroll.
1150	Good	BH			mental health
1174	Good	BH			mental health
1121	Good	BH			Mental Health.
1025	Very Good	DEN	INSU		More dentists that take medicaid and uninsured.
1049	Fair	DENT	FINA		Dental care on a sliding scale
1158	Good	DENT	ACC	EMRM	dentist options people should know which doctor is available after hours at the hospital if it is an emergency situation and local hospital is unable to handle entire care, person should start at hospital that can handle all
1111	Very Good	DENT			I believe there could be dental care in Westmoreland
1106	Good	DENT	FIT		Wamego could use another dentist Pott Co could use a periodontist We could all use new trails; opportunities for hiking, biking, running, etc Wamego desperately needs a large, indoor, heated year-round pool with a major exercise facility included
1210	Good	DENT	CHIR	ALT/BH	We need a local dentist, chiropractor and a natural healthcare provider and mental health care provider.
1167	Very Good	DERM	OBG		No dermatology, No gynecology
1002	Good	DERM	BH		Not access to all specialities such as Dermatology Mental Health Services need to be available locally
1149	Very Good	DIAB	CARD	SPEC/NUT	Physicians Specializing in Diabetes for both old and children so don't have to travel to Topeka for a Specialist Need Cardiac Rehab availability Need Bariatric Physicians specializing in weight loss programs Need Dermatogist availability Need Chiropracter similar to Alternative Medicine in Wamego and Manhattan to be in Onaga
1102	Good	DOCS			Need more expertised providers
1151	Fair	DOCS	IM	DENT	Need more female internists. Need better dentists since mine is the best & he is getting ready to retire.
1208	Poor	DOCS			Yes all, physicians need to be more attentive and act like they actually care about the people they are caring for.

CHNA Primary Research - Pottawatomie County KS N=244					
ID	Area HC rating	c1	c2	c3	Are there healthcare services in your community / neighborhood that you feel need to be improved and / or changed? (Please be specific)
1018	Poor	DOCS			Yes to listen to the patient and confidentiality
1037	Fair	EMRM			The ER 'S in this county are horrible. We go to manhattan for our healthcare needs.
1005	Very Good	EYE			Optometry
1047	Good	FAC	DOCS		ER update; In-patient rooms amd computerized records. I would like to see a way to be able to see the same Doctor or Doctor Technician, not a different one each time I have to have an appointment.
1083	Fair	FAC	DOCS	DENT	Need more Physician Clinics, Dentists
1188	Very Poor	FAC	DOCS		Onaga and Holton Hospital are a joke. Might as well go to graveyard.
1115	Good	FAC			Update hospital
1101	Good	FAM	ORTH		FAMILY PLANNING SERVICES, ORTHOPEDIC CARE
1193	Fair	FAM	WELL	OBG/HH/H	Family planning. Access for high school students to comprehensive sex education including contraception. Women's health and wellness services. Home health care & in home help for aged to avoid rest homes. Increased access to hospice. In every case care that is affordable. And help to reduce the amount of money that goes to health insurance and the drug companies instead of care.
1063	Fair	FAM			We need to have someone in St. Marys who will address Family Planning issues on a daily basis instead of once a month!!!
1059	Good	FINA			cost needs lowered
1068	Good	FIT	NH	OBG/ORT	fitness center, assisted living ,gyn and obstetrics, orthopedics,improved and updated out patient clinics esp. physical therapy occupational therapy and speech therapy
1166	Good	FIT			Need a fitness center/pool
1041	Good	FIT			We need a community fitness center, badly!!
1180	Fair	FP	NH		More family practice physicians. No assisted living facility very close. Residents have to move away from family, friends.
1170	Good	KID			If childcare is considered healthcare, it definitely needs to be improved and there are no preschool services in Westmoreland at all.
1077	Good	KID	BH		More Daycare, Mental Health Services
1085	Good	KID			We need day care centers in Onaga for our Children
1144	Good	MAMO			digital manography
1116	Good	NH			Assisted living facility!
1060	Good	NH			I feel that the nursing home in Onaga needs to be improved. I do not feel comfortable putting any of my family members there. We have used the nursing home in another county.
1127	Very Good	NH			Nursing Home
1201	Fair	NH			nursing home is not worth the cost - patients don't get bathes more than once maybe twice a week - and that's just one example of poor service
1165	Very Good	NH			Onaga needs a better nursing home.
1199	Good	NH			We desperately need assisted living.
1070	Good	ORTH	DERM		Would like to see different orthpedic providers and dermatology
1207	Very Poor	OTHR			All
1095	Good	OTHR			Demathology
1178	Fair	PEDS			Pediatric care - more thorough, learning disabilities

CHNA Primary Research - Pottawatomie County KS N=244					
ID	Area HC rating	c1	c2	c3	Are there healthcare services in your community / neighborhood that you feel need to be improved and / or changed? (Please be specific)
1108	Good	PHAR			We need a better pharmacy
1073	Fair	PRIM			more primary care doctors
1129	Fair	PRIM			Shortage of Primary care physicians and no available functional medicine/integrative care, available here (only in KC)
1181	Good	RAD	ACC		Yes, I wish there could be more leniency on X-rays, etc
1113	Good	REC	OTHR		athletic training service to area school athletes needs to be expanded
1084	Good	SNUR			school nurse for alma schools
1067	Very Good	SPEC			more specialists on regular basis
1043	Good	SPEC			Specialist are not available very often or are out of town.
1122		SPEC	GEN		Specialist, Medical
1033	Very Good	SPEC	ORTH		We're a small community so I know it's hard to get specialist here. Having orthodontic care closer to home would be nice - or at least the 6 mo check up visits that only take 10 min but we have to drive 60 min one way to get to the appt.
1141	Very Good	SUR			Like to see more surgery services.
1194	Fair	WAIT	ACC	EMRM	Better Emergency Service, Faster
1019	Good	WELL	STRK	DIAB/OBE	Education for the community on Stroke, diabetes, obesity, heart disease, smoking

CHNA Primary Research - Pottawatomie County KS N=244					
ID	Area HC rating	c1	c2	c3	Does our community need any additional healthcare providers? If Yes
1081		ACC	DOCS	AMB	A doctor near area. Was 20 miles from any westy 22 miles - Wamego 20+, Manhattan 20. Ambulance service quick to reach us in need. let have 1st alert near by walk daily away from our aerea.
1136	Very Good	ACC			Takes a long time to get an appointment even when sick.
1012	Very Good	ACC	FAC	DOCS	They are spread out over different clinics, would be nice to stay in one area so can see your own doc when needed.
1194	Fair	ALT			Alternative Medicine
1210	Good	ALT	INSU		Natural Health Care - in all areas, from education of this kinder & more self managed alternative, to Drs specializing in the different areas, available in other places. For people without insurance, this is a far less expensive alternative & it is very empowering to people like me who choose other avenues of healing.
1037	Fair	AMB			It needs four fully staffed ambulances instead of 3
1178	Fair	BH			Assistance with behavioral health issues and learning disabilities for children.
1127	Very Good	CHIR	DENT	EYE	Chiro, Dentist, Eye Doctor
1089	Very Good	DENT			Dental
1170	Good	DENT	PEDS		dental, pediatric
1020	Very Good	DENT			dentists
1205	Fair	DENT	SPEC		dentists, more options for speciality "out reach"
1111	Very Good	DENT			More local dentists
1106	Good	DENT	SPEC	FIT/NUTR	periodontist dentist specialists personal trainers dietitians smoking cessation (inpatient)
1042	Very Good	DERM			Dermatology
1002	Good	DERM	MENT		Dermatology Mental Health
1167	Very Good	DERM	OBG		Dermatology, Gynecology
1139	Very Good	DERM	OPHTH	ORTH	dermatology, ophthamology, orthopedics
1149	Very Good	DIAB	NEU	DERM	Availability in Specialists in Diabetes, Weight Loss, Dermatology
1027	Very Good	DOCS			If there were more, few people would go to Riley Co.
1115	Good	DOCS			More Doctors in Onaga Clinic/Hospital. Never know what provider you are going to have to see -not continuity with same healthcare provider.
1172	Good	DOCS			More doctors.
1105	Very Good	DOCS	ACC		Most of the providers are full, there are a couple of providers that are but they are accepting only by application.
1018	Poor	DOCS			New faces with the love for medicine. Still are fresh to the system and have not gotten under the polictical control of state issues.
1016		DOCS			Oroburg has no healthcare practice of any kind.
1162	Good	DOCS			The doctors in the area have a full case load and don't take new patients.
1026	Very Good	DOCS			The share our local providers with 2 others area clinics
1165	Very Good	DOCS			We can always use more doctors in these small communities

CHNA Primary Research - Pottawatomie County KS N=244					
ID	Area HC rating	c1	c2	c3	Does our community need any additional healthcare providers? If Yes
1192	Very Good	DOCS			we can always use more.
1063	Fair	FAM			Full time Family Planning
1113	Good	FIT	REC		expand athletic training service
1049	Fair	FP			family health providers
1072	Good	GEN			gen practioner
1010	Good	GEN			general practioner
1008	Good	GEN			general practioners
1100	Good	HH			Better care home in the Onaga community for the elderly
1028		HH			More home health care providers
1121	Good	HOSP			Hospice
1163	Good	NEU			Nuerologist
1116	Good	NH			Assisted living facility.
1043	Good	NH			More nursing home space.
1092	Good	ONC			Oncologist
1054	Good	ONC	DERM		oncology, dermatology
1070	Good	ORTH	DERM		orthopedic and dermatology
1180	Fair	OTHR	SPEC		Since we live in a very rural area and the baby boomers are aging, the need for specialty in geriatrics is, in my opinion, greatly needed.
1158	Good	PEDS	CARD		pediatrician cardiologist
1071	Very Good	PEDS	ALT		Pediatrician, Alternative Medicine - Dr. Rhodes
1083	Fair	PEDS	OTHR		Pediatrician, Geratrician
1090	Fair	PEDS	OTHR	SPEC	Pediatricians and Geriatric providers
1212	Good	PEDS			pediatrics
1023	Very Good	PEDS	ALT		Perhaps a pediatrician. Access to alternative medicine.
1173	Good	PEDS	SPEC	OTHR	Specialists-geriatric, pediatric
1031	Very Good	PNEO	OBG		I would love to see a CNM who does prenatal appointments and well-woman care.
1126	Good	PRIM			If I have to wait 2-3 weeks to see my primary care physician, than we are short on healthcare providers.
1067	Very Good	PRIM			more choice in primary care
1073	Fair	PRIM	SPEC		More primary care physicians, access to specialists
1019	Good	PRIM	ENDO	GAS	More primary care. Could use endocrinology and GI specialties
1193	Fair	PRIM	DOCS	STFF	Primary care doctors or Physician Assistants or Nurse Practioners
1109	Poor	PRIM	PEDS	DENT	primary care, pediatrician, dentist,
1129	Fair	PRIM	SPEC		Shortage of primary care physicians and specialists, could not find any functional medicine/integrative care physicians providers anywhere in surround area (had to go to KC)
1047	Good	PRIM	ACC	DOCS	So a person doesn't have to see a different provider when need health care needs arise,. Very glad someone is always able to see me, but would have a better flow, if had one main provider that knows your past history.
1048	Good	PRIM			Would be so nice to have a primary doctor you could see when needed, not have providers traveling around so much, you never know who you may have help you.

CHNA Primary Research - Pottawatomie County KS N=244					
ID	Area HC rating	c1	c2	c3	Does our community need any additional healthcare providers? If Yes
1056	Very Good	SPEC	OTHR		geriatrician
1200	Good	SPEC			I AM SURE THERE ARE MORE SPECIALIZED SERVICES THAT COULD BE PROVIDED IF POSSIBLE, BUT I CAN'T THINK OF THEM AT THE MOMENT
1151	Fair	SPEC	IM	DENT	Need specialized care for geriatrics. Need more female internists. Need better dentists.
1188	Very Poor	SPEC	OTHR		Someone that cares and knows need of elderly. I heard a local doctor say "They are old and going to die anyway" Most people I know goes to Topeka for health care because that's where they end up after local care bleeds them dry of there money and problem still not solved. So they send you to Topeka or KC. Might as well go here first.
1144	Good	SPEC			specialist
1122		SPEC	DOCS		Specialist, Medical.
1103	Good	SPEC			Specialists to see patints at local clinic
1208	Poor	SPEC	OTHR	BH	We need a geriatric specialist, physicians who care about their patients, and better mental health providers.

KEY - CHNA Open End Comments

Code	HC Themes	CODE	Physician Specialty
ACC	Access to Care		Primary Care:
AGE	Aging (Senior Care / Assistance)	FP	Family Practice
AIR	Air Quality	IM	Internal Medicine
ALC	Alcohol	OBG	Obstetrics/Gynecology
ALCU	Underage Drinking	PEDS	Pediatrics
ALT	Alternative Medicine		
ALZ	Alzheimers		Medicine Specialists:
AMB	Ambulance Service	ALL	Allergy/Immunology
AUD	Auditory	CARD	Cardiology
BACK	Back / Spine	DERM	Dermatology
BD	Blood Drive	ENDO	Endocrinology **
BH	Mental Health Services	GAS	Gastroenterology
BIRT	Low Birth Weight	ONC	Oncology/RADO
BRST	Breastfeeding	IFD	Infectious Diseases
CANC	Cancer	NEP	Nephrology **
CHEM	Chemotherapy	NEU	Neurology
CHIR	Chiropractor	PSY	Psychiatry
CHRON	Chronic Diseases	PUL	Pulmonary
COMM	Communication	RHE	Rheumatology
DENT	Dentists		
DIAB	Diabetes		Surgery Specialists:
DIAL	Dialysis	SUR	General Surgery
DOCS	Physicians	NEUS	Neurosurgery
DOH	Public Health Department	OPHT	Ophthalmology
DRUG	Substance Abuse (Drugs / Rx)	ORTH	Orthopedics
ECON	Economic Development	ENT	Otolaryngology (ENT)
EMRM	Emergency Room	PLAS	Plastic/Reconstructive
EMS	EMS	VAST	Thoracic/Cardiovascular/Vascular
EYE	Eye Doctor / Optometrist	URL	Urology
FAC	Facility		
FAM	Family Planning Services		Hospital Based:
FINA	Financial Aid	AES	Anesthesia/Pain
FIT	Fitness / Exercise	EMER	Emergency
FLU	Pneumonia / Flu	RAD	Radiology
FOOT	Podiatrist	PATA	Pathology
GEN	General Practitioner	NEO	Neonatal/Perinatal * ABP 06
GOV	Government	PHY	Physical Medicine/Rehab
H2O	Water Quality		
HEM	Hematologist		Ad'l Codes:
HH	Home Health	PRIM	Primary Care
HIV	HIV / AIDS	PROS	Prostate
HOSP	Hospice	REC	Recreation
HRT	Heart Care	RESP	Respiratory Disease
INSU	Uninsured/Underinsured	SMOK	Smoking
IP	Inpatient Services	SNUR	School Nurse
KID	Child Care	SPEC	Specialist Physician care
LEAD	Lead Exposure	SS	Social Services
MAMO	Mammogram	STD	Sexually Transmitted Diseases
NEG	Neglect	STFF	Medical Staff
NH	Nursing Home	STRK	Stroke
NUTR	Nutrition	SUIC	Suicide
OBES	Obesity	THY	Thyroid
OP	Outpatient Services	TOB	Tobacco Use
ORAL	Oral Surgery	TPRG	Teen Pregnancy
OTHR	Other	TRAN	Transportation
OZON	Ozone	TRAU	Trauma
PAIN	Pain Management	VACC	Vaccinations
PHAR	Pharmacy	VIO	Abuse / Violence
PNEO	Prenatal	WAIT	Wait Times
POV	Poverty	WELL	Wellness Education
PREV	Preventative Healthcare	WIC	WIC Program

CHNA report
questions contact :



Vince Vandelaar, MBA
VVV Marketing & Development INC.
***Adjunct Professor / Professional Consulting
Services***

601 N Mahaffie, Olathe, KS 66061
(913) 302-7264 (C)
vmlvandelaar@aol.com
LinkedIn: vandelaar
***[http://sites.google.com/site/vvvresearchdevelo
pment/](http://sites.google.com/site/vvvresearchdevelopment/)***